

IBM

Exam A2180-607

IBM WebSphere Process Server V7.0, Integration Development

Version: 6.0

[Total Questions: 104]

Topic 1, Volume A
Question No : 1 - (Topic 1)

Which of the following are TRUE regarding Service Component Architecture (SCA)?

- A. Standard Java classes are used to store data.
- B. Integration developers can concentrate more time on the details of the service implementation.
- C. Without SCA, you must change application code to respond to service implementation changes.
- D. SCA provides a single service component abstraction for services that may already be implemented as business processes.
- E. The service component definition is included in a file called <SERVICE_NAME>.SCDL that can have zero or more interfaces associated with it.

Answer: C,D

Question No : 2 - (Topic 1)

Refer to the exhibits. Exhibit 1 shows the definition of Customer business object.

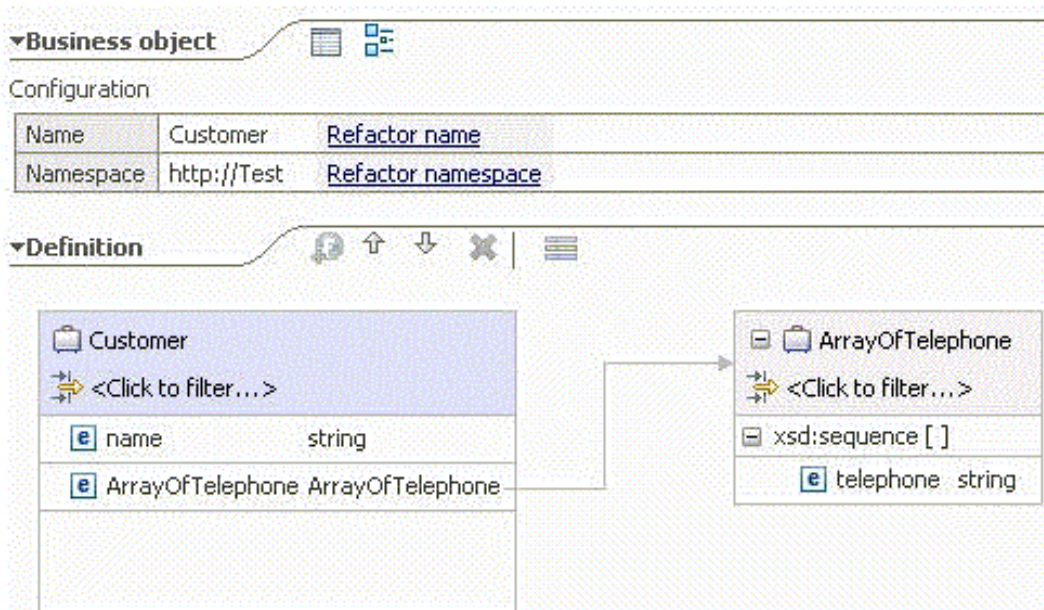


Exhibit 2 contains fragments of Java code that creates an instance of Customer business object.

```
...
ServiceManager serviceManager = ServiceManager.INSTANCE;
BOFactory bof = (BOFactory) serviceManager.locateService("com/ibm/websphere/bo/BOFactory");

DataObject customer = bof.create("http://Test", "Customer");
customer.setString("name", "John Doe");
```

Which of the following lines of code places a value in the telephone field in the ArrayOfTelephone child business object?

- A.** DataObject tele_array = customer.createDataObject("ArrayOfTelephone");A.DataObject tele_array = customer.createDataObject("ArrayOfTelephone");
tele_array.setString("telephone", "111-1111");
- B.** DataObject tele_array = bof.create("http://Test", "ArrayOfTelephone");B.DataObject tele_array = bof.create("http://Test", "ArrayOfTelephone"); tele_array.setString("telephone", "111-1111");
- C.** DataObject tele_array = customer.createDataObject("ArrayOfTelephone");C.DataObject tele_array = customer.createDataObject("ArrayOfTelephone"); Sequence seq = tele_array.getSequence(); seq.add("telephone", "111-1111");
- D.** DataObject tele_array = customer.createDataObject("ArrayOfTelephone");D.DataObject tele_array = customer.createDataObject("ArrayOfTelephone"); Sequence seq = tele_array.getString("telephone");? seq.add("telephone", "111-1111");

Answer: C

Question No : 3 - (Topic 1)

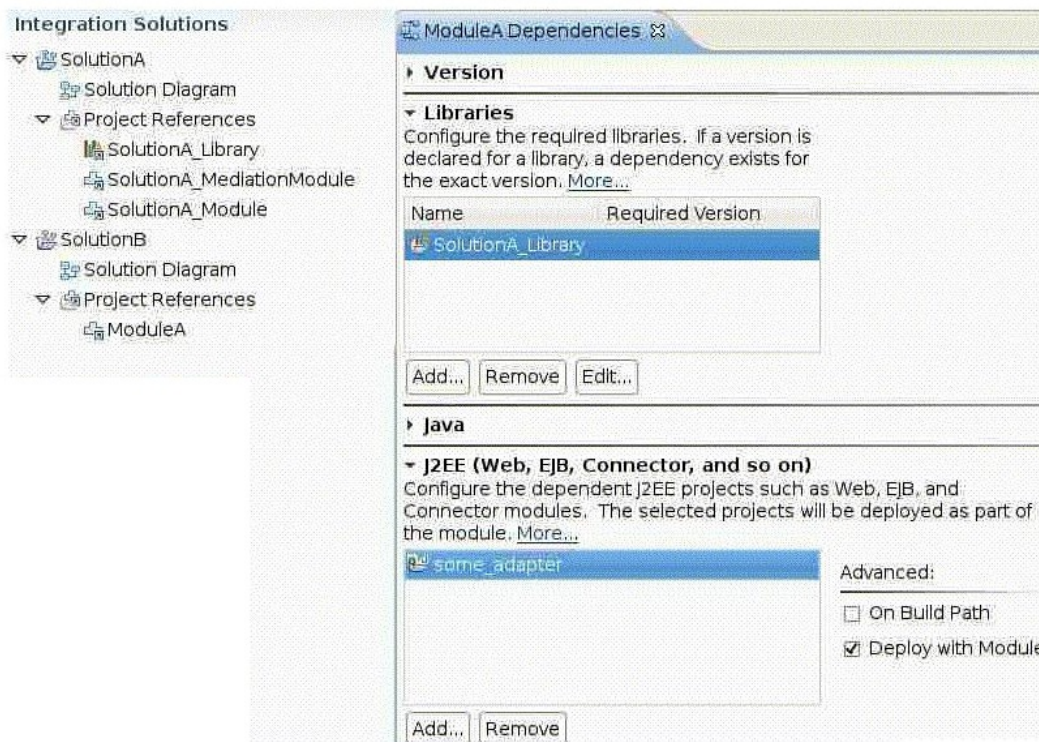
A company is redesigning an existing business process. During implementation, the integration developer realizes that the interface of an imported service is now different from the reference of the business process. Which of the following is the BEST solution for supporting future releases?

- A.** Implement a bridge using a java component.
- B.** Implement an EJB that connects to both interfaces.
- C.** Use a data map to connect both interfaces.
- D.** Use a mediation flow to connect both interfaces.

Answer: D

Question No : 4 - (Topic 1)

Refer to the Exhibit.



Integration Solutions

- SolutionA
 - Solution Diagram
 - Project References
 - SolutionA_Library
 - SolutionA_MediationModule
 - SolutionA_Module
- SolutionB
 - Solution Diagram
 - Project References
 - ModuleA

ModuleA Dependencies

Version

Libraries
 Configure the required libraries. If a version is declared for a library, a dependency exists for the exact version. [More...](#)

Name	Required Version
SolutionA_Library	

Add... Remove Edit...

Java

J2EE (Web, EJB, Connector, and so on)
 Configure the dependent J2EE projects such as Web, EJB, and Connector modules. The selected projects will be deployed as part of the module. [More...](#)

some_adapter	Advanced: <input type="checkbox"/> On Build Path <input checked="" type="checkbox"/> Deploy with Module
--------------	---

Add... Remove

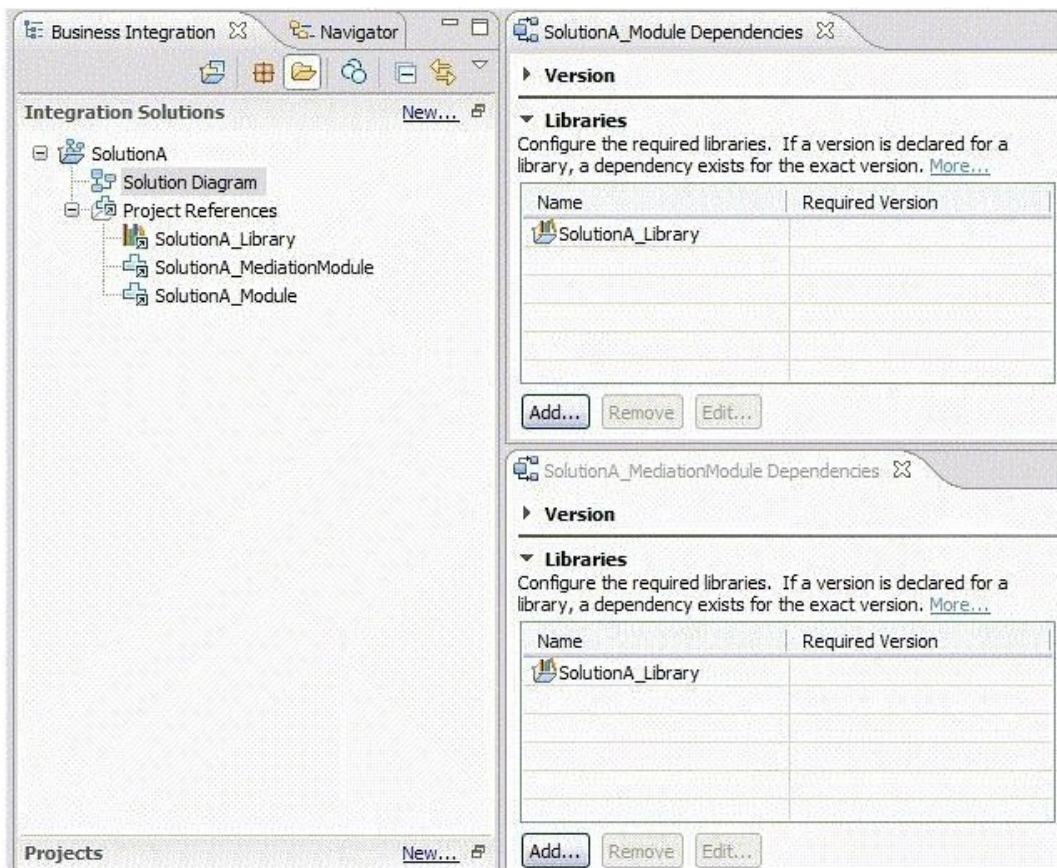
Assuming some_adapter is a valid JCA adapter, which of the following is TRUE about this configuration?

- A. Since SolutionA_Library is referenced by the two solutions, it has to be configured as a shared library.
- B. The configuration is incorrect because SolutionA_Library isn't included in the project references of SolutionB.
- C. When exporting SolutionB for server deployment, an EAR file containing 2 JARs, 1 WAR and 1 RAR is created.
- D. When exporting SolutionB for command-lineservice deployment, a ZIP file containing 2 JARs, 1 WAR and 1 RAR is created

Answer: C

Question No : 5 - (Topic 1)

Refer to the Exhibit.



As shown in the Exhibit, both modules of SolutionA reference the library, which is configured to be deployed with the module.

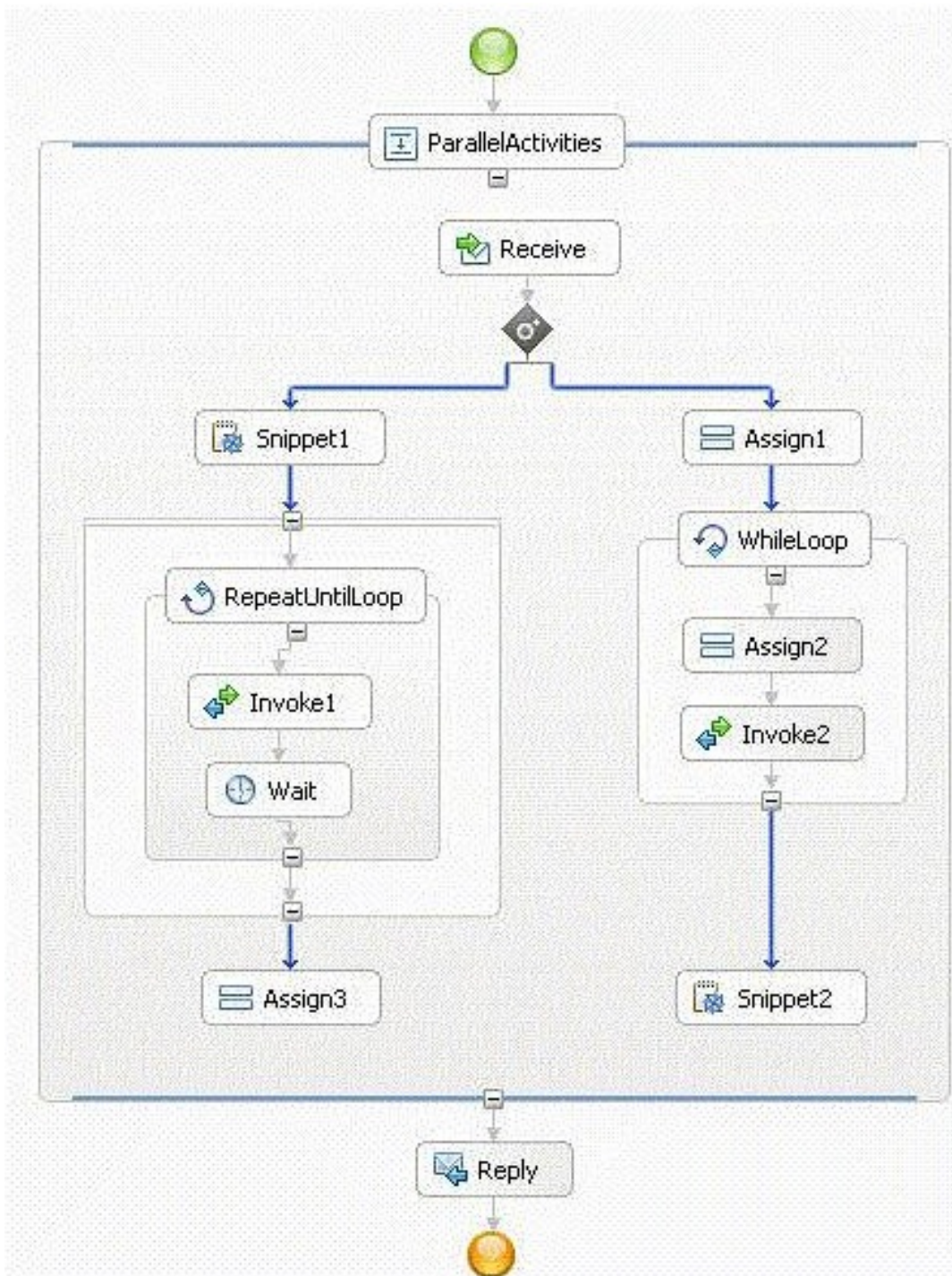
If an integration developer exports SolutionA for command-line service deployment, the result is:

- A. one zip file containing the folders for the library and both modules.
- B. two zip files, one for each module, containing the folders for the library and the module.
- C. one enterprise archive containing the archives for the library, both modules, and a web application.
- D. two enterprise archives, one for each module, containing the archives for the library, the module and a web application.

Answer: B

Question No : 6 - (Topic 1)

Refer to the Exhibit.



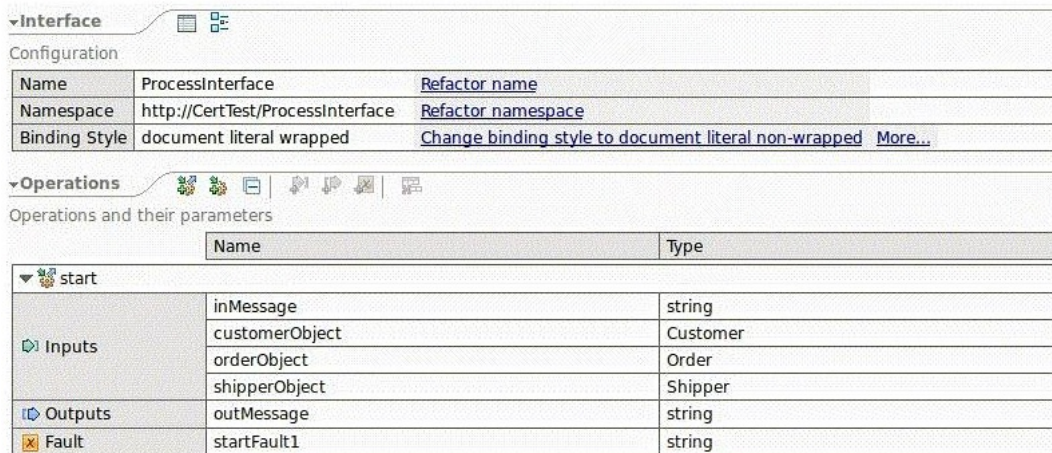
This process should be defined as a long-running process, because the implementation contains:

- A. a Snippet.
- B. a Parallel flow.
- C. a Wait activity.
- D. a Repeat Until Loop activity.

Answer: C

Question No : 7 - (Topic 1)

Refer to the exhibit.



The screenshot shows the configuration of an interface named 'ProcessInterface'. The configuration is divided into two sections: 'Configuration' and 'Operations and their parameters'.

Configuration:

Name	ProcessInterface	Refactor name
Namespace	http://CertTest/ProcessInterface	Refactor namespace
Binding Style	document literal wrapped	Change binding style to document literal non-wrapped More...

Operations and their parameters:

	Name	Type
▼ start		
	inMessage	string
↳ Inputs	customerObject	Customer
	orderObject	Order
	shipperObject	Shipper
↳ Outputs	outMessage	string
⊗ Fault	startFault1	string

A developer using the interface in the exhibit is facing a requirements change - the start operation needs to be a one-way operation that uses the existing inputs. Which of the following is the BEST way to make the change?

- A. Add a new one-way operation to the interface and ignore the existing operation.
- B. Click on the operation name and choose "Alt+Shift+R" to refactor the operation.
- C. Right-click on the operation and choose "Change to One Way Operation" from the context menu.
- D. Delete the interface and create a new interface with the same name, namespace, and operation name with a one-way operation.

Answer: C

Question No : 8 - (Topic 1)

Refer to the exhibit.

```

<xsd:schema xmlns:xsd="http://www.w3.org/2001/XMLSchema"
  targetNamespace="http://Test" xmlns:tns="http://Test">

  <xsd:complexType name="Parent">
    <xsd:sequence>
      <xsd:element name="name" type="xsd:string"/>
      <xsd:element name="child" type="Child"/>
    </xsd:sequence>
  </xsd:complexType>

  <xsd:complexType name="Child">
    <xsd:sequence>
      <xsd:element name="name" type="xsd:string"/>
      <xsd:element name="grandChild" type="GrandChild"/>
    </xsd:sequence>
  </xsd:complexType>

  <xsd:complexType name="GrandChild">
    <xsd:sequence>
      <xsd:element name="name" type="xsd:string"/>
    </xsd:sequence>
  </xsd:complexType>

</xsd:schema>

```

Given that an instance of the Parent business object is parent, which of the following fragment of code sets the GrandChild's name attribute to be "John Doe"?

- A. parent.setString("name", "John Doe");
- B. DataObject grandchild = parent.createDataObject("grandChild");
grandchild.setString("name", "John Doe");
- C. DataObject child = parent.createDataObject("child");
DataObject grandchild = child.createDataObject("grandChild");
grandchild.setString("name", "John Doe");
- D. DataObject child = parent.createDataObject("http://Test/Child");
DataObject grandchild = child.createDataObject("http://Test/GrandChild");
grandchild.setString("name", "John Doe");

Answer: C

Question No : 9 - (Topic 1)

An integration developer is planning a modular design to support the implementation of a large application. Which of the following BEST describes the approach that should be taken by the integration developer while designing the solution in order to achieve module reuse and application maintainability over time?

- A.** Use separate modules to expose the logical units of function as separate services and use a single library to hold the commonly used data types, interfaces, and transformation artifacts.
- B.** Create multiple modules and libraries to expose the functions that compose the application as separate services. The services should be selected based on the relative module sizes and complexity of the functions provided.
- C.** Identify the portions of the code that are most likely to be reused and deploy each as a separate logical unit into multiple libraries as independent services. Use a single module to invoke the services deployed in the libraries.
- D.** Determine which components should be logically deployed on separate servers based on the performance requirements of the application and package the code into modules so that there will be one module per server in the infrastructure.

Answer: A

Question No : 10 - (Topic 1)

An integration developer creates a new version of a current module and needs to update the SCA module version in the WebSphere Integration Developer test environment. Which of the following tasks will the integration developer need to perform in order to create new instances of the latest version of the process?

- A.** Run serviceDeploy against the exported, versioned module file to generate an installable EAR file.
- B.** Export the versioned module as an EAR file and manually deploy it using the administrative console.
- C.** Add the versioned module to UTE via Add/Remove projects option and confirm that the status of the project changes to published.
- D.** Create process migration specification by selecting the process components in the module that apply and then deploy the exported EAR file.

Answer: A

Question No : 11 - (Topic 1)

A bank implements a loan processing service, Module A, which invokes services provided by several other SCA applications. During the integration testing, the developer finds a problem with the Module A. Since the implementation is very complex, the developer decides to enable cross-component trace to troubleshoot. Which of the following statements is TRUE?

- A. The loan processing service, along with the associated modules have to be deployed onto the same server.
- B. All associated applications must be loaded in the current workspace in order for the cross-component trace to work.
- C. Cross-component trace can be enabled through the Server Logs view in the WebSphere Integration Developer or from the administrative console.
- D. If cross-component trace is enabled with data snapshot, the system captures the data sent in and passed between SCA components in the WPRCSDB database.

Answer: C

Question No : 12 - (Topic 1)

An integration developer is testing a microflow which invokes several external services. This microflow should take no longer than 30 seconds to complete. During the execution, a transaction timeout exception was thrown. The developer suspects that one of the external services is taking too long to return the response. Which of the following methods is the BEST approach to troubleshoot this problem?

- A. Use a BPC Explorer to check execution time of the each invocation activity.
- B. Use the Tivoli Performance Viewer to check the duration of the service invocation.
- C. Examine the SystemOut.log for the associating transaction exception stack-trace.
- D. Implement a fault handler in the microflow and collect additional information through the exception stack-trace.

Answer: C

Question No : 13 - (Topic 1)

Refer to the Exhibit. The exhibit shows a portion of a process state view monitoring an Account Verification process instance.