

Exam Express

Exam EE0-425

packereer packetshaper 6 certification exam

Version: 5.0

[Total Questions: 120]

Topic break down

Topic	No. of Questions
Topic 0: A	60
Topic 1: B	60

Topic 0, A

A

Question No : 1 - (Topic 0)

Which two features are compatible with Direct Standby? (Choose two.)

- A. user events
- B. ATM support
- C. compression
- D. traffic shaping

Answer: A,D**Question No : 2 - (Topic 0)**

You have a PacketShaper 1550 that you need to upgrade because you have increased your WAN link from 512 Kbps to 100 Mbps. What is the minimum PacketShaper that will support this configuration?

- A. PacketShaper 2500
- B. PacketShaper 4500/ISP
- C. PacketShaper 6500
- D. PacketShaper 8500/ISP

Answer: C**Question No : 3 DRAG DROP - (Topic 0)**

Click the Task button.

Place the image upgrade steps in the correct order.

Place the image upgrade steps in the correct order

Order

place here	image load 9.258/latest.zoo
place here	telnet <PacketShaper IP address>
place here	cd 9.258/, go to binary mode
place here	ftp <PacketShaper IP address>
place here	put latest.zoo

Steps

First	Third	Fifth	
Second	Fourth		Done

Answer:

Place the image upgrade steps in the correct order

Order

Fourth	image load 9.258/latest.zoo
Fifth	telnet <PacketShaper IP address>
First	cd 9.258/, go to binary mode
Second	ftp <PacketShaper IP address>
Third	put latest.zoo

Steps

First	Third	Fifth	
Second	Fourth		Done

Question No : 4 - (Topic 0)

Which CLI command would you use to identify the traffic class(es) and service type(s) currently being used by a user with an IP address of 10.1.1.5?

- A. class show 10.1.1.5
- B. hostdb show 10.1.1.5
- C. traffic active 10.1.1.5
- D. traffic flow -tupCA 10.1.1.5

Answer: D

Question No : 5 - (Topic 0)

Which two services are compressible using the Xpress feature? (Choose two.)

- A. HTTP
- B. Citrix applications
- C. UDP- Video Frame
- D. Peer-to-Peer file sharing

Answer: A,B

Question No : 6 - (Topic 0)

After changing the IP addressing within your network, you cannot access a PacketShaper from telnet or through the web interface. You connect to the PacketShaper using HyperTerminal. Which two commands will correct the IP address? (Choose two.)

- A. ip address
- B. setup guide
- C. setup address
- D. setup ipaddress

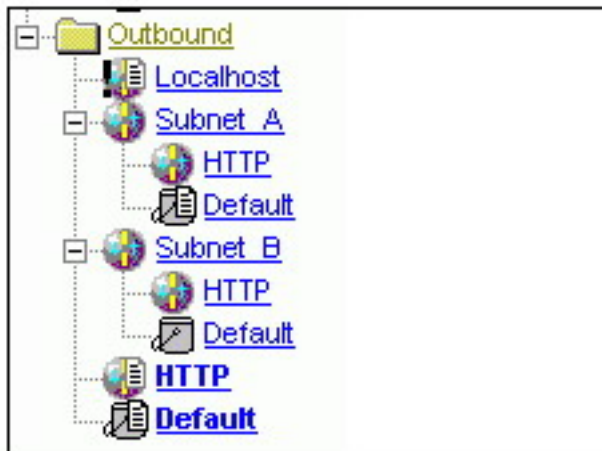
Answer: B,D

Question No : 7 - (Topic 0)

Click the Exhibit button.

A flow starts that hits the class Outbound/Subnet_A/HTTP.

Which policy is applied to the flow?



- A. Outbound/HTTP
- B. Outbound/Default
- C. Outbound/Subnet_A/HTTP
- D. Outbound/Subnet_A/Default

Answer: A

Question No : 8 - (Topic 0)

You have just received a new PacketShaper to manage your private WAN and need to configure it. The PacketShaper has already been physically installed in the rack and connected inline between your local LAN switch and your WAN router. In addition to the WAN router, you also have an Internet router that will serve as your default gateway. Your laptop is also connected to the LAN switch.

You open a browser and try to connect to <http://unconfigured.packetshaper.com> in order to go through PacketShaper Guided Setup, but you cannot connect.

What is the reason for this?

- A. You are trying to connect to the wrong URL. The correct URL is <http://unconfigured.packeteer.com>.
- B. You forgot to include the proper port number in the URL. The URL should be <http://unconfigured.packetshaper.com:2000>.
- C. The PacketShaper must be inline between your laptop and the Internet in order for you to be able to connect to it using <http://unconfigured.packetshaper.com>.

D. You must run Guided Setup before deploying. You will not be able to connect to it using a browser until you remove it from the network and use the console cable and a terminal application to complete initial setup.

Answer: C

Question No : 9 - (Topic 0)

You are looking for a PacketShaper to support Xpress. Which three models are supported? (Choose three.)

- A. PacketShaper 1500
- B. PacketShaper 1550
- C. PacketShaper 2500
- D. PacketShaper 6500
- E. PacketShaper 8500/ISP

Answer: B,C,D

Question No : 10 - (Topic 0)

Which statement about hostlists is true?

- A. You can re-use the same hostlist for multiple classes.
- B. You cannot have DNS names and IP addresses in the same list.
- C. You can copy a hostlist created under /Inbound to /Outbound to reuse it.
- D. You cannot add DNS names to a list if you have not set the DNS server in Setup.

Answer: A

Question No : 11 - (Topic 0)

Why would you configure the Failover feature in Setup?

- A. to detect if a Frame Relay PVC has failed and to adjust the link speed as appropriate
- B. to detect if a site router's primary link has failed and to adjust the link speed as appropriate
- C. to detect if a site router has failed and to configure a new site router IP address and link speed

D. to detect if a WAN router has become unavailable and to adjust the total link speed as appropriate

Answer: B

Question No : 12 - (Topic 0)

You have created a class for Subnet_C using the subnet and mask of Subnet_C. What must you do next to guarantee 100 kbps of bandwidth per IP host for Subnet_C (class C subnet)?

- A. add a partition of 100k fixed to Subnet_C class
- B. add a Rate Policy of 100k fixed to Subnet_C class
- C. go to Subnet_C class, add a Partition, add a Dynamic Subpartition for Single Address, Inside (subpartition size 100k)
- D. go to Subnet_C class, go to Partition, add a Dynamic Partition for Subnet, 8 CIDR bits, Inside (subpartition size 100k)

Answer: C

Question No : 13 - (Topic 0)

Given the following:

Inbound

Customer1 (minimum partition size = 1 Mbps)

Customer2 (minimum partition size = 512 Kbps)

FTP (minimum partition size = 384 Kbps)

HTTP (minimum partition size = 384 Kbps)

Default

Based on the above traffic tree, which two statements are true? (Choose two.)

- A. The FTP and HTTP classes are guaranteed a minimum of 384 Kbps each.
- B. The FTP and HTTP classes are guaranteed a minimum of 256 Kbps each.
- C. The FTP and HTTP classes are guaranteed a minimum of up to 1 Mbps total.
- D. The FTP and HTTP classes have oversubscribed the Customer2 parent partition.

Answer: B,D

Question No : 14 - (Topic 0)

You want to view the port number used by a traffic class. Which two commands can you use to view the ports used within the traffic class? (Choose two.)

- A. port show
- B. traffic flow
- C. traffic history
- D. class show (class name)

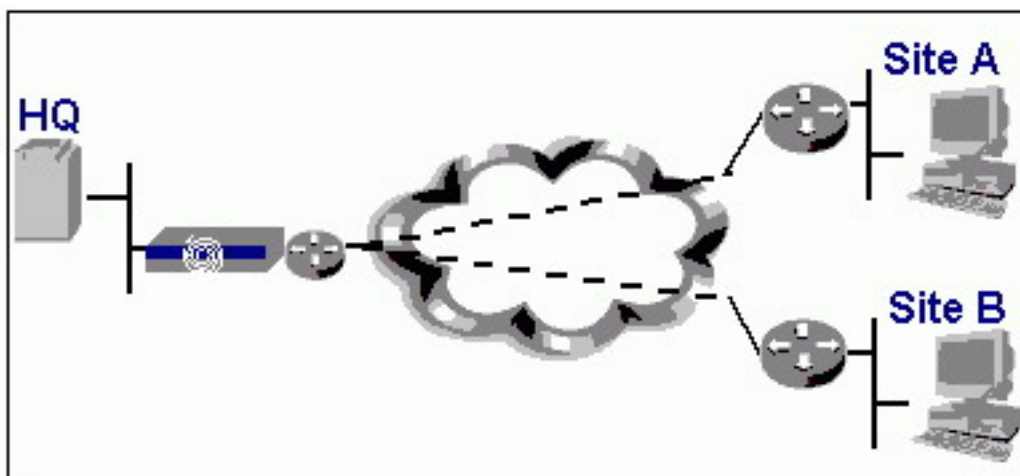
Answer: B,C

Question No : 15 - (Topic 0)

Click the Exhibit button.

The top level Report screen shows that Network Efficiency is currently below 90%.

What is the quickest way to determine whether this is a general link problem, associated with all traffic for a particular site, or associated with a particular class at a particular site?



- A. view the Top Ten - Network Efficiency
- B. enable the RTM "Worst Client & Server Analysis" feature for Site A and for Site B
- C. look at the Class specific graphs of Network Efficiency for Site A and then for Site B
- D. reorder the Monitor Screen table by clicking on the Guaranteed Rate Failure column title

Answer: A

Question No : 16 - (Topic 0)

A university wants each dormitory student to receive a minimum of 30 Kbps and a maximum of 150 Kbps to be used in any way. Which control mechanism would be the most effective in ensuring this?

- A. Rate Policy
- B. Fixed Partition
- C. Burstable Partition
- D. Dynamic Subpartition

Answer: D

Question No : 17 - (Topic 0)

Why is the Round Trip Time (RTT) significant when reviewing Network Delay?

- A. The RTT indicates the amount of time it takes for one packet to make the full round trip between two hosts. If this value increases, it is indicative of congestion on the network.
- B. The RTT indicates the amount of time it takes for an entire transaction to make the full round trip between two hosts. If this value increases, it is indicative network card issues on the server.
- C. The RTT indicates the amount of time it takes for one packet to make the full round trip between two hosts. If this value increases, it is indicative of an increase in the size of the transaction, not necessarily indicative of congestion on the network.
- D. The RTT indicates the amount of time it takes for an entire transaction to make the full round trip between two hosts. If this value increases, it is indicative of an increase in the size of the transaction, not necessarily indicative of congestion on the network.

Answer: A

Question No : 18 - (Topic 0)

You want to enable secure web access to the PacketShaper from the WAN using port 443 only. How would you disable standard web access using port 80?

- A. disable HTTP access in the Security Setup Page