

# IBM

## Exam 000-273

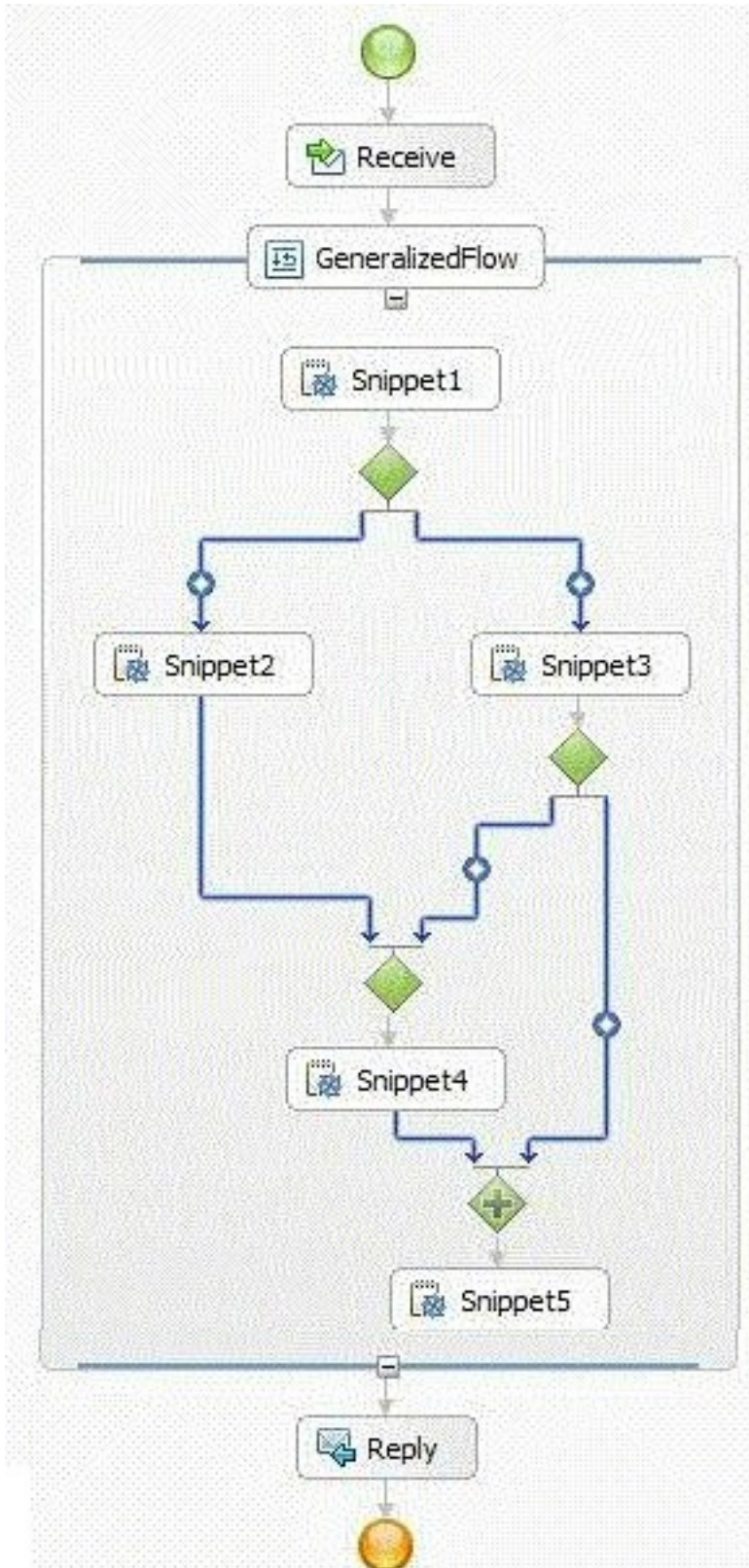
### IBM Business Process Manager Advanced V8.0 Integration Development

Version: 6.0

[ Total Questions: 53 ]

**Question No : 1**

An integration developer has configured a BPEL business process for a customer, as shown below:



What behavior will the integration developer observe when executing the flow?

- A. It is possible for both Snippet2 and Snippet3 to execute.
- B. The execution order of the links entering Snippet2 and Snippet3 has no impact on the process flow.
- C. The gateway leading into Snippet5 will cause an error because there is a deadlock in the process flow.
- D. The gateway leading into Snippet4 will cause an error because the link exiting Snippet2 has no condition.

**Answer: C**

**Question No : 2**

An integration developer registers two Process Centers with each other and needs to share a child toolkit 'TK-Child' while preserving the dependency with its parent toolkit 'TK-Parent'. How should a integration developer accomplish this? Set Snapshot status of:

- A. TK-Child to 'New' and share it with other Process Centers
- B. TK-Child to 'Released' and share it with other Process Centers
- C. TK-Parent to 'Released', TK-Child to 'New' and share both toolkits with other Process Centers
- D. TK-Parent to 'Released', TK-Child to 'Released' and share both toolkits with other Process Centers

**Answer: D**

**Question No : 3**

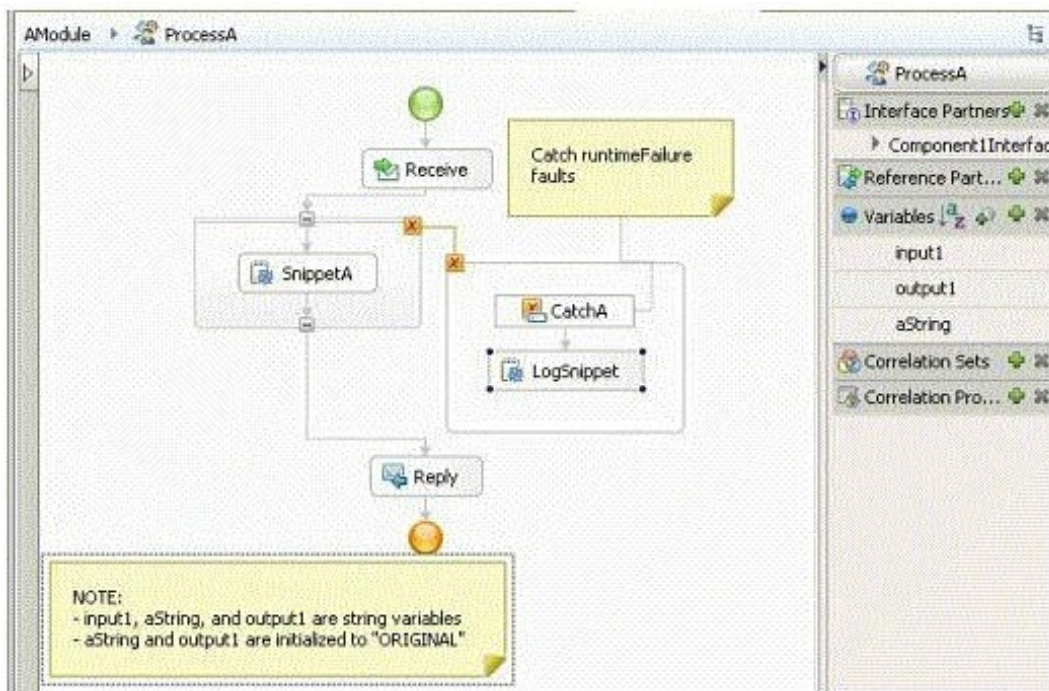
A client requires that a new BPEL process return a fault message to the requester in case the process does not complete correctly. The integration developer has added a fault handler to the process to catch all exceptions. How should the integration developer return the fault message?

- A. Use a throw activity of a business fault.
- B. Use a reply activity using a standard fault.
- C. Use a reply activity using a business fault defined in the interface.
- D. Use a rethrow activity in the fault handler on the process scope using a fault defined in the interface.

Answer: C

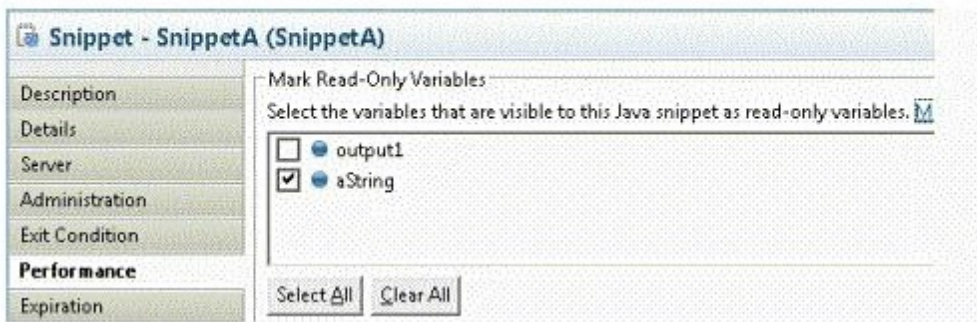
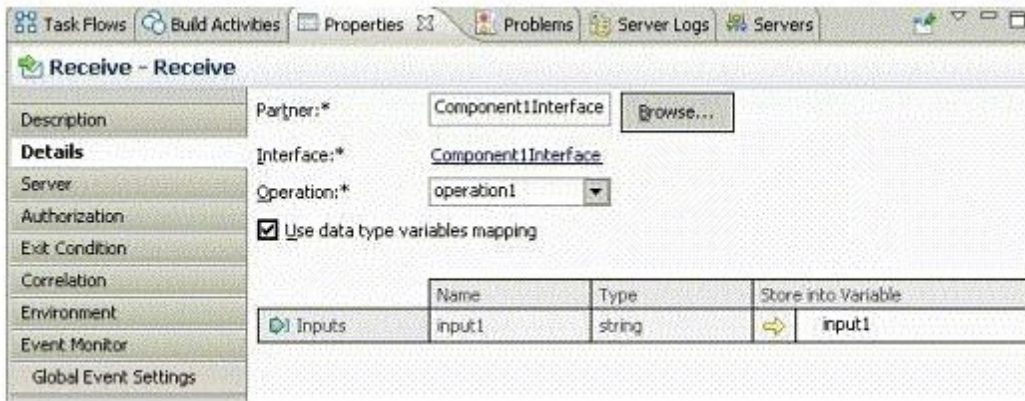
**Question No : 4**

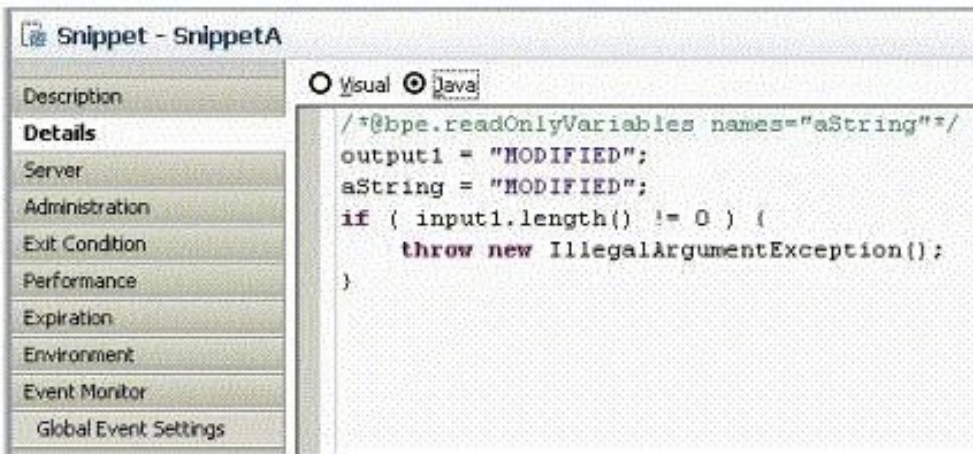
An integration developer has implemented the business process shown in the exhibits below.





IBM 000-273 : Practice Test



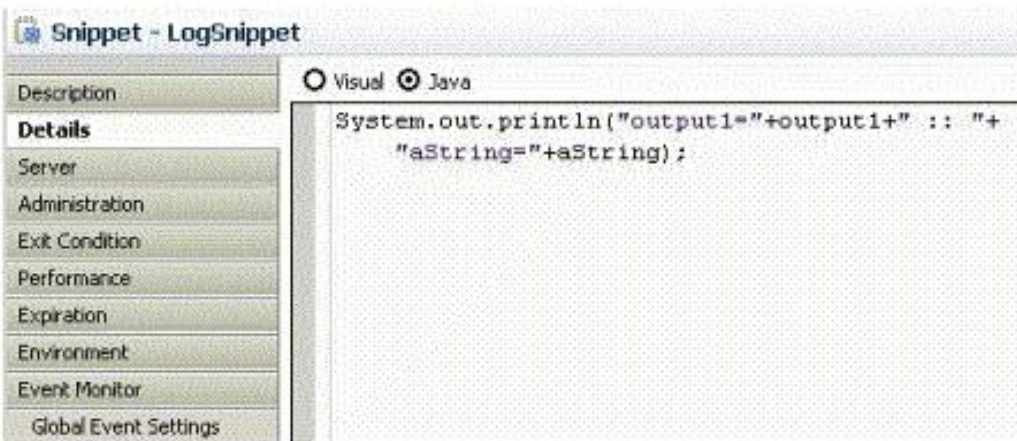


Snippet - SnippetA

Visual  Java

```

/*@bpe.readOnlyVariables names="aString"*/
output1 = "MODIFIED";
aString = "MODIFIED";
if ( input1.length() != 0 ) {
    throw new IllegalArgumentException();
}
  
```



Snippet - LogSnippet

Visual  Java

```

System.out.println("output1="+output1+" :: "+
    "aString="+aString);
  
```

If the integration developer starts an instance of the ProcessA process with an input of "HELLO", which of the following strings will the LogSnippet snippet write to System.out? If the integration developer starts an instance of the ProcessA process with an input of "HELLO", which of the following strings will the LogSnippet snippet write to System.out? If the integration developer starts an instance of the ProcessA process with an input of "HELLO", which of the following strings will the LogSnippet snippet write to System.out?

- A. output1=ORIGINAL :: aString=ORIGINAL
- B. output1=ORIGINAL :: aString=MODIFIED
- C. output1=MODIFIED :: aString=ORIGINAL
- D. output1=MODIFIED :: aString=MODIFIED

**Answer: C**