

**000-537**

**000-537**

# **IBM Tivoli Directory Server V6.3 Implementation**

**Version 14.6**

000-537

**QUESTION NO: 1**

The customer wants to deploy IBM Tivoli Directory Server V6.3 (ITDS) in a Solaris environment. On which two Solaris platforms can ITDS be deployed? (Choose two.)

- A. PowerPC
- B. Solaris 32-bit
- C. SUNW, Ultra-1
- D. Solaris SPARC 64-bit
- E. Solaris Global Zone on Solaris 10

**Answer: DE**

**QUESTION NO: 2**

The customer must deploy a component of IBM Tivoli Directory Server V6.3 (ITDS) 32-bit on AIX. Which component can be deployed in this manner?

- A. ITDS Client
- B. ITDS Server
- C. ITDS Proxy Server
- D. ITDS Web Administration Tool

**Answer: A**

**QUESTION NO: 3**

The customer wants to install the IBM Tivoli Directory Server (ITDS) Web Administration Tool. What is a prerequisite to accomplish this?

- A. IBM HTTP Server
- B. Microsoft IIS Server
- C. Oracle WebLogic Server
- D. IBM WebSphere Application Server

**Answer: D**

**QUESTION NO: 4**

000-537

The customer has a requirement to secure LDAP communications. Which statement is true for server authentication?

- A. LDAP client must have a public key and associated client certificate in the client's key database file.
- B. LDAP server must have a public key and associated client certificate in the client's key database file.
- C. LDAP client must have a private key and associated server certificate in the client's key database file.
- D. LDAP server must have a private key and associated server certificate in the server's key database file.

**Answer:** D

**QUESTION NO: 5**

Given the security requirements for securing passwords in an IBM Tivoli Directory Server V6.3 environment, which three encryption algorithms are available? (Choose three.)

- A. des
- B. md7
- C. aes512
- D. aes256
- E. sha384
- F. sha512

**Answer:** D, E, F

**QUESTION NO: 6**

Which password encryption supports two-way encryption?

- A. AES
- B. MD5
- C. Crypt
- D. SHA1

**Answer:** A

000-537

**QUESTION NO: 7**

In the IBM Tivoli Directory Server V6.3 (ITDS) requirements document for a customer project there is a requirement for a proxy server for distributed data. What planning for the proxy server is necessary?

- A. to act as a front-end server to distribute requests to multiple ITDS servers
- B. to act as a back-end server to distribute requests to multiple ITDS servers
- C. to set up logical connections between ITDS and Active Directory for distributed data
- D. to set up logical connections between ITDS and SunOne Directory for distributed data

**Answer: A**

**QUESTION NO: 8**

What is a requirement for an IBM Tivoli Directory Server (ITDS) Proxy Server?

- A. a DB2 database
- B. an ITDS LDAP Server
- C. an Active Directory forest
- D. an IBM WebSphere Edge Server

**Answer: B**

**QUESTION NO: 9**

The customer has a requirement to send updates through a proxy server. What authority should be planned?

- A. Anonymous User
- B. System Administrator
- C. Local Administration Group Member
- D. Global Administration Group Member

**Answer: D**

**QUESTION NO: 10**

How can a custom attribute or objectclass definition be added to the schema of an IBM Tivoli Directory Server (ITDS) instance?

000-537

- A. use the LDAP Control Center
- B. use the ITDS Instance Administration Tool
- C. use the ITDS Web Administration Tool
- D. add the definition to the ibmslapd.conf file

**Answer: C**

**QUESTION NO: 11**

Which two attribute types are available on an objectclass definition? (Choose two.)

- A. nominal
- B. required
- C. optional
- D. unrestricted
- E. generalized date syntax

**Answer: B, C**

**QUESTION NO: 12**

Applications authenticate to the IBM Tivoli Directory Server V6.3. Which two pieces of information are used for authentication? (Choose two.)

- A. cn attribute
- B. unique identified name
- C. ibm-entryuuid attribute
- D. userPassword attribute
- E. full distinguished name

**Answer: D, E**

**QUESTION NO: 13**

Which file format is used to load customer data?

- A. DSML files from a Web Application Server
- B. MS Word document of department entries

000-537

- C. an XML extract from a department spreadsheet
- D. LDIF files extract from a Human Resources system

**Answer: D**

**QUESTION NO: 14**

What are two common attributes used to create a person entry? (Choose two.)

- A. sn
- B. cn
- C. uid
- D. lastname
- E. givenname

**Answer: A, B**

**QUESTION NO: 15**

What type of objectclass is required in order to define an LDAP entry to be loaded into an IBM Tivoli Directory Server V6.3 environment?

- A. auxiliary
- B. absolute
- C. structural
- D. hierarchical

**Answer: C**

**QUESTION NO: 16**

Which versions of IBM Tivoli Directory Server (ITDS) can be directly migrated to ITDS V6.3?

- A. only ITDS V6.2
- B. all ITDS V6.x versions
- C. all previous ITDS versions
- D. all ITDS V5.x and V6.x versions

**Answer: B**

000-537

**QUESTION NO: 17**

Which action is typically taken prior to performing a migration of an IBM Tivoli Directory Server environment?

- A. backup of Audit log
- B. backup of user data
- C. backup of replication database
- D. backup of the Changelog database

**Answer: B**

**QUESTION NO: 18**

Which tool can be used for an IBM Tivoli Directory Server migration?

- A. idsxcfg utility
- B. idsimigr utility
- C. idmdiradm utility
- D. idsldif2db utility

**Answer: B**

**QUESTION NO: 19**

The customer would like an automated backup of their entire directory server instance configuration, schema and data with minimal downtime. Which IBM Tivoli Directory Server (ITDS) backup methodology would be appropriate?

- A. perform the db2 backup utility
- B. perform the idsdb2ldif utility
- C. configure online backup using the idsxcfg utility
- D. schedule online backup using the ITDS Web Administration Tool

**Answer: D**

**QUESTION NO: 20**

**000-537**

Which two IBM Tivoli Directory Server (ITDS) interfaces are used for both online backup and restore? (Choose two.)

- A. Administrator Console Tool
- B. idsdbbackup command line
- C. idslapexop command line
- D. ITDS Web Administration Tool
- E. idsdbrestore command line

**Answer:** C, D

**QUESTION NO: 21**

During the requirements gathering phase of a project, the customer expressed a desire to use IBM DB2 (DB2) commands for backup and restore. Which statement is true as an advantage of using DB2 commands for backup/restore?

- A. DB2 backup on an AIX machine can be restored on a Solaris machine.
- B. DB2 instance owners and administrators are preserved in the backed-up database.
- C. DB2 backup from a previous version of DB2 can be restored to a more current version of DB2.
- D. DB2 configuration parameters and database optimization parameters are preserved for the backed-up database.

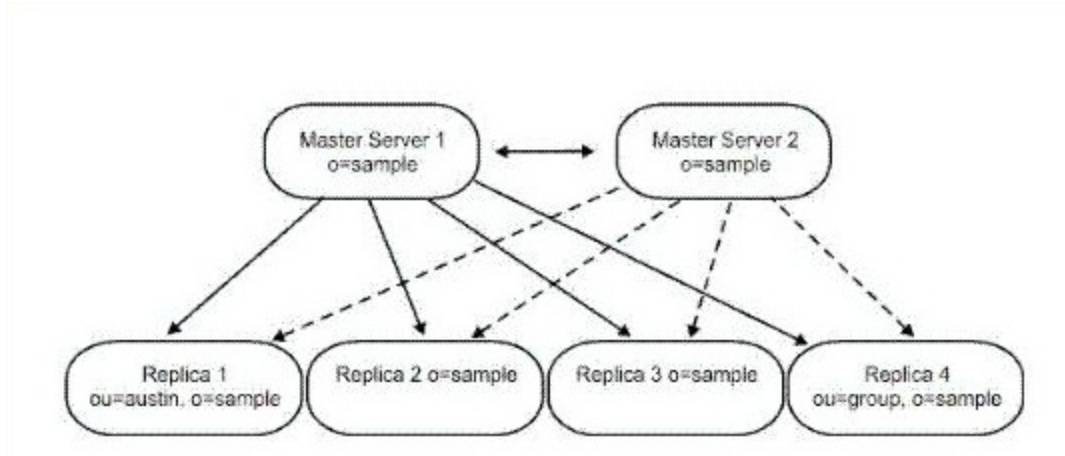
**Answer:** D

**QUESTION NO: 22**

Click the Exhibit button.



000-537



The customer wants to replicate LDAP data. The Exhibit describes which replication topology?

- A. peer replication
- B. gateway replication
- C. forwarding replication
- D. cascading replication

**Answer: A**

**QUESTION NO: 23**

A customer wants to partially replicate LDAP data. Which statement is true?

- A. attributes that are to be replicated are specified using a replication filter
- B. attributes that are to be replicated are specified using the replication policy
- C. objectclasses that are to be replicated are specified using a replication URL
- D. objectclasses that are to be replicated are specified using the replication policy

**Answer: A**

**QUESTION NO: 24**

The customer must replicate LDAP data. What is a valid replication topology for an IBM Tivoli Directory Server V6.3 environment?

- A. replication of subtrees of the Directory Information Tree to specific servers
- B. replication of cn=localhost of the Directory Information Tree to specific servers
- C. replication of cn=changelog of the Directory Information Tree to specific servers

000-537

D. replication of cn=configuration of the Directory Information Tree to specific servers

**Answer: A**

**QUESTION NO: 25**

What is the method for installing IBM Tivoli Directory Server V6.3 on a UNIX system without a graphical user interface?

- A. run a Java program
- B. use InstallShield MultiPlatform
- C. use utilities provided by the operating system
- D. extract install files using unzip/untar commands

**Answer: C**

**QUESTION NO: 26**

Which IBM DB2 product must be selected for an IBM Tivoli Directory Server V6.3 installation using the db2\_install utility?

- A. ESE
- B. RTCL
- C. JDBC
- D. CLIENT

**Answer: A**

**QUESTION NO: 27**

Which GSKit version is included with IBM Tivoli Directory Server V6.3?

- A. GSKit V6.3
- B. GSKit V7.0
- C. GSKit V8.0
- D. GSKit V10

**Answer: C**