

IBM 000-957

IBM XIV Storage System Technical Solutions V3
Version: 6.0

Topic 1, Volume A**QUESTION NO: 1**

A customer wants to use an XIV system to replace legacy storage for a Microsoft Exchange environment, and is concerned about backup windows.

Which option would solve this concern?

- A. Consistency groups and full volume copies
- B. XIV snapshot technology and FlashCopy Manager
- C. XIV snapshot technology with iSCSI replication
- D. Utilize Quality of Service performance classes

Answer: B

Explanation:

QUESTION NO: 2

What is the benefit of the IBM XIV Storage Management Console for the VMware vCenter plug-in?

- A. integrates XIV volume allocation to VMware datastores
- B. integrates VMware datastore creation into the XIV GUI
- C. automates VMware datastore failover between XIV systems
- D. enables the VMware vCenter console to manage XIV replication

Answer: A

Explanation:

QUESTION NO: 3

Which features best match the XIV system's hardware benefits?

- A. Automatic tiering and scalability
- B. Massive parallelism and scalability
- C. Scalability and RAID implementation
- D. Massive parallelism and hot spot management

Answer: B

Explanation:

QUESTION NO: 4

Which of the following is a TRUE statement about XIV snapshots?

- A. XIV snapshots utilize a copy-on-write design.
- B. XIV snapshots copy data to create a snapshot.
- C. XIV snapshots utilize a redirect-on-write design.
- D. A maximum of 8000 snapshots can be created concurrently.

Answer: C

Explanation:

QUESTION NO: 5

How many more iSCSI ports does a 10 module XIV system Gen3 Model 114 have than a 10 module XIV system Model A14?

- A. 8
- B. 10
- C. 12
- D. 16

Answer: B

Explanation:

QUESTION NO: 6

Which XIV system feature enables proactive notification to the IBM service center?

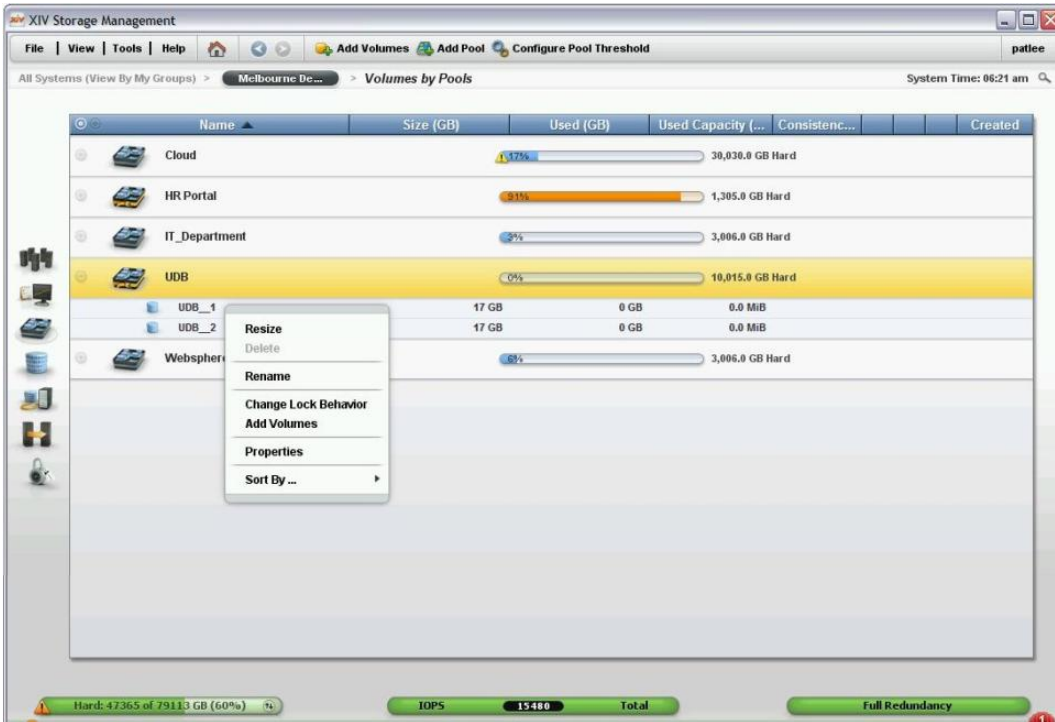
- A. Call Home
- B. SNMP traps
- C. Remote Support
- D. XIV Remote Service Center

Answer: D

Explanation:

QUESTION NO: 7

Using the exhibit as a reference, what are the two reasons the delete option cannot be selected for the UDB storage pool? (Select two)



The screenshot shows the XIV Storage Management interface. The 'Volumes by Pools' view is active. The 'UDB' storage pool is highlighted in yellow. A context menu is open over the UDB pool, showing options: Resize, Delete, Rename, Change Lock Behavior, Add Volumes, Properties, and Sort By... The 'Delete' option is disabled (greyed out). The table below shows the details of the storage pools and volumes.

Name	Size (GB)	Used (GB)	Used Capacity (%)	Used Capacity (GB)	ConsistenC...	Created
Cloud			17%	38,038.0 GB	Hard	
HR Portal			21%	1,305.0 GB	Hard	
IT_Department			9%	3,006.0 GB	Hard	
UDB			0%	10,015.0 GB	Hard	
UDB_1	17 GB	0 GB		0.0 MiB		
UDB_2	17 GB	0 GB		0.0 MiB		
Websphere			6%	3,006.0 GB	Hard	

At the bottom of the interface, there are status bars: Hard: 47365 of 79113 GB (60%), IOPS: 15480, Total, and Full Redundancy.

- A. The pool contains volumes
- B. The storage pool is locked
- C. The pool contains snapshots
- D. The storage pool is mapped to a cluster
- E. The administrator has default privileges

Answer: A,C

Explanation:

QUESTION NO: 8

What are two benefits of the XIV system's storage virtualization architecture? (Select two)

- A. Hardware redundancy
- B. Dynamic rate adaption
- C. Online data migration

- D. Preserves server connectivity
- E. Differential snapshot capability

Answer: C,E

Explanation:

QUESTION NO: 9

In an XIV system Gen3, what is the maximum number of inactive modules with Capacity on Demand (CoD) enabled?

- A. 6
- B. 9
- C. 3
- D. 7

Answer: C

Explanation:

QUESTION NO: 10

A technical specialist needs the IBM approved checklist to provide an IBM Technical Delivery Assessment (TDA). Where is this checklist located?

- A. IBM Techline
- B. Solution Assurance Library
- C. In the box of the new equipment
- D. It is provided when the unit is registered

Answer: B

Explanation:

QUESTION NO: 11

A customer has 40 hosts, each with a 1 TB data volume. All hosts are less than 20% utilized. As part of an XIV consolidation, all host data volumes will be copied using a standard file copy tool.

In order to ensure data integrity, how much hard capacity should be allocated on the XIV system?

- A. 8 TB
- B. 16 TB
- C. 32 TB
- D. 40 TB

Answer: D

Explanation:

QUESTION NO: 12

Which sophisticated method distributes data on all drives in an XIV system?

- A. Pseudo-random algorithm
- B. Non-linear data algorithm
- C. Pattern of non-random blocks
- D. Sequential distribution of data

Answer: A

Explanation:

QUESTION NO: 13

What two recommendations are considered best practice when using an XIV system with VMware ESX4.1? (Select two)

- A. Use larger LUNs instead of LVM extents.
- B. Always ensure Async mirroring is employed.
- C. Always use the fixed path routing selection.
- D. Always use round-robin path routing selection.
- E. Always use the latest manufacturer's HBA drivers with the VMware OS

Answer: A,D

Explanation:

QUESTION NO: 14

For an XIV system, what is the recommended location for cooling tiles?

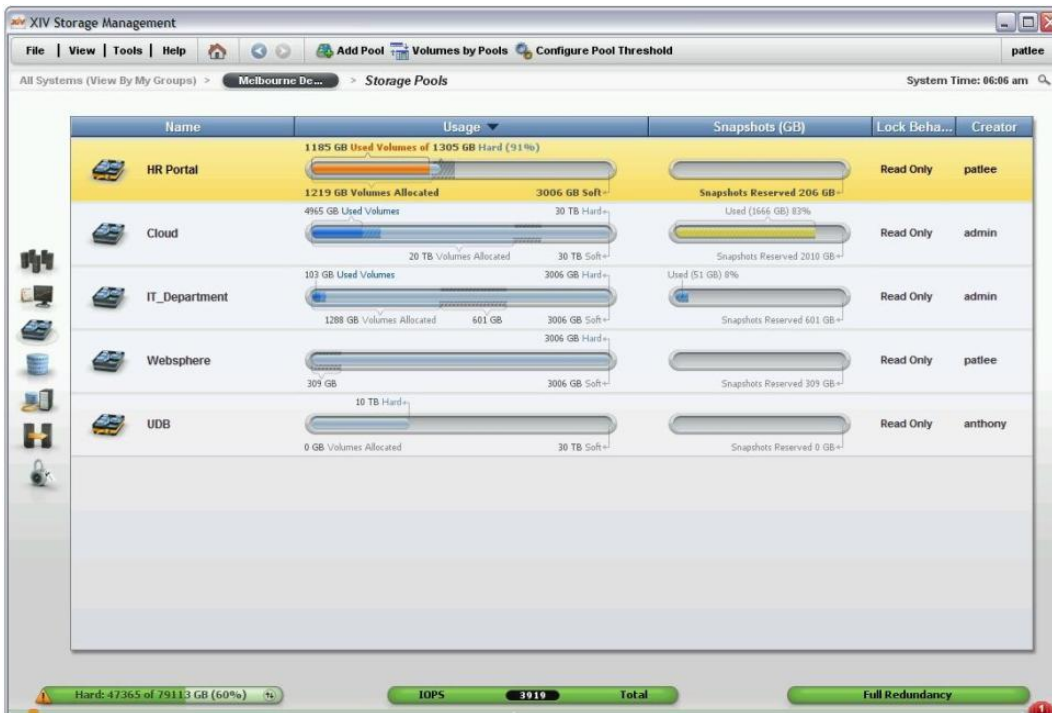
- A. 1 tile in front of the system
- B. 2 tiles directly beneath the system
- C. 2 tiles directly in front of the system
- D. 1 tile at the front and 1 at the rear of the system

Answer: C

Explanation:

QUESTION NO: 15

Referring to the exhibit, what action must the administrator take to address the storage event on the HR Portal storage group?



- A. Resize volumes
- B. Remove snapshots
- C. Increase hard limit
- D. Increase soft limit

Answer: C

Explanation:

QUESTION NO: 16

On an XIV system, how can the servers with the heaviest I/O in real time be identified?

- A. XIV Top
- B. state_list
- C. host_list/s io
- D. Statistics in the XIV GUI

Answer: A

Explanation:

QUESTION NO: 17

What is required to manage an XIV system Gen3 with IBM Systems Director?

- A. VAAI
- B. Host Attachment Kit
- C. MIB file for the XIV
- D. Embedded CIMOM for the XIV

Answer: C

Explanation:

QUESTION NO: 18

On an XIV system, what is an effect on the volumes within a storage pool with default settings when the hard capacity limit is reached?

- A. All volumes within the pool immediately go offline
- B. All volumes within the pool enter the Read Only state
- C. The space reclamation process automatically expands the pool
- D. Hard capacity is automatically allocated from alternative pools

Answer: B

Explanation:

QUESTION NO: 19

What is the standard warranty period for an XIV system Gen3 2812-114?

- A. 1 year
- B. 2 years
- C. 3 years
- D. 5 years

Answer: C

Explanation:

QUESTION NO: 20

Compared to other IBM storage offerings, which of the following is unique functionality on an XIV system?

- A. automated load balancing
- B. eliminates storage tiering
- C. support for remote monitoring
- D. easy-to-use graphical user interface

Answer: B

Explanation:

QUESTION NO: 21

A new customer wants to purchase XIV system Gen3 architecture. They need 20 TB of usable storage with capacity to expand, and iSCSI capabilities, but the budget for this project is limited.

What XIV system Gen3 configuration meets these requirements?

- A. 9 module system with 4 Capacity on Demand activations
- B. 6 module system with 3 Capacity on Demand activations
- C. 9 module system with 3 Capacity on Demand activations
- D. 15 module system with 3 Capacity on Demand activations

Answer: B

Explanation:

QUESTION NO: 22

What new technology is used in an XIV system Gen3 to interconnect the modules?

- A. Redundant FDDI switches
- B. Redundant FCoE connectivity
- C. Redundant InfiniBand switches
- D. Redundant 10Gb Ethernet switches

Answer: A

Explanation:

QUESTION NO: 23

Which bus type is used by XIV system Gen3 modules to facilitate faster communication with disk drives?

- A. RIO
- B. FC-AL
- C. PCI-eGen2
- D. InfiniBand

Answer: C

Explanation:

QUESTION NO: 24

A customer needs to migrate Linux EXT3 filesystems from a standalone host's internal disks to a Linux partition on an IBM z10 with XIV storage.

Which of the following can be used to achieve this task?

- A. Use IBM SAN Volume Controller
- B. Use the XIV data migration facility
- C. Use secure copy (SCP) on the Linux partition
- D. Use IBM Transparent Data Migration Facility (TDMF) for z/OS

Answer: C

Explanation: