

Citrix 1Y0-A05

**Implementing Citrix XenApp 5.0 for Windows Server
2008
Version: 5.0**

Topic 1, Volume A**QUESTION NO: 1**

An administrator currently has Secure Gateway and web interface on the same server in the DMZ. After learning about Access Gateway, the administrator decided to purchase two units for redundancy that will be located in the DMZ and implement the increased functionality that Access Gateway offers. Two new Interface servers will be introduced. Where should the administrator place the web interface servers?

- A. Both Web Interface servers should be placed in the DMZ
- B. One Web interface server should be placed on the internal network and one web interface server should be placed on the external network
- C. Both Web Interface servers should be placed on the internal network
- D. One web interface server should be placed in the DMZ and one web interface server should be placed on the internal network

Answer: C

Explanation: When you remove Secure Gateway from the DMZ and replace it with the Access Gateway, you can move the Web Interface to your internal secure network. The Access Gateway authenticates and authorizes users and then connects to the Web Interface. This provides greater security because there are two fewer Windows servers in the DMZ. (Installation Guide p.102)

QUESTION NO: 2

An administrator decided to make a number of video-based training packages available to the Finance department through Citrix XenApp. The Citrix XenApp farm silo's its applications and all Finance Applications are in the Finance Application silo. Other application silos include Technical, Sales and workflow. Where can an administrator enable multimedia optimization for the finance training applications?

- A. A policy applied to all finance users
- B. Server properties
- C. Server farm properties
- D. A policy applied to all servers in the finance application silo

Answer: B

Explanation: All SpeedScreen Options are configured on a Per server or Per Farm Basis using the Properties Page of the Fram or each individual Server. Exceptions here are the SpeedScreen Latency Reduction (Done on a Per Server Basis using the "SpeedScreen Latency Reduction Manager") And SpeedScreen Image Acceleration (Done using Policies). In this case it would be the server Properties because the settings need to be applied only for the finance app and they

have their own Application silo.

QUESTION NO: 3

What should an administrator use to confirm the name of a Citrix License Server?

- A. The hostname command in a command prompt
- B. The basic information screen in the Windows 2008 system applet
- C. The query command in a command prompt
- D. The server information screen in the Access Management Console

Answer: A

Explanation: The command hostname is correct. This is the easiest way to identify what hostname a server is currently using.

QUESTION NO: 4

A single web interface server named xenappweb1.mycompany.com is currently being leveraged to host applications for Citrix users through HTTP. For additional redundancy and security as required by management, a second web interface server named xenappweb2.mycompany.com will be made available and load-balanced with a hardware load balancer and SSL will be used to secure all traffic to the web interface servers. In order to configure the environment to meet the requirements defined above, which three statements are valid configuration steps? (Choose three.)

- A. Create a new load balancing group on the load balancer that contains the web interface sites from each web interface server that are to be load balanced
- B. Create a new DNS entry for xenapp.mycompany.com and assign it the IP Address of the VIP on the hardware load balancer
- C. Install a root certificate on each web interface server that matches the certificate on the load balancer
- D. Create a new CNAME alias a DNS for xenapp.mycompany.com and add both web interface server names to the record for load balancing
- E. Install a separate SSL certificate on each server that matches the FQDN of each server

Answer: A,B,C

Explanation: Creating a CNAME Alias would be a valid way of doing things if you did not have Hardware load balancer. This would round Robin connections to each WebServer using DNS Round Robining. Installing a separate SSL Certificate matching the FQDN for each server would result in Certificate errors in the Browser because the initial connection would be to the load

balancer and that has a different FQDN.

QUESTION NO: 5

An administrator configured a session bandwidth policy. The administrator set a maximum bandwidth rule of 200 Kbps and placed a 50 Kbps and a 30% restriction on the audio channel. The effective bandwidth for the audio channel will be _____ kbps? (Choose the correct option to complete the sentence.)

- A. 50
- B. 60
- C. 15
- D. 200

Answer: A

Explanation: 50 is lower than 30% (which would be 60) so the 50 is what will be the effective limit as both have been defined but 50 would be reached first. Default full load is 90% and default no load is 10%

QUESTION NO: 6

To which Citrix service does Web Interface forward a user's logon credentials?

- A. MFCOM
- B. Independent Management Architecture
- C. WMI
- D. XML

Answer: D

Explanation: The Citrix Web Interface communicates only with the XML Service on the Xenapp Server. This is by default port 80 or 443 if SSL encryption is configured. It may be changed however if the need arises.

QUESTION NO: 7

How can an administrator turn off a policy rule without having to edit every policy that contains that rule?

- A. Lower the priority of the policy
- B. Change the Policy to deny
- C. Delete the Policy
- D. Change the rule in the highest priority policy to disabled

Answer: D

Explanation: Rules in a higher ranked policy override the same rules in a lower ranked policy.
(Course Ware p.349)

QUESTION NO: 8

The Citrix License Management Console runs on which two supported web servers? (Choose two.)

- A. Sun Java System Web Server
- B. Microsoft Internet Information Services (IIS)
- C. Apache HTTP Server
- D. IBM HTTP server

Answer: B,C

Explanation: The License Management Console runs as a Web service. Configure a Web service—either Apache or IIS—before you install the License Management Console. (Citrix eDocs on Licensing: Licensing Your Product->Getting Started with Citrix Licensing->Prerequisites->Configuring a Web Service)

QUESTION NO: 9

An administrator wants to provide access to a group of help desk users to manage sessions remotely on a server. Which two options are the most secure ways of solving this issue using the least privilege security model? (Choose two.)

- A. Assign only the administrative rights required within the Access Management Console
- B. Assign only the administrative rights required within the XenApp Advanced Configuration Tool
- C. Instruct the help desk users to install the XenApp Advanced Configuration tool and manage sessions from their workstation
- D. Instruct the help desk users to install the Access Management Console and manage sessions from their workstation

Answer: A,D

Explanation: Almost all Management Tasks have been moved to the Access Management Console

in Xenapp 5.0. The Advanced Configuration Tool (Previously the CMC) only handles Policies, zone and Printer Features now.

QUESTION NO: 10

Several new policies were recently created in a Citrix XenApp farm. A user has called stating that he cannot see client drivers or printers when connecting to the farm since the policies were implemented. What could an administrator use to determine which policies are conflicting?

- A. Policies Search Engine
- B. Report Center
- C. Event Viewer
- D. Diagnostic Facility

Answer: A

Explanation: The Policy search engine can be used to see a resultant set of Policies based on Criteria that the admin can define in the search. The first step when trouble shooting Policies should always be to use the Policy Search Engine to view the resultant policy.

QUESTION NO: 11

What should an administrator install to secure communication between the Web Interface server and Secure Gateway server?

- A. Secure Gateway Proxy in the DMZ
- B. Secure Gateway Service on a Citrix XenApp server in the internal network
- C. Web Interface server on the Citrix XenApp server in the internal network
- D. SSL Server certificate on the Web Interface server

Answer: D

Explanation: As the WI Server and the Secure Gateway server both need to be in the DMZ the best way to secure communications between the two is to install a SSL Certificate on the WI Server.

QUESTION NO: 12

An administrator should implement a restart schedule on a server with _____

- A. Low page file utilization
- B. High Processor utilization
- C. A down ICA listener
- D. A memory leak

Answer: D

Explanation: If there is an application that has a known memory leak on a server this would result in less and less memory being available over time. The best way to counter this sort of issue is to implement a reboot schedule on a per server basis. Reboots can be staggered so that not all servers are down at the same time in the farm.

QUESTION NO: 13

Which SpeedScreen technology can be adjusted using Citrix Policies?

- A. Image Acceleration
- B. Multimedia Acceleration
- C. Flash Acceleration
- D. Browser Acceleration

Answer: A

Explanation: Only SpeedScreen Image acceleration can be configured via Policy. All others are configured using the management console under "Speed Screen" either for the Farm or on a per server Basis. Exception is "Speed screen Latency reduction" this is configured on each server using the "SpeedScreen Latency Reduction Manager".

QUESTION NO: 14

Scenario:

An administrator has created three XenApp policies called Austin, Dallas and Houston. The Austin policy sets up session printers for the Austin location based on the subnet. The Dallas policy sets up session printers for Dallas based on user groups. The Houston policy sets up session printers for Houston and is applied to all the servers in the farm. As a result of these.

(Choose the correct option to complete the sentence.)

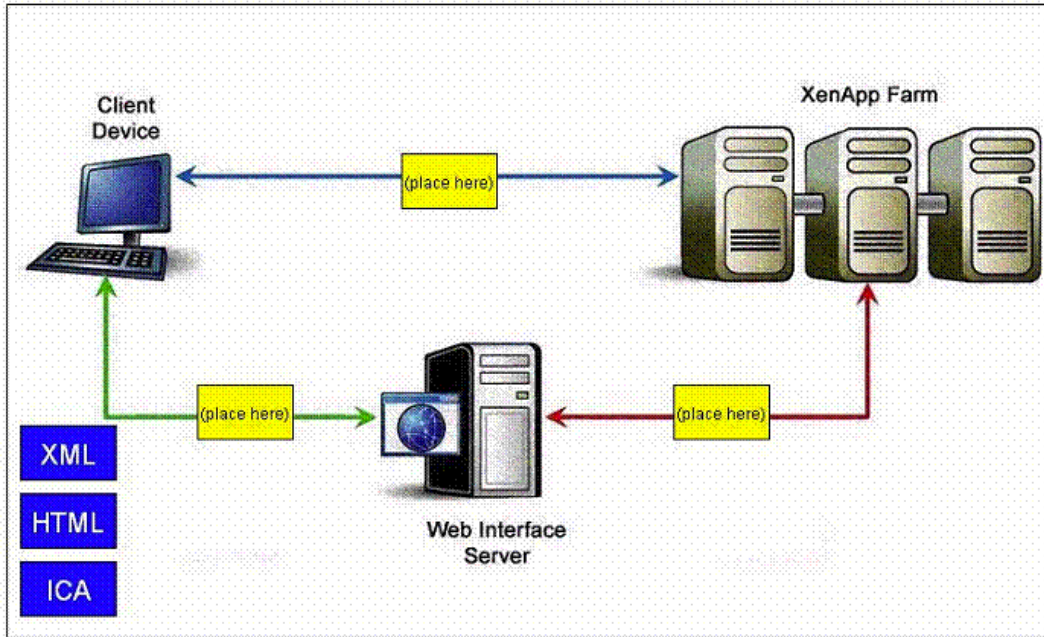
- A. only the Dallas
- B. only the Austin
- C. the Dallas and Austin
- D. the Austin, Dallas and Houston

Answer: D

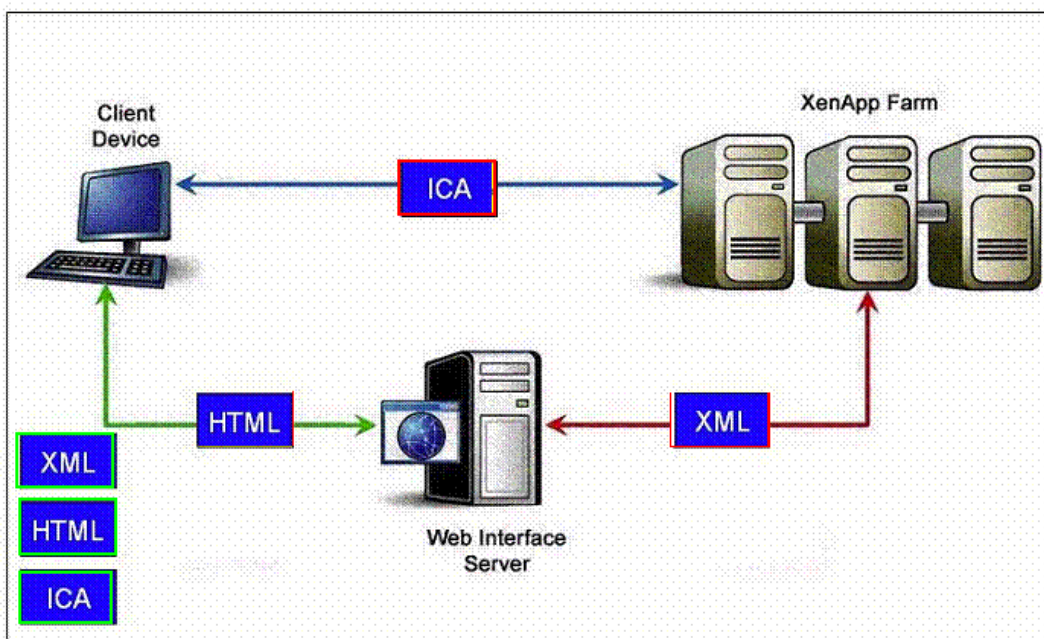
Explanation:

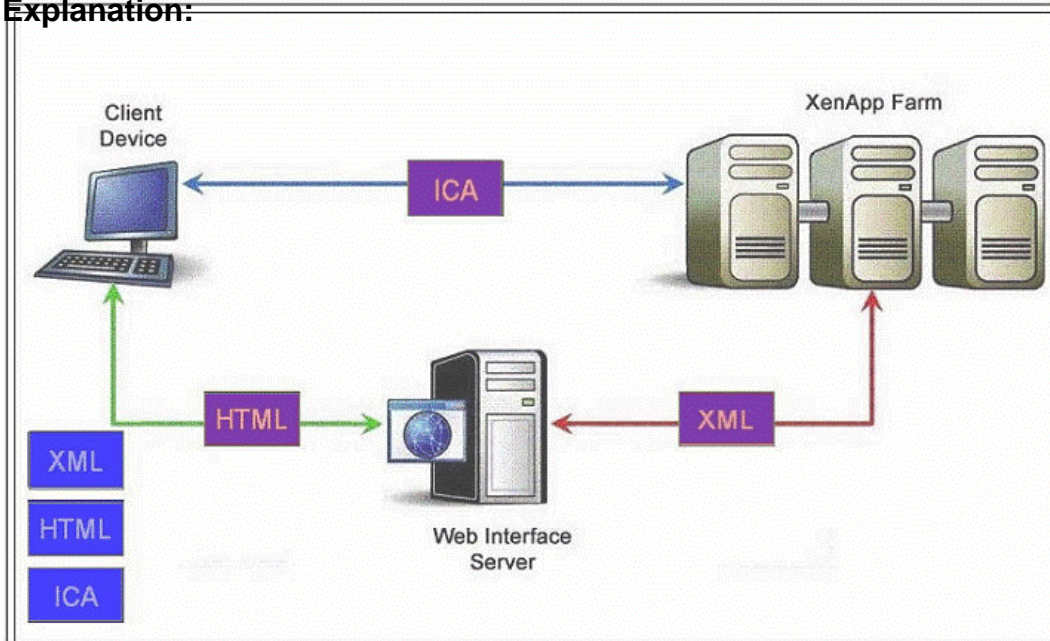
QUESTION NO: 15 DRAG DROP

Identify the traffic involved in the communication between the client, Web Interface server and Citrix XenApp in the attached diagram.



Answer:



Explanation:

The client speaks via port 80 (HTML) (or 443 if SSL is enabled) with the Web Interface Server. The Web interface Server speaks via port 80 with the XML Service (or 443 if SSL is enabled) on the XENApp servers. And the Client speaks via port 1494 (ICA) with the XenApp Servers.

QUESTION NO: 16

In order to improve the performance of multimedia streamed from a Citrix XenApp server to a client, an administrator considers enabling SpeedScreen Multimedia Acceleration. Which two of the listed outcomes could result from enabling SpeedScreen Multimedia Acceleration? (Choose two.)

- A. Reduced server CPU load
- B. Increased audio security
- C. Reduced network bandwidth consumption
- D. Encrypted server to client graphics
- E. Improved quality flash animations when streamed through a web browser

Answer: A,C

Explanation: SpeedScreen Multimedia Acceleration. Allows you to control and optimize the way XenApp servers deliver streaming audio and video to users. In addition, it reduces use of network bandwidth and server processing and memory because compressed multimedia files are intercepted and forwarded to the client to be uncompressed. (Admin Guide p. 153)

QUESTION NO: 17

An environment consists of two Citrix XenApp farms, each consisting of twelve Citrix XenApp servers. The user community consists of internal, telecommuter and three vendors that connect to the Citrix XenApp environment on a regular basis. All users are running Windows XP and Internet Explorer.

The requirements are following:

Minimal administrative configuration.

Seamless integration into the Start menu.

Application delivery for published applications available for all users.

Which step should the administrator take to meet the requirements of the scenario?

- A. Configure a XenApp Services site
- B. Configure a XenApp Web Site
- C. Install the Embedded Native Client
- D. Install the Native client

Answer: A

Explanation: A XenApp Services Site is required for XenApp Plugin to work. This is also the client that would be able to provide all of the required. (Program Neighborhood Agent Site)

QUESTION NO: 18

An administrator installed the XenApp Advanced configuration tool to administer a Citrix XenApp server remotely. The server is accessed through a WAN link and it is behind a firewall. Which TCP port should be opened on the firewall to allow the administrator to connect remotely by means of the XenApp Advanced Configuration tool?

- A. 1494
- B. 2513
- C. 2512
- D. 2598

Answer: B

Explanation: The AMC communicates with the DCOM/COM+ Service on the XENApp Servers via port 2513.

The IMA Services on the XenApp Servers communicate via port 2512 with each other.

1494 is the ICA Service