

Citrix 1Y0-A08

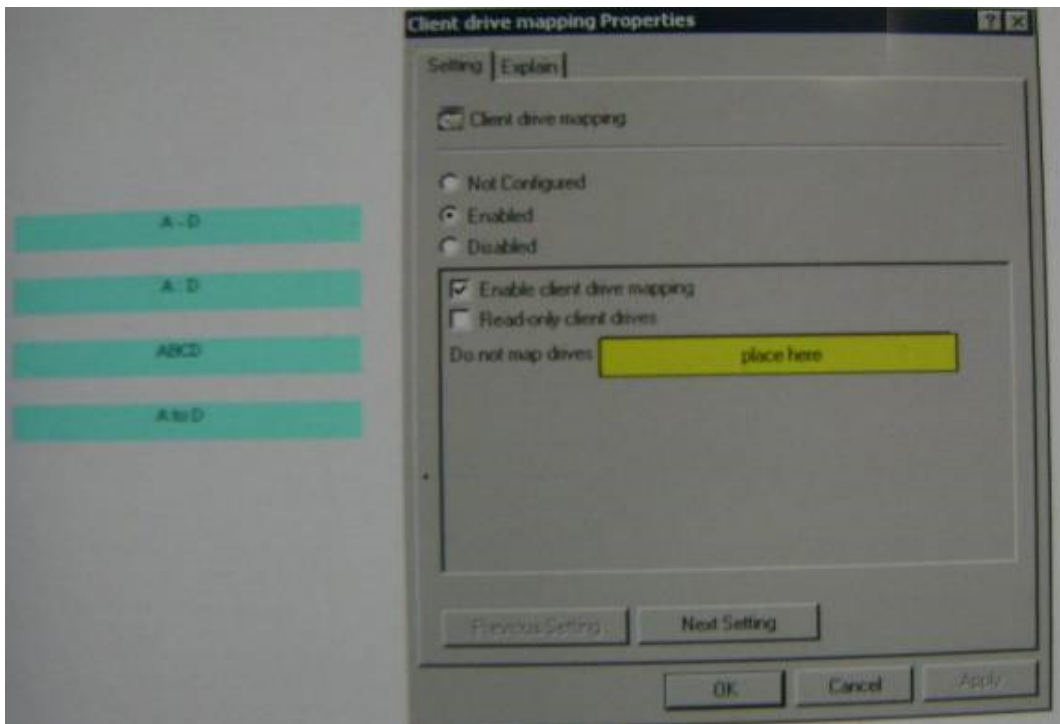
**Advanced Administration for Citrix XenApp 5.0 for
Windows Server
Practice Test
Version: 14.5**

QUESTION NO: 1 DRAG DROP

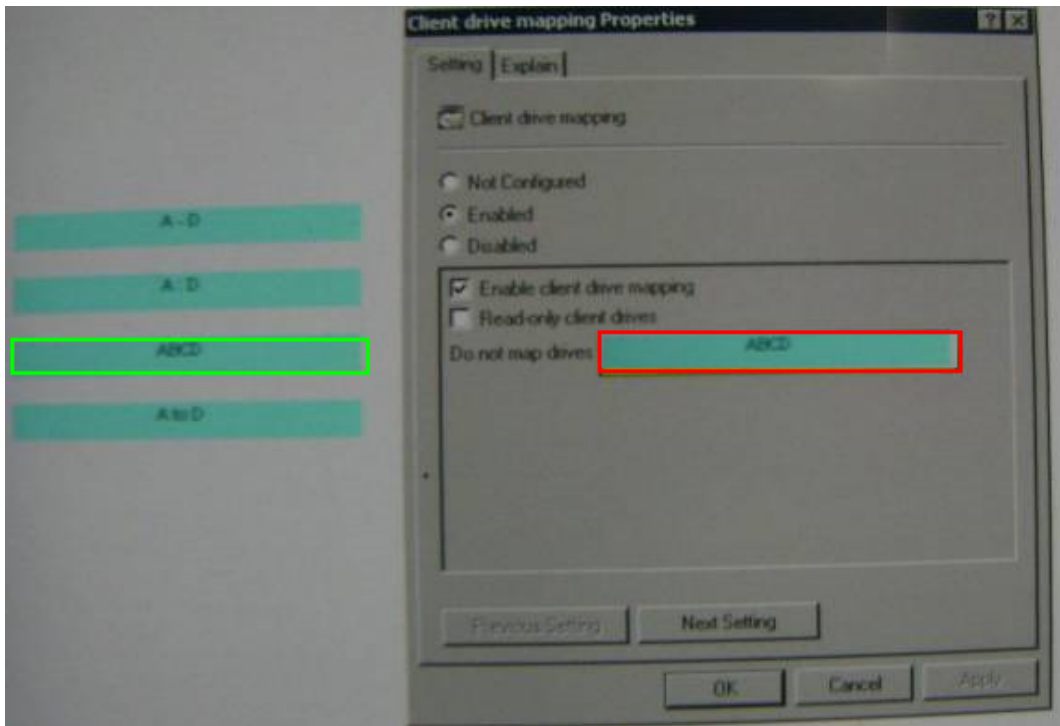
Scenario: An administrator needs to allow client drive mapping using the ICAClient ADM terminate. Drives A through D should not be mapped.

Drag the correct configuration into the dialogue box to disallow the mapping of drives A through D.

Click the Help button for instructions on how to complete a Drag and Drop item.



Answer:

**QUESTION NO: 2**

Which Citrix service directly depends on the IMA service?

- A. WMI
- B. Licensing
- C. XTE Server
- D. Print Manager

Answer: A

Explanation:

QUESTION NO: 3

Scenario: An administrator creates a new load evaluator in a Citrix XenApp farm. During routine investigation the administrator discovers that one Citrix XenApp server is hosting nearly 50% more sessions than any other Citrix XenApp server in the farm.

Which object can the administrator view to identify which load evaluators have been applied to each server?

- A. Log tab in the XenApp Advanced Configuration tool
- B. Farm Properties in the Access Management Console

- C. Server Properties in the Access Management Console
- D. Contents tab in the XenApp Advanced Configuration tool
- E. Usage reports tab in the XenApp Advanced Configuration tool

Answer: E

Explanation: Source: <http://www.virtualizationadmin.com/articles-tutorials/terminal-services/general/citrix-presentation-server-load-management-part3.html>

QUESTION NO: 4

Which two commands can an administrator use to check for disconnected ICA sessions? (Choose two.)

- A. QWINSTA
- B. QFARM /APP
- C. QFARM /DISC
- D. QFARM /LOAD
- E. QUERY LOGON

Answer: A,C

Explanation:

QFARM /DISC

Display disconnected session data

<http://techiecocktail.blogspot.com/2009/02/log-off-users-using-command-line.html>

<http://www.techtalkz.com/blog/tips-n-tricks/how-to-view-disconnect-remote-desktop-sessions-from-commandline.html>

QWINSTA displayer User STATE as Disc, Listen, Active, Conn. Disc = Disconnected

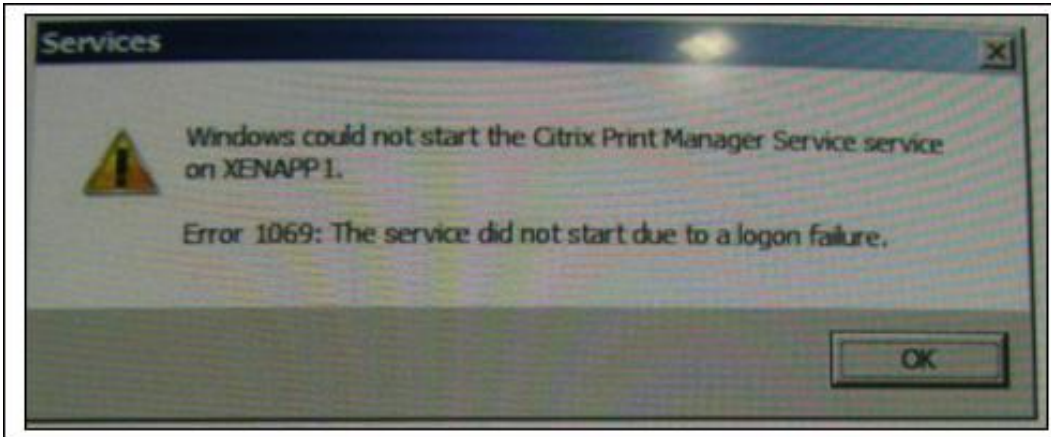
```

C:\>QWINSTA
SESSIONNAME      USERNAME          ID  STATE  TYPE    DEVICE
services         administrator     0   Disc
>console         administrator     1   Active
ica-tcp          65536             Listen
rdp-tcp          65537             Listen
  
```

QUESTION NO: 5

Scenario: Users are reporting that their printers are not auto-creating. The administrator investigates and discovers that the Citrix Print Manager Server is Not running. When attempting to start the service, the administrator receives the error shown in the attached screenshot.

Click the Exhibit button to view the error message.



Which two actions could resolve this issue? (Choose two.)

- A. Recreate the Ctx_cpsvcuser account
- B. Recreate the Network Service account
- C. Recreate the Ctx_streamingsvc account
- D. Ensure the Ctx_cpsvcuser account has logon as service rights
- E. Ensure the Network Service account has logon as service rights
- F. Ensure the Ctx_streamingsvc account has logon as service rights

Answer: A,D

Explanation: Source: <http://support.citrix.com/article/CTX106661>

Error 1069: The service did not start due to a logon failure when attempting to manually start either the Citrix

SMA Service or the Citrix Print Manager Service

<https://support.citrix.com/article/CTX106661>

Required Permissions and Rights for the Ctx_CpsvcUser Account

<http://support.citrix.com/article/ctx113555>

Note: XenApp 5.0 Ctx_SmaUser was replaced by ctx_cpsvcuser and here you have second docs

QUESTION NO: 6

An administrator must configure streamed application to work for some Windows-based users who may NOT be connected to the corporate network when working remotely.

Which two steps must the administrator perform in order to meet the needs of this environment?

(Choose two.)

- A. Configure laptop users for offline access
- B. Install the XenApp Web Plugin on each laptop
- C. Configure the application profiles for offline access
- D. Enable the published applications for offline access

Answer: A,D

Explanation:

Configuring Offline Access

No additional configuration is needed while profiling the application to create application profiles or targets that can be accessed offline.

Step 1: Configure policy settings for offline access

Step 2: Install the online and offline plug-ins on user devices

Step 3: Publish the application for offline access

<http://support.citrix.com/proddocs/index.jsp?topic=/xenapp6-w2k8-admin/ps-stream-apps-config-offline-access.html>

QUESTION NO: 7

What should an administrator do to troubleshoot an issue involving a single user who is unable to save files to his or her local desktop when other users can save files to their local desktops?

- A. Check the properties of the Citrix XenApp farm
- B. Check the permissions on the local client drive
- C. Check the properties of the published applications
- D. Check the permissions on the Citrix XenApp server drive

Answer: B

Explanation:

QUESTION NO: 8

Scenario: A Citrix XenApp farm consists of one data center that hosts several dozen of Citrix XenApp servers. An Administrator in the farm is creating a disaster recovery plan and has secured data center space in Timbuktu. After provisioning a dozen servers to that location, the

administrator begins configuring zone preference and failover so that, if necessary, all users can access applications from the disaster site.

Once properly configured, users can leverage the latest _____ when accessing the farm through a _____ (Choose the three correct options to complete the sentence.)

- A. Client for Java; XenApp Web site
- B. Client for Linux; XenApp Web site
- C. Plugin for Hosted Apps; XenApp Services site
- D. Windows CE-based client; custom ICA connection
- E. XenApp Plugin for Hosted Apps; Program Neighborhood interface

Answer: A,C,E

Explanation:

QUESTION NO: 9

Which two reasons would cause an administrator to exclude certain applications from Memory Optimization before testing them? (Choose two.)

- A. Some application components are digitally signed
- B. The applications allow Windows to load the .DLL files it calls
- C. The applications are memory-intensive when run in multiple sessions
- D. The applications use Windows Rights Management to protect its .DLL files
- E. The applications download additional components from the Internet during installation

Answer: A,D

Explanation:

QUESTION NO: 10

An administrator just installed and configured a Citrix license server using defaults; however, the administrator did NOT open the vendor daemon port on the firewall.

The administrator has to open this port on the firewall to allow for communication between the Citrix license server and the _____ (Choose the correct option to complete the sentence.)

- A. client devices
- B. Citrix XenApp servers
- C. License Management Console

D. Terminal Services licensing server

Answer: B

Explanation:

QUESTION NO: 11

Scenario: An administrator has been assigned the task of creating and testing application streaming profiles. The initial phase of the project will only involve streaming applications to the Citrix XenApp servers.

According to Citrix best practice, the profiler system should be installed on a _____ and include _____ (Choose the correct pair of options to complete the sentence.)

- A. Windows XP, a XenApp plugin for testing streamed applications
- B. Windows Vista workstation; a XenApp plugin for testing streaming applications
- C. Windows server; Standard programs that are part of the company image, such as an antivirus program
- D. Windows Vista workstation; Standard programs that are part of the company image, such as an antivirus program

Answer: C

Explanation:

QUESTION NO: 12

In which situation should the “CPU Utilization Management/CPU Rebalance” service be set to start automatically?

- A. Citrix XenApp runs on a single processor server
- B. The Resource Manager tool is used to monitor CPU sharing
- C. It is desirable to monitor CPU sharing using the Access Management Console
- D. Multiple instances of a single-threaded application are running on the same CPU

Answer: D

Explanation:

QUESTION NO: 13

Scenario: During testing, a new application crashes on Citrix XenApp servers. After investigating, the administrator identifies that the application is NOT compatible with the virtual memory management feature, which has been enabled.

How can the administrator prevent the application from being affected by the memory management feature without disabling memory management for all applications?

- A. Add the application to the SFO file
- B. Stream the application to the server.
- C. Add the application to Exclude Application list.
- D. Remove the application from the memory management list in the registry.

Answer: C

Explanation: Source: <http://support.citrix.com/article/CTX106023>

QUESTION NO: 14

Scenario: A Citrix XenApp server in a farm is heavily loaded; logon time has increased significantly. The CPU resources are dominated by a particular application. A single user running that application is affecting all the other users connected to the Citrix XenApp server.

How would the administrator resolve this issue?

- A. Assign the Advanced Load Evaluator to all servers
- B. Enable 'Fair sharing of CPU between sessions' on the entire farm
- C. Create a new load evaluator to load manage the application by CPU utilization
- D. Configure a special Health Monitoring and Recovery item to show when the CPU utilization is high

Answer: B

Explanation:

QUESTION NO: 15

Scenario: Since a recent server consolidation project which reduced the number of servers in the farm, users cannot access published applications on the Web interface site. The Citrix administrators can access the Citrix XenApp servers through remote desktop connections but cannot discover the farm from the Access Management Console.

What could be preventing the Access Management Console from discovering the farm?

- A. Citrix XenApp servers were NOT rebooted
- B. the SQL database for the XenApp data store was moved
- C. The users do NOT have the latest XenApp Plugin installed
- D. Servers that were hosting applications were removed from the farm

Answer: A

Explanation:

- B. You should still be able to access the local store: No
- C. Plugin type has not changed: No
- D. States you can access the servers via RDP

QUESTION NO: 16

With the least administrative effort, what could an administrator do to verify that the Citrix XenApp servers in an environment have the same hot fix revision?

- A. Run the CPATCH /L command and compare the hot fixes
- B. Create a hot fix list and compare the servers using the Access Management Console
- C. Use the Programs and Features option in the Windows Control Panel and compare the hot fixes
- D. Create a new hot fix list and compare the servers to the hot fix list in the XenApp Advanced Configuration tool

Answer: B

Explanation:

QUESTION NO: 17

Scenario: An administrator configured Citrix XenApp in an environment and used a SQL Server data store. The SQL server data store database has been moved to another SQL server.

Which two steps must be performed on the Citrix XenApp servers to complete the relocation of the data store? (Choose two.)

- A. Run the CHFARM command
- B. Create a new DSN file that points to the relocated database