

Oracle

Exam 1Z0-547

Sun Storage 7000 Unified Storage Systems Essentials

Version: 6.0

[Total Questions: 70]

Question No : 1

Analytics provides _____.

- A. A graphical view of iostat statistics, when can be customized to provide lower-level detail.
- B. Real-time CPU and power statistics to maximize utilization and minimize power consumption.
- C. A graphical view of Solaris kstat performance statistics, which can be customized to provide lower-level detail.
- D. Real-time graphs of various statistics, which can be saved for later viewing.

Answer: D

Explanation: Analytics provides real time graphs of various statistics, which can be saved for later viewing

Analytics is an advanced facility to graph a variety of statistics in real-time and record this data

for later viewing. It has been designed for both long term monitoring and short term analysis.

When needed, it makes use of DTrace to dynamically create custom statistics, which allows

diferent layers of the operating system stack to be analyzed in detail.

Reference:Sun ZFS Storage 7000 Analytics Guide

Question No : 2

Worksheets can be exported as part of a support bundle.

- A. True
- B. False

Answer: A

Explanation: BUI commands includes:

*send worksheet with support bundle

*upload a support bundle that includes this worksheet, allowing for off-line

analysis of your system by your support provider. You should only do this if you have

been explicitly asked to upload such a bundle by support personnel.

Question No : 3

The 7000-series system comes predefined with usernames and passwords for which two items below?

- A. Root
- B. Admin
- C. User
- D. Operator
- E. Root on the SP
- F. Admin on the SP

Answer: A,E

Explanation: The process to reset the root password on a Sun Storage 7000 appliance involves two basic steps. The first step is to clear the password for the system's Service Processor. Once the service processor password has been reset, we can use it in the second step to interrupt the system initialization process so that we can force the appliance configuration to start.

Reference:<https://wikis.oracle.com/display/FishWorks/How+To+Reset+the+Root+Password+on+the+7000+Series>

Question No : 4

Which three items are available via the Status Dashboard in the Browser User Interface (BUI)?

- A. Summary of storage pool and main memory usage
- B. Known hardware faults
- C. Status of each physical network port
- D. Status of services on the appliance

Answer: A,B,D

Explanation: The Status > Dashboard screen provides a view of storage(A), memory(A),

services(D), hardware,activity,and recent alerts.

B: Hardware

This area of the Dashboard shows an overview of hardware on the appliance.

Faults

If there is a known fault, the amber fault icon appears.

D:Services

This area of the Dashboard shows the status of services on the appliance, with a light icon to show the state of each service.

Reference:Sun ZFS Storage 7000 System Administration Guide,Dashboard

Question No : 5

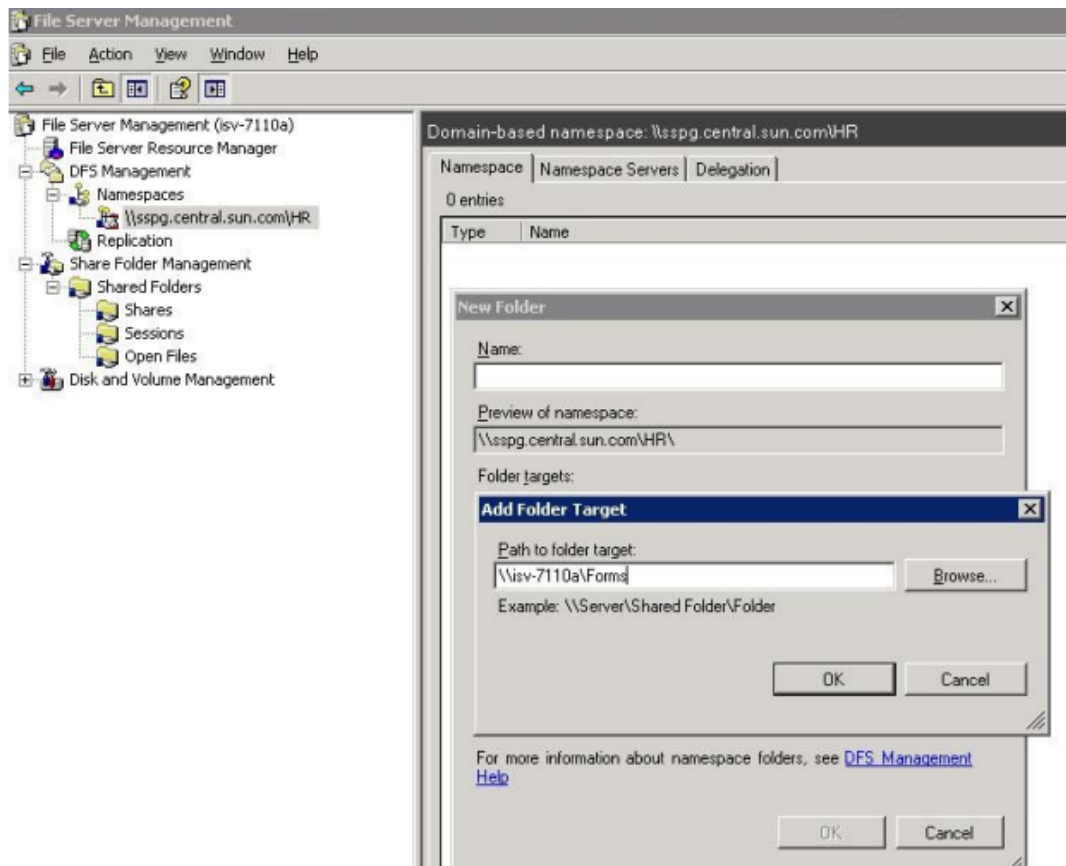
What tool can be used to set up DFS target shares coming from a 7000 series system?

- A. The File Server Management Console from a Windows 2003R2 server with the File Server Role enabled
- B. The Computer Management Console from a Windows 2003R2 server with the Domain Controller Role enabled
- C. The 7000-series system Command Line Interface
- D. The 7000-serles system Web Console

Answer: A

Explanation: The Distributed File System (DFS) solution in Windows Server 2003 R2 allows administrators to group shared folders across the network into a virtual tree of folders called a namespace. The current 7000 software release allows for an appliance CIFS share to act as a DFS target. A namespace root must already be active on an alternate object in Active Directory. CIFS shares from the 7000 may be added as targets to any DFS root.

To add a CIFS share from the 7000 as a target or DFS referral, click add folder from an existing DFS root share, in this case a domain wide share of \\sspg\HR, as shown in Illustration



Reference:Microsoft WindowsIntegration on the Sun Storage 7000, Implementation Guide,DFS Target

Question No : 6

You have issue with performance characteristics of a specific version of NFS and would like to disable this version. What is a good resolution?

- A. disabling the NFSv4 delegation
- B. setting the NFS minimum and maximum versions to the same value as another NFS version number
- C. reducing the maximum number of concurrent NFS requests allowed
- D. enabling iSNS discovery

Answer: B

Explanation: NFS properties include:

*Minimum supportedversion

Controls which versions of NFS are supported

*Maximum supported version

Controls which versions of NFS are supported

Note: NFS (Network File System) is an industry standard protocol to share files over a network. NFS versions 2, 3, and 4 are supported.

Reference: Sun ZFS Storage 7000 System Administration Guide, NFS properties

Question No : 7

Which three items allow you to restore data from a snapshot?

- A. Mount the snapshot LUN and copy the data back
- B. Clone the snapshot LUN and copy the data back
- C. Click the rollback icon of a snapshot
- D. Mount the share, change directories into the .zfs directory of the share, find the snapshot (time sequenced), and copy the data

Answer: B,C,D

Explanation: B (not A): LUN snapshots cannot be accessed directly, though they can be used as a rollback target or as the source of a clone.

Reference: Sun ZFS Storage 7000 System Administration Guide, Snapshots

Question No : 8

What are the supported methods for viewing system statistics?

- A. Analytics only
- B. Analytics and the appliance CLI
- C. Solaris stat tools: iostat(1M), vmstat(1M), and so on
- D. Analytics and Solaris stat tools: iostat(1M), vmstat(1M), and so on
- E. Top(1M)

Answer: B

Question No : 9

The Status Dashboard can be customized to show specific performance graphs. Which two of the following are valid options?

- A. CPU utilization
- B. Average number of NFSv4 operations/second
- C. Average power consumption
- D. Average wait I/O time per CPU

Answer: A,B

Explanation: For example, a performance issue may be experienced and the following high level statistics are checked first:

- *CPU utilization(A)
- *Network bytes/sec
- *NFSv4 operations/sec(B)
- *Disk operations/sec

Reference: Sun ZFS Storage 7000 System Administration Guide, DrilldownAnalysis

Note: Analytics is an advanced facility to graph a variety of statistics in real-time and record this data for later viewing. It has been designed for both long term monitoring and short term analysis.

Question No : 10

Which two properties are available when creating alerts based on statistics from Analytics?

- A. Threshold
- B. Baseline: distance from
- C. Reset: limit
- D. Timing: for at least

Answer: A,D

Explanation: Threshold Alerts

These are alerts based on the statistics from Analytics. The following are properties when creating threshold alerts:

***Threshold**

The threshold statistic is from Analytics, and is self descriptive (eg, "Protocol: NFSv4 operations per second")

***Timing: for at least**

Duration which the current statistic value must exceed/fall below the threshold

* exceeds/falls below

* only between/only during

* Repost alert every ... this condition persists.

* Also post alert when this condition clears for at least ...

Reference: Sun ZFS Storage 7000 System Administration Guide, Threshold Alerts

Question No : 11

Which three items can be answered using Analytics?

- A. Which files are being accessed from a specific client
- B. Which files are corrupt
- C. Which LUNS are being written to
- D. CPU utilization
- E. Power utilization

Answer: A,C,D

Explanation: A, C: The analytics can show:- what files are being accessed from a specific client (A)

- what LUNS are being written to (C)- what clients are making CIFS requests- what NFS files are currently being accessed- how long NFS operations are taking- what is the read/write mix for a specific file, by a specific client- how long are writes taking to a specific file at a specific offset in that file

D:For example, a performance issue may be experienced and the following high level statistics are checked first:

*Network bytes/sec

*NFSv3 operations/sec

*Disk operations/sec

*CPU utilization

Note:Analytics is an advanced facility to graph a variety of statistics in real-time and record this data for later viewing. It has been designed for both long term monitoring and short term analysis.

When needed, it makes use ofDTTrace to dynamically create custom statistics, which allows different layers of the operating system stack to be analyzed in detail.

Reference:Sun Storage 7000 Analytics Overview

<http://ctistrategy.com/2008/12/17/sun-storage-7000-analytics-overview/>

Question No : 12

The _____ on the Status Dashboard can be customized.

- A. services and statistics
- B. services and hardware
- C. services and thresholds
- D. statistics and thresholds

Answer: D

Explanation: The Status > Settings screen enables you to customize the Status Dashboard, including the statistics that appear and thresholds that indicate activity through the weather icons.

*Use the Thresholds screen to configure the dashboard activity weather icons. The defaults provided are based on heavy workloads, and may not be suitable for your environment.

Reference: Sun ZFS Storage 7000 System Administration Guide

Question No : 13

What is the default block size for LUNs, and where is it changed?