

**Oracle 1z0-242**

**1Z0-242 PeopleSoft Application Developer II :App  
Engine & Integration  
Practice Test  
Version 1.1**

**QUESTION NO: 1**

You created a component interface with the standard methods of Create, Find, Get, Cancel, and Save. You secured the component interface and provided full access to all the methods. You want to test the GET method to access the online information. Which three steps will you use to test the GET method? (Choose three.)

- A. Open the component interface in Application Designer.
- B. Right-click in the component interface view and select Test Component Interface.
- C. Save the data by selecting File, Save.
- D. Use the Find option to test the GET method after supplying key values.
- E. Use the Get Existing option to test the GET method after supplying key values.
- F. Enter data in the Component Interface Tester tool.
- G. Validate that the data has been modified and saved by accessing the online component or using the database query tool.

**Answer: A,B,E**

**QUESTION NO: 2**

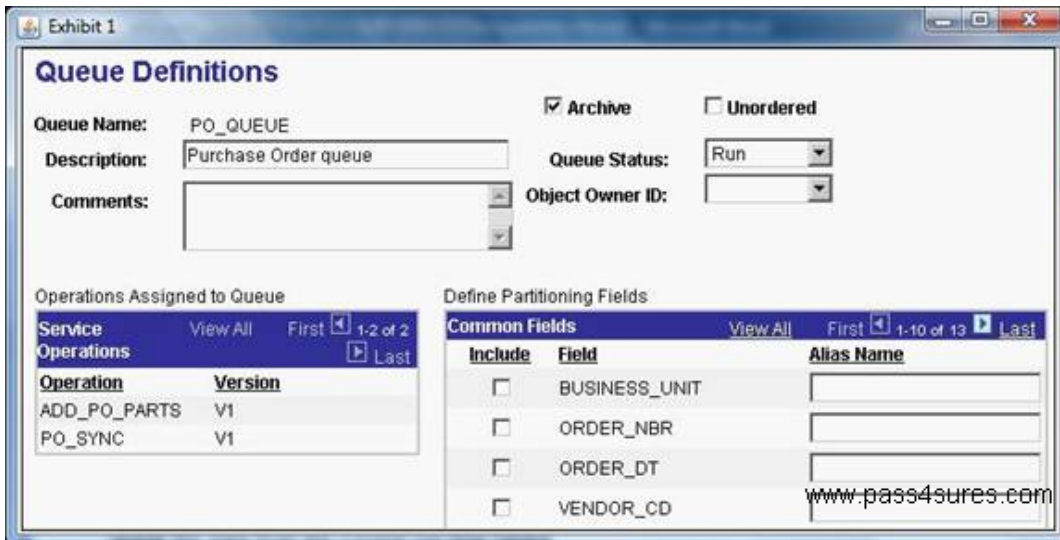
An Application Engine program uses a Do Select action. What occurs when the Select statement is executed?

- A. Each row returned by the Select statement is stored in the state record. The Select statement continues until no more rows are returned. Then, the control passes to the calling section.
- B. All rows returned by the Select statement are stored in a cursor. Then, the control is passed to the calling section.
- C. All rows returned by the Select statement are stored in the state record. Then, the control is passed to the next section in the program.
- D. All rows returned by the Select statement are stored in a cursor. The first row is stored in the state record. Then, the remaining actions in the step are processed sequentially. Thereafter, the control returns to the Do Select to fetch another row, until no more rows are returned.
- E. When a row is returned, the remaining steps in the section execute and control returns to the calling step.
- F. When a row is returned, it is stored in the state record. Then, the control is passed to the calling section.

**Answer: D**

**QUESTION NO: 3**

View the Exhibit that shows the definition for the PO\_QUEUE queue



**Queue Definitions**

Queue Name: PO\_QUEUE  Archive  Unordered

Description: Purchase Order queue Queue Status: Run

Comments: Object Owner ID:

Operations Assigned to Queue

Operation	Version
ADD_PO_PARTS	V1
PO_SYNC	V1

Define Partitioning Fields

Include	Field	Alias Name
<input type="checkbox"/>	BUSINESS_UNIT	
<input type="checkbox"/>	ORDER_NBR	
<input type="checkbox"/>	ORDER_DT	
<input type="checkbox"/>	VENDOR_CD	

www.pass4sures.com

Which three statements describe how this queue will function? (Choose three.)

- A. Messages will be processed in parallel.
- B. All messages will be processed sequentially in the order in which they are sent.
- C. If an error occurs on a message, all subsequent messages will remain in a status of New.
- D. If an error occurs on a message, all messages except those with the same high-level key will continue to process.
- E. When the PeopleSoft Integration Broker archive process is run, the system will delete message transaction data from the current run-time tables.
- F. When the PeopleSoft Integration Broker archive process is run, the system will write message transaction data to the archive tables and delete the data from the current run-time tables.

**Answer: B,C,F**

#### QUESTION NO: 4

Which two tasks do you need to complete after consuming a Web service? (Choose two.)

- A. Add a point-to-point routing.
- B. Add the appropriateOnRequest handler.
- C. Secure the service operation with a permission list.
- D. Write thePeopleCode to invoke the service operation.
- E. Update the connection properties on the service operation.

**Answer: C,D**

#### QUESTION NO: 5

Which IntBroker class method do you use to send a synchronous request?

- A. Publish
- B. InboundPublish
- C. SyncRequest
- D. GetSyncInfoData
- E. ConnectorRequest

**Answer: C**

#### QUESTION NO: 6

When you service-enable a component interface, the response message shape for the Get method contains \_\_\_\_\_.

- A. Get keys
- B. Find keys
- C. Object key
- D. CI buffer structure
- E. Find key collection

**Answer: D**

#### QUESTION NO: 7

WHERE a.ITEM\_CD = b.ITEM\_CD

You copy and paste the SQL statement to a Do Select action, but it needs to be modified so that it populates the PSU\_ORDERS\_AET state record.

What do you need to do?

- A. Change line 1 to:  
%SELECT a.ORDER\_LINE\_NBR
- B. Add this line before line 1:  
INSERT INTO PS\_PSU\_ORDERS\_AET
- C. Add this line before line 1:  
%SELECT (ORDER\_LINE\_NBR, ITEM\_CD, QTY\_ORDERED, QTY\_ON\_HAND)
- D. Add this line before line 1:  
%UPDATE (ORDER\_LINE\_NBR, ITEM\_CD, QTY\_ORDERED, QTY\_ON\_HAND)
- E. Add this line after line 7:  
%INSERT (ORDER\_LINE\_NBR, ITEM\_CD, QTY\_ORDERED, QTY\_ON\_HAND)

Answer: C

### QUESTION NO: 8

You have been asked to import a CSV file. You create the file layout definition for the record structure and enter your default file name on the Preview tab. When you preview the file, only the first column of the preview grid is populated. What will you do to correct this problem?

- A. change the file layout format to match the input file
- B. specify file record IDs that match the input file records
- C. increase the field length to accommodate the input data
- D. change the definition delimiter to match the one that is used in the input file
- E. decrease the start position and adjust the field length to match the input data start position and length

Answer: D

### QUESTION NO: 9

View the Exhibit, that shows the Run Archive page that you use to archive transactional service operation data in the messaging system. Based on the run control in the exhibit, what data will the system archive when you run the process?



- A. All synchronous service operations in the messaging system with a status of Done
- B. All asynchronous service operations in the messaging system with a status of Done or Cancel
- C. All synchronous and asynchronous service operations in the messaging system with a status of Error

- D. Only asynchronous and synchronous service operations in the messaging system with a status of Done or Cancel
- E. All asynchronous service operations in the messaging system with a status of Done or Cancel. In addition, the system will delete all synchronous service operations.

**Answer: E**

#### QUESTION NO: 10

How do you configure Process Scheduler to initiate an Application Engine trace for SQL and Step?

- A. Add %%TRACE%% %%SQL%% %%STEP%% to the parameter list for the Process Type.
- B. On the Run Control page, select the SQL Trace and Step Trace check boxes.
- C. On the Process Monitor page, select the SQL Trace and Step Trace check boxes.
- D. On the Process Definition Override Options page, for Parameter List, select Append and enter - TRACE 3.
- E. On the Process Definition Override Options page, for Parameter List, select Append and enter - TRACE SQL STEP.
- F. On the Process Definition Override Options page, for Parameter List, select Append and enter %%TRACE%% %%SQL%% %%STEP%%.

**Answer: D**

#### QUESTION NO: 11

An inbound request to a PeopleSoft application is received by the appropriate listening connector in the Integration Gateway. Which connector is the request passed to?

- A. HTTP target connector
- B. PeopleSoft target connector
- C. PeopleSoft listening connector
- D. PeopleSoft service listening connector

**Answer: B**

#### QUESTION NO: 12

View the Exhibit that shows the message tree structure for the STUDENT\_INFO message. Based on this structure, which two statements describe the message? (Choose two.)



- A. This is arowset-based message.
- B. Student is an alias for the record.
- C. This is a non-rowset-based message.
- D. The alias for this message is Student.
- E. The description for the STUDENT\_ID field isID.
- F. The EMPHASIS field is included in the message.

**Answer: A,B**

### QUESTION NO: 13

Select three characteristics of the Default User ID field that you define for a node. (Choose three.)

- A. It is required for all nodes.
- B. It is used for inbound service operations.
- C. It is used for outbound service operations.
- D. You specify a value for the field only when you set the authentication option toNone.
- E. It is used when a third party invokes a service operation without an authentication user ID and password.

**Answer: A,B,E**

### QUESTION NO: 14

Following the PeopleCode action, add a Call Section action.

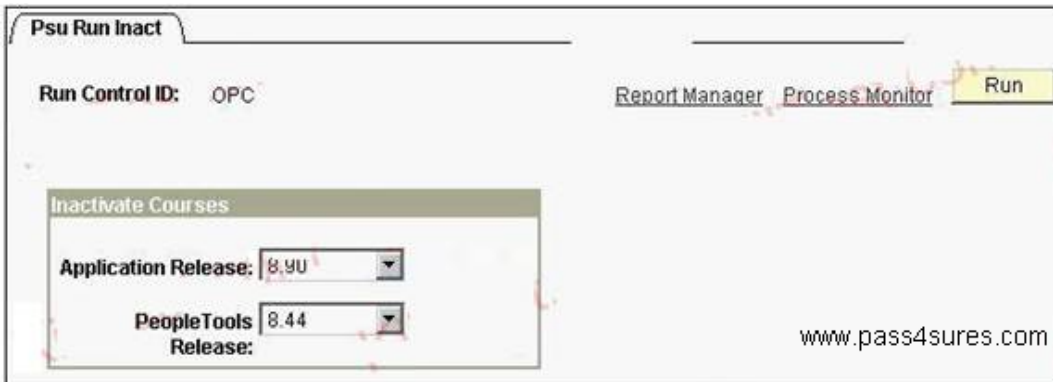
Select the correct statement.

- A. The Application Engine program will execute as expected.
- B. Step 2 is not needed for dynamic call.
- C. Step 3 is not needed.
- D. Add a step after step 5 to insert a SQL action that will use the values in the state record to populate the Program and Section fields of the Application Engine Call Section action.
- E. Add a step after step 5 to select the Dynamic Call check box in the Call Section action.
- F. Step 4 is wrong. ThePeopleCode program should use the ASection class to issue the dynamic call.

**Answer: E**

### QUESTION NO: 15

View the Exhibit.



This run control page executes an Application Engine program that updates the Course table using the parameters entered by a user.

In addition to the run control page, which three elements must be in place? (Choose three.)

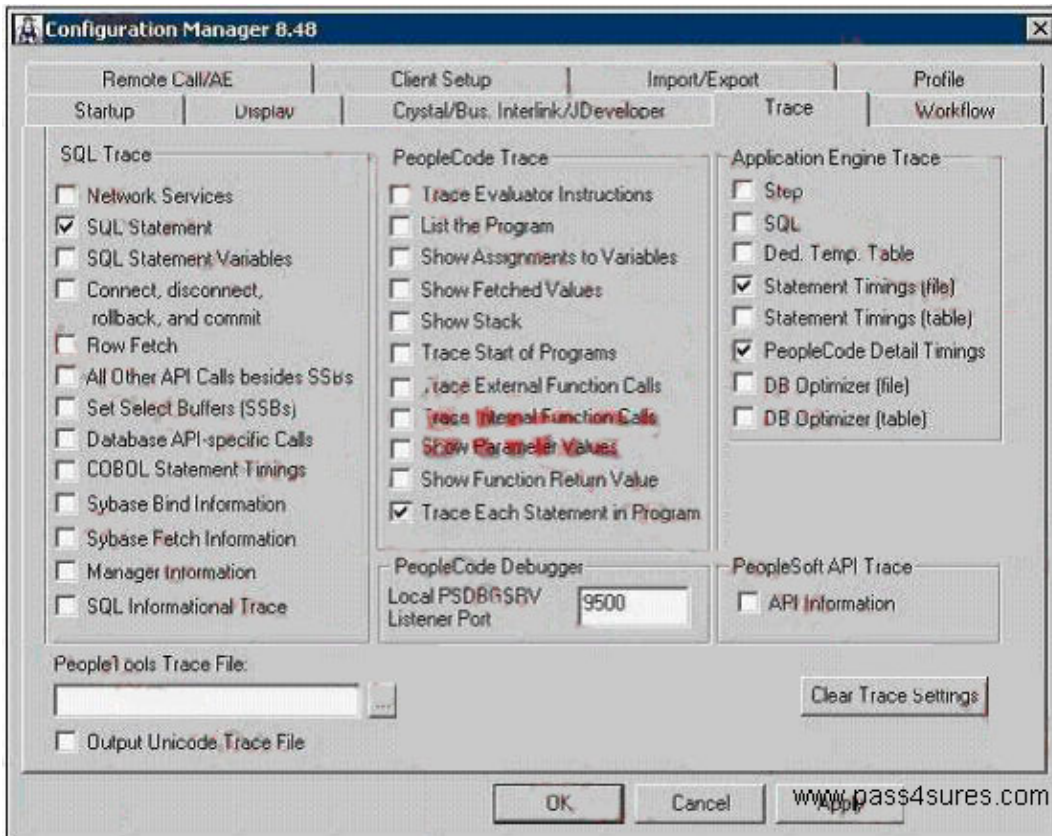
- A. A state record with fields to hold input parameters
- B. Component variables to pass the input parameters
- C. A data buffer object to retrieve the input parameters
- D. Application Engine SQL to retrieve the input parameters
- E. APeopleCode record object to update the Course table
- F. A Process Instance table to store run control parameters
- G. A run control record with fields to store the input parameters

**Answer: A,D,G**

### QUESTION NO: 16

View the Exhibit.





You run an Application Engine program through Process Scheduler with Trace configured as shown in the exhibit.

What will the trace show? (Choose all that apply.)

- A. SQL statements
- B. Statement Timings
- C. PeopleCode Detail Timings
- D. Trace Each Statement in Program
- E. Nothing. The program has to be run in two-tier mode.
- F. Nothing. A PeopleTools Trace File must be specified.

**Answer: E**

#### QUESTION NO: 17

Your customer asks you to evaluate an Application Engine program that she thinks is taking too long. You suggest that set processing may improve the Application Engine program performance. Select three reasons why you think set processing will help. (Choose three.)

- A. Set processing reduces network traffic by making fewer server trips.
- B. Set processing uses load balancing to distribute processing across multiple servers.
- C. Set processing reuses SQL statements where possible, which reduces overhead significantly.

- D. Set processing uses stored procedures, which are more efficient than Application Engine SQL
- E. Set processing transfers much of the processing work from Application Engine to the RDBMS, where there is less processing overhead.
- F. Set processing selects only the rows that will be processed, rather than using conditional constructs to determine which rows to process.

**Answer: A,E,F**

#### QUESTION NO: 18

Which type of message is most often used for PeopleSoft-to-PeopleSoft integrations?

- A. Rowset-based message
- B. Rowset-based message parts
- C. Non-rowset-based message
- D. Non-rowset-based message parts

**Answer: A**

#### QUESTION NO: 19

You have been asked to create an application class to consume the asynchronous service operation ADD\_COURSE. The requirements state that you should execute all the standard edits for COURSE\_TBL and throw an exception if an error occurs.

Complete the second line in this code:

```
If &msg.IsEditError Then
```

\_\_\_\_\_

```
Exit (1);
```

- A. %IntBroker.SetStatus(&msg,%Operation\_New)
- B. %IntBroker.SetStatus(&msg,%Operation\_Canceled)
- C. %IntBroker.SetStatus(&msg,%Operation\_Error)
- D. &MyErrors = %IntBroker.GetMessageErrors(&TransactionId);

**Answer: C**