

Oracle 1z0-311

**Oracle 1z0-311 Oracle Application Server 10g:
Administration I
Practice Test
Version 1.1**

QUESTION NO: 1

Using Oracle Internet Directory (OID) Self Service Console you have created a new group, PRODGRP1, with no users in this group as members. While assigning privileges to this group, you get the error shown in the Exhibit.

View the Exhibit.

Which task would you accomplish to overcome this error message?



- A. grant full Delegated Administration Services (DAS) privilege to the group by assigning the Privilege Group role
- B. add orcladmin user to PRODGRP1 as a member
- C. select "Make this group privileged" option by editing the group
- D. modify Group Visibility to Private for the group

Answer: C

QUESTION NO: 2

View the Exhibit and examine the Basic Content Invalidation window, which is used for invalidation, in OracleAS Web Cache Manager.

As an Oracle Application Server administrator, what would you do to invalidate objects according to information provided in Basic Content Invalidation?

Oracle Application Server
Web Cache
[Home](#) [Content Frame](#)

Web Cache running with current configuration.

Operations

- [Cache Operations](#)
- [Basic Content Invalidation](#)
- [Advanced Content Invalidation](#)
- [On-Demand Log File Rollover](#)

Monitoring

- [Web Cache Statistics](#)
- [Health Monitor](#)
- [Origin Server Statistics](#)
- [Popular Requests](#)
- [End-User Performance Analysis](#)

Properties

- [Security](#)
- [Process Identity](#)
- [Auto-Restart](#)
- [Network Timeouts](#)
- [Resource Limits](#)
- [Clustering](#)

Logging and Diagnostics

Basic Content Invalidation

Use this page to remove objects from the cache based on a URL.

For Cache:

Search Criteria

Remove all cached documents

Enter exact URL for removal:

Action

Preview list of documents that match invalidation criteria

Document Range: From To

Remove immediately

Remove documents no later than: after submission

www.pass4sures.com

- A. click Submit and restart HTTP Server
- B. click Submit and apply the changes
- C. click Submit and restart the Web Cache
- D. click Submit; the changes take effect

Answer: D

QUESTION NO: 3

You executed the following Distributed Configuration Management (DCM) command while managing the instance configuration:

```
[oracle@EDTDR5P1 bin]$ dcmctl resyncinstance -i instone
```

What would the command achieve?

- A. It overwrites DCM repository with changes in the files system configuration.
- B. It rolls back any changes made to instone instance.
- C. It resynchronizes the DCM repository by refreshing the configuration information in it.
- D. It resynchronizes the instone instance with the contents of the DCM repository.

Answer: D

QUESTION NO: 4

Using Delegated Administration Services (DAS), which task can you accomplish?

- A. manage OracleAS Single Sign-On server
- B. manage user and group entries in Oracle Internet Directory (OID)
- C. register applications that are created using OracleAS Portal
- D. monitor system components in an Oracle Application Server 10g installation
- E. manage Oracle Internet Directory processes

Answer: B

QUESTION NO: 5

You disabled the OC4J instance component, OC4J_DEMOS, by using Application Server Control Console. Which two statements are true regarding the OC4J_DEMOS component? (Choose two.)

- A. The component would not be started when the associated Oracle Application Server instance is started.
- B. All the applications deployed to the OC4J_DEMOS OC4J instance would be unavailable.
- C. The component can be automatically started and enabled by executing the `opmnctl startproc process-type=OC4J_DEMOS` command.
- D. Entries in the associated application.xml file would be modified.

Answer: A,B

QUESTION NO: 6

You want to install Oracle Application Server 10g middle tier that enables you to generate Web-based reports and authenticate users accessing the middle-tier components. Which components must you have installed before you start installing OracleAS Portal and Wireless? (Choose all that apply.)

- A. OracleAS Developer Kits
- B. Identity Management
- C. J2EE and Web Cache
- D. OracleAS Metadata Repository

Answer: B,D

QUESTION NO: 7

You are maintaining user information in the Oracle Internet Directory (OID) for authentication. You want to find out whether a user, STEVE, has the last name BENNETT. Which OID utility would you use?

- A. Idapmoddn
- B. Idapbind
- C. Idapcompare
- D. Idifwrite

Answer: C

QUESTION NO: 8

You are working for a company as an Oracle Application Server administrator. You are responsible for the performance of the company's Web site and you use Health Monitor of OracleAS Web Cache Manager in your routine performance analysis. You find that Average Latency is very high. On further investigation you find that the problem is not due to the origin server port. What could be the reason for the high Average Latency?

- A. Manual invalidation of documents has not been performed since the Web Cache was started.
- B. Compression was enabled for documents that do not need it.
- C. The age of documents in the cache is high.
- D. Compression was enabled for large text documents.

Answer: B

QUESTION NO: 9

As an Oracle Application Server administrator, you plan to install OracleAS Infrastructure. Before starting the installation, you created a staticports.ini file containing component names and port numbers. You specified the full path to the staticports.ini file on the runInstaller command line. What could be the reason to create the staticports.ini file and use it in the installation?

- A. You want to use this file instead of portlist.ini file.
- B. You want to run the installer in silent mode.
- C. You want to unassign these port numbers for the components that are currently running on these ports.
- D. You want to assign nondefault port numbers to the components during the installation.
- E. You want to run the installer remotely.

Answer: D

QUESTION NO: 10

The options describe the request flow patterns from the client to the server through the Oracle Application Server components.

- A. Browser > HTTP Server > Web Cache > OC4J Engine > database
- B. Browser > Web Cache > HTTP Server > OC4J Engine > database
- C. Browser > HTTP Server > OC4J Engine > Web Cache > database
- D. Client > Forms runtime process > Forms listener servlet > HTTP Server > database
- E. Wireless client > OracleAS Portal > OracleAS Wireless > WAP gateway

Which options show the normal request flow?

- F. B only
- G. A only
- H. both D and E
- I. C only
- J. D only
- K. both A and D
- L. E only

Answer: A

QUESTION NO: 11

As an Oracle Application Server administrator, for what purposes would you choose the Identity Management installation option while installing OracleAS Infrastructure? (Choose all that apply.)

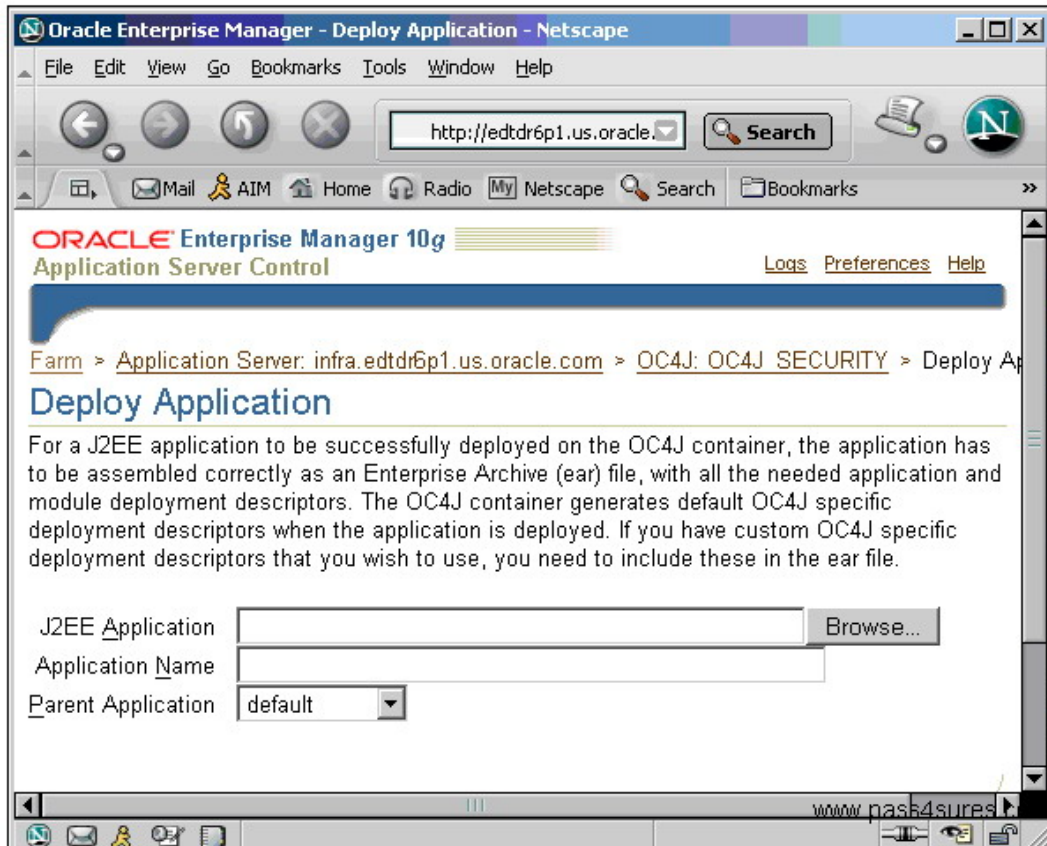
- A. to configure Oracle Internet Directory against a remote OracleAS Metadata Repository
- B. to create a new database and populate it with OracleAS Metadata Repository
- C. to install and use additional OracleAS Metadata Repository with existing Identity Management components
- D. to install additional OracleAS Single Sign-On and Oracle Delegated Administration Services components against an existing Oracle Internet Directory

Answer: A,D

QUESTION NO: 12

You are deploying a Java 2, Enterprise Edition (J2EE) application using Application Server Control Console. View the Exhibit and examine the fields for which you provide the information.

What is the significance of selecting a Parent Application?



- A. to identify the instance in which the application is to be deployed
- B. to share services, such as EJBs among multiple applications
- C. to maintain uniformity in the URLs of all the J2EE applications deployed so far
- D. to allow all the users of the parent application to access the application you are deploying

Answer: B

QUESTION NO: 13

You are maintaining user information in the Oracle Internet Directory (OID) for authentication. You want to find out whether a user, STEVE, has the last name BENNETT. Which OID utility would you use?

- A. Idapmoddn
- B. Idifwrite
- C. Idapbind
- D. Idapcompare

Answer: D

QUESTION NO: 14

You are an Oracle Application Server administrator. You want to delegate the administration of users in Oracle Internet Directory to Mark. To which three groups should Mark be added? (Choose three.)

- A. UDDI Replicators
- B. Edit Group
- C. Delete Group
- D. Delete User
- E. Create User
- F. Edit User
- G. Create Group

Answer: D,E,F

QUESTION NO: 15

In your existing Oracle Application Server 10g installation, you observe that the Oracle HTTP Server (OHS) error log file, `error_log`, is available in the location set in the `ServerRoot` directive. Because the location set in the `ServerRoot` directive is running out of space, you want to place the `error_log` file in a different location. Which directive would you use to place the file in another location?

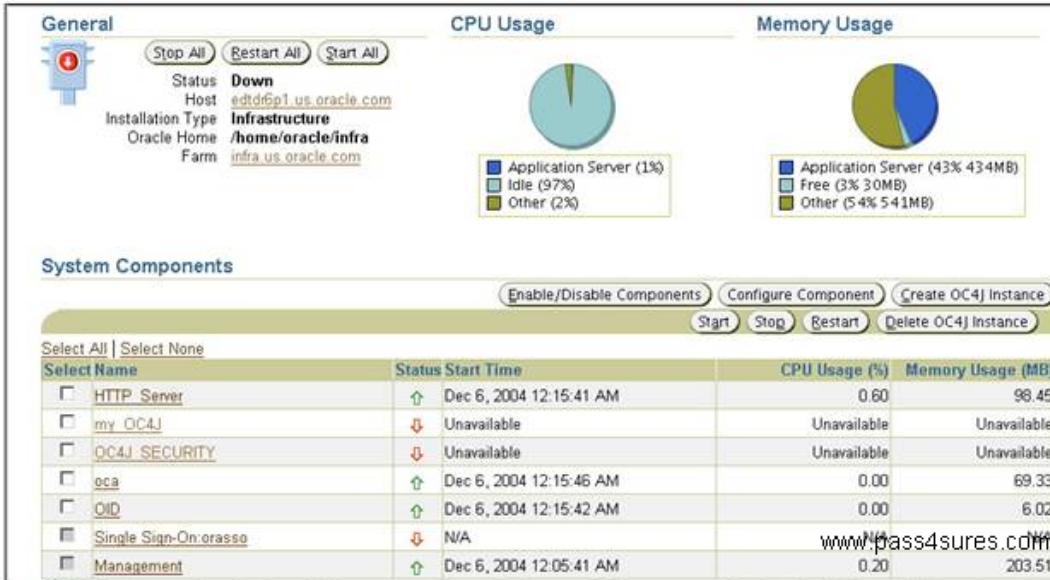
- A. `CoreDumpDirectory`
- B. `ErrorLog`
- C. `PidFile`
- D. `TransferLog`
- E. `AccessLog`

Answer: B

QUESTION NO: 16

View the Exhibit and examine the system components.

What would happen if you want to start all the processes and you click the Start All button?



General **CPU Usage** **Memory Usage**

Stop All Restart All Start All

Status: **Down**
 Host: [edtdr5p1.us.oracle.com](#)
 Installation Type: **Infrastructure**
 Oracle Home: [/home/oracle/infra](#)
 Farm: [infra.us.oracle.com](#)

System Components

Enable/Disable Components Configure Component Create OC4J Instance

Start Stop Restart Delete OC4J Instance

Select Name	Status	Start Time	CPU Usage (%)	Memory Usage (MB)
<input type="checkbox"/> HTTP_Server	↑	Dec 6, 2004 12:15:41 AM	0.60	96.45
<input type="checkbox"/> my_OC4J	↓	Unavailable	Unavailable	Unavailable
<input type="checkbox"/> OC4J_SECURITY	↓	Unavailable	Unavailable	Unavailable
<input type="checkbox"/> oca	↑	Dec 6, 2004 12:15:46 AM	0.00	69.33
<input type="checkbox"/> OID	↑	Dec 6, 2004 12:15:42 AM	0.00	6.02
<input type="checkbox"/> Single Sign-On:orasso	↓	N/A	N/A	N/A
<input type="checkbox"/> Management	↑	Dec 6, 2004 12:05:41 AM	0.20	203.51

- A. All the processes that are started are indicated by filled check boxes.
- B. All the processes are stopped and started together.
- C. Only the processes that are stopped will be started.
- D. This will not work because some processes are already started.

Answer: C

QUESTION NO: 17

You execute the following command in your Oracle Application Server 10g installation to start the Oracle Internet Directory (OID) Server Instance with a new instance ID:

```
$ oidctl connect=infra server=oidldapd instance=1 host=edtdr5p1.us.oracle.com start
```

The command does not error out. But while trying to locate the server instance using the Process Status (ps) operating system utility, you realize that the instance has not started.

What could be the reason?

- A. The Oracle Internet Directory (OID) Monitor process has not started.
- B. The OID Listener process has not started.
- C. The OID server processes have not started.
- D. The Oracle HTTP Server process has not started.
- E. The Oracle Enterprise Manager 10g Application Server Control page has not started.

Answer: A

QUESTION NO: 18

You have not set the Subscriber Search Base node in Directory Information Tree (DIT) in Identity Management Realm by using the orclSubscriberSearchBase attribute. You use Discovery mechanism to find out user information in the DIT. Which statement is true in this scenario?

- A. This attribute cannot have null values.
- B. This attribute would have the same value as User Search Base.
- C. This attribute value points to the parent of Default Subscriber.
- D. This attribute would have the same value as Default Subscriber.
- E. This attribute would have the same value as Subscriber Nickname.

Answer: C

QUESTION NO: 19

You created a user for OracleAS Portal instance by using the Portal User Profile portlet. Which database schema would the user map to by default?

- A. PORTAL_PUBLIC
- B. PORTAL_DEMO
- C. AURORA\$ORB\$UNAUTHENTICATED
- D. PORTAL_APP
- E. PORTAL

Answer: A

QUESTION NO: 20

To create a data source, you performed the following steps:

1. Opened the Application Server Control Console and clicked the bi.edtdr6p1.us.oracle.com link (instance in the farm)
2. Opened the OC4J Home page and clicked the Administration tab in the page
3. In the Application Defaults section, used the Data Sources page to create the data source

Which statement regarding the data source is true?

- A. This data source is local to a particular application.
- B. This is a global data source and can be used by all applications deployed in this OC4J instance.
- C. This is a global data source and can be used by all applications deployed in all Oracle Application Server Containers for J2EE (OC4J) instances.
- D. This data source cannot be used for the new applications that you deploy in future.