

Oracle

Exam 1z0-478

Oracle SOA Suite 11g Certified Implementation Specialist

Version: 7.4

[Total Questions: 75]

Question No : 1

Identify the statement that describes an ESB.

- A. An ESB provides a mediation layer between services and consumers.
- B. An ESB facilitates a point-to-point approach to application integration.
- C. An ESB is an execution engine providing Java EE capabilities.
- D. An ESB makes service provider addresses visible to service consumers.

Answer: A

Explanation: * An enterprise service bus (ESB) is a software architecture model used for designing and implementing the interaction and communication between mutually interacting software applications in service-oriented architecture (SOA). As a software architecture model for distributed computing it is a specialty variant of the more general client server software architecture model and promotes agility and flexibility with regards to communication and interaction between applications. Its primary use is in enterprise application integration (EAI) of heterogeneous and complex landscapes.

* An enterprise service bus (ESB) is a software architecture for middleware that provides fundamental services for more complex architectures. For example, an ESB incorporates the features required to implement a service-oriented architecture (SOA). In a general sense, an ESB can be thought of as a mechanism that manages access to applications and services (especially legacy versions) to present a single, simple, and consistent interface to end-users via Web- or forms-based client-side front ends.

Question No : 2

You want to monitor a specific BPEL process variable in your process. You have all the capability Oracle SOA Suite at your disposal.

Which approach do you take if you want the variable data written to a JMS queue to be processed by another application?

- A. Identify the variable as a key performance Indicator (KPI) and track it in BAM.
- B. Use a composite sensor on the appropriate service or reference binding.
- C. Use a BPEL Process Manager sensor to collect the value and context.
- D. Use Oracle Event Processing (OEP) to monitor the activities being executed in the BPI I process.

Answer: C

Question No : 3


Which two approaches are valid when using dynamic partner links in a BPEL process?

- A. A WSDL file, which contains multiple services that use the same portType, is available at design time, but the decision to determine which service is used can only be made at runtime.
- B. When the BPEL process is designed, the endpoint URL of the WSDL file is known but the services and port types are not known.
- C. When the BPEL process is designed, the services and port types of the WSDL file are known but the endpoint URI is not known.
- D. A WSDL file, which contains multiple services that use different portTypes, is available at design time, but the decision to determine which server us used can only be made at runtime.

Answer: A,C

Explanation: A (not D): How To Create a Dynamic Partner Link at Design Time for Use at Runtime

To create a dynamic partner link at design time for use at runtime:

 Create a WSDL file that contains multiple services that use the same portType.
etc

C (not B): The BPEL specification mandates that only the partner endpoint reference (EPR) can be changed dynamically. In BPEL terms, only the partnerRole of a partner link element can have a new value assigned. The myRole value doesn't change after the BPEL has been deployed.

Note:

* Dynamic Partner Links and Dynamic Addressing

During the design-time of an application, you may need to configure certain services whose endpoints (addresses) are not known beforehand, or it may be necessary to change an endpoint reference while the application is running. The Dynamic Partner link feature allows you to dynamically assign an endpoint reference to the partner link. This means that you can use one partner link for subsequent calls to different web-services (provided that the services use the same interface).

* For successful deployment of the process, a partner link should be completely defined. When you deploy the project, the WSDL file for the partner link should contain and define both the abstract and the concrete information for the partner link, including address and port, though later the concrete information can be changed independently from the WSDL

file.

Question No : 4

Suppose that you pass some data from a process variable as a parameter into a human task. The variable is then updated at a later time in a parallel stream of execution in the BPEL process while the human task still executing (that is, before is auctioned by the assignee)

What does the assignee see after opening the task in the workspace and looking at the parameter?

- A. The parameter contains the values of the process variable as it was when the task was created.
- B. The parameter contains the values of the process variable as it is at the current time (that is, when the user opened the human task in the workspace).
- C. The parameter is empty, and the task must be restarted to pick up the new values of the processes variable.
- D. It is not possible to determine from the information.

Answer: A

Explanation:

Note: The BPEL process specification does not provide a mechanism to ensure the thread safety of BPEL variables (that is, a lack of a synchronized qualifier such as in Java), which is necessary for true multithreaded programming.

Question No : 5

You want to define a now event to be managed by the Event Delivery Network (EDN). The XSD is in place that defines the element that is to be the basis of the new event.

Which step do you perform next?

- A. Create a new event definition in the SOA Composite Editor.

- B. Use an editor to create the event using Event Definition Language (EDL) syntax.
- C. Create the now event definition as you configure the invoke activity that publishes the event in your BPEL process.
- D. Use Enterprise Manager to register the new event to EDN.

Answer: A

Question No : 6

Which two features are provided by decision tables?

- A. Sets of input data can be bucketed and reviewed for gaps.
- B. Data sets can be reviewed for conflicts.
- C. Data can be used for only one rule evaluation.
- D. A rule evaluation can be used only to enter new output data.

Answer: A,B

Explanation: After you create a Decision Table there are operations that you may want to perform on the Decision Table, including the following:

- (A) Find and fix gaps in a Decision Table
 - (B) Finding and resolving conflicts between rules in a Decision Table
- Compact or split cells in a Decision Table
Merge a condition or split a condition in a Decision Table

A: * Compact the Decision Table

In this step you compact the rules to merge from eighteen rules to nine rules. This automatically eliminates the rules that are not needed and preserves the no gap, no conflict properties for the Decision Table.

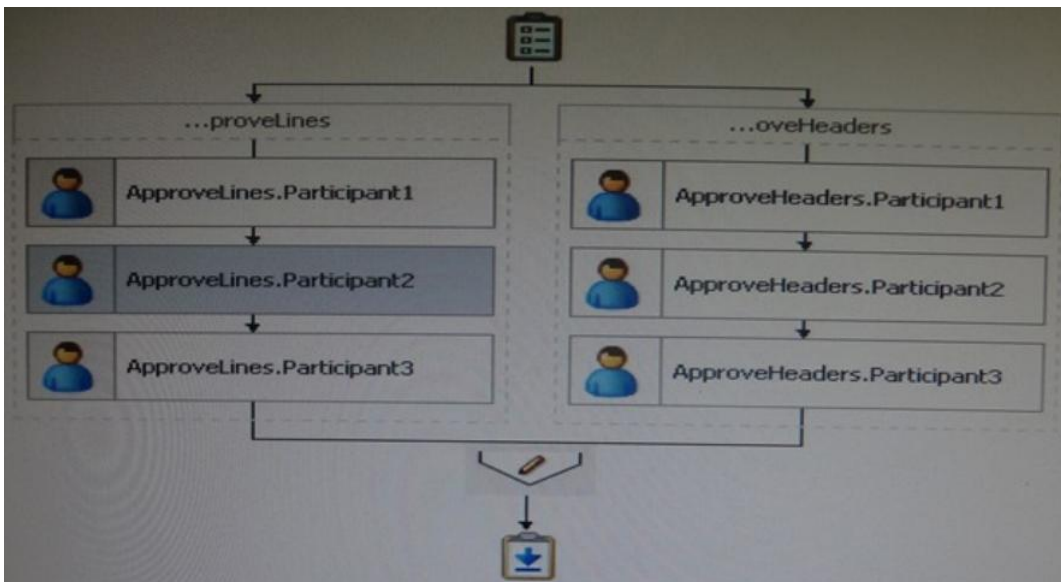
* The Conditions area in a Decision Table includes one or more condition rows. Each condition row has a condition expression and, for each rule, a condition cell. A condition expression is an expression that you build in Rules Designer. The condition expression is often a fact property or a function result, but it can be any expression that has a type that can be associated with a bucketset.

B: A Decision Table displays multiple related rules in a single spreadsheet-style view. In Rules Designer a Decision Table presents a collection of related business rules with

condition rows, rules, and actions presented in a tabular form that is easy to understand. Business users can compare cells and their values at a glance and can use Decision Table rule analysis features by clicking icons and selecting values in Rules Designer to help identify and correct conflicting or missing cases.

Question No : 7

View the Exhibit.



There are two groups acting on a task. The group on the left approves line items in the order.

The group on the right approves the order header. If any actor rejects the order the task completes without routing to any additional actors that have not yet acted on the task.

Identify the two options that should be selected in the human task definition to achieve this behavior.

- A. Complete parent tasks of early completing subtasks.
- B. Each parallel participant has a local copy of the payload.
- C. Complete task when a participant chooses the reject option.
- D. Enable early completion in parallel subtasks.

Answer: A,C

Explanation: A: Complete parent tasks of early completing subtasks:

This option is for environments in which you have multiple stages and participants working in parallel.

Participants perform subtasks in parallel, and one group's rejection or approval of a subtask causes the other group's subtask to also be rejected or approved.

C: Complete task when a participant chooses: <outcome>

A participant in a task can accept or reject it, thus ending the workflow without the task being sent to any other participant. For example, a manager rejects a purchase order, meaning that purchase order is not sent to their manager for review.

Incorrect:

Not D: Enable early completion in parallel subtasks

This option is for environments in which you have multiple stages and participants working in parallel.

Participants perform subtasks in parallel, and one group's rejection or approval of a subtask does not cause the other group's subtask to also be rejected or approved.

Question No : 8

An Oracle Web Services Manager (OWSM) agent _____.

- A. Can apply categories of policies in any specified order
- B. Generates a request to an LDAP directory to look up policy definitions
- C. Always fails if the Policy Manager becomes unavailable
- D. Intercepts requests to and responses from a client or service

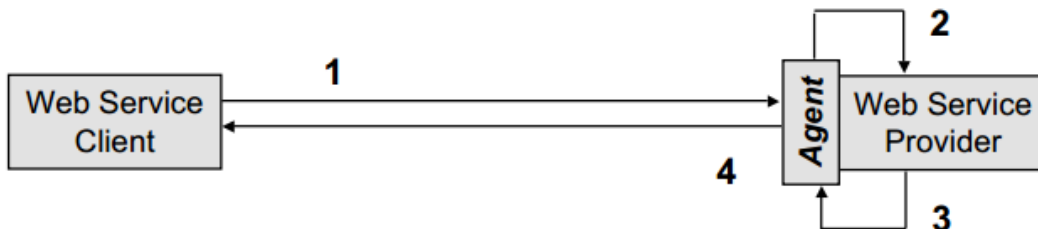
Answer: D

Explanation: The OWSM Agent protects access to a web service at the web service provider (server-side Agent)

- Step1: The client posts a request to a web service
- Step2: The Agent intercepts the request, applies security policies (e.g., decryption, signature verification, authentication, authorization), and passes

the request to the web service

- Step3: The web service returns a response
- Step4: The Agent intercepts the response, applies security policies (e.g., encryption), and passes the response to the client



Question No : 9

Which statement is correct about a JCA common client interface?

- A.** The JCA binding component uses the JCA common client Interface APIs to communicate with the resource adapter.
- B.** The resource adapter uses the common client interface APIs to communicate with the EIS.
- C.** The resource adapter implements the standard MessageListener interface to poll for events from the EIS.
- D.** The application server uses the common client interface APIs to commune with the EIS.

Answer: A

Explanation:

Note:

* The Common Client Interface (CCI) is the JCA-recommended client API for all resource adapters.

* A resource adapter is a system-level software driver that enables J2EE components to communicate with a back-end enterprise information system (EIS) through a JCA-compliant application server when a resource adapter for the specific EIS is deployed to the server.

Question No : 10

A partner needs to access services that are defined in one of your Service Composite Architecture (SCA) applications via a web service interface. Which approach (and accompanying reasoning) describes a loosely coupled and robust solution?

- A.** Use Oracle Service Bus to provide an Interface layer over your SCA application. This enables you to hide the locations of your SCA application, perform load-balancing across those endpoints, and provide the ability to define service level agreements to help ensure that you are meeting your contractual obligations to the partner.
- B.** Use the Mediator component to provide a web service interface to your SCA application. This arrives you the flexibility of using the industry standard XSLT technology to perform translation and transformations.
- C.** Use Oracle Service Bus to provide an interface layer over your SCA application. This enables you to "skin" your SCA application with a web service interface and still provide a robust experience to the partner.
- D.** Allow the partner simply to connect directly to the SCA application. This provides the best performance and helps keep the partner happy.

Answer: A

Explanation: * Oracle Service Bus supports the following capabilities for the transformation or processing of messages:

/ Transforms messages based on XQuery or XSLT

etc:

Validates incoming messages against schemas

Selects a target service or services, based on the message content or message headers

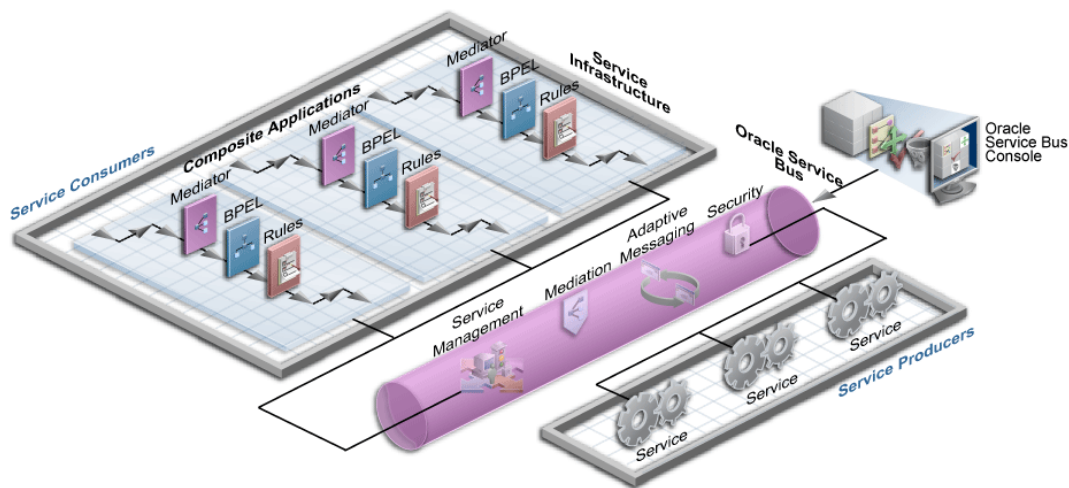
Transforms messages based on the target service

Supports transformations on both XML and MFL messages

Message enrichment

Supports callouts to Web services to gather additional data for transformation (for example, country code, full customer records, and so on)

* Oracle Service Bus Intermediary


Question No : 11

In a BPEL model, what is quickest way to implement a capability to skip rule execution if particular condition holds?

- A. Model a switch activity to conditionally execute the business rule component.
- B. Use a skip condition on the business rule component.
- C. Include an XPath expression in an annotation on the business rule component.
- D. Use a correlation set on the business rule component.

Answer: C

Question No : 12

In a design session, a colleague makes the following comments about cluster support for Oracle SOA Suite 11g application. Which two statements are correct?

- A. A cluster appears to clients as multiple WebLogic Server instances
- B. The server instances in a cluster must all run on the same machine.
- C. You can scale a cluster by adding machines to the cluster to host additional server instances.
- D. Server instances in a cluster can run different versions of WebLogic Server.
- E. You can create it cluster by using WLST, the WebLogic Server Administration Console