

# Cisco

## Exam 300-115

### Implementing Cisco IP Switched Networks

Version: 14.0

[ Total Questions: 201 ]

**Question No : 1**

A network engineer wants to make sure that an access switch will never become a Spanning Tree root for VLAN 5. What action will accomplish this task?

- A. adjust STP priority to the maximum value
- B. disable STP globally
- C. apply root guard to all outgoing neighbor interfaces
- D. enable MSTP and use a different revision number than all other switches

**Answer: A**

**Question No : 2**

Which authentication service is needed to configure 802.1x?

- A. RADIUS with EAP Extension
- B. TACACS+
- C. RADIUS with CoA
- D. RADIUS using VSA

**Answer: A**

**Question No : 3**

Which switch feature determines validity based on IP-to-MAC address bindings that are stored in a trusted database?

- A. Dynamic ARP Inspection
- B. storm control
- C. VTP pruning
- D. DHCP snooping

**Answer: A**

**Question No : 4**

What is the default amount by which the hot standby priority for the router is decremented or incremented when the interface goes down or comes back up?

- A. 1
- B. 5
- C. 10
- D. 15

**Answer: C**

**Question No : 5**

Which feature describes MAC addresses that are dynamically learned or manually configured, stored in the address table, and added to the running configuration?

- A. sticky
- B. dynamic
- C. static
- D. secure

**Answer: A**

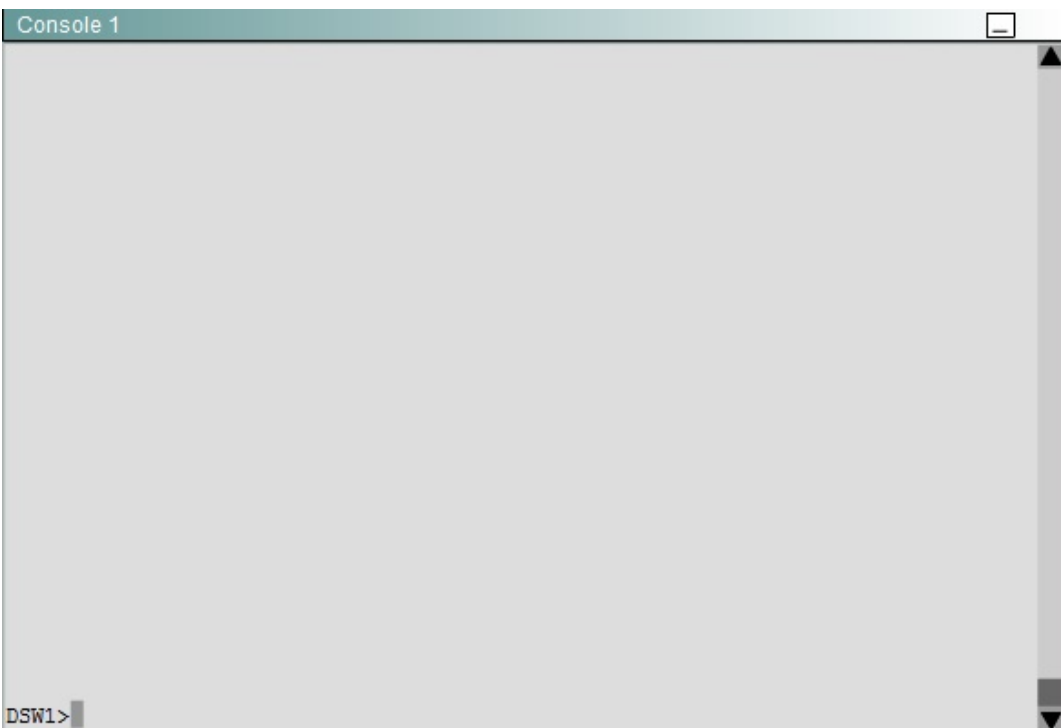
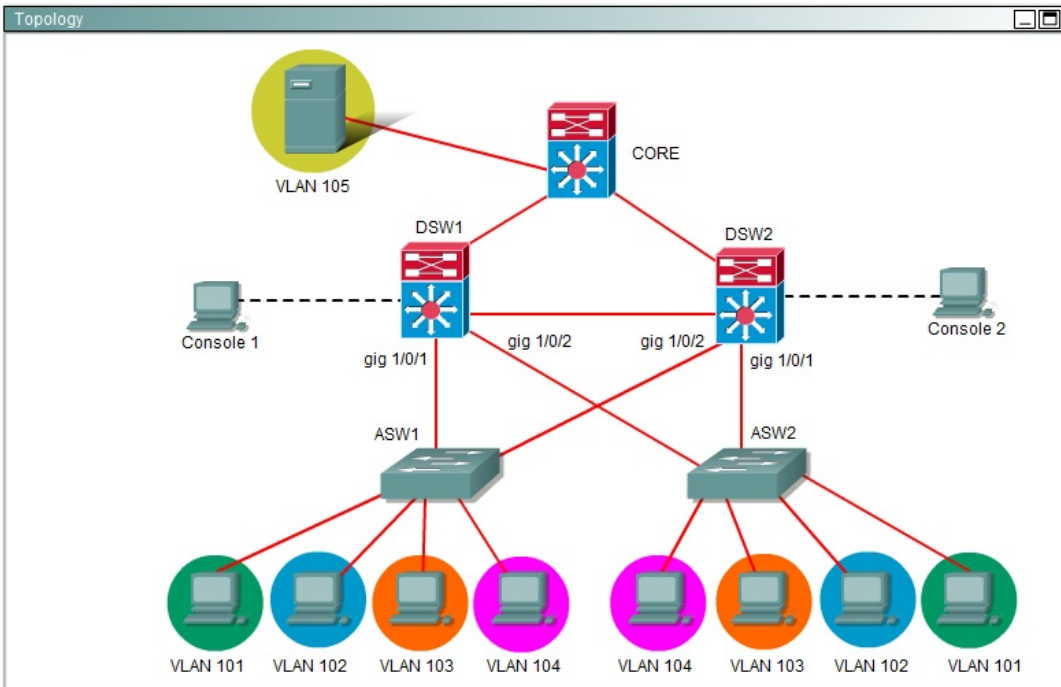
**Question No : 6**

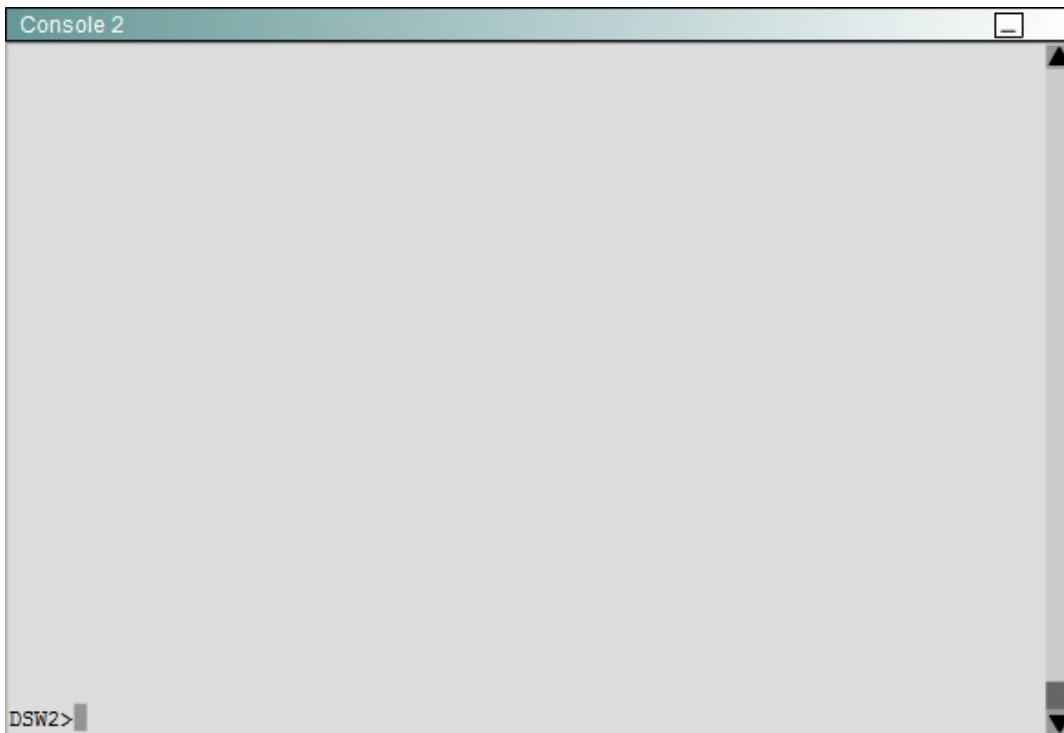
Ferris Plastics, Inc. is a medium sized company, with an enterprise network (access, distribution and core switches) that provides LAN connectivity from user PCs to corporate servers. The distribution switches are configured to use HSRP to provide a high availability solution.

- DSW1 -primary device for VLAN 101 VLAN 102 and VLAN 105
- DSW2 - primary device for VLAN 103 and VLAN 104
- A failure of GigabitEthernet1/0/1 on primary device should cause the primary device to release its status as the primary device, unless GigabitEthernet1/0/1 on backup device has also failed.

Troubleshooting has identified several issues. Currently all interfaces are up. Using the running configurations and show commands, you have been asked to investigate and respond to the following question.

# Cisco 300-115 : Practice Test





During routine maintenance, GigabitEthernet1/0/1 on DSW1 was shut down. All other interfaces were up. DSW2 became the active HSRP device for VLAN 101 as desired. However, after GigabitEthernet1/0/1 on DSW1 was reactivated, DSW1 did not become the active router for VLAN 101 as desired. What needs to be done to make the group for VLAN 101 function properly?

- A. Enable preempt in the VLAN 101 HSRP group on DSW1.
- B. Disable preempt in the VLAN 101 HSRP group on DSW2's.
- C. In the VLAN 101 HSRP group on DSW1, decrease the priority value to a value that is less than the priority value configured in the VLAN 101 HSRP group on DSW2.
- D. Decrease the decrement value in the track command for the VLAN 101 HSRP group on all DSWs to a value less than the value in the track command for the VLAN 101 HSRP group on DSW2.

**Answer: A**

**Question No : 7**

Which configuration command ties the router hot standby priority to the availability of its interfaces?

- A. standby group

- B. standby priority
- C. backup interface
- D. standby track

**Answer: D**

**Question No : 8**

A network engineer wants to add a new switch to an existing switch stack. Which configuration must be added to the new switch before it can be added to the switch stack?

- A. No configuration must be added.
- B. stack ID
- C. IP address
- D. VLAN information
- E. VTP information

**Answer: A**

**Question No : 9**

After UDLD is implemented, a Network Administrator noticed that one port stops receiving UDLD packets. This port continues to reestablish until after eight failed retries. The port then transitions into the errdisable state. Which option describes what causes the port to go into the errdisable state?

- A. Normal UDLD operations that prevent traffic loops.
- B. UDLD port is configured in aggressive mode.
- C. UDLD is enabled globally.
- D. UDLD timers are inconsistent.

**Answer: B**

**Question No : 10**

When two MST instances (MST 1 and MST 2) are created on a switch, what is the total number of spanning-tree instances running on the switch?

- A. 1
- B. 2
- C. 3
- D. 4

**Answer: C**

**Question No : 11**

After configuring new data VLANs 1020 through 1030 on the VTP server, a network engineer notices that none of the VTP clients are receiving the updates. What is the problem?

- A. The VTP server must be reloaded.
- B. The VTP version number must be set to version 3.
- C. After each update to the VTP server, it takes up to 4 hours propagate.
- D. VTP must be stopped and restarted on the server.
- E. Another switch in the domain has a higher revision number than the server.

**Answer: B**

**Question No : 12**

Refer to the exhibit.

```
Switch1 (config)#vlan 10
VTP vlan configuration not allowed when device is in CLIENT mode.
Switch1#show interfaces trunk
Switch1#
```

The users in an engineering department that connect to the same access switch cannot access the network. The network engineer found that the engineering VLAN is missing from the database. Which action resolves this problem?

- A. Disable VTP pruning and disable 802.1q.
- B. Update the VTP revision number.
- C. Change VTP mode to server and enable 802.1q.

D. Enable VTP pruning and disable 802.1q.

**Answer: C**

**Question No : 13**

Refer to the exhibit.

```
SW-1#sh logging
%SPANTREE-SP-2-RECV_PVID_ERR: Received BPDU with inconsistent peer
Vlan id 1 on GigabitEthernet11/2 VLAN2013.
%SPANTREE-SP-2-BLOCK_PVID_PEER: Blocking GigabitEthernet11/2 on
VLAN0001. Inconsistent peer vlan.
```

A multilayer switch has been configured to send and receive encapsulated and tagged frames. VLAN 2013 on the multilayer switch is configured as the native VLAN. Which option is the cause of the spanning-tree error?

- A. VLAN spanning-tree in SW-2 is configured.
- B. spanning-tree bpdu-filter is enabled.
- C. 802.1q trunks are on both sides, both with native VLAN mismatch.
- D. VLAN ID 1 should not be used for management traffic because its unsafe.

**Answer: C**

**Question No : 14**

Which option is the minimum number of bindings that the DHCP snooping database can store?

- A. 1000 bindings
- B. 2000 bindings
- C. 5000 bindings
- D. 8000 bindings

**Answer: D**



**Question No : 15**

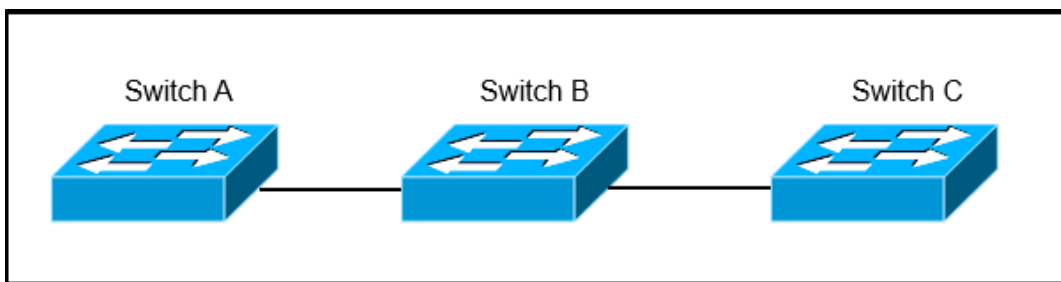
By default, what is the state of port security on a switch?

- A. disabled
- B. on
- C. off
- D. learning

**Answer: A**

**Question No : 16**

Refer to the exhibit.



Switch A, B, and C are trunked together and have been properly configured for VTP. Switch B has all VLANs, but Switch C is not receiving traffic from certain VLANs. What would cause this issue?

- A. A VTP authentication mismatch occurred between Switch A and Switch B.
- B. The VTP revision number of Switch B is higher than that of Switch A.
- C. VTP pruning is configured globally on all switches and it removed VLANs from the trunk interface that is connected to Switch C.
- D. The trunk between Switch A and Switch B is misconfigured.

**Answer: C**

**Question No : 17**

Which option lists the modes that are available for configuring UDLD on a Cisco switch?

- A. normal and aggressive
- B. active and aggressive
- C. normal and active
- D. normal and passive
- E. normal and standby

**Answer: A**

**Question No : 18**

Which First Hop Redundancy Protocol is an IEEE Standard?

- A. GLBP
- B. HSRP
- C. VRRP
- D. OSPF

**Answer: C**

**Question No : 19**

Your customer has asked you to come in and verify the operation of routers R1 and R2 which are configured to use HSRP. They have questions about how these two devices will perform in the event of a device failure.