

Sybase

Exam 510-802

Sybase PowerDesigner Data Modeling Pro.Exam (version 12.1)

Version: 5.0

[Total Questions: 120]

Topic 0, A

A

Question No : 1 - (Topic 0)

Which of the following is FALSE about PowerDesigner's reporting feature?

- A. The Report Editor and the Multi-Model Report Editor have their own windows but share the same graphical interface.
- B. You cannot open the Report Template Editor with no model attached to it.
- C. PowerDesigner contains a series of predefined structures called templates.
- D. The Report Language Editor is an independent module.

Answer: B**Question No : 2 - (Topic 0)**

PowerDesigner uses _____ to create Report templates.

- A. Word
- B. Model Editor
- C. Wordpad
- D. Report Template Editor
- E. Notepad

Answer: D**Question No : 3 - (Topic 0)**

To choose the columns displayed in a report list item, right-click the list item in the Report Editor and choose the _____ menu entry.

- A. Layout
- B. Format
- C. Selection
- D. Edit Title ?Edit Title

Answer: A**Question No : 4 - (Topic 0)**

Sybase 510-802 : Practice Test

A model has Diagram_1, Diagram_2, Diagram_3. A report contains only the diagram\graphic node. How do I generate a report with diagrams in the order Diagram_2, Diagram_3 and Diagram_1?

- A. Report -> Select Objects
- B. Right-click Graphics -> Selection
- C. Right-click Diagram -> Selection and make your selection Define Sort and Filter Window
- D. Right-click Diagram ->? Selection and make your selection from the Select Objects Window

Answer: C

Question No : 5 - (Topic 0)

What does "Format" on the Graphics item of the Report Editor allow you to control?
(Choose 2)

- A. The scale of the diagram image output to the report
- B. The type of image output to the report only
- C. The font and paragraph placement of the image and caption output to the report
- D. The display of the frame around the diagram image output to the report

Answer: A,D

Question No : 6 - (Topic 0)

PowerDesigner reports support which generation formats?

- A. Plain Text
- B. HTML
- C. RTF
- D. XML
- E. Tab Delimited Values
- F. CSV

Answer: B,C,D,F

Question No : 7 - (Topic 0)

Check model errors are displayed in which windows? (Choose 2)

- A. Result List
- B. Output
- C. Diagram
- D. Browser
- E. Merge Models
- F. Check Model Parameters

Answer: A,B

Question No : 8 - (Topic 0)

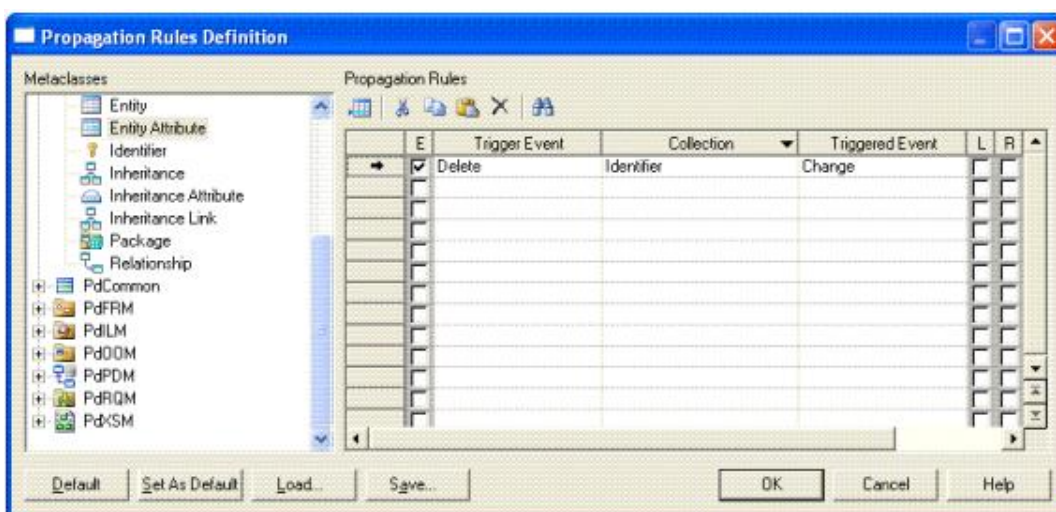
Which of the following objects are NOT available in a PowerDesigner CDM? (Choose 3)

- A. Entity
- B. Table
- C. Relationship
- D. Attribute
- E. Key
- F. Reference

Answer: B,E,F

Question No : 9 - (Topic 0)

How would you read the following propagation rule?



- A. When an entity attribute is changed, the collection identifier is deleted.

- B. When an entity attribute is deleted, the collection identifier is changed.
- C. When an identifier is changed, the collection entity attribute is deleted.
- D. When an identifier is changed, the collection entity attribute is changed.

Answer: B

Question No : 10 - (Topic 0)

Which sequence represents the hierarchy display in the Browser?

- A. Model -> Folder -> Workspace
- B. Workspace -> Folder -> Model
- C. Folder -> Workspace -> Model
- D. Folder ->Model -> Workspace

Answer: B

Question No : 11 - (Topic 0)

In the Merge Model window, what does a red exclamation mark mean?

- A. Object has been created.
- B. Object has been modified.
- C. Object has been moved.
- D. Object has been deleted.

Answer: B

Question No : 12 - (Topic 0)

Customizing your favorite tabs ?

- A. persist when the model is closed.
- B. returns to default when the model is closed.
- C. is defined on a package-per-package basis.
- D. is defined on a diagram-per-diagram basis.

Answer: A

Question No : 13 - (Topic 0)

Which of the following can NOT be added to a Workspace?

- A. Folder
- B. Image file
- C. Model
- D. Report template
- E. Workspace

Answer: E

Question No : 14 - (Topic 0)

On the Merging Model window, a user can?On the Merging Model window, a user can

- A. use the Change Filter tool to show only deleted objects.
- B. place a check in a check box to prevent the change indicated.
- C. see the to model on the left side and from model on the right side.
- D. right-click a specific line item to remove it from the list.

Answer: A

Question No : 15 - (Topic 0)

Which categories are NOT found in General Options? (Choose 2)

- A. General
- B. Dialog
- C. Object View
- D. Naming Convention
- E. Repository

Answer: C,D

Question No : 16 - (Topic 0)

Which of the following can NOT be set using a template model?

- A. Model Options
- B. Custom Shapes
- C. Display Preferences
- D. General Options

Answer: D

Question No : 17 - (Topic 0)

Where are the naming conventions for objects set?

- A. Tools -> General Options
- B. Tools -> Display Preferences
- C. Tools -> Resources
- D. Tools -> Model Options

Answer: D

Question No : 18 - (Topic 0)

In the Customize Columns and Filter window, what are the available wild cards? (Choose 2)

- A. %
- B. *
- C. _
- D. ?

Answer: B,D

Question No : 19 - (Topic 0)

What are NOT common uses of the Generation Template Language (GTL)?

- A. Creating or modifying the DDL generation for an RDBMS
- B. Defining the Trigger Template or Template Items
- C. Defining tabs and forms for Extended Attributes
- D. Creating custom naming convention scripts