

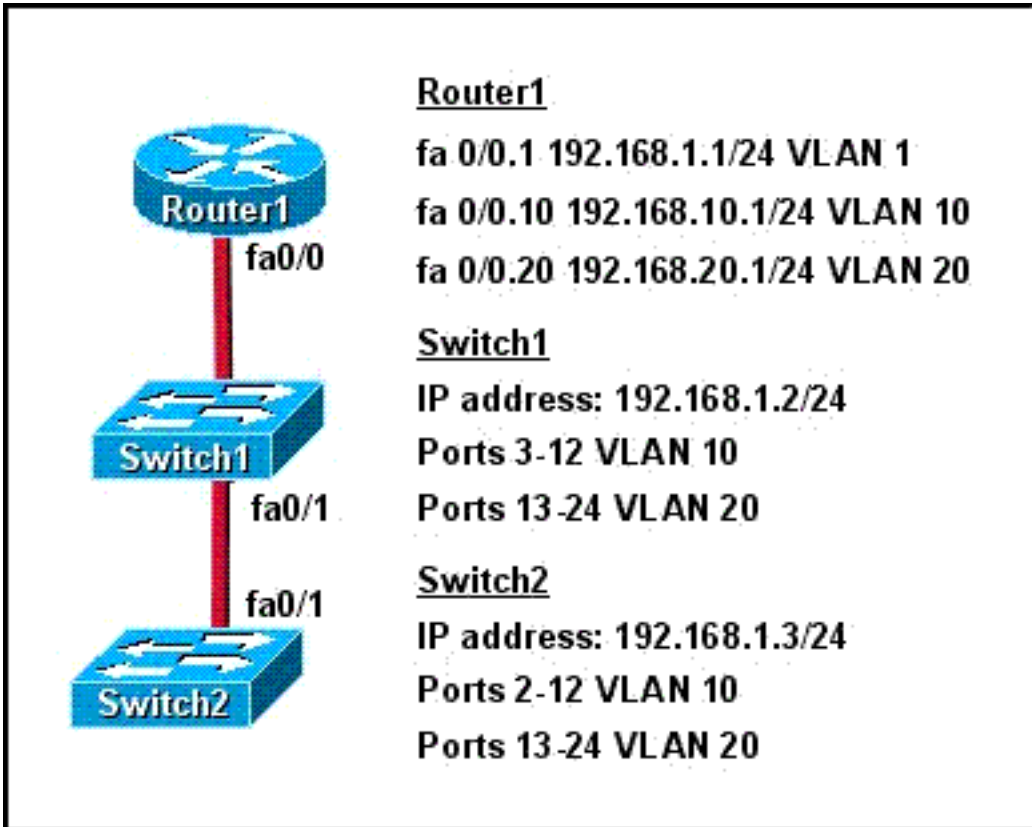
Cisco 640-816

Interconnecting Cisco Networking Devices Part 2
Version: 11.3

Topic 1, Volume A

QUESTION NO: 1

Refer to the exhibit.



How should the FastEthernet0/1 ports on the 2950 model switches that are shown in the exhibit be configured to allow connectivity between all devices?

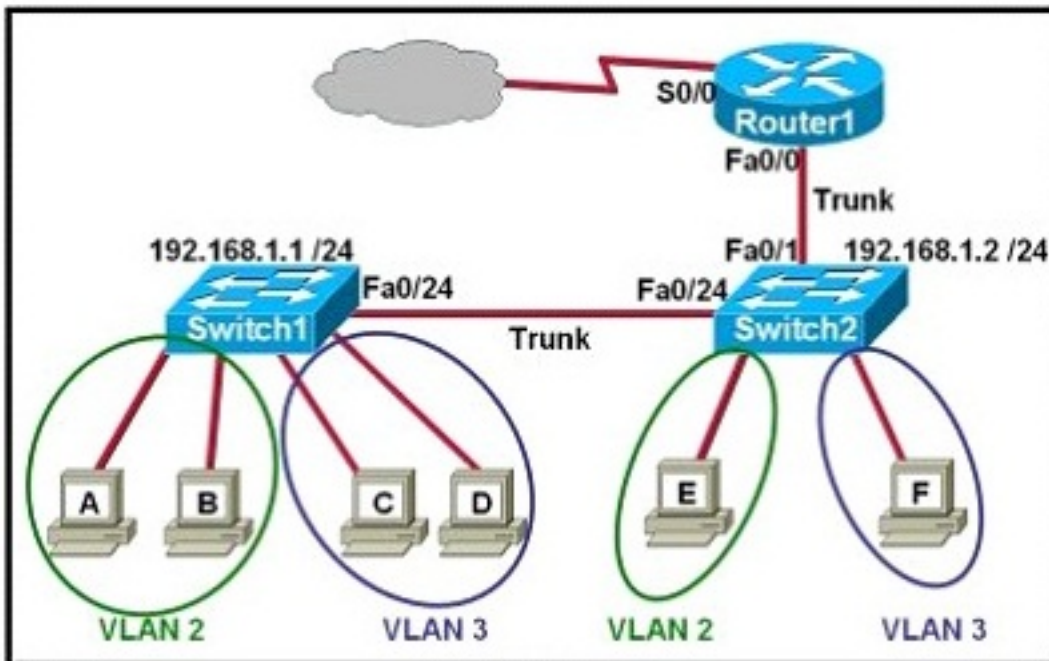
- A. The ports only need to be connected by a crossover cable.
- B. SwitchX (config)# interface fastethernet 0/1
 SwitchX (config-if)# switchport mode access
 SwitchX (config-if)# switchport access vlan 1
- C. SwitchX (config)# interface fastethernet 0/1
 SwitchX (config-if)# switchport mode trunk
 SwitchX (config-if)# switchport trunk vlan 1
 SwitchX (config-if)# switchport trunk vlan 10
 SwitchX (config-if)# switchport trunk vlan 20
- D. SwitchX(config)# interface fastethernet 0/1
 SwitchX(config-if)# switchport mode trunk

Answer: D

Explanation:

QUESTION NO: 2

Refer to the exhibit.



Which two statements are true about interVLAN routing in the topology that is shown in the exhibit? (Choose two.)

- A. Host E and host F use the same IP gateway address.
- B. Router1 and Switch2 should be connected via a crossover cable.
- C. Router1 will not play a role in communications between host A and host D.
- D. The FastEthernet 0/0 interface on Router1 must be configured with subinterfaces.
- E. Router1 needs more LAN interfaces to accommodate the VLANs that are shown in the exhibit.
- F. The FastEthernet 0/0 interface on Router1 and Switch2 trunk ports must be configured using the same encapsulation type.

Answer: D,F

Explanation:

QUESTION NO: 3

A department decides to replace its hub with a Catalyst 2950 switch that is no longer needed by another department. To prepare the switch for installation, the network administrator has erased the startup configuration and reloaded the switch. However, PCs that are connected to the switch experience various connectivity problems. What is a possible cause of the problem?

- A. The VLAN database was not erased.
- B. The management VLAN is disabled.
- C. The running configuration should have been erased.
- D. The "mode" button was not pressed when the switch was reloaded.
- E. The switch was not configured with an IP address or a default gateway.

Answer: A**Explanation:****QUESTION NO: 4**

Refer to the exhibit.

```
Switch# show spanning-tree vlan 1
VLAN0001
Spanning tree enabled protocol rstp
Root ID    Priority    20481
           Address    0008.217a.5800
           Cost      38
           Port      1 (FastEthernet0/1)
           Hello Time 2 sec  Max Age 20 sec  Forward Delay 15 sec

Bridge ID  Priority    32769 (priority 32768 sys-id-ext 1)
           Address    0008.205e.6600
           Hello Time 2 sec  Max Age 20 sec  Forward Delay 15 sec
           Aging Time 300

Interface      Role Sts Cost      Prio.Nbr Type
-----
Fa0/1          Root FWD 19        128.1   P2p
Fa0/4          Desg FWD 38        128.1   P2p
Fa0/11         Altn BLK 57        128.1   P2p
Fa0/13         Desg FWD 38        128.1   P2p
```

Why has this switch not been elected the root bridge for VLAN1?

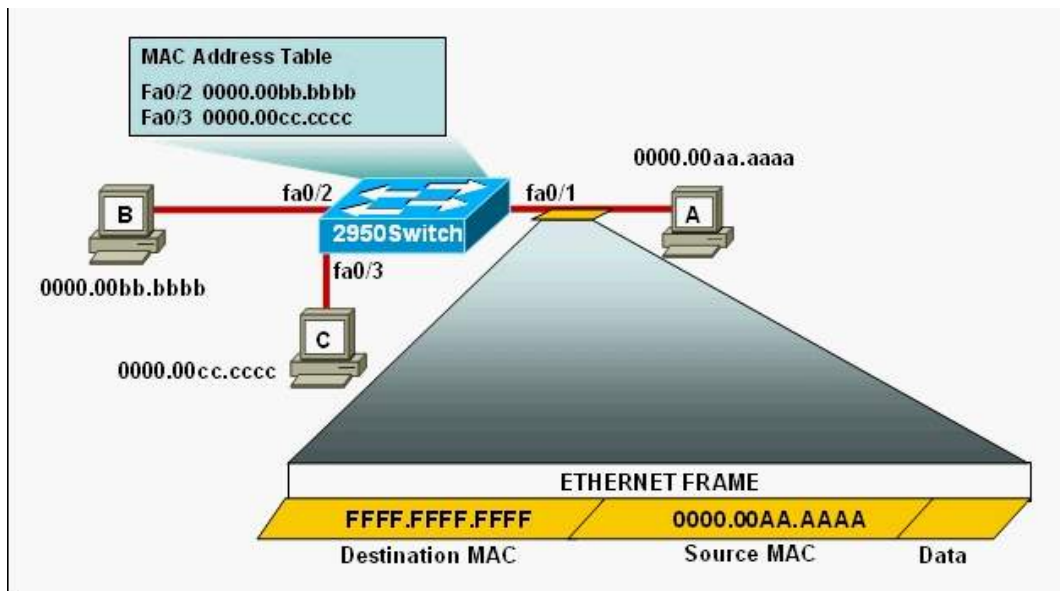
- A. It has more than one interface that is connected to the root network segment.
- B. It is running RSTP while the elected root bridge is running 802.1d spanning tree.
- C. It has a higher MAC address than the elected root bridge.
- D. It has a higher bridge ID than the elected root bridge.

Answer: D

Explanation:

QUESTION NO: 5

Refer to the exhibit.



The following commands are executed on interface fa0/1 of 2950Switch.

```
2950Switch(config-if)# switchport port-security
```

```
2950Switch(config-if)# switchport port-security mac-address sticky
```

```
2950Switch(config-if)# switchport port-security maximum 1
```

The Ethernet frame that is shown arrives on interface fa0/1.

What two functions will occur when this frame is received by 2950Switch? (Choose two.)

- A. The MAC address table will now have an additional entry of fa0/1 FFFF.FFFF.FFFF.
- B. Only host A will be allowed to transmit frames on fa0/1.
- C. This frame will be discarded when it is received by 2950Switch.
- D. All frames arriving on 2950Switch with a destination of 0000.00aa.aaaa will be forwarded out fa0/1.
- E. Hosts B and C may forward frames out fa0/1 but frames arriving from other switches will not be forwarded out fa0/1.
- F. Only frames from source 0000.00bb.bbbb, the first learned MAC address of 2950Switch, will be forwarded out fa0/1.

Answer: B,D

Explanation:

QUESTION NO: 6

Which two of these statements regarding RSTP are correct? (Choose two.)

- A. RSTP cannot operate with PVST+.
- B. RSTP defines new port roles.
- C. RSTP defines no new port states.
- D. RSTP is a proprietary implementation of IEEE 802.1D STP.
- E. RSTP is compatible with the original IEEE 802.1D STP.

Answer: B,E

Explanation:

QUESTION NO: 7

Refer to exhibit.

```
Current configuration : 639 bytes
!
version 12.4
no service timestamps log datetime msec
no service timestamps debug datetime msec
service password-encryption
!
hostname Router
!

enable secret 5 $1$MERr$hx5rvt7rPNoS4wqbxxx7m0
!

interface FastEthernet0/0
 ip address 192.168.1.1 255.255.255.0
 ip access-group 101 in
 duplex auto
 speed auto
!
access-list 101 deny tcp any any eq 22
access-list 101 permit ip any any
!
line con 0
 password 7 082245500A16
 login
line vty 0 4
 login
line vty 5 14
 login
!
end
```

A network administrator cannot establish a Telnet session with the indicated router. What is the cause of this failure?

- A. A Level 5 password is not set.
- B. An ACL is blocking Telnet access.
- C. The vty password is missing.
- D. The console password is missing.

Answer: C

Explanation:

QUESTION NO: 8

A network administrator needs to configure port security on a switch. Which two statements are true? (Choose two.)

- A. The network administrator can apply port security to dynamic access ports.
- B. The network administrator can apply port security to EtherChannels.
- C. When dynamic MAC address learning is enabled on an interface, the switch can learn new addresses, up to the maximum defined.
- D. The sticky learning feature allows the addition of dynamically learned addresses to the running configuration.
- E. The network administrator can configure static secure or sticky secure MAC addresses in the voice VLAN.

Answer: C,D

Explanation:

QUESTION NO: 9

What are two characteristics of a switch that is configured as a VTP client? (Choose two.)

- A. If a switch that is configured to operate in client mode cannot access a VTP server, then the switch reverts to transparent mode.
- B. On switches that are configured to operate in client mode, VLANs can be created, deleted, or renamed locally.
- C. The local VLAN configuration is updated only when an update that has a higher configuration revision number is received.
- D. VTP advertisements are not forwarded to neighboring switches that are configured in VTP transparent mode.
- E. VTP client is the default VTP mode.
- F. When switches in VTP client mode are rebooted, they send a VTP advertisement request to the VTP servers.

Answer: C,F

Explanation:

QUESTION NO: 10

At which layer of the OSI model is RSTP used to prevent loops?

- A. physical
- B. data link

- C. network
- D. transport

Answer: B

Explanation:

QUESTION NO: 11

Which protocol provides a method of sharing VLAN configuration information between two Cisco switches?

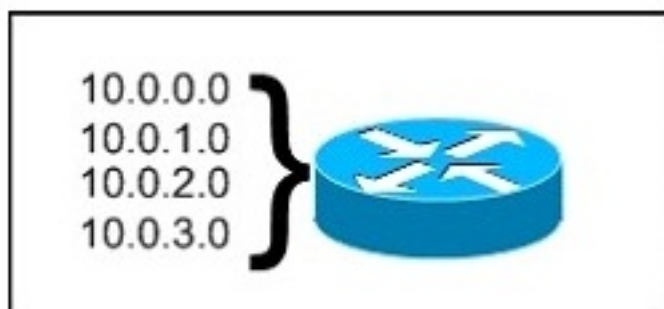
- A. STP
- B. VTP
- C. 802.1Q
- D. RSTP

Answer: B

Explanation:

QUESTION NO: 12

Refer to the exhibit.



What is the most appropriate summarization for these routes?

- A. 10.0.0.0 /21
- B. 10.0.0.0 /22
- C. 10.0.0.0 /23
- D. 10.0.0.0 /24

Answer: B

Explanation:

QUESTION NO: 13

The network administrator has been asked to give reasons for moving from IPv4 to IPv6. What are two valid reasons for adopting IPv6 over IPv4? (Choose two.)

- A. no broadcast
- B. change of source address in the IPv6 header
- C. change of destination address in the IPv6 header
- D. Telnet access does not require a password
- E. autoconfiguration
- F. NAT

Answer: A,E

Explanation:

QUESTION NO: 14

The network technician is planning to use the 255.255.255.224 subnet mask on the network. Which three valid IP addresses can the technician use for the hosts? (Choose three.)

- A. 172.22.243.127
- B. 172.22.243.190
- C. 172.22.243.191
- D. 192.168.1.160
- E. 10.17.64.34
- F. 10.16.33.98

Answer: B,E,F

Explanation:

QUESTION NO: 15

Which of these represents an IPv6 link-local address?

- A. FE80::380e:611a:e14f:3d69