

**Cisco 642-359**

**Implementing Cisco Storage Network Solutions**  
Version: 4.0

**QUESTION NO: 1**

Which command would you use to determine if device aliases in VSAN 5 are configured for fabriC.wide distribution?

- A. show zoneset name alias vsan 5
- B. show cfs application name device-alias
- C. showfcalias distribution vsan 5
- D. show vsan 5 device-alias status

**Answer: B**

**Explanation:**

**QUESTION NO: 2 DRAG DROP**

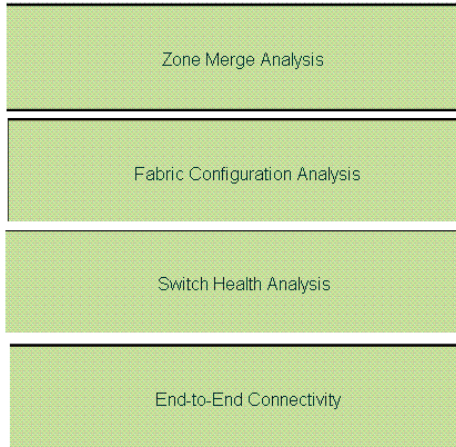
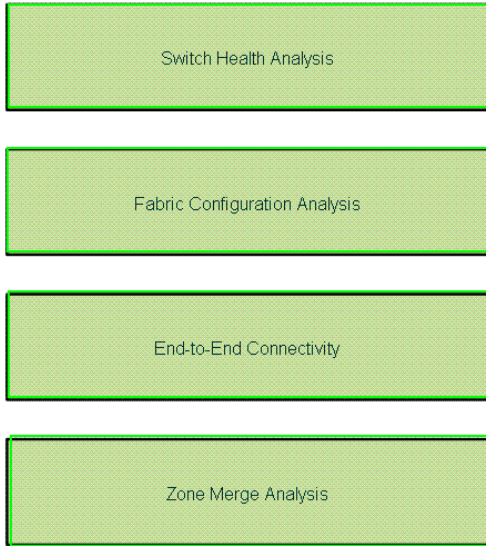
Drop

Drag the Cisco analysis tool on the left to its appropriate description on the right.

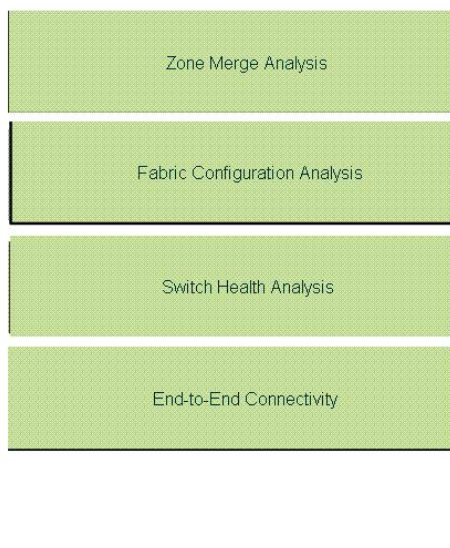
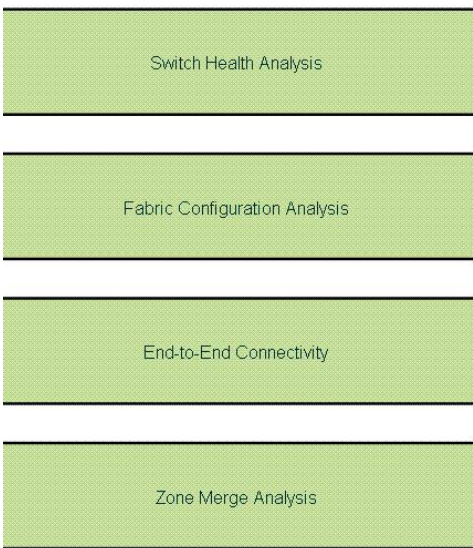
Switch Health Analysis	determines if switches will connect successfully without fabric isolation due to mismatched port membership
Fabric Configuration Analysis	compares the configurations of all Cisco MDS switches in a fabric to a reference switch or a policy file
End-to-End Connectivity	runs an in-depth switch analysis with Fabric Manager, verifying status of all critical MDS system, module, port, and Fibre Channel services
Zone Merge Analysis	utilizes FC Ping to verify interconnections between Cisco MDS switches and end-device (HBAs and storage devices) in a particular VSAN

Drag and drop question. Drag the items to the proper locations.

**Answer:**



**Explanation:**



**QUESTION NO: 3**

The MDS 9000 family switches use what three technologies to protect against unauthorized management access? (Choose three.)

- A. SNMPV3
- B. SSH
- C. RBAC
- D. RMON
- E. E. ses
- F. WEBM

**Answer: A,B,C**

**Explanation:**

**QUESTION NO: 4**

What is a benefit of enhanced zoning?

- A. fabric locked during configuration changes
- B. larger zoning database size
- C. database rollback in case of failure
- D. zones allowed to span VSANs

**Answer: A**

**Explanation:**

**QUESTION NO: 5**

Which two of these environments suggest the use of FCIP Write Acceleration? (Choose two.)

- A. remote tape backup
- B. Port Channel links between sites
- C. applications that support multiple outstanding I/Os
- D. fast network with minimal delays
- E. DWDM links

**Answer: B,C**

**Explanation:**

**QUESTION NO: 6**

Which three of the following are possible reasons why a line card module does not come online? (Choose three.)

- A. Port indexes have been taken offline.
- B. Available port indexes are noncontiguous.
- C. Not enough power is available in the chassis.
- D. An invalid interoperability mode has been configured.
- E. Unsupported SFPs have been installed.

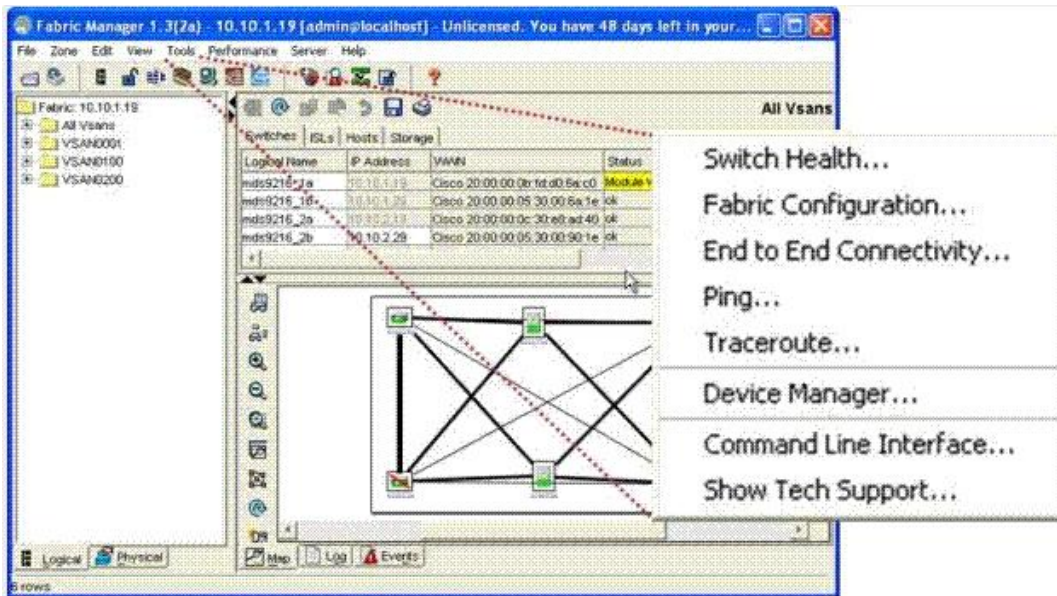
F. Not enough port indexes are available.

**Answer: B,C,F**

**Explanation:**

### QUESTION NO: 7

Refer to the exhibit.



Which two options from the Tools menu would you select to verify connectivity and latency to a Fibre Channel end device? (Choose two.)

- A. Switch Health
- B. Fabric Configuration
- C. End to End Connectivity
- D. Ping
- E. Device Manager

**Answer: C,D**

**Explanation:**

### QUESTION NO: 8

During initial switch configuration, the administrator elects to enable full zoneset distribution. What is the impact of this choice during zoneset activation?

- A. only the active zoneset is distributed to all switches in the fabric
- B. both the full zone database and active zoneset are distributed to all switches in the fabric
- C. both FCID and WWN information are distributed to all switches in the fabric
- D. only the full zone database is distributed to all switches in the fabric

**Answer: B**

**Explanation:**

#### QUESTION NO: 9

You are asked to review the running configuration of a switch that a junior administrator has prepared to be placed in a heterogeneous SAN environment. This environment includes three different brands of Fibre Channel switches. In this particular environment, only VSAN 1 is being used.

Which of these attributes suggests that the switch has been incorrectly configured?

- A. A static domain ID has been set to 0x21.
- B. The srC.dst-ox load balancing has been selected.
- C. Interop mode 1 has been selected.
- D. FCC has been enabled.

**Answer: A**

**Explanation:**

#### QUESTION NO: 10 DRAG DROP

Drop

Drag the correct compression mode on the left to its appropriate bandwidth on the right.

mode1

mode2

mode3

auto

a high-compression mode for low-bandwidth links (less than 10 Mbps)

a fast-compression mode for high-bandwidth links (greater than 25 Mbps)

a moderate compression mode for moderately low bandwidth links (between 10 and 25 Mbps)

default mode: picks the appropriate compression scheme based on the bandwidth of the link configured in the TCP parameters in the FCIP profile

Drag and drop question. Drag the items to the proper locations.

Answer:

mode1

mode2

mode3

auto

mode3

mode1

mode2

auto

Explanation:

mode1

mode2

mode3

auto

mode3

mode1

mode2

auto

**QUESTION NO: 11 DRAG DROP**

Drop

Click and drag each item on the left to its correct security description on the right.

SAN extension security	limits access to the switch by assigning roles or groups to users
Fabric Security	uses FC-SP to provide switch-switch and host-switch authentication
Switch Access Security	secures switch access through the CLI or SNMP
Port Security	uses AAA strategy to verify identity of, grant access to, and track the actions of remote users
User Authentication	prevents unauthorized access to a switch port
Role-Based Access	uses IPSec for confidentiality, integrity, and authentication between participating peers

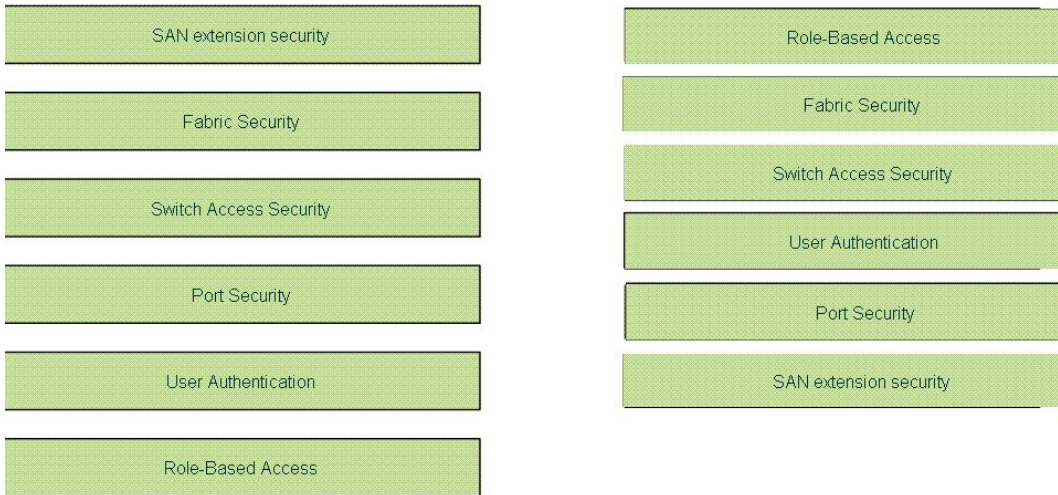
Drag and drop question. Drag the items to the proper locations.

**Answer:**

SAN extension security	Role-Based Access
Fabric Security	Fabric Security
Switch Access Security	Switch Access Security
Port Security	User Authentication
User Authentication	Port Security
Role-Based Access	SAN extension security

**Explanation:**



**QUESTION NO: 12**

When configuring FCIP, packet fragmentation should be avoided in order to achieve optimal throughput. Fragmentation can be avoided by knowing which of the following?

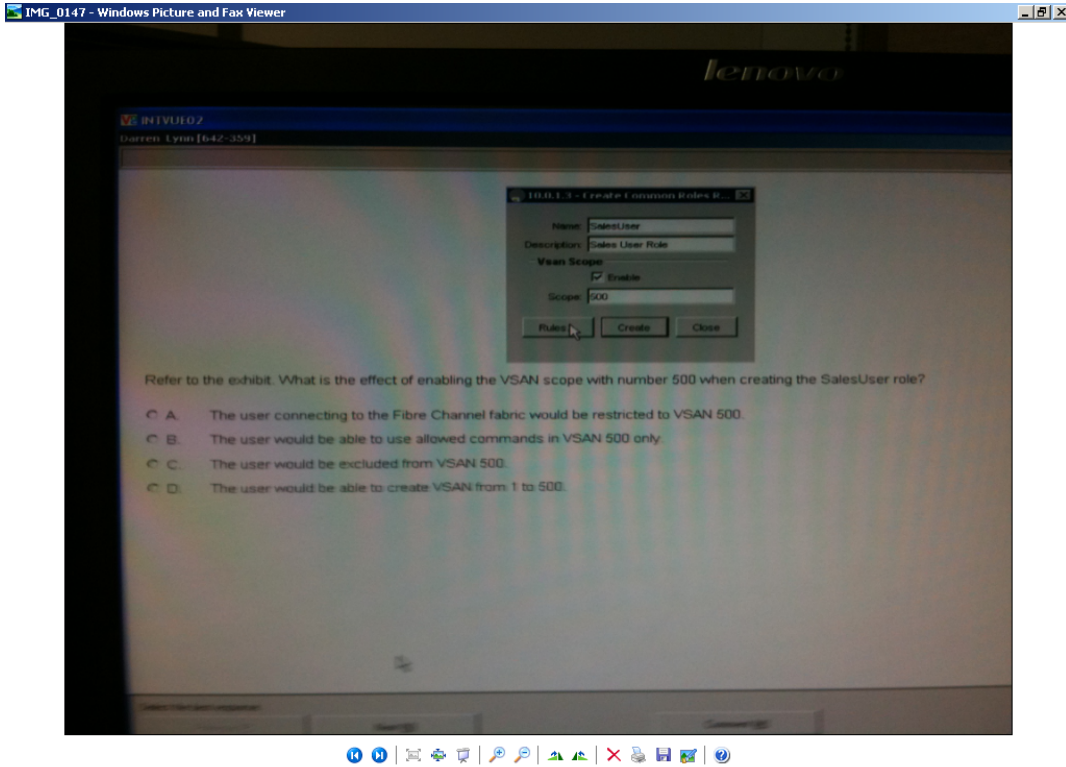
- A. MTU of the source IP interface
- B. largest MTU in the path
- C. smallest MTU in the path
- D. MTU of the destination IP interface

**Answer: C**

**Explanation:**

**QUESTION NO: 13**

Refer to the exhibit.



What is the effect of enabling the VSAN scope with number 500 when creating the SalesUser role?

- A. The user would be excluded from VSAN 500.
- B. The user would be able to use allowed commands in VSAN 500 only.
- C. The user would be able to create VSAN from 1 to 500.
- D. The user connecting to the Fibre Channel fabric would be restricted to VSAN 500.

**Answer: B**

**Explanation:**

#### QUESTION NO: 14

For purposes of granting restricted access to statically configure iSCSI virtual targets, which three of these can be used to identify iSCSI initiators? (Choose three.)

- A. iSCSI node name
- B. hostname
- C. IPv4 address and subnet
- D. MAC address
- E. IPv6 address
- F. iSCSIWWN