

**Cisco 642-373**

**642-383 Cisco Express Foundation for Field Engineers**

**Practice Test**

**Version 2.8**

**QUESTION NO: 1**

Which of the following best describe the customer benefits of change management in the operate phase?

- A. reduce unnecessary disruption, delays, rework, and other problems by establishing test cases for use in verifying that the system meets operational, functional, and interface requirements
- B. improve its ability to make sound financial decisions by developing a business case based on its business requirements and establishing a basis for developing a technology strategy
- C. reduce operating costs and limit change-related incidents by providing a consistent and efficient set of processes
- D. improve the return on investment and hasten migration by identifying and planning for necessary infrastructure changes and resource additions, as well as reduce deployment costs by analyzing gaps early in the planning process to determine what is needed to support the system

**Answer: C**

**QUESTION NO: 2**

Which of these is the best definition of the Cisco Lifecycle Services approach?

- A. It defines the minimum set of services required to successfully deploy and operate a set of Cisco technologies.
- B. It determines how best to price Cisco products.
- C. It provides partners with a useful way to leverage Cisco resources.
- D. It consists of these phases: plan, deploy, support, and troubleshoot.

**Answer: A**

**QUESTION NO: 3**

What two types of telephony interfaces are used for PSTN connectivity? (Choose two.)

- A. Digital
- B. Optical
- C. Analog
- D. CDMA

**Answer: A,C**

**QUESTION NO: 4**

Which statement correctly describes the keys witch model of deployment for call processing?

- A. All IP Phones are able to answer any incoming PSTN call on any line
- B. PSTN calls are routed through a receptionist or automated attendant.
- C. All IP Phones in the system have a single unique extension number.

**Answer: A**

#### QUESTION NO: 5

Which definition best describes the implementation service component within the implement phase?

- A. providing a step-by-step plan that details the installation and service commission tasks required in order to create a controlled implementation environment that emulates a customer network
- B. assessing the ability of site facilities to accommodate proposed infrastructure changes
- C. developing and executing proof-of-concept tests, validating high-level infrastructure design, and identifying any design enhancements
- D. Installing, configuring and integrating systems components based on an implementation plan developed in earlier phases
- E. improving a customer's infrastructure security system

**Answer: D**

#### QUESTION NO: 6

A customer with a small enterprise network of 15 remote sites is trying to optimize its VPN by migrating some remote sites using Frame Relay connections to the Internet to using cable connections to the Internet. Minimizing costs is one of the customer's highest priorities. Only a moderate amount of IP traffic is passing through the network, most of which is from the remote sites to the central site. IPSec should be used to provide VPN functionality and basic confidentiality is desired.

Based on the traffic patterns, which topology would be the easiest for this customer to set up and manage?

- A. full mesh
- B. partial mesh
- C. point-to-multipoint
- D. hub and spoke

**Answer: D**

**QUESTION NO: 7**

How can the proper configuration of Voice Mail be tested at an end user's IP phone?

- A. Press the "i" button.
- B. Press the "Settings" button.
- C. Press the "Services" button.
- D. Press the "Messages" button

**Answer: D**

**QUESTION NO: 8**

In what location is it recommended that the Cisco Catalyst 6500 Series WLSM be placed?

- A. distribution layer
- B. core layer
- C. access layer
- D. network management functional module

**Answer: A**

**QUESTION NO: 9**

Which of these is an accurate list of Cisco Lifecycle Services phases?

- A. initiation, planning, analysis, design, development, implementation, operations and maintenance
- B. project planning, site assessment, risk assessment, solution selection and acquisition, testing, and operations
- C. Prepare, plan design implement operate, and optimize
- D. analysis, design, deployment, testing, implementation, and production | E. presales, project planning, development, implementation, operations testing, and operations sign-off

**Answer: C**

**QUESTION NO: 10**

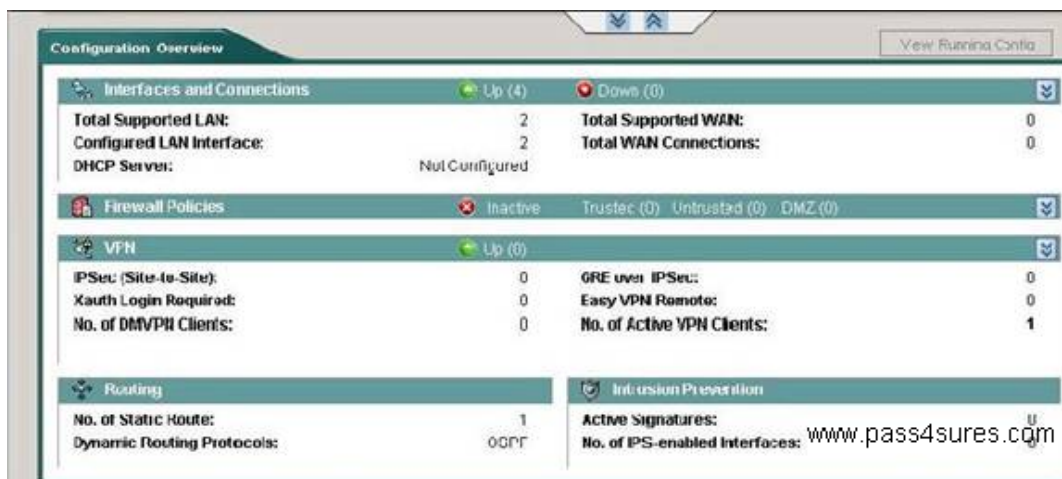
What port role assignment would you make for the Gigabit Ethernet port on the Cisco CE520 used in the Smart Business Communications System?

- A. IP Phone and desktop
- B. Cisco UC520
- C. Cisco CE520
- D. Cisco 871W

**Answer: B**

### QUESTION NO: 11

This item consists of one or more multiple choice type questions that you must answer. To answer these questions, you need to use a GUI tool that becomes fully accessible by the use of the labs you see below these directions. The tabs have up and down arrows to signal the direction that the tabbed window may be dragged to expose or hide the GUI tool. When you are done using the GUI tool, you may drag the tab down to continue answering questions. To advance to the next question in the series, click on the numbered button to the left of each question. Make sure that you have answered all the questions before continuing to the next item.



Which method list and method is used to authenticate the remote access VPN users? (Choose two.)

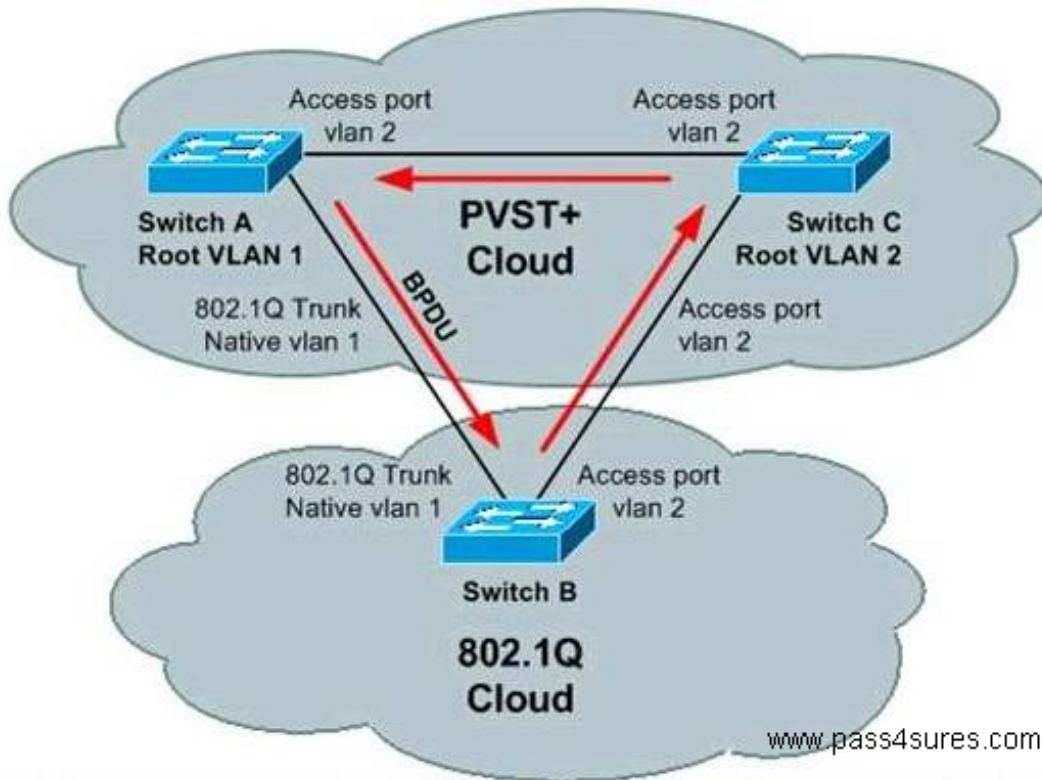
- A. sdm\_vpn\_xauth\_ml\_1
- B. sdm\_vpn\_group\_ml\_1
- C. SDM\_CMAP\_1
- D. local database on the ISR
- E. remote TACACS+ server
- F. remote Radius Server

**Answer: A,D**

### QUESTION NO: 12

Refer to the exhibit. Switches A and C are running PVST+ STP, and Switch B is running 802.1Q STP. If the BPDU of the root in VLAN 1 is better than the BPDU of the root in VLAN 2, then there is no blocking port in the VLAN topology. The BPDU of VLAN 2 never makes a "full circle" around the topology; it is replaced by the VLAN 1 BPDU on the B. C link, because B runs only one STP merged with VLAN 1 STP of PVST+. Thus, there is a forwarding loop.

What does PVST+ do to Answer: this?



A. Switch A sends PVST+ BPDUs of VLAN 2 (to the SSTP address that is flooded by Switch B) towards Switch C. Switch C will put port C.B into a type.inconsistent state, which prevents the loop.

B. Switch B sends PVST+ BPDUs of VLAN 1 (to the SSTP address that is flooded by Switch A) towards Switch C. Switch C will put port C.B into a type.inconsistent state, which prevents the loop.

c. Switch C sends PVST+ BPDUs of VLAN 2 (to the SSTP address that is flooded by Switch B) towards Switch C. Switch A will put port C.B into a type.inconsistent state, which prevents the loop.

D. Switch A sends PVST+ BPDUs of VLAN 1 (to the SSTP address that is flooded by Switch B) towards Switch B. Switch A will put port C.B into a type.inconsistent state, which prevents the loop.

Switch B sends PVST+ BPDUs of VLAN 1 (to the SSTP address that is flooded by Switch A) towards Switch C. Switch C will put port C.B into a type.inconsistent state, which prevents the loop.

c. Switch C sends PVST+ BPDUs of VLAN 2 (to the SSTP address that is flooded by Switch B) towards Switch C. Switch A will put port C.B into a type.inconsistent state, which prevents the loop.

D. Switch A sends PVST+ BPDUs of VLAN 1 (to the SSTP address that is flooded by Switch B)

towards Switch B. Switch A will put port C.B into a typE.inconsistent state, which prevents the loop.

**Answer: B**

### QUESTION NO: 13

Which interface on the Cisco UC520 is assigned an IP address either statically or through DHCP?

A. Switch B sends PVST+ BPDUs of VLAN 1 (to the SSTP address that is flooded by Switch A) towards Switch C. Switch C will put port C.B into a typE.inconsistent state, which prevents the loop.

c. Switch C sends PVST+ BPDUs of VLAN 2 (to the SSTP address that is flooded by Switch B) towards Switch C. Switch A will put port C.B into a typE.inconsistent state, which prevents the loop.

D. Switch A sends PVST+ BPDUs of VLAN 1 (to the SSTP address that is flooded by Switch B) towards Switch B. Switch A will put port C.B into a typE.inconsistent state, which prevents the loop.

Switch B sends PVST+ BPDUs of VLAN 1 (to the SSTP address that is flooded by Switch A) towards Switch C. Switch C will put port C.B into a typE.inconsistent state, which prevents the loop.

c. Switch C sends PVST+ BPDUs of VLAN 2 (to the SSTP address that is flooded by Switch B) towards Switch C. Switch A will put port C.B into a typE.inconsistent state, which prevents the loop.

D. Switch A sends PVST+ BPDUs of VLAN 1 (to the SSTP address that is flooded by Switch B) towards Switch B. Switch A will put port C.B into a typE.inconsistent state, which prevents the loop.

B. WAN interface

C. LAN interface

D. Switch port

E. PSTN Interface

**Answer: A**

### QUESTION NO: 14

Which benefit can be obtained by using the change management service component in the operate phase?

A. Reduced operating costs due to a consistent framework for making necessary changes in an efficient and accountable manner

- B. Greater accuracy, completeness, and timeliness of network configuration information
- C. Notification provided to interested parties regarding problems that have been identified, and a system that scales with customer requirements
- D. Improved system service quality and fewer disruptions

**Answer: A**

**QUESTION NO: 15**

What are two ways to test the LAN connectivity on the Cisco CE520? (Choose two.)

- A. Ping the IP address of the Cisco-Data Access VLAN from the Cisco UC520 console.
- B. Ping the IP address of the Cisco-Data VLAN from a device attached to the Cisco CE520
- C. Ping default gateway from the Cisco UC520.
- D. Ping the IP address of the Cisco-voice VLAN from a device attached to the Cisco CE520.
- E. Ping default gateway from the Cisco CE520.
- F. Ping the IP address of the Cisco-Distribution VLAN from the Cisco UC520 console.

**Answer: B,D**

**QUESTION NO: 16**

Which statement correctly describes configuration of the VPN server?

- A. It requires definition of a Group ID for remote clients.
- B. It requires configuration of port settings for the VPN server on the Cisco UC520.
- C. It uses a shared Key for remote device authentication
- D. The WAN interface is preselected.

**Answer: C**

**QUESTION NO: 17**

In a new Cisco UC520 installation, when must IP routing be configured?

- A. When the service provider assigns static IP information
- B. When the service provider assigns dynamic IP information.
- C. When analog PSTN trunks are used.
- D. When digital PSTN trunks are used.

**Answer: A**