

**Cisco 642-432**

**CISCO 642-432 Cisco Voice Over IP Exam (CVOICE)**

**Practice Test**

**Version 1.6**

**QUESTION NO: 1**

What does a gateway router match to a dialed number when setting up a VoIP call?

- A. IP route
- B. destination pattern
- C. session target
- D. call leg

**Answer: B**

**QUESTION NO: 2**

In T1 CAS, where are the signaling states and control features carried for Super Frame robbed-bit signaling?

- A. 6th, 12th, 18th, and 24th frame
- B. the first and sixteenth time slot
- C. the first and seventeenth time slot
- D. 6th and 12th frame

**Answer: D**

**QUESTION NO: 3**

A 9 digit number must be dialed to reach numbers on the PSTN. What process makes sure that the first digit 9 is not transmitted as part of the called number?

- A. digit seizing
- B. digit masking
- C. digit alternating
- D. digit manipulation

**Answer: D**

**QUESTION NO: 4**

Which statement is true about only out-of-band signaling?

- A. Signaling bits are sent in a special order in a dedicated signaling frame.
- B. All voice packets carry their own signaling.
- C. All signaling is directly associated with its corresponding voice frame.

D. A signaling bit is robbed from each frame.

**Answer: A**

### QUESTION NO: 5

Which command parameter specifies that the router should not attempt to initiate a trunk connection but should wait for an incoming call before establishing the trunk?

- A. ds0-group timeslots 1-23 type ext-sig
- B. voice-port 1/0:1
- C. codec clear-channel
- D. connection-trunk 404555 answer-mode

**Answer: D**

### QUESTION NO: 6

Which preference key word assigns top precedence to a dial peer in a hunt-group?

- A. 1
- B. high
- C. priority
- D. 0

**Answer: D**

### QUESTION NO: 7 DRAG DROP

Drop

Drag each of the dial peers on the left to the phone number that it would match on the right.

dial-peer voice 1 voip destination pattern .T session target ipv4:10.1.1.1	4081234
dial-peer voice 2 voip destination pattern 408[2-3]... session target ipv4:10.2.2.2	4081634
dial-peer voice 3 voip destination pattern 4081... session target ipv4:10.3.3.3	4181234
dial-peer voice 4 voip destination pattern 4081234 session target ipv4:10.4.4.4	4082234

www.pass4sures.com

**Answer:**

Drag each of the dial peers on the left to the phone number that it would match on the right.

dial-peer voice 1 voip destination pattern T session target ipv4:10.1.1.1	dial-peer voice 4 voip destination pattern 4081234 session target ipv4:10.4.4.4
dial-peer voice 2 voip destination pattern 408[2-3]... session target ipv4:10.2.2.2	dial-peer voice 3 voip destination pattern 4081... session target ipv4:10.3.3.3
dial-peer voice 3 voip destination pattern 4081... session target ipv4:10.3.3.3	dial-peer voice 1 voip destination pattern T session target ipv4:10.1.1.1
dial-peer voice 4 voip destination pattern 4081234 session target ipv4:10.4.4.4	dial-peer voice 2 voip destination pattern 408[2-3]... session target ipv4:10.2.2.2

www.pass4sures.com

**QUESTION NO: 8**

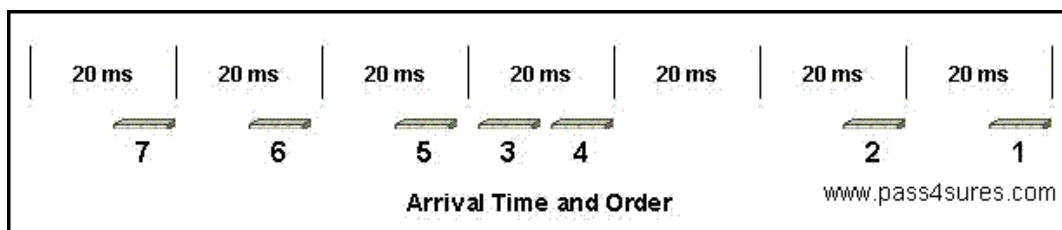
Which process changes an internal extension into a fully qualified external PSTN number before matching to a dial peer?

- A. digit masking
- B. forward digits
- C. number expansion
- D. prefix extension

**Answer: C**

**QUESTION NO: 9**

The illustration above shows the timing and order of arrival of voice packets at the end device. Each voice packet contains 20 ms of voice data. Assuming a play-out buffer of 20 ms, what will happen to voice packet number 3?



- A. Immediately moved to the front of the play-out buffer.
- B. It will be played out in the order it is received.
- C. It will be played out in its proper location.
- D. It will be dropped and treated as a lost packet.

**Answer: D**

**QUESTION NO: 10**

What is the E.164 numbering plan?

- A. the European PBX standard telephony number plan
- B. the IETF North American number plan
- C. a proprietary PBX number plan
- D. the ITU worldwide number plan

**Answer: D**

**QUESTION NO: 11**

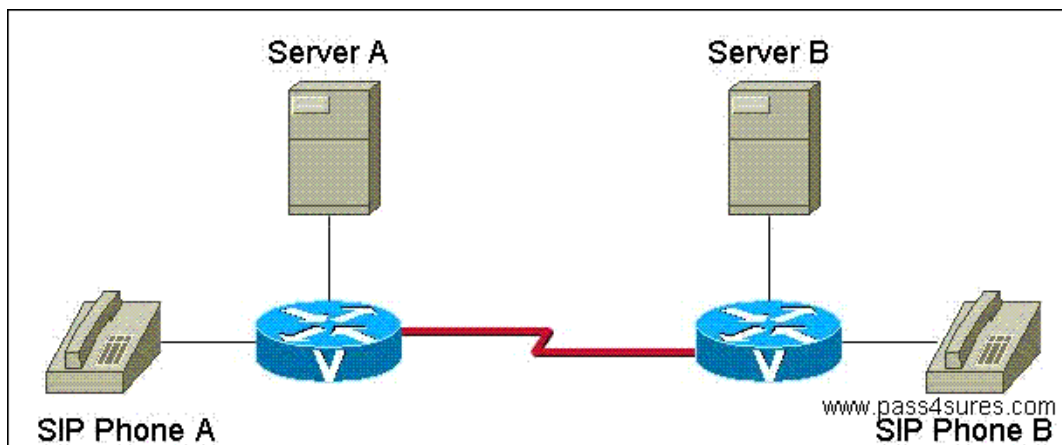
What are the three components in an MGCP environment? (Choose three.)

- A. call agent
- B. endpoint
- C. gateway
- D. proxy server
- E. gatekeeper

**Answer: A,B,C**

**QUESTION NO: 12**

To hide its identity when initiating calls, Phone B requests that Server B place its calls for it. What kind of device is Server B?



- A. redirect

- B. user agent server
- C. user agent client
- D. proxy
- E. registrar

**Answer: D**

**QUESTION NO: 13**

Which three are supervisory signals? (Choose three.)

- A. ring
- B. off hook
- C. call waiting
- D. busy
- E. on hook

**Answer: A,B,E**

**QUESTION NO: 14**

In North America, which E&M signaling type is used most often for geographically separated equipment?

- A. Type I
- B. Type IV
- C. Type V
- D. Type III
- E. Type II

**Answer: E**

**QUESTION NO: 15**

You have set up a complex dial plan using translation rules. The following translation rule has been configured. What output would correspond to the test translation-rule command?

```
translation-rule 1
rule 0 ^0.. 215550210
rule 1 ^1.. 215550211
rule 2 ^2.. 215550212
rule 3 ^3.. 215550213
```

rule 4 ^4.. 215550214  
rule 5 ^5.. 215550215  
rule 6 ^6.. 215550216  
rule 7 ^7.. 215550217  
rule 8 ^8.. 215550218  
rule 9 ^9.. 215550210

- A. test translation-rule 1 910  
The replaced number: 21555021910  
B. test translation-rule 1 617  
The replaced number: 61721555021  
C. test translation-rule 1 555  
The replaced number: 55521555021  
D. test translation-rule 1 512  
The replaced number: 21555021512

**Answer: D**

#### QUESTION NO: 16

Examine the following PBX system parameters:

The calling side seizes the line by going off-hook on its E-lead and sends information as DTMF digits.

The voice path is 4-wires, and the voice enabled router is in another building from the PBX.

Select the correct set of commands to allow communication between a voice enabled router and a PBX.

- A. voice port 1/0/0  
signal immediate-start  
operation 4-wire  
type 4  
B. voice-port 1/0/0  
signal delay-dial  
operation 4-wire  
type 1  
C. voice port 1/0/0  
signal wink-start  
operation 4-wire  
type 3