

Cisco 642-504

**642-504 Securing Networks with Cisco Routers and
Switches
Practice Test
Version 2.5**

QUESTION NO: 1

Which two technologies can secure the control plane of the Cisco router? (Choose two. r

- A. BPDU protection
- B. role-based access control
- C. routing protocol authentication
- D. CPPr

Answer: C,D

QUESTION NO: 2

Cisco Secure Access Control Server (ACS) is a highly scalable, high-performance access control server that provides a comprehensive identity networking solution. Which of these statements is correct regarding user setup on ACS 4.0?

- A. Users are assigned to the default group.
- B. A user can belong to more than one group.
- C. The username can contain characters such as "#" and "?".
- D. The settings at the group level override the settings configured at the user level

Answer: A

QUESTION NO: 3

Please study the exhibit carefully, and then answer the following question: .

About Your Router Host Name: isr2811

Hardware	More...	Software	More...
Model Type:	Cisco 2811	IOS Version:	12.4(15)T5
Available / Total Memory(MB):	87/256 MB	SDM Version:	2.4
Total Flash Capacity:	61 MB		

Feature Availability: IP [On] Firewall [On] VPN [On] IPS [On] NAC [On]

Configuration Overview View Running Config

Interfaces and Connections		VPN	
Total Supported LAN:	1	Total Supported WAN:	1(10/100Ethernet)
Configured LAN Interface:	1	Total WAN Connections:	1
DHCP Server:	Configured		
Firewall Policies:	Active		
IPSec (Site-to-Site):	0	GRE over IPSec:	0
Xauth Login Required:	0	Easy VPN Remote:	0
No. of DMVPN Clients:	0	No. of Active VPN Clients:	0
No. of Static Router:	0		
Dynamic Routing Protocols:	None		
		Total Active Signatures:	332
		No. of IPS-enabled Interfaces:	2
		Signature Version:	

www.pass4sures.com

VPN

Virtual Private Network

A Virtual Private Network (VPN) creates a secure connection over an insecure public network, such as the Internet. Traffic sent through a VPN is encrypted and it cannot be read by anyone who is not on the VPN.

VPN technologies include:

- *IPsec (site-to-site) VPN
- *GRE over IPsec
- *Dynamic Multipoint VPN
- *Easy VPN
- *Cisco SSL VPN

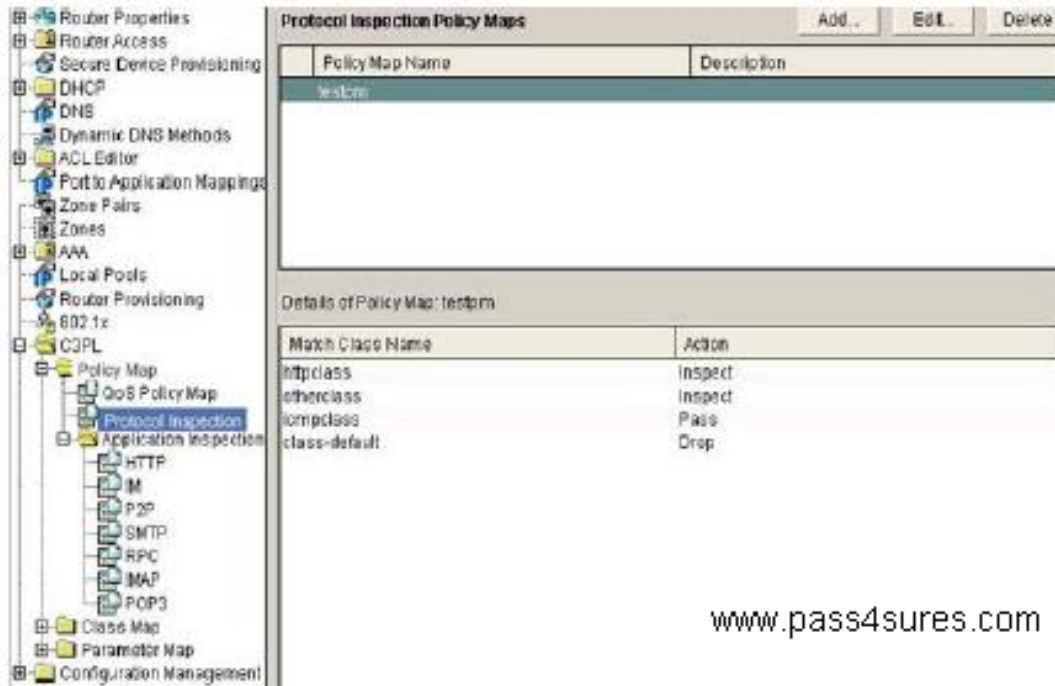
The VPN Design Guide can help you to decide which type of VPN to set up.

VPN Design Guide:

Click Launch Design Guide to begin.

Launch Design Guide

www.pass4sures.com



Policy Map Name	Description
testpm	

Match Class Name	Action
httpclass	inspect
etherclass	inspect
icmpclass	Pass
class-default	Drop

www.pass4sures.com

Refer to the appropriate SDM screen(s), which two statements correctly describe the Cisco IOS Zone-Based Firewall configuration? (Choose two)

- A. The "reset" action is applied to any HTTP request sourced from the "in" zone and destined to the "out" zone, which also has a request Uniform Resource Identifier (URI) that is greater than 500 bytes in length.
- B. The "inspect" action is applied to Internet Control Message Protocol (ICMP) traffic sourced from the "in" zone and destined to the "out" zone.
- C. The "http-policy" inspection policy map is applied to all HTTP and HTTPS traffic sourced from the "in" zone and destined to the "out" zone.
- D. The "testpm" inspection policy map is applied to the "in/out" zone-pair.

Answer: A,D

QUESTION NO: 4

Refer to the appropriate SDM screen(s), what is the User Datagram Protocol (UDP) idle time set for any HTTP traffic that is sourced from the "in" zone and destined to the "out" zone?

About Your Router
Host Name: isr2011



Cisco 2811

Hardware	Model	Software	Model
Model Type:	Cisco 2811	IOS Version:	12.4(15)T5
Available / Total Memory(MB):	87/256 MB	SDM Version:	2.4
Total Flash Capacity:	61 MB		

Configuration Overview View Running Config

Interfaces and Connections Up (2) Down (1)	
Total Supported LAN:	1
Configured LAN Interface:	1
DHCP Server:	Configured
Total Supported WAN:	1 (10/100Ethernet0)
Total WAN Connections:	1

Firewall Policies Active	
VPN Up (0)	
IPSec (Site-to-Site):	0
Auth Login Required:	0
No. of DMVPN Clients:	0
GRE over IPSec:	0
Easy VPN Remote:	0
No. of Active VPN Clients:	0

Routing		Intrusion Prevention	
No. of Static Route:	0	Total Active Signatures:	332
Dynamic Routing Protocols:	None	No. of IPS-enabled Interfaces:	0
		Signature Version:	9310.0

- VPN
- Site-to-Site VPN
- Easy VPN Remote
- Easy VPN Server
- Dynamic Multipoint VPN
- SSL VPN
- SSL VPN Gateways
- Packages
- VPN Components
- IPSec
- IPSec Policies (Crypto)
- Dynamic Crypto Maps
- IPSec Profiles
- Transform Sets
- IPSec Rules (ACLs)
- IKE
- IKE Policies
- Pre-shared Keys
- IKE Profiles
- Easy VPN Server
- Group Policies
- Browser Proxy Settings
- Public Key Infrastructure
- Certificate Authority
- Certificate Enrollment
- Router Certificates
- RSA Keys
- USB Tokens
- VPN Keys Encryption

Virtual Private Network

A Virtual Private Network (VPN) creates a secure connection over an insecure, public network, such as the Internet. Traffic sent through a VPN is encrypted and it cannot be read by anyone who is not on the VPN.

VPN technologies include:

- *IPsec (site-to-site) VPN
- *GRE over IPsec
- *Dynamic Multipoint VPN
- *Easy VPN
- *Cisco SSL VPN

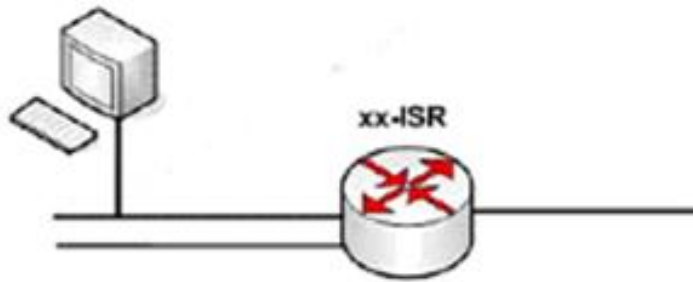
The VPN Design Guide can help you to decide which type of VPN to set up.

VPN Design Guide



Click Launch Design Guide to begin.

[Launch Design Guide...](#)

Management PC used to access SDM

www.pass4sures.com

Small Office or Home Office

Results of "show running-config"

```
ip http secure-server
ip http timeout-policy idle 60 life 86400 requests 10000
ip nat inside source list 1 interface FastEthernet0/1 overload
ip nat inside source static tcp 172.16.1.10 23 interface FastEthernet0/1 23
!
```

```
access-list 1 permit 172.16.1.0 0.0.0.255
access-list 23 permit host 172.16.1.11
access-list 23 permit host 172.16.1.13
!
```

```
control-plane
!
```

www.pass4sures.com

Parameter Map

Inspect Settings Parameter Maps

Parameter Map Name	Value
httpmap	10

Details of Parameter Map: httpmap

Item Name	Item Value
Alert	0m
AuthTime	0m
TCP Synwait Timeout	30
TCP Finwait Timeout	30
TCP Idle Timeout	3000
UDP Idle Timeout	30
DNS Timeout	30
ICMP Idle Timeout	5

HTTP Protocol Application Service Groups

Class Map Name	Used By
httpmap	httpmap

Details of Class Map: httpmap

Item Name	Item Value
Request	
Req-Message-URI	Disabled
Req-URI	Length > 500
Response	
Req-Header	
Response-Header	Disabled

www.pass4sures.com

Protocol Inspection Policy Maps

Policy Map Name	Description
testpm	

Details of Policy Map: testpm

Match Class Name	Action
httpclass	Inspect
otherclass	Inspect
icmpclass	Pass
class-default	Drop

www.pass4sures.com

- A. 10 seconds
- B. 15 seconds
- C. 30 seconds

D. 35 seconds

Answer: D

QUESTION NO: 5

Refer to the appropriate SDM screen(s), what is the reason that outside hosts can't initiate Telnet (port 23) traffic to the 172.16.1.10 inside host?

The image shows two screenshots from the Cisco SDM interface. The top screenshot, 'About Your Router', displays hardware and software details for a Cisco 2811 router. The bottom screenshot, 'Configuration Overview', shows various system settings.

Hardware		Software	
Model Type:	Cisco 2811	IOS Version:	12.4(15)T5
Available / Total Memory(MB):	87/256 MB	SDM Version:	2.4
Total Flash Capacity:	61 MB		

Interfaces and Connections		Firewall Policies	
Total Supported LAN:	1	Firewall Policies:	Active
Configured LAN Interface:	1		
DHCP Server:	Configured		

VPN		Intrusion Prevention	
IPSec (Site-to-Site):	0	Total Active Signatures:	332
Xauth Login Required:	0	No. of IPS-enabled Interfaces:	3
No. of DMVPN Clients:	0	Signature Version:	6.3(1)0

The image shows the 'VPN' configuration screen in Cisco SDM. It includes a tree view on the left and a main content area with a 'VPN Design Guide' button.

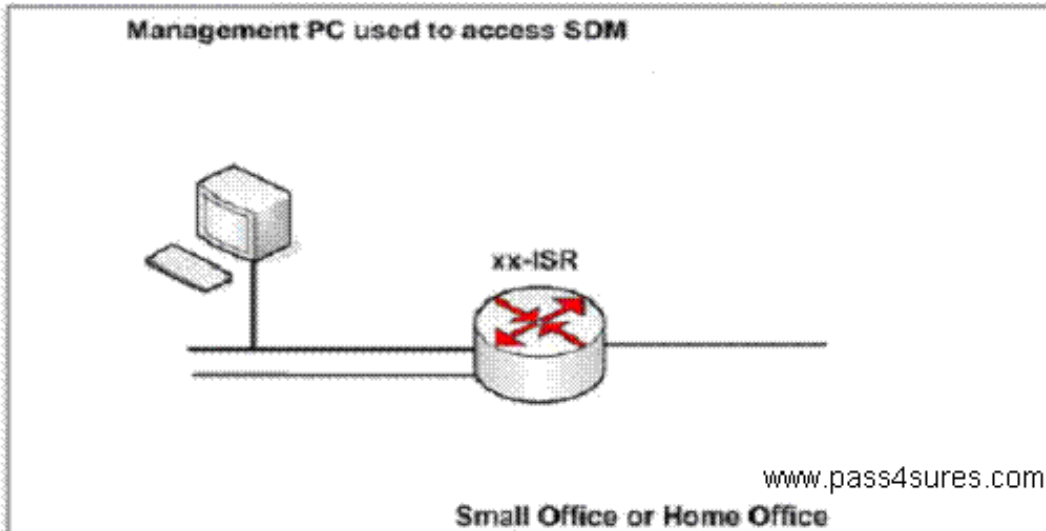
Virtual Private Network
A Virtual Private Network (VPN) creates a secure connection over an insecure, public network, such as the Internet. Traffic sent through a VPN is encrypted and it cannot be read by anyone who is not on the VPN.

VPN technologies include:

- *IPsec (site-to-site) VPN
- *GRE over IPsec
- *Dynamic Multipoint VPN
- *Easy VPN
- *Cisco SSL VPN

The VPN Design Guide can help you to decide which type of VPN to set up.

VPN Design Guide
Click Launch Design Guide to begin.
Launch Design Guide...



V

Results of "show running-config"

```

ip http secure-server
ip http timeout-policy idle 60 life 86400 requests 10000
ip nat inside source list 1 interface FastEthernet0/1 overload
ip nat inside source static tcp 172.16.1.10 23 interface FastEthernet0/1 23

access-list 1 permit 172.16.1.0 0.0.0.255
access-list 23 permit host 172.16.1.11
access-list 23 permit host 172.16.1.13
    
```

control-plane

- Router Properties
- Router Access
- Secure Device Provisioning
- OSPF
- Dynamic DNS Methods
- ACL Editor
- Port to Application Mapping
- Router Redundancy
- SD-WAN
- AAA
- Local Pools
- Router Redundancy
- SD-WAN
- CSPL
- Policy Map
- Class Map
- Platform Tools**
 - Inspect
 - Process Flow
 - URL Filtering
 - Regular Expressions
- Configuration Management

Forwarder Map

Inspect Settings Forwarder Map

Parameter Map Name	Used By
172.16.1	172.16.1

Default v1 Parameters Map Information

Item Name	Item Value
Alert	On
Account	100
TCP Deny wait timeout	30
TCP Forward timeout	10
TCP idle timeout	3000
TCP idle timeout	30
DNS timeout	10
ICMP idle timeout	5

www.pass4sures.com