

Microsoft 70-089

**Microsoft 70-089 Planning, Deploying, and Managing
Microsoft Systems Management Server 2003
Practice Test
Version 2.2**

QUESTION NO: 1

You are the SMS administrator for your company. The network consists of a single Active Directory domain.

You create a report that displays hardware and software configurations for each SMS client computer. You need to ensure that help desk technicians can access this report.

You need to set up access to this report only for the group named Help Desk in the domain.

Which two actions should you perform? (Each correct answer presents part of the solution. Choose two.)

- A. Add Read access to the Help Desk group in the Class security rights section of the Security Properties for the report.
- B. Add the Help Desk group to the Users local group on the site server.
- C. Add the Help Desk group to the SMS Admins local group on the site server.
- D. Add Read access to the Help Desk group in the Instance security rights section of the Security Properties for the report.
- E. Add the Help Desk group to the SMS Reporting Users local group on the site server.

Answer: D,E

Explanation:

The Help Desk group has to be a member of the SMS Reporting User local group to be able to access the reports and in addition to this the group also has to be added to the Instance security rights section of the Security Properties of the report to be able to see the contents of the report. If you add the Help Desk group in the Class security rights section of the Security Properties of the report the Help Desk group will have access to all reports.

QUESTION NO: 2

You are the SMS administrator for your company. The company has two offices. One office is installed as a primary site. The other office is installed as a secondary site.

The secondary site contains Advanced Clients. You discover that some of these clients run advertised programs from the distribution point in the primary site rather than from the local distribution point.

You need to ensure that these computers run advertised programs from the local distribution point.

What are two possible ways to achieve the goal? (Each correct answer presents a complete solution. Choose two.)

- A. Add the primary site's site boundary to the secondary site's roaming boundaries.
- B. Remove the secondary site's site boundary from the primary site's roaming boundaries.
- C. Remove the secondary site's site boundary from the primary site's site boundary.
- D. Add the primary site's site boundary to the secondary site's site boundary.

Answer: B,C

Explanation:

Removing the secondary site's boundary from the primary site's roaming boundaries would prevent all clients from the secondary site to use the primary site's distribution point as a remote distribution point. It is not a good practice to have multiple sites sharing common boundaries. It is perfectly fine to have multiple sites in the same domain, but you should not have multiple sites sharing a common boundary. That makes it hard to isolate your clients to a specific SMS site.

QUESTION NO: 3

You are the SMS administrator for your company. The SMS hierarchy consists of a primary central site and two primary child sites below the central site. There are two secondary child sites below each primary child site. The SMS Backup Task is enabled to run once a week for the central primary site only.

Two days after the last backup, the SMS Executive service in one of the primary child sites stops running. You cannot recover the site by performing a site reset.

You need to recover the SMS site server for the primary child site. You want to achieve this goal by using the least amount of administrative effort.

What should you do?

- A. Run the Repair Site Wizard to recover the primary child site without using the backup files.
- B. Restore the backup files to the primary central site.
- C. Reinstall SMS on the failed primary child site server and reconfigure the site as a child of the primary central site.
- D. Run the Repair Site Wizard to recover the primary child site from backup files.

Answer: A

Explanation:

Use the SMS Site Repair Wizard to recover data from parent and child primary reference sites without the need of any backup files. For more information about the SMS Site Repair Wizard, see "Appendix F: Recovery and Repair Tools" in Scenarios and Procedures for Microsoft Systems Management Server 2003:Backup, Recovery and Maintenance on the Microsoft Download site.

QUESTION NO: 4

You are the SMS administrator for your company. The SMS hierarchy consists of a central site named London and two primary child sites named Paris and Dublin. Both primary child sites are directly below London in the SMS hierarchy. The boundaries of all SMS sites are correctly configured. The SMS Advanced Client is installed on all computers.

When you test the roaming feature, you observe that SMS Advanced Clients from London are able to access packages in the Dublin site and in the Paris site. However, the SMS Advanced Clients from Dublin and Paris cannot access packages in other SMS sites in the hierarchy.

You need to ensure that SMS Advanced Clients from Dublin and Paris can roam to any SMS site.

What should you do?

- A. Configure the roaming boundary in Dublin and Paris to set London as a remote roaming boundary.
- B. Add entries that point to the management points for Dublin and Paris to the WINS servers in all sites.
- C. Allow SMS to publish data to Active Directory.
- D. Add proxy management points for Dublin and Paris in every SMS site.

Answer: C

Explanation:

You need to extend the Active Directory schema if: You want to use global roaming for Advanced Clients. You want to use the most secure method available for authenticating management points to Advanced Clients. You want to use automatic key exchange for secure site-to-site communications. You want clients to automatically detect the server locator points and management points without requiring Windows Internet Name Services (WINS). If you do not extend the schema, WINS is required for automatic site assignment, roaming and selection of a local management point.

QUESTION NO: 5

You are the SMS administrator for your company. You use SMS 2003 SP1 and the Security Update Inventory Tool for patch management. The Security Update Inventory Tool is installed and configured with the default settings.

A new set of updates is available.

You need to identify which computers are not compliant with a specific update. You want to achieve this goal by using the least amount of administrative effort.

What should you do?

- A. View Resource Explorer for each computer to identify applicable updates.
- B. Run the Computers where a specific software update is applicable report to find the computers that need the updates.
- C. Create a query that selects computers that need the updates.
- D. View the Software Updates container of the SMS Administrator console to find the computers that need the updates.

Answer: B

Explanation:

The easiest way to identify the computers that need a specific update is by opening the predefined report Computers where a specific software update is applicable and specifying the title of the update, collection where to look and what type of scan (Extended MBSA and Microsoft Updates).

QUESTION NO: 6

You are the SMS administrator for your company. All servers run Microsoft Windows Server 2003. All desktop computers run Windows XP Professional.

You want to install the SMS Advanced Client on all computers on the network. You use the Client Push Installation Wizard to install the SMS client software on the computers.

You discover that some of the computers failed to install the SMS client.

You need to identify the cause of the problem.

Which three log files could you examine on both the SMS client and the SMS site server? (Each correct answer presents a complete solution. Choose three.)

- A. Ccmsetup.log
- B. Ccm.log
- C. Ddm.log
- D. Smsexec.log
- E. Cidm.log
- F. Client.msi.log

Answer: A,B,F

Explanation:

Ccm.log (Server side): Search for computer name and make sure no errors are in this log associated with the computer the client is being installed on. Seeing 'Unable to retrieve' or 'could not retrieve' here is normal. This is when the server verified that the client is not already installed.

Ccmsetup.log (client side): Logs when Management Point is identified, client.msi is downloaded, when the installation starts and completes.

Client.msi.log (client side): Logs any errors during install. Search for "return value 3" to find the actual error.

QUESTION NO: 7

You are the SMS administrator for your company. All servers run Microsoft Windows Server 2003. Desktop computers run Windows XP Professional or Windows NT Server 4.0. Your SMS 2003 site hierarchy consists of a single primary site. Your site server is configured as a management point, client access point, server locator point, and distribution point.

You want to install an application on all computers. Installing this application requires administrative rights. You create an advertisement with a mandatory assignment to install this application. You discover that all of the computers that run Windows NT Server 4.0 fail to run the advertisement.

You need to ensure that computers running Windows NT Server 4.0 can run the advertisement. You want to achieve this goal by using the least amount of administrative effort.

What should you do?

- A. Configure an Advanced Client Network Access account.
- B. Configure the SMS Service Account with administrative privileges on all Windows NT Server 4.0 computers.
- C. Instruct users to log on to their computers using the local Administrator account.
- D. Configure a Legacy Client Software Installation account.

Answer: D**Explanation:**

When a user at a Legacy Client runs an advertised program locally, that program has the potential to run under two user contexts. Unless otherwise specified, the program runs under the logged-on user's context. If this user account does not have sufficient privileges to install software on the client, configure the program to run with administrative credentials by using the Legacy Client Software Installation account. You can specify the Legacy Client Software Installation Account by navigating in the SMS Administrator console tree to Site Settings , pointing to Component Configuration , and then clicking Software Distribution . Then, for programs that require this

account, configure the program by selecting its Properties dialog box, clicking the Environment tab, and then clicking Use Software Installation Account .

QUESTION NO: 8

You are the SMS administrator for your company. The SMS 2003 site hierarchy consists of a single primary site. The SMS site server is configured as a management point, client access point, server locator point, and distribution point.

The hardware on the management point must be replaced. You need to transfer the management point role to a different server. The only computer available for this purpose runs Microsoft Windows NT Server 4.0 SP4.

You need to prepare this computer to be a management point.

What should you do?

- A. Install SP6 for Windows NT Server 4.0 and IIS
- B. Install Windows 2000 Server SP3 and IIS.
- C. Install Windows 2000 Server SP2.
- D. Install Windows Server 2003 with the default settings.

Answer: B

Explanation:

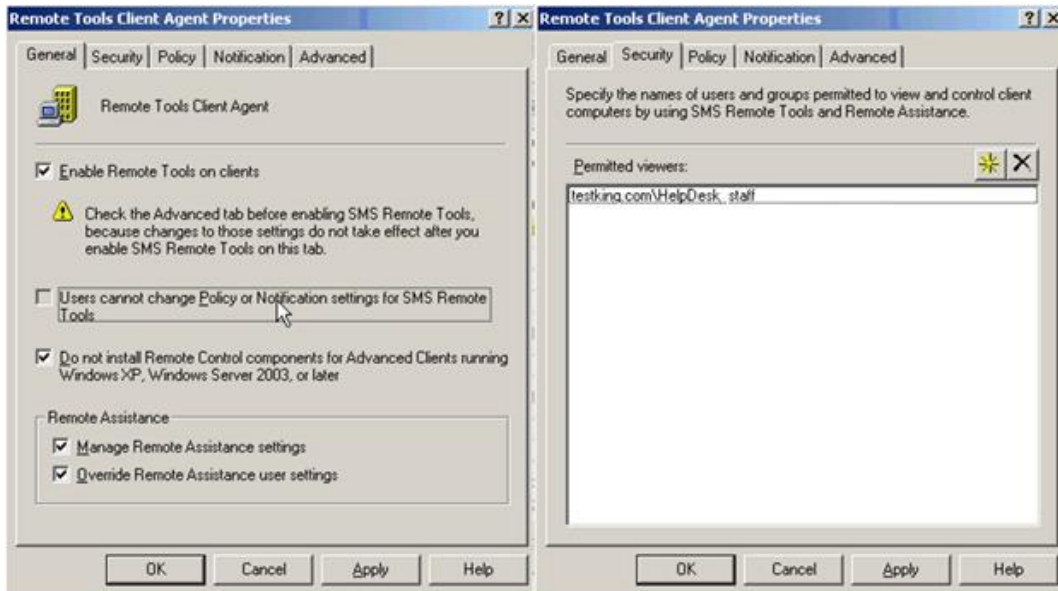
System Management Server 2003 system requirements: Microsoft Windows Server 2003 (Standard, Enterprise or Datacenter Edition) or Windows 2000 Server SP2 (Standard, Advanced or Datacenter Edition). Distribution points, Management points and Reporting points also require that Internet Information Services (IIS) is installed as part of the Windows Server installation.

QUESTION NO: 9

You are the SMS administrator for your company. The SMS 2003 site hierarchy consists of a single primary site. Servers run Microsoft Windows Server 2003. Desktop computers run Windows XP Professional.

Users who are members of a group named Help Desk want to access computers remotely.

The Remote Tools Client Agent is configured as shown in the exhibit.



Users in the Help Desk group have full access rights on the Remote Assistance tool and SMS Remote Tools. All SMS client computers use the default settings for the Remote Desktop service.

You need to instruct the users in the Help Desk group how to access computers remotely.

What should you instruct them to do?

- A. In the SMS Administrator console, start Windows Diagnostics.
- B. In the SMS Administrator console, start Remote Assistance.
- C. In the SMS Administrator console, start Remote Tools.
- D. In the SMS Administrator console, start Remote Desktop Client.

Answer: B

Explanation:

The Remote Assistance and Terminal Services features, which are available in the applicable Windows operating systems of clients, are integrated into the SMS 2003 Administrator console. This provides you with more options for remotely assisting clients from within the SMS Administrator console.

QUESTION NO: 10

You are the SMS administrator for your company. The SMS 2003 site hierarchy consists of a primary central site and a secondary child site. The two sites are linked by a 64-Kbps connection.

The status of the SMS_HIERARCHY_MANAGER component and the SMS_LAN_SENDER component both display as Critical. You discover that the available bandwidth is insufficient. It will take two weeks to acquire a new connection.

You need to ensure that the status for the SMS_HIERARCHY_MANAGER and the

SMS_LAN_SENDER components are not set to Critical or Warning.

What are two possible ways to achieve the goal? (Each correct answer presents a complete solution. Choose two.)

- A. Configure the address rate limit to use 25 percent of the available bandwidth.
- B. Create Status Filter Rules to track messages for each component, and clear the Replicate to parent site check box.
- C. Change the Warning threshold and Critical threshold for warning messages and error messages for the two components to the maximum possible value in the Component Status Summarizer for the SMS site.
- D. Create Status Filter Rules to track messages for each component, and select the Do not forward to status summarizer check box.

Answer: C,D

Explanation:

You view the thresholds for a component by right-clicking a component in the details pane and clicking Properties. The Status Threshold Properties dialog box specifies Warning and Critical thresholds for Error, Warning, and Informational status messages and the Threshold period. The threshold period specifies the period of time for which the thresholds are evaluated. For example, if the threshold period is Since 8:00:00 AM and the Informational messages threshold is set to 100 for Warning and 200 for Critical, then the component's status indicator is set to Warning whenever the component has reported between 100 and 199 Informational status messages since 8:00:00 A.M. on any given day. The component's status indicator is set to Critical whenever the component reports 200 or more Informational status messages.

The "Do not forward to status summarizer" specifies that each time a status message matches this rule, the Status Manager should not forward a copy of this status message to any status summarizer components. You use this option to throw away messages that are flooding the system. For example, if a server component reports a particular Error status message every 10 seconds that is not relevant for your site, that error is not tallied by the Component Status Summarizer. A long series of these errors in a short time causes the Critical Threshold to be exceeded, and the component is flagged as Critical in the Component Status summary display. You can set up a filter rule to prevent a particular Error status message from being forwarded to the Component Status Summarizer, which prevents the threshold from being exceeded and the component being marked as Critical.

QUESTION NO: 11

You are the SMS administrator for your company. All desktop computers run Microsoft Windows XP Professional. The SMS 2003 Advanced Client is installed on all the computers on the network.

You create a package and distribute it to all distribution points. You configure a mandatory advertisement to target all Advanced Clients within the site.

You need to verify if a specific SMS client computer executed the advertisement.

Which three resources should you use? (Each correct answer presents part of the solution. Choose three.)

- A. Policy Spy tool (PolicySpy.exe)
- B. Advanced Client Spy tool (CliSpy.exe)
- C. Client.msi.log
- D. ExecMgr.log
- E. Status Messages
- F. Software Updates node

Answer: B,D,E

QUESTION NO: 12

You are the SMS administrator for your company. You use SMS 2003 SP1 and the Security Update Inventory Tool for patch management. The Security Update Inventory Tool is installed and configured with the default settings. The package created by the tool is named Security.

You test the patch management process. You are running the Security advertisement on a single test computer named Computer1. You discover that there is a long delay before SMS displays the software update information.

You need to ensure that the software update data is sent to the SMS server as soon as the Security advertisement finishes running. You want to achieve this goal by using the least amount of administrative effort.

What should you do?

- A. Force a software inventory cycle from Computer1 after running the Security advertisement.
- B. Change the Security advertisement to run the Security (expedited) program.
- C. Create a new package with a script that forces a software inventory cycle to run on Computer1.
- D. Force a hardware inventory cycle from Computer1 after running the Security advertisement.

Answer: B

Explanation:

Using the expedited program will cause a full hardware inventory cycle and may cause serious network and performance issues. This method is recommended for a small collection of reference