

Microsoft 70-621

**Microsoft 70-621 Pro: Upgrading Your MCDST Cert to
MCITP Enterprise Support
Practice Test
Version 1.1**

QUESTION NO: 1

You need to reduce the level of access that a malicious Web site might have to your computer.

What should you do?

- A. Start a Windows Defender scan.
- B. Confirm that Microsoft Windows Internet Explorer Protected Mode is enabled on the Internet security zone.
- C. Enable Microsoft Windows Internet Explorer Phishing Filter.
- D. Enable Microsoft Windows Internet Explorer Pop-up Blocker.

Answer: B

QUESTION NO: 2

You need to remove any Microsoft Windows Internet Explorer 7 add-ons in Microsoft Windows Vista computers that do not have prior approval from the following authorities:

Microsoft
System manufacturer
Service provider

What should you do?

- A. Remove any add-ons that are not found in the list of downloaded ActiveX controls.
- B. Remove any add-ons that are not found in the list of add-ons that are at present loaded in Windows Internet Explorer 7.
- C. Remove any add-ons that are not found in the list of add-ons used by Windows Internet Explorer 7.
- D. Remove any add-ons that are not found in the list of add-ons that run without requiring permission.

Answer: D

QUESTION NO: 3

You are a desktop support technician for your company. The corporate network has a domain controller that runs Microsoft Windows Server 2003 and computers that run Microsoft Windows XP Professional and Windows Vista Business. You set up group policies on the domain controller.

When you log on to the corporate network, only the computers that run Windows Vista Business

are able to retrieve the updated policies.

You need to process the group policy for all the computers on the corporate network.

Which Internet Control Message Protocol (ICMP) setting should you enable?

- A. Allow outgoing parameter problem
- B. Allow outgoing source quench
- C. Allow incoming echo request
- D. Allow incoming mask request

Answer: C

QUESTION NO: 4

Your data recovery strategy must meet the following requirements:

Back up all data files and folders in C:\Data.

Restore individual files and folders in C:\Data.

Ensure that data is backed up to and restored from external media.

What should you do?

- A. Use the Backup and Restore Center to back up and restore files.
- B. Use the Previous Versions feature to restore the files and folders.
- C. Use the NTBackup utility to back up and restore individual files and folders.
- D. Use the System Restore feature to perform backup and restore operations.

Answer: A

QUESTION NO: 5

Your computer connects to both an ad hoc wireless network and a wired network.

You need to allow other wireless clients to access the wired network.

What should you do?

- A. Configure the wired and wireless network adapters as a network bridge.
- B. Set the security type to the No authentication (Open) option.

- C. On each wireless client, set the Service Set Identifier (SSID) for a new wireless network to the name of your wired network adapter.
- D. Modify the wireless network profile type to the Use all-user profiles only (recommended) option.

Answer: A

QUESTION NO: 6

You are a desktop support technician for your company. The computers in your company run Windows Vista.

Users often require assistance in resetting their passwords.

You need to ensure that users can reset their passwords without assistance. Your solution must not compromise password security.

What should you do?

- A. Create a password-reset disk on the USB drive.
- B. Disable the password complexity feature in the local security policy.
- C. Maintain a text file with a list of all user logon names and passwords.
- D. Set the password length option to zero.

Answer: A

QUESTION NO: 7

You are a desktop support technician for your company.

The computers in your company run Windows XP. You upgrade the computers to Windows Vista. You download new updates by using Windows Update Agent. You discover that the update files are corrupted.

You need to force Windows Update Agent to download the entire update again.

What should you do?

- A. Stop the Windows Update service and rename the C:\Program Files\WindowsUpdate folder. Then, restart the Windows Update service.
- B. Run the wuauclt.exe /detectnow command.
- C. Run the wuauclt.exe /resetauthorization /detectnow command.

D. Stop the Windows Update service and rename the %systemroot%\SoftwareDistribution folder. Then, restart the Windows Update service.

Answer: D

QUESTION NO: 8

You run a Windows Defender scan on your computer. You notice a valid program listed in Quarantined Items.

You need to use this program on your computer.

What should you do?

- A. Remove the program from the Quarantined Items list.
- B. Restore the program from the Quarantined Items list.
- C. Repair the program from the Programs option in Control Panel.
- D. Reinstall the application to another location.

Answer: B

QUESTION NO: 9

You install Microsoft Windows Vista on a new computer. The computer has the following hardware configuration:

- 2.4-GHz processor
- 2 GB of RAM
- 512-MB video adapter
- 250-GB hard disk.

You are unable to view the following features of Windows Vista:

- Thumbnails
- Previews on folders
- Transparent glass.

You need to be able to view the advanced visual features of Windows Vista.

What should you do?

- A. Press the WINDOWS key and the TAB key simultaneously.

- B. Press the ALT key and the TAB key simultaneously.
- C. Configure the system properties to optimize for best appearance.
- D. Configure the system properties to optimize for applications.

Answer: C

QUESTION NO: 10

You use two user accounts for your computer: standard user and administrator. You log on to your computer as standard user but are unable to make advanced configuration changes.

You need to make advanced configuration changes while you are logged on as a standard user.

What should you do?

- A. Configure the User Account Control: Behavior of the elevation prompt for standard users setting to the Prompt for credentials option.
- B. Configure the User Account Control: Behavior of the elevation prompt for administrators in Admin Approval Mode setting to the Prompt for consent option.
- C. Disable the User Account Control: Only elevate executables that are signed and validated option.
- D. Enable the User Account Control: Only elevate executables that are signed and validated option.

Answer: A

QUESTION NO: 11

You are a desktop support technician for your company. The computers in your company run Windows Vista.

Your company has a main office and a branch office. You manage the computers at the branch office. The IT manager at the main office provides you with a custom security template.

You need to compare the current security policy of the branch office computers with the custom security template.

What should you do?

- A. Run the Security Configuration and Analysis tool to create a new database and analyze the computers.

- B. Runseccedit /validate /cfg followed by the file name of the custom security template.
- C. Save the custom security template and run the Resultant Set of Policy tool in logging mode.
- D. Save the custom security template and run gpupdate /force /target:computer.

Answer: A

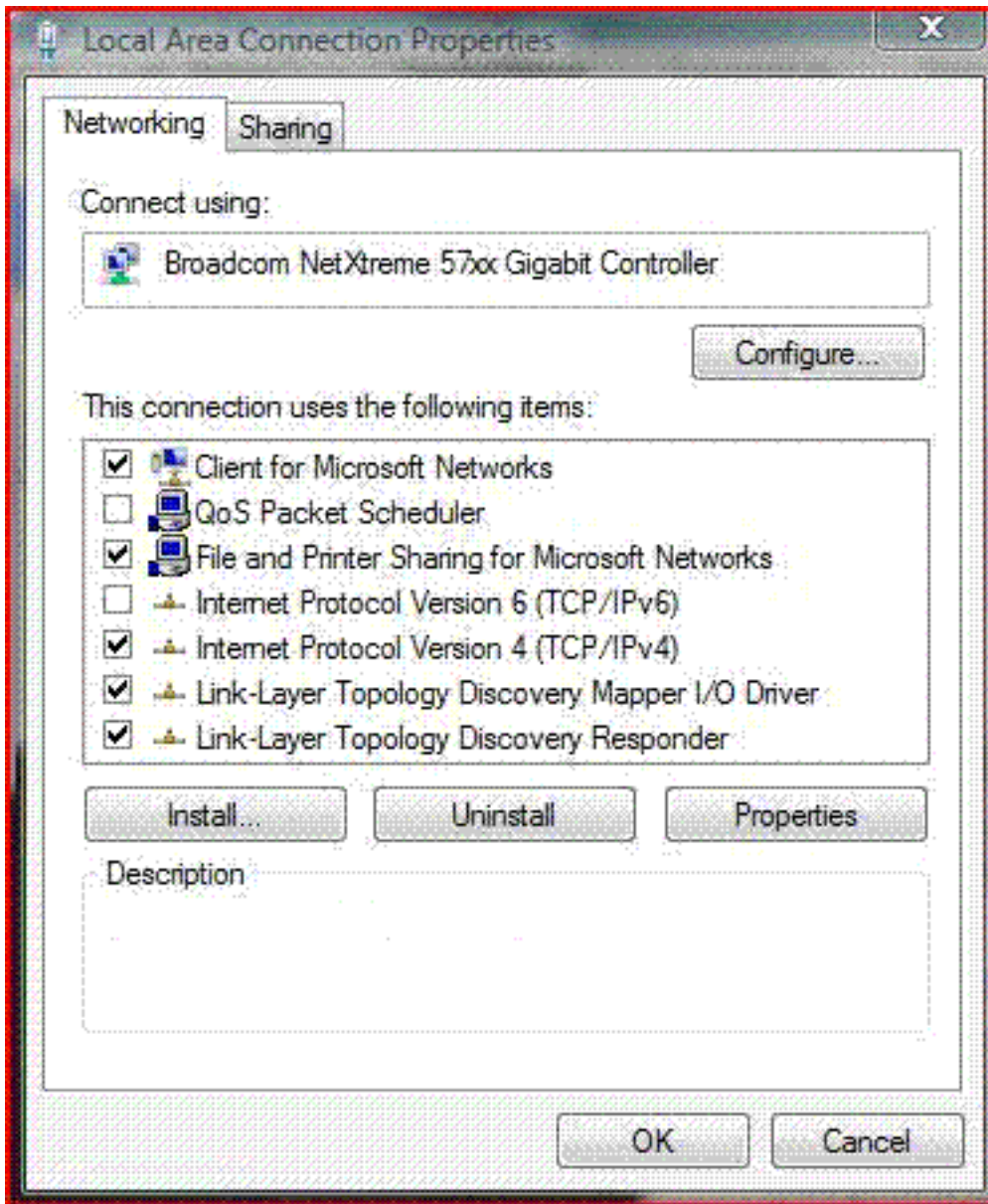
QUESTION NO: 12

You are a desktop support technician for your company. The computers in your company run Windows Vista.

All the computers must authenticate to the wired network by using 802.1x authentication. The properties of the Local Area Connection are as shown in the exhibit. (Click the Exhibit button.)

You need to configure a computer to meet the requirements.

What should you do?



- A. Configure Microsoft Windows Firewall to allow 802.1x authentication.
- B. Start the WiredAutoConfig service.
- C. Select the Internet Protocol Version 6 (TCP/IPv6) option.
- D. Obtain a computer certificate and install it on the computer.

Answer: B

QUESTION NO: 13

Your computer connects to both an ad hoc wireless network and a wired network.

You need to allow other wireless clients to access the wired network.

What should you do?

- A. Set the security type to the No authentication (Open) option.
- B. Modify the wireless network profile type to the Use all-user profiles only (recommended) option.
- C. Configure the wired and wireless network adapters as a network bridge.
- D. On each wireless client, set the Service Set Identifier (SSID) for a new wireless network to the name of your wired network adapter.

Answer: C

QUESTION NO: 14

You are a desktop support technician for your company. The computers in your company run Windows Vista.

The company has a main office and a branch office. The offices have multiple computers in a workgroup environment. Domain servers are not available. You want to log all critical events to a member server at the main office.

You need to create a Normal mode (Pull) subscription for all critical event warnings generated by the computers at the branch office and forward it to the server at the main office.

What should you do first?

- A. Add the Event Log Readers group to the standard user account where the event logs are forwarded.
- B. Create a Virtual Private Network (VPN) between the main office and the branch office.
- C. Start the Windows Event Collector service.
- D. Enable event forwarding by migrating to the domain environment.

Answer: C

QUESTION NO: 15

You configure Microsoft Internet Explorer 7 with a Really Simple Syndication (RSS) subscription to MSN Entertainment on your computer.

Your RSS subscription Web page fails to show the information that the RSS feed Web page displays from MSN Entertainment.

You need to ensure that Internet Explorer displays the current content from the RSS feed.

What should you do?

- A. Configure the RSS feed properties to use the minimum interval value.
- B. Configure the RSS feed properties to automatically download attached files.
- C. Enable the feed reading view in the RSS feed settings.
- D. Configure the RSS feed properties to keep only the most recent 50 items.

Answer: A

QUESTION NO: 16

You are a desktop support technician for your company.

You implement a two-factor authentication scheme on the computer that runs Windows Vista.

You need to ensure that the two-factor authentication scheme is the only way to log on to the computer.

What should you do?

- A. Set the Secondary logon service startup type to Automatic and configure the service to start under the context of your user account.
- B. Select the Interactive logon: Require smart card option in the local security policy.
- C. Set the Smart Card service startup type to Manual and configure the service to start under the context of your user account.
- D. Set the Interactive logon: Number of previous logons to cache (in case domain controller is not available) option to 0.

Answer: B

QUESTION NO: 17

Your computer runs Microsoft Windows XP Professional. The computer also runs 20 third-party applications. You plan to upgrade your computer to Microsoft Windows Vista.

The functionality of the existing 20 applications must be maintained even after you upgrade your computer.

You need to ascertain whether the hardware and software on the Windows XP Professional computer will support the upgrade.

What should you do?