

Microsoft

Exam 70-688

Managing and Maintaining Windows 8.1

Version: 13.0

[Total Questions: 231]

Question No : 1

Your network contains an Active Directory domain and a subscription to Microsoft Office 365.

Users discover that they must change their Active Directory password more frequently than their Office 365 password.

You need to ensure that the password policies for Office 365 and for Active Directory are the same.

What should you do?

- A. From the Office 365 portal, under Subscriptions, click Manage.
- B. From the Windows Azure Active Directory Module for Windows PowerShell, run Set-MsolUserPassword.
- C. From the Office 365 portal, under Management, click Users.
- D. From the Office 365 portal, under Management, click Domains.

Answer: C

Explanation: In the Office 365 portal, click Admin > Users (under Management in the navigation pane). On the Users page, select a user, and then click Edit.

Note:

* Some of the options can be managed by using the Office365 Web interface and some task only by using PowerShell.

* Office 365 users Password management verses the "Standard" Domain Active directory is a little bit restricted. For example: configure password policy parameters such as - Enforce password history, Minimum password length, Password must meet complexity requirements cannot be configured by the office 365 administrator. At the current time, the options that related to Office 365 users Password management are: reset the user password and setting the number of maximum number of days or password expiration (the default is 90 days).

<http://technet.microsoft.com/en-us/library/hh531569.aspx>

Question No : 2

You administer a Windows 8.1 computer.

You replace a motherboard in the computer due to a hardware failure. The previous motherboard had two onboard network adaptors. You need to identify and remove unused network drivers.

What should you do?

- A. Run an elevated command prompt, and then run the command `pnputil -i-a drivename.inf`.
- B. Run an elevated command prompt, and then run the `driverquery /si` command.
- C. Run an elevated command prompt, and then execute the command `SET DEVMGR_SHOW_NONPRESENT_DEVICES=1` Open Device Manager, select Show hidden devices and uninstalled unused drivers.
- D. Run an elevated command prompt and then execute the command `sc.exe` with the `/query` parameter.

Answer: C

Question No : 3

You are a Windows 8 user. Your organization has purchased an Office 365 subscription. You install Microsoft Lync and Microsoft Outlook on your computer.

You need to connect Office 365 to Lync and Outlook.

What should you do?

- A. Run the Office Professional Plus setup from the Office 365 portal.
- B. Run the Windows Mail application. Add a new account by using your Office 365 credentials.
- C. Run the People application. Add a new account by using your Office 365 credentials.
- D. Run the Office 365 desktop setup from the Office 365 portal.

Answer: D

Explanation: Set up your desktop for Office 365

When you have set up your desktop, you will be able to:

Install the complete suite of Microsoft Office 2010 desktop apps, if you have a Office Professional Plus subscription.

Install Lync, your workplace connection for instant messaging and online meetings,

including audio and video.

Use your user ID to sign in to Office 365 from your desktop applications.

Reference:

<http://onlinehelp.microsoft.com/en-us/office365-enterprises/ff637594.aspx>

Question No : 4

You have Windows 8.1 Pro client computers.

You need to recommend a solution to roll back the Windows Defender engine and the malware signature files on the computers. The solution must minimize administrative effort.

What should you include in the recommendation?

- A. the Program and Features Control Panel item
- B. Windows 7 File Recovery
- C. the Mpcmdrun command
- D. File History

Answer: C

Explanation: Windows Defender includes a command-line utility, MpCmdRun.exe, which can be handy if you want to automate the use of Windows Defender.

`MpCmdRun.exe -RemoveDefinitions [-All]`

Restores the installed signature definitions to a previous backup copy or to the original default set of signatures.

Reference: Run (and Automate) Windows Defender from the Command Line

<https://technet.microsoft.com/en-us/magazine/gg131918.aspx>

Question No : 5

Your company has client computers that run Windows 8. All of the computers have the SkyDrive desktop application installed. Windows 7 File Recovery is configured to create a

local backup of Microsoft Office 2013 documents. Only one backup is retained. A user deletes a Microsoft Word document from his computer. The document was located in a SkyDrive synchronized folder. You need to recover the document, including the previous versions of the document. What should you use?

- A. The Recycle Bin on the desktop
- B. The SkyDrive website
- C. Windows 7 File Recovery
- D. The SkyDrive desktop application

Answer: B

Explanation: If you need to access and manage documents in your online storage directly from your PC, you may want to check out Microsoft SkyDrive for Windows. Currently available as a preview edition, SkyDrive for Windows lets you synchronize documents in the cloud—and to your Windows and Mac OS X computers.

Any changes you make to a file are updated to the same file online and across your various PCs. So the new SkyDrive essentially functions like a combination of the old SkyDrive and the Microsoft Live Mesh application.

<http://technet.microsoft.com/en-us/magazine/jj128110.aspx>

Question No : 6 DRAG DROP

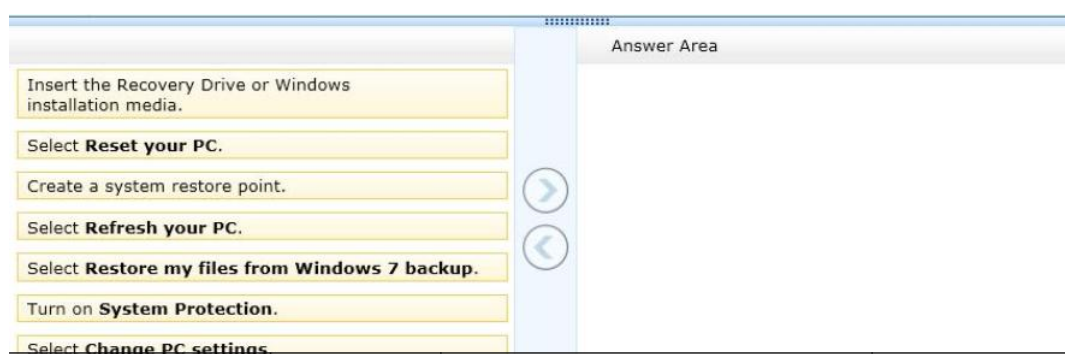
You support computers that run Windows 8.

A computer receives a STOP error.

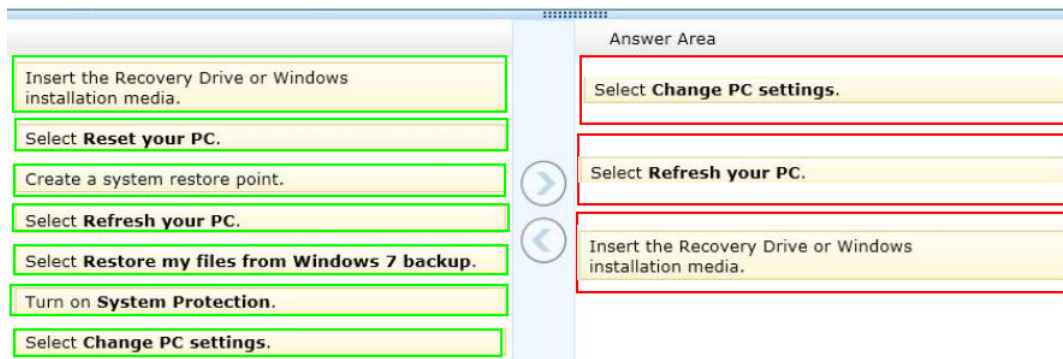
You plan to restore the operating system without losing user documents and settings.

You need to restore the operating system and user data in the least amount of time.

Which three steps should you perform in sequence? (To answer, move the appropriate actions from the list of actions to the answer area and arrange them in the correct order.)



The screenshot shows a Windows 8 recovery environment interface. On the left, there is a list of actions in yellow boxes: "Insert the Recovery Drive or Windows installation media.", "Select **Reset your PC**.", "Create a system restore point.", "Select **Refresh your PC**.", "Select **Restore my files from Windows 7 backup**.", "Turn on **System Protection**.", and "Select **Change PC settings**". To the right of this list are two circular arrows, one pointing right and one pointing left. On the right side of the interface is a grey box labeled "Answer Area".

Answer:

Explanation:

Box 1: Select Change PC Settings

Box 2: Select Refresh your PC

Box 3: Insert the Recovery Drive or Windows installation media.

Note:

* Refresh PC lets you restore all Windows settings to their defaults without deleting your documents, music and other files, and Reset PC reinstalls Windows and wipes out everything, including your files.

* To refresh your PC

- ✍ Swipe in from the right edge of the screen, tap Settings, and then tap Change PC settings.(If you're using a mouse, point to the upper-right corner of the screen, move the mouse pointer down, click Settings, and then click Change PC settings.)
- ✍ Under PC settings, tap or click General.
- ✍ Under Refresh your PC without affecting your files, tap or click Get started.
- ✍ Follow the instructions on the screen.

If asked, insert your Windows 8 disc, flash drive, or whatever else you used to first install Windows.

Question No : 7 HOTSPOT

You have Windows 8.1 Enterprise client computers. All of the computers are managed by using Microsoft System Center 2012 Configuration Manager.

You enable Microsoft System Center 2012 Endpoint Protection on the computers.

You need to ensure that Endpoint Protection automatically downloads the latest available malware definition updates when unidentified malware is detected on the computers,

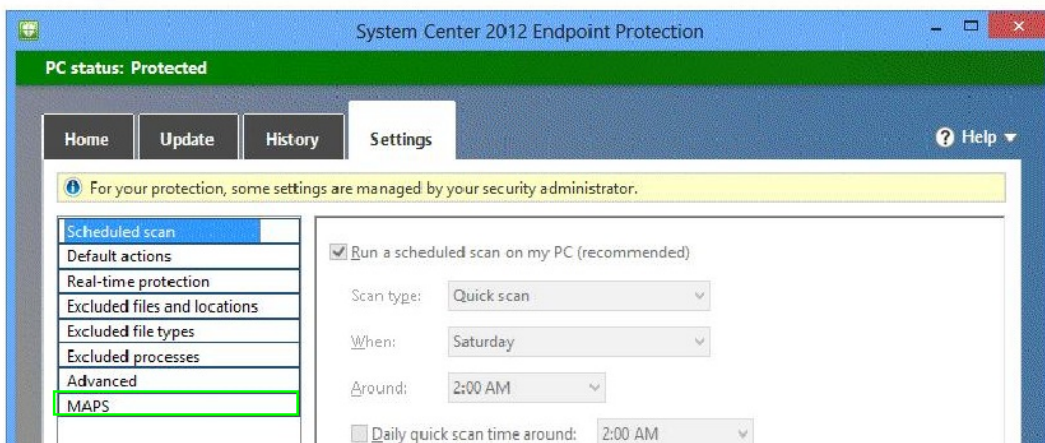
What should you configure? (To answer, select the appropriate option in the answer area.)

Answer Area



Answer:

Answer Area



Explanation:



Microsoft Active Protection Service is an online community that helps you decide how to respond to potential threats.

If YES setting is configured - Yes automatically sends information about detected malware to the Microsoft Active Protection Service.

<http://technet.microsoft.com/en-us/library/dn646970.aspx>

<http://technet.microsoft.com/en-us/library/jj822983.aspx>

Question No : 8

Your network contains an Active Directory domain. All client computers run Windows 8 Enterprise.

Microsoft System Center 2012 Endpoint Protection is deployed to all of the computers by using the default settings contained in the Default Antimalware Policy.

The users in the research department report that a folder named C:\TestApp must not be scanned by the Endpoint Protection client.

You need to configure the Endpoint Protection client not to scan the C:\TestApp folder for the computers in the research department only.

What should you do first?

- A. In the Endpoint Protection client, modify the Excluded files and locations setting for each research department computer.
- B. Create a new antimalware policy and modify the Threat overrides settings.
- C. Create a new antimalware policy and modify the Exclusion settings.
- D. In the Default Antimalware Policy, modify the Exclusion settings.

Answer: C

Explanation: Exclusion settings. Use these settings to exclude files, folders, file types and processes from scanning.

Threat overrides. Allows you to override specific threats detected by the Endpoint Protection client.

<http://technet.microsoft.com/en-us/security/jj900682.aspx>

Question No : 9

Note: This question is part of a series of questions that use the same or similar answer choices. An answer choice may be correct for more than one question in the series. Each question is independent of the other questions in this series. Information and details

provided in a question apply only to that question.

You support Windows 8.1 Enterprise desktop computers and tablets. All of the computers are able to connect to your company network from the Internet by using DirectAccess.

Your company wants to deploy a new application to the tablets. The deployment solution must meet the following requirements:

- ✍ The application is stored locally on the tablets.
- ✍ Access to the application is protected with extra logon credentials, in addition to a standard domain account used by users.
- ✍ The application utilizes the least amount of network bandwidth.
- ✍ The application must maintain access to the current desktop.

You need to deploy the new application to the tablets.

What should you do?

- A. Deploy the application as an Application Virtualization (App-V) package. Install the App-V 4.6 client on the tablets.
- B. Deploy the application as a published application on the Remote Desktop server. Create a Remote Desktop connection on the tablets.
- C. Install the application on a local drive on the tablets.
- D. Install the application in a Windows To Go workspace.
- E. Install Hyper-V on tablets. Install the application on a virtual machine.
- F. Publish the application to Windows Store.
- G. Install the application within a separate Windows 8.1 installation in a virtual hard disk (VHD) file. Configure the tablets with dual boot.
- H. Install the application within a separate Windows 8.1 installation in a VHDX file. Configure tablets with dual boot.

Answer: E

Explanation: With Hyper-V the application is run locally in virtualized environment. The Hyper-V environment can be set up to require extra authentication.

Reference: Hyper-V

<https://technet.microsoft.com/en-us/windowsserver/dd448604.aspx>

Question No : 10

A company has 100 Windows 8.1 client computers.

A computer fails and reports a kernel error.

You need to analyze the kernel error to identify what caused the failure.

What should you use?

- A. A USB recovery drive created by using the advanced recovery tools on another Windows 8 computer
- B. A system repair disk created by using Windows 7 File Recovery on another Windows 8 computer
- C. The Windows 8 Debug/Checked Build installation media
- D. A recovery disk created by using the Microsoft Diagnostics and Recovery Toolset (DaRT)

Answer: A

Explanation: <http://windows.microsoft.com/en-US/windows-8/create-usb-recovery-drive>
<http://social.technet.microsoft.com/wiki/contents/articles/5738.windows-checked-build.aspx>
Reference: How to Deploy the DaRT Recovery Image as Part of a Recovery Partition

<http://technet.microsoft.com/en-us/windowsserver/hh475797.aspx>

Question No : 11

You manage client computers that run Windows 8 and are part of a workgroup.

These computers are configured to use Microsoft Update. Updates are downloaded every day at 10:00 and installed automatically.

Users report that their computers sometimes reboot without any interaction.

You need to prevent unplanned automatic reboots of the computers.

What should you do?

- A. Enable the Reschedule Automatic Updates scheduled installations policy setting.
- B. Disable the Re-prompt for restart with scheduled installations policy setting.
- C. Enable the Automatic Updates detection frequency policy setting.
- D. Enable the No auto-restart with logged on users for scheduled automatic updates installations policy setting.

Answer: D

Explanation: If you Enable the No auto-restart with logged on users for scheduled automatic updates installations policy setting the computer will not restart until the user