

# Microsoft

## Exam 70-697

### Configuring Windows Devices

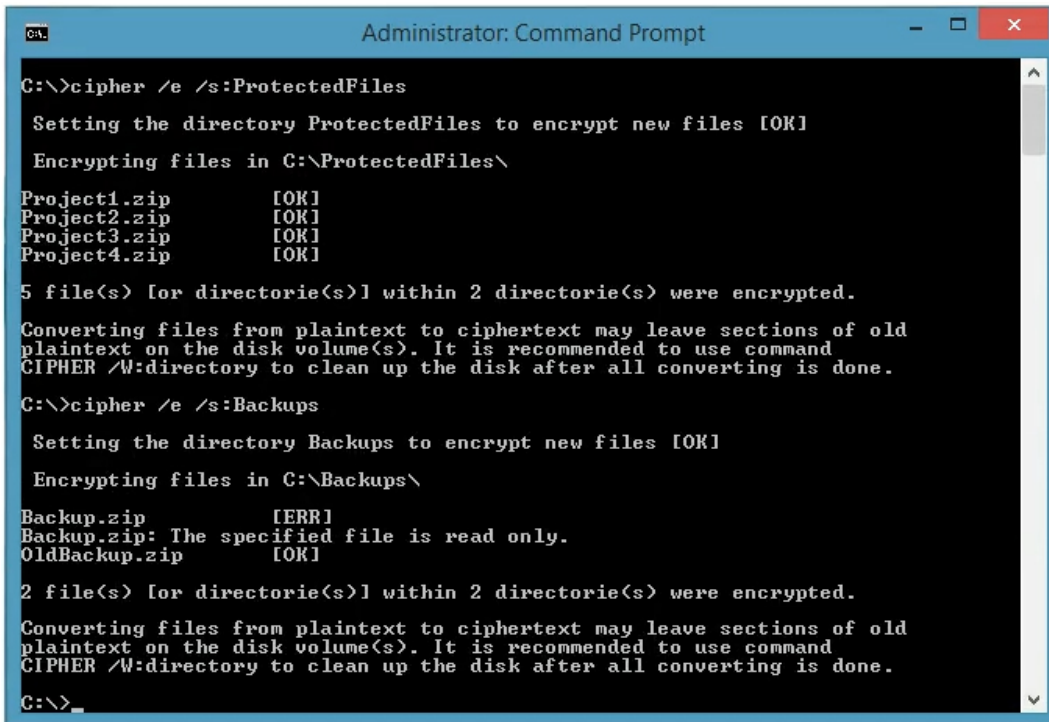
Version: 9.0

[ Total Questions: 83 ]

**Question No : 1 HOTSPOT**

Your company upgrades a research and development department workstation to a Windows 10 Enterprise computer. Two of the workstation's folders need to be encrypted. The folders are named C:\ProtectedFiles and C:\Backups.

You attempt to encrypt the folders. The output is shown in the following exhibit.



```

Administrator: Command Prompt

C:\>cipher /e /s:ProtectedFiles

Setting the directory ProtectedFiles to encrypt new files [OK]

Encrypting files in C:\ProtectedFiles\

Project1.zip          [OK]
Project2.zip          [OK]
Project3.zip          [OK]
Project4.zip          [OK]

5 file(s) [or directorie(s)] within 2 directorie(s) were encrypted.

Converting files from plaintext to ciphertext may leave sections of old
plaintext on the disk volume(s). It is recommended to use command
CIPHER /W:directory to clean up the disk after all converting is done.

C:\>cipher /e /s:Backups

Setting the directory Backups to encrypt new files [OK]

Encrypting files in C:\Backups\

Backup.zip            [ERR]
Backup.zip: The specified file is read only.
OldBackup.zip         [OK]

2 file(s) [or directorie(s)] within 2 directorie(s) were encrypted.

Converting files from plaintext to ciphertext may leave sections of old
plaintext on the disk volume(s). It is recommended to use command
CIPHER /W:directory to clean up the disk after all converting is done.

C:\>_
  
```

Use the drop-down menus to select the answer choice that completes each statement.

NOTE: Each correct selection is worth one point.

**Answer Area**

The attempt to encrypt the ProtectedFiles folder and files [answer choice]

The attempt to encrypt the Backups folder and files [answer choice]

**Answer Area**

The attempt to encrypt the ProtectedFiles folder and files [answer choice]

- succeeded for all files and folders.
- succeeded for the files but not for the folder.
- will not finish until you run the command to clean up the disk.

The attempt to encrypt the Backups folder and files [answer choice]

- failed to encrypt the files and folders.
- encrypted the folder but not the files.
- failed to encrypt one of the files but encrypted the folder and the other file.

**Answer:**
**Answer Area**

The attempt to encrypt the ProtectedFiles folder and files [answer choice]

- succeeded for all files and folders.
- succeeded for the files but not for the folder.
- will not finish until you run the command to clean up the disk.

The attempt to encrypt the Backups folder and files [answer choice]

- failed to encrypt the files and folders.
- encrypted the folder but not the files.
- failed to encrypt one of the files but encrypted the folder and the other file.

**Question No : 2**

You use a Windows 8.1 tablet. The tablet receives Windows Update updates automatically from the Internet.

The tablet has Wi-Fi and is connected to a 3G mobile broadband Wi-Fi hot spot.

You need to minimize data usage while connected to this hot spot.

What should you do?

- A. Turn on Airplane Mode.
- B. Disable **File and Print Sharing** for mobile broadband connections.
- C. Configure the interface metric of IP settings for Wi-Fi connection as 1.
- D. Edit the **Inbound Rule of Windows Firewall**, and then disable Internet Control Message Protocol (ICMP) traffic.
- E. Configure the broadband connection as a metered network.



**Answer: E**

**Question No : 3**

You have a computer named Computer1 that runs Windows 10 Enterprise. Computer1 is a member of an Active Directory domain named contoso.com.

You have a line-of-business universal app named App1. App1 is developed internally.

You need to ensure that you can run App1 on Computer1. The solution must meet the following requirements:

-  Minimize costs to deploy the app.
-  Minimize the attack surface on Computer1.

What should you do?

- A. Have App1 certified by the Windows Store.
- B. Sign App1 with a certificate issued by a third-party certificate authority.
- C. From the Update & Security setting on Computer1, enable the **Sideload apps** setting.
- D. Run the **Add-AppxProvisionedPackage** cmdlet.

**Answer: C**

**Question No : 4**

A user successfully accesses \\server1\Sources\App1\. The user cannot access \\server1\Sources\App2\.

You need to ensure that the user can access \\server1\Sources\App2\.

What should you configure?

- A. Microsoft OneDrive
- B. share permission
- C. account policies
- D. software restriction policies
- E. HomeGroup settings
- F. application control policies
- G. NTFS permissions
- H. Encrypting File System (EFS) settings

**Answer: B**

**Question No : 5**

You administer Windows 10 Enterprise client computers in your company network.

You change settings on a reference computer by using the Windows Firewall with Advanced Security tool. You want to apply the same settings to other computers.

You need to save the windows Firewall with Advanced Security configuration settings from the reference computer. You also need to be able to import the configuration settings into a Group Policy object later.

What should you do?




- A. Open Local Group Policy Editor, select the Windows Firewall with Advanced Security node, and then select the Export Policy action.
- B. Run the netsh advfirewall export c:\settings.wfw command.
- C. Run the netsh firewall export c:\settings.xml command.
- D. Run the netsh advfirewall export c:\settings.xml command.

**Answer: A**

**Question No : 6**

You support desktop computers and tablets that run Windows 8 Enterprise. All of the computers are able to connect to your company network from the Internet by using DirectAccess.

Your company wants to deploy a new application to the tablets. The deployment solution must meet the following requirements:

-  The application is able to access files stored on an internal solid-state drive (SSD) on the tablets.
-  The application is isolated from other applications.
-  The application uses the least amount of disk space on the tablet.

You need to deploy the new application to the tablets.

What should you do?

- A. Deploy the application as an Application Virtualization (App-V) package. Install the App-V 4.6 client on the tablets.
- B. Deploy the application as a published application on the Remote Desktop server. Create a Remote Desktop connection on the tablets.
- C. Install the application on a local drive on the tablets.
- D. Install the application in a Windows To Go workspace.
- E. Install Hyper-V on tablets. Install the application on a virtual machine.
- F. Publish the application to Windows Store.
- G. Install the application within a separate Windows 8 installation in a virtual hard disk (VHD) file. Configure the tablets with dual boot.
- H. Install the application within a separate Windows 8 installation in a VHDX file. Configure tablets with dual boot.

**Answer: B**

**Question No : 7**

You have a Microsoft Intune subscription.

You need to uninstall the Intune agent from a computer.

What should you do?

- A. From the Groups node in the Microsoft Intune administration portal, click Delete.
- B. From the computer run the provisioningutil.exe command.
- C. From the computer, run the cltui.exe command.
- D. From the computer use Programs and Features in Control Panel.

**Answer: A**

**Question No : 8**

Your network contains an Active Directory domain named contoso.local. All users have email addresses in the @contoso.com domain.

You need to ensure that users can register Windows Phone 8.1 devices for mobile device management (MDM).

Which DNS record should you create?

- A. Enterprisedevice.contoso.com
- B. Deviceregistration.contoso.local
- C. Deviceregistration.contoso.com
- D. Enterpriseregistration.contoso.com
- E. Enterpriseregistration.contoso.local

**Answer: C**

**Question No : 9**

You deploy several tablet PCs that run Windows 10 Enterprise.

You need to minimize power usage when the user presses the sleep button.

What should you do?

- A. In Power Options, configure the sleep button setting to **Sleep**.
- B. In Power Options, configure the sleep button setting to **Hibernate**.
- C. Configure the active power plan to set the system cooling policy to **passive**.
- D. Disable the C-State control in the computer's BIOS.

**Answer: B**

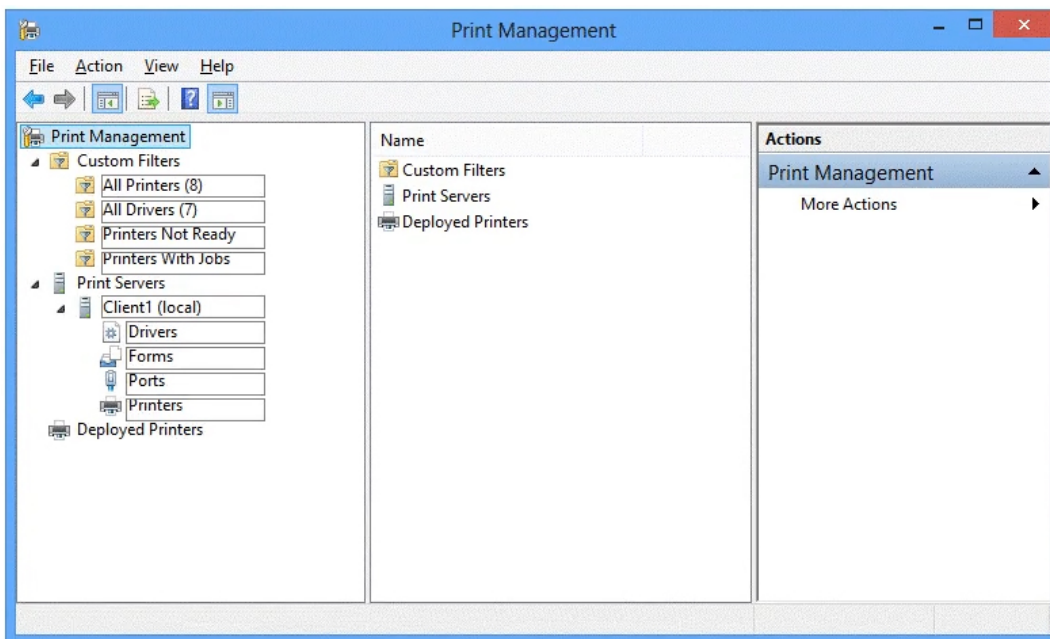
**Question No : 10 HOTSPOT**

You administer Windows 10 Enterprise computers in your company network, including a computer named Wst1. Wst1 is configured with multiple shared printer queues.

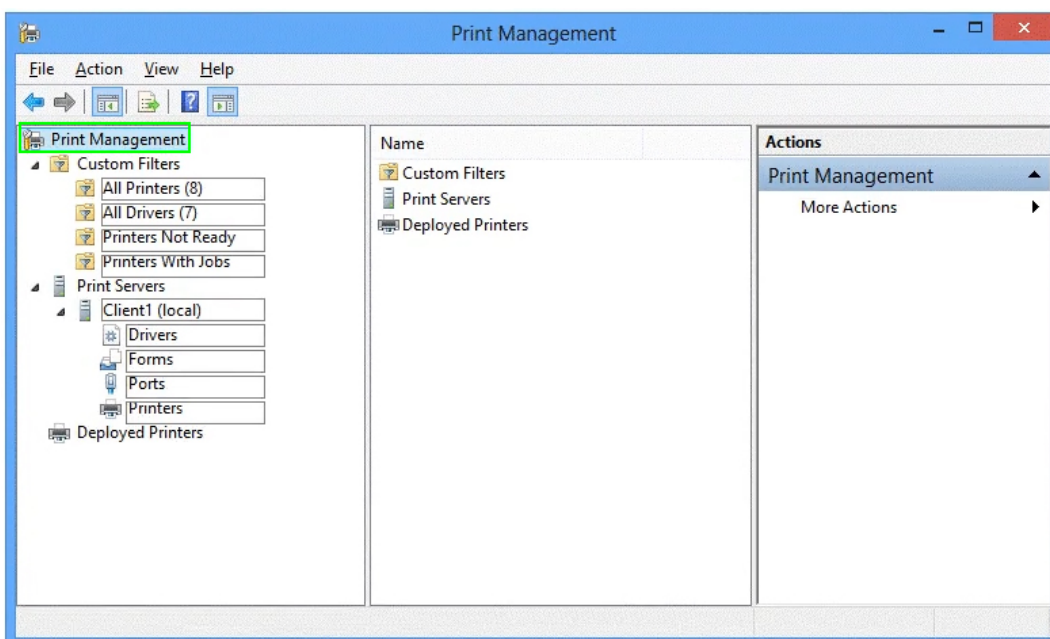
Wst1 indicates hardware errors. You decide to migrate the printer queues from Wst1 to a new computer named Client1.

You export the printers on Wst1 to a file. You need to import printers from the file to Client1.

From the Print Management console, which Print Management node should you select? To answer, select the appropriate node in the answer area.



Answer:



**Question No : 11**

A company has an Active Directory Domain Services (AD DS) domain. All client computers run Windows 10 Enterprise and are joined to the domain.

You have the following requirements:



## Microsoft 70-697 : Practice Test

- ✍ Ensure that files in shared network folders are available offline.
- ✍ Maximize efficiency for users who connect to shared network folders from a mobile device.
- ✍ You need to configure Group Policy settings to meet the requirements.

What should you do first?

- A. Enable the Enable file synchronization on costed networks policy setting.
- B. Enable the Synchronize all offline files when logging on policy setting.
- C. Enable and configure the Configure slow-link mode policy setting.
- D. Enable and configure the Specify administratively assigned Offline Files policy setting.

**Answer: A**

### Question No : 12

You administer a Windows 10 Enterprise computer that runs Hyper-V. The computer hosts a virtual machine with multiple snapshots. The virtual machine uses one virtual CPU and 512 MB of RAM.

You discover that the virtual machine pauses automatically and displays the state as **paused-critical**.

You need to identify the component that is causing the error.

Which component should you identify?

- A. no virtual switch defined
- B. insufficient memory
- C. insufficient hard disk space
- D. insufficient number of virtual processors

**Answer: C**

### Question No : 13

You have a computer that runs Windows 10 and is used by 10 users. The computer is joined to an Active Directory domain. Each user has an Active Directory account.

You need to ensure that all of the users can access the files located in one another's libraries.

What should you configure?

- A. Microsoft OneDrive
- B. HomeGroup settings
- C. Encrypting File System (EFS) settings
- D. NTFS permissions
- E. account policies
- F. share permissions
- G. software restriction policies
- H. application control policies

**Answer: B**

**Question No : 14 DRAG DROP**

You have a Windows 10 Enterprise computer. You have a 1-terabyte external hard drive.

You purchase a second 1-terabyte external hard drive.

You need to create a fault-tolerant volume that includes both external hard drives. You also need to ensure that additional external hard drives can be added to the volume.

Which three actions should you perform in sequence? To answer, move the appropriate actions from the list of actions to the answer area and arrange them in the correct order.

**Actions**

- Restore your data from the backup.
- From Storage Spaces, create a new storage pool. Set the Resiliency Type to **two-way mirror**.
- From Storage Spaces, create a new storage pool. Set the Resiliency Type to **parity**.
- From Storage Spaces, create a new storage pool. Set the Resiliency Type to **three-way mirror**.
- Back up the existing data on your original external hard drive.
- From Disk Management, create and format a new volume on the second external drive.
- From Disk Management, create a mirrored volume containing the two external drives.



**Answer Area**

