

Microsoft

Exam 98-365

Windows Server Administration Fundamentals

Version: 8.3

[Total Questions: 147]

Question No : 1

Users report that they are unable to print. You verify that the print spooler service is running. What should you do next?

- A. Purge the service
- B. Disable the service
- C. Pause the service
- D. Restart the service

Answer: D

Question No : 2

To protect a server in case of a blackout, you should use a/an:

- A. Uninterruptible Power Supply.
- B. Dedicated surge protector.
- C. Power Supply Unit.
- D. Redundant power supply.
- E. Hot-swappable power supply.
- F. Line conditioner.

Answer: A

Question No : 3

Power On Self Test (POST) runs when a computer first boots.

Which component software issues this test?

- A. Complementary Metal Oxide Semiconductor
- B. Northbridge On Board Chip
- C. Basic Input/Output System
- D. Southbridge On Board Chip

Answer: C

Explanation: The four main functions of a PC BIOS (Basic Input/Output System).

POST - Test the computer hardware and make sure no errors exist before loading the operating system. Additional information on the POST can be found on our POST and Beep Codes page.

Bootstrap Loader - Locate the operating system. If a capable operating system is located, the BIOS will pass control to it.

BIOS drivers - Low level drivers that give the computer basic operational control over your computer's hardware.

BIOS or CMOS Setup- - Configuration program that allows you to configure hardware settings including system settings such as computer passwords, time, and date.

Reference: <http://www.computerhope.com/jargon/b/bios.htm>

Question No : 4

You have an Active Directory infrastructure that contains one domain and seven domain controllers. How many forests can you have without creating any trusts?

- A. 0
- B. 1
- C. 7
- D. 8

Answer: B

Explanation: In a Windows Server 2003 forest, you can link two disjointed Windows Server 2003 forests together to form a one-way or two-way, transitive trust relationships. A two-way, forest trust is used to form a transitive trust relationship between every domain in both forests.

Question No : 5 HOTSPOT

You are troubleshooting a permissions issue with the Reports share. The permissions are shown in the following image:



The groups connect to the share.

Use the drop-down menus to select the answer choice that answers each question. Each correct selection is worth one point.

Answer Area

Accounting

	▼
Read	
Modify	
Full Control	

Marketing

	▼
Read	
Modify	
Full Control	

Answer:

Answer Area

Accounting

	▼
Read	
Modify	
Full Control	

Marketing

	▼
Read	
Modify	
Full Control	

Question No : 6

Which RAID level mirrors a set of disks and then stripes across the disks?

- A. RAID 0
- B. RAID 1
- C. RAID 5
- D. RAID 10

Answer: D

Explanation: A RAID 1+0, sometimes called RAID 1&0 or RAID 10. RAID 10 is a stripe of mirrors.

Question No : 7

You need to install storage device drivers for a Windows boot partition. When should you do this?

- A. After you have started Windows for the first time
- B. Before creation of the RAID array
- C. During the post-boot phase
- D. During the installation phase

Answer: D

Explanation: Example:

During the first phase of the Windows XP installation, Setup displays the following message at the bottom of the screen:

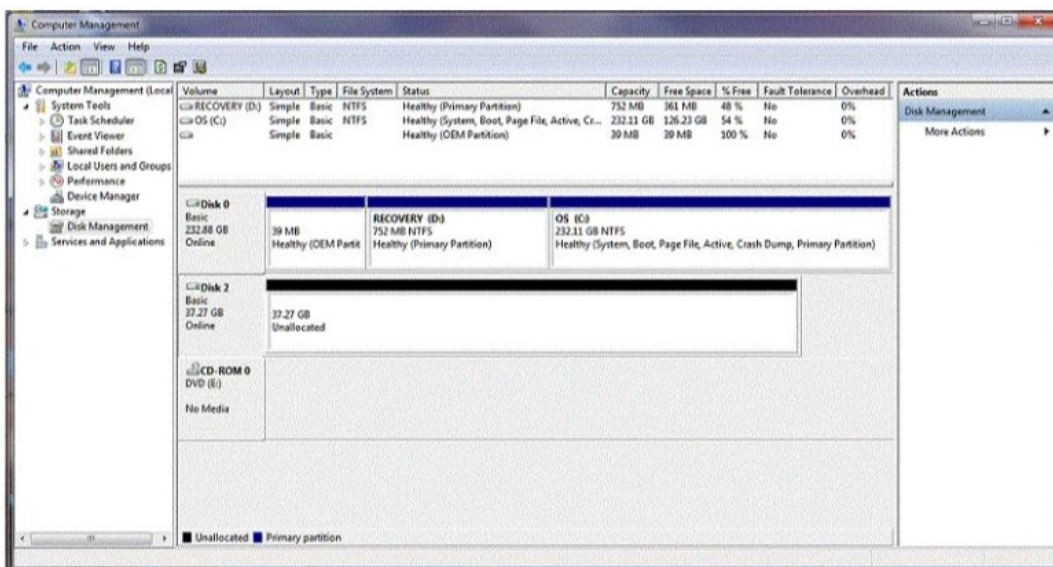
Press F6 if you have to install a third-party SCSI or RAID driver.

Press F6 and then follow the instructions to install a mass-storage device driver from your Original Equipment Manufacturer (OEM).

Question No : 8 HOTSPOT

You buy a new USB hard drive for your server. After connecting the drive, you need to make this drive available to Windows.

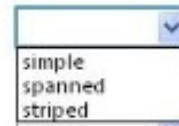
In Computer Management Disk Management you see the drive, but it is not visible in Explorer's Computer view, as shown in the following image:



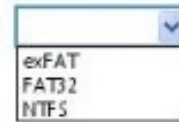
Use the drop-down menus to select the answer choice that completes each statement. Each correct selection is worth one point.

Answer Area

You should create a [answer choice] volume on Disk 2.



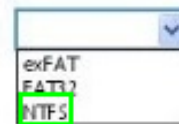
You should format Disk 2 as [answer choice] to support compression.


Answer:
Answer Area

You should create a [answer choice] volume on Disk 2.



You should format Disk 2 as [answer choice] to support compression.


Question No : 9

The University Chess Club has a single Windows Server 2008 R2 server. The server has 12 GB of RAM and 1TB of disk space on a RAID 5 array. Using this server, you need to install two separate instances of Windows Server 2008 R2: one to act as a web server and one to act as a database server.

Which Windows Server 2008 R2 role or feature provides this capability?

- A. Windows Deployment Services
- B. Hyper-V
- C. Windows System Resource Manager
- D. Windows Internal Database

Answer: A

Explanation: Hyper-V can create virtual machines on x86-64 systems.

Starting with Windows 8, Hyper-V supersedes Windows Virtual PC as the hardware virtualization component of the client editions of Windows NT. A server computer running

Hyper-V can be configured to expose individual virtual machines to one or more networks.

Question No : 10 DRAG DROP

In which order are group policies applied?

(To answer, move the appropriate scopes from the list of scopes to the answer area and arrange them from first applied to last applied)

Scopes	Answer Area
Domain	
Local	
Organizational Unit	
Site	

Answer:

Scopes	Answer Area
Domain	Local
Local	Site
Organizational Unit	Domain
Site	Organizational Unit

Question No : 11

What is the name for a stand-alone digital storage system connected directly to a server or workstation HBA?

- A. Small Computer System Interface (SCSI)
- B. Direct Attached Storage (DAS)
- C. Network Attached Storage (NAS)
- D. Storage Area Network (SAN)

Answer: A

Explanation: The term HBA applies to a variety of interconnects, it is most commonly used with storage protocols such as Fibre Channel (FC) and serial-attached SCSI (SAS).

Note: A host bus adapter (HBA) is a circuit board and/or integrated circuit adapter that provides input/output (I/O) processing and physical connectivity between a host system, or server, and a storage and/or network device.

Reference: <http://searchstorage.techtarget.com/definition/host-bus-adapter>

Question No : 12

To enable enhanced keyboard and mouse functions for a Hyper-V virtual machine, you need to install:

- A. Hyper-V Integration Components.
- B. Keyboard and mouse drivers.
- C. Microsoft Updates.
- D. Hyper-V Server.

Answer: A

Explanation: To get a virtual machine (VM) to work properly, it's critical to install the Hyper-V integration components. These integration components install agents into a VM that enable a host to successfully back up a VM, recognize when it has gone down, copy and paste data into and out of a VM, and synchronize its clock to the host. These components are important to processing a VM's workload: In effect, their installation reconfigures an operating system to make it "aware" that it has been virtualized, resulting in an "enlightened" OS.

Question No : 13

To change the boot device order of a computer, you should use:

- A. Device Manager.
- B. Disk Management.
- C. BIOS settings.
- D. Computer Policy.

Answer: C

Explanation: Example: Change the Boot Order in BIOS

Turn on or restart your computer and watch for a message during the POST about a particular key, usually Del or F2, that you'll need to press to ...enter SETUP. Press this key as soon as you see the message.

Etc

Question No : 14

This question requires that you evaluate the underlined text to determine if it is correct.