

# Apple

## Exam 9L0-403

### Mac OS X Support Essentials 10.6

Version: 5.2

[ Total Questions: 105 ]

**Question No : 1**

Which statement is TRUE of both USB and FireWire bus technologies?

- A. Both buses can host up to 127 peripherals.
- B. Both buses can operate at speeds up to 800 Mbit/s.
- C. Both bus technologies support only one type of connector each.
- D. Both buses can supply power to low-power consumption devices on the bus.

**Answer: D**

**Question No : 2**

How does the Finder in Mac OS X v10.6 identify the application it will use to open a file?

- A. The Finder queries the Spotlight index.
- B. The Finder consults a directory of Spotlight plug-ins provided by each application.
- C. The Finder queries the volume catalog stored on the Mac OS Extended file system.
- D. The Finder queries Launch Services, which queries a database in /Library/Caches/.

**Answer: D**

**Question No : 3**

In a default Mac OS X v10.6 file system, which of these is an absolute path to the home folder for a user account named becky?

- A. ./becky/
- B. ~/becky/
- C. Users/becky/
- D. /Users/becky/

**Answer: D**

**Question No : 4**

## Apple 9L0-403 : Practice Test

Web pages will not load on a Mac OS X v10.6 computer. Which three troubleshooting steps can help you identify the cause? Choose three - partial credit possible.

- A. Verify network settings in Network preferences.
- B. Confirm network connectivity using Internet Connect.
- C. Confirm network connectivity using Network Diagnostics.
- D. Test direct IP connectivity using Network Utilities Ping command.
- E. Confirm network activity using the Activity Report in Network Monitor.
- F. Verify the presence of DNS servers on the network using Network Utilities DNS Scan command.

**Answer: A,C,D**

### Question No : 5

Which tool should you use to manually configure 100BASE-TX Ethernet on a Mac OS X v10.6 computer?

- A. Console
- B. Network Utility
- C. Internet Connect
- D. Network preferences

**Answer: D**

### Question No : 6

Which items in a Mac OS X v10.6 file system are accessible to any guest user who connects to the computer via SMB?

- A. The contents of /System/
- B. The contents of /Users/Shared/
- C. The home folder of all standard users on the system
- D. The Public folder of all standard and admin users on the system
- E. The Drop Box folder of all standard and admin users on the system

**Answer: D**

**Question No : 7**

Personal File Sharing is enabled on a Mac OS X v10.6 computer. Warren has a standard user account and Tina has an admin user account on the computer. What two share points will be available for Warren to mount when he connects to the computer via AFP?

Choose two.

- A. /Users/Public/
- B. /Users/Shared/
- C. Tinas home folder
- D. Tinas Public folder
- E. Warrens home folder

**Answer: D,E**

**Question No : 8**

How do you reset the Mac OS X v10.6 printing system?

- A. Navigate to /Library/Printers/ in the Finder, select all items, and move them to the Trash.
- B. Open Printer Setup Utility and choose Reset Printing System from the Printer Setup Utility menu.
- C. Control-click in the Printers list of the Print & Fax preferences, then choose Reset printing system.
- D. Open System Preferences, Option-click the Print & Fax preferences icon, and click Reset in the dialog that appears.

**Answer: C**

**Question No : 9**

Review the screenshot, and then answer the question below.



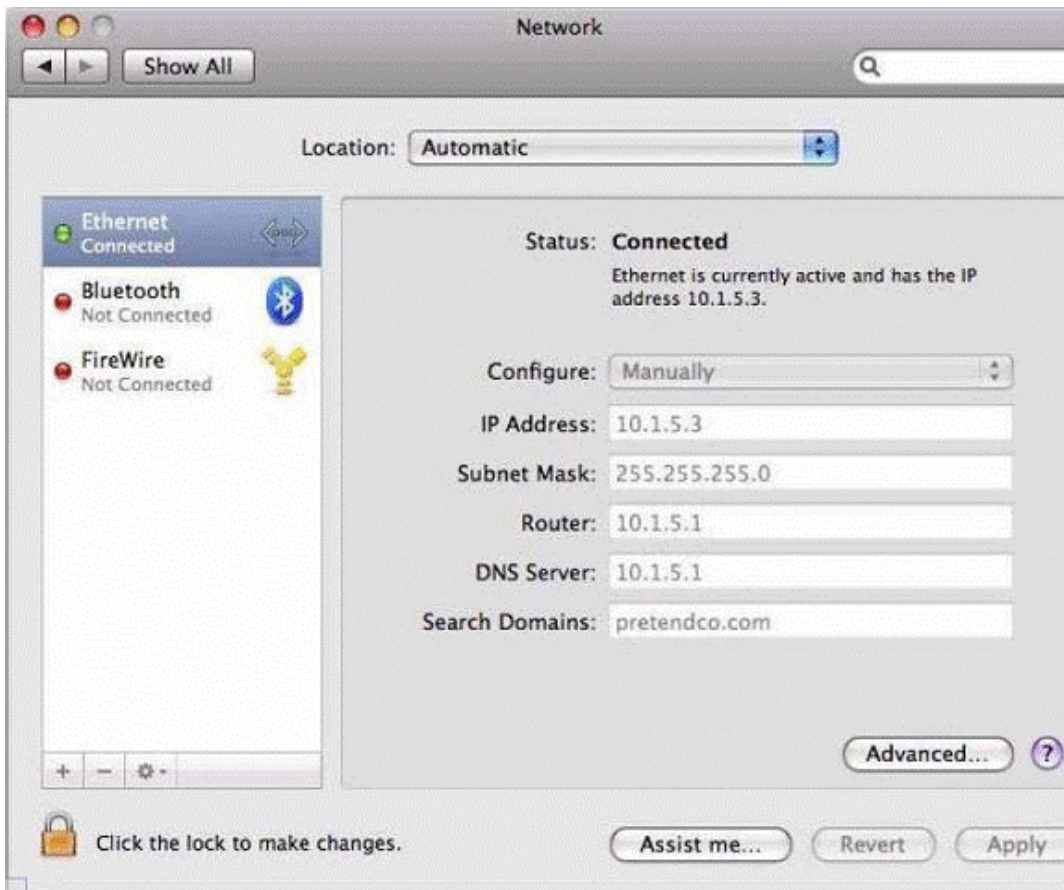
You perform a default installation of Mac OS X v10.6, and then create an account for Chris. The Chris account is a member of which group?

- A. staff
- B. chris
- C. wheel
- D. admin
- E. workgroup

**Answer: A**

**Question No : 10**

Review the screenshot of a Network preferences pane, and then answer the question below.



What is the range of IP addresses in this computer's local network?

- A. 10.1.0.0 to 10.1.255.255
- B. 10.1.5.0 to 10.1.5.255
- C. 10.1.5.0 to 10.1.7.255
- D. 10.1.5.1 to 10.1.5.256

**Answer: B**

**Question No : 11**

Which statement is true of Kerberos?

- A. Kerberos requires LDAP.
- B. Kerberos supports single sign-on.
- C. Kerberos requires service discovery.
- D. Kerberos sends your user name and password to each server you access.

**Answer: B**

**Question No : 12**

When a user chooses Shut Down from the Apple menu, what process quits all of the user's open applications and tells the kernel to power down the computer?

- A. init
- B. launchd
- C. kernel\_task
- D. loginwindow

**Answer: D**

**Question No : 13**

What are two reasons a system administrator might choose to store user accounts on a directory server? Choose two - partial credit possible.

- A. So that users can access their FileVault-protected home directories quickly.
- B. So that users can access a variety of services using the same account credentials.
- C. So that the admin user can manage user accounts centrally on the directory server, rather than individually on each client workstation.
- D. So that the admin user can implement Windows-style hashes for SMB/CIFS file sharing; hashes are supported for directory accounts, but not for local accounts.
- E. So that the admin user can use parental controls to manage users; parental controls restrictions can only be implemented on accounts stored on a directory server.

**Answer: B,C**

**Question No : 14**

You enter the command `rm -R /Applications/Exec.app` in the default shell in a Mac OS X Terminal window. What role does the string `"/Applications/Exec.app"` play in this command?

- A. A flag that redirects the command
- B. A switch that modifies the argument
- C. An option that modifies the command
- D. The command that the shell executes
- E. The argument that the command acts on

**Answer: E**

**Question No : 15**

Which two statements are true of file and folder permissions in the Finder in Mac OS X v10.6? Choose two.

- A. A user with Write only permissions to a folder can delete any file in that folder.
- B. A user with Write only permissions to a folder can rename any file in that folder.
- C. A user with Write only permissions to a folder cannot view any files in that folder.
- D. A user with Read only permissions to a folder cannot view any files in that folder.
- E. A user with Read only permissions to a folder cannot rename any files in that folder.

**Answer: C,E**

**Question No : 16**

Review the screenshot of the About This Mac window, and then answer the question below.





You want to find the System Software Build number of the copy of Mac OS X v10.6 running on a computer. Where should you click in the About This Mac window, shown above, to find the answer without opening another application?

- A. Apple logo icon
- B. Mac OS X
- C. Version 10.6
- D. More Info button

**Answer: C**

**Question No : 17**

You have configured your Mac OS X v10.6 computer to share its connected USB printer. Mac OS X users can locate and print to it, but Windows users can not. What additional step must you take to allow Windows users to print to it?