

# Apple

## Exam 9L0-422

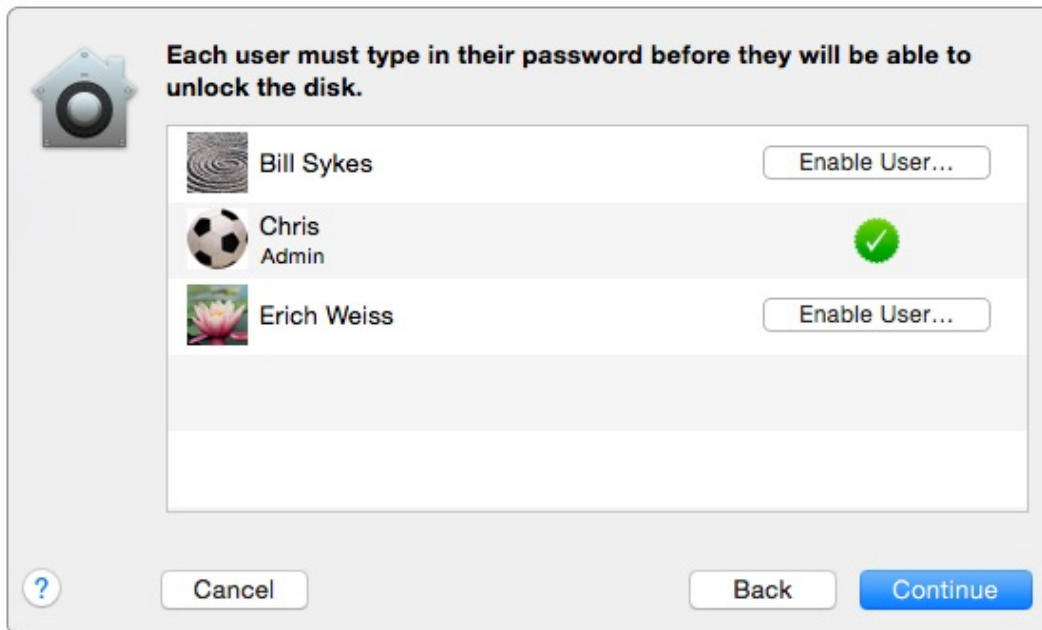
### OS X Support Essentials 10.10

Version: 6.0

[ Total Questions: 82 ]

**Question No : 1**

Review the screenshot from FileVault preferences, then answer the question below.



You click the Enable User button for the Bill Sykes account. What happens next?

- A. An alert message appears that says Bill Sykes will be prompted to enter the Recovery Key at next login.
- B. An alert message appears that says FileVault is now enabled for the Bill Sykes account.
- C. You're prompted to enter an administrator password to enable FileVault on the Bill Sykes account.
- D. You're prompted to enter the Bill Sykes login password to enable FileVault on the Bill Sykes account.

**Answer: C**

**Question No : 2**

Which IP address could a Mac assign to its Ethernet interface if no DHCP services were available on the network?

- A. 10.0.0.100
- B. 169.254.100.100

- C. 172.16.100.100
- D. 192.168.100.100

Answer: B

**Question No : 3**

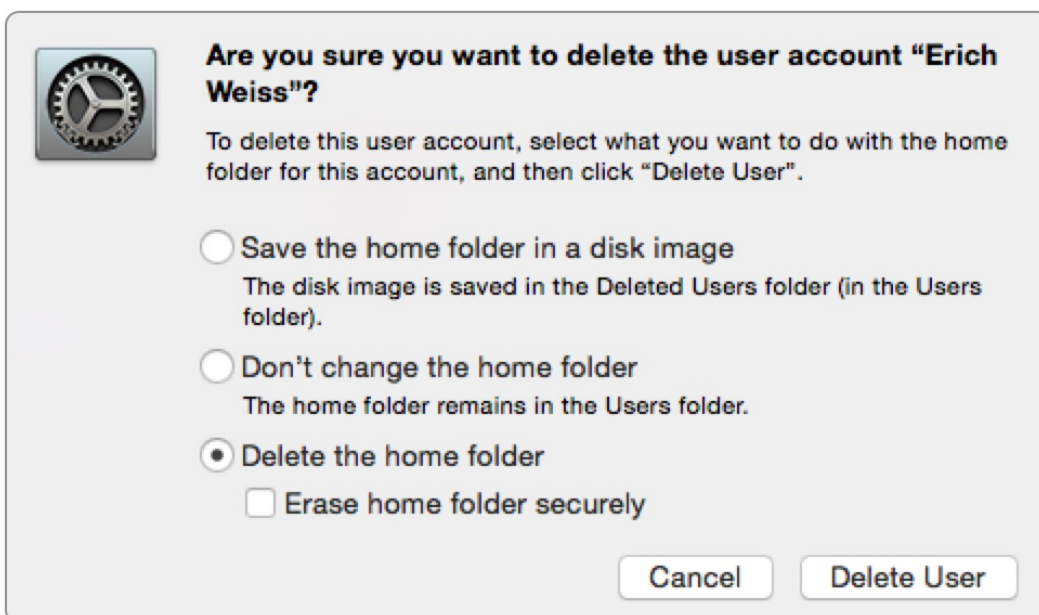
Along with IMAP, POP, and SMTP, which protocol does the Mail application in OS X support?

- A. Exchange Web Services (EWS)
- B. WebDAV
- C. MAPI
- D. Exchange ActiveSync (EAS)

Answer: A

**Question No : 4**

Review the screenshot, then answer the question below.



If you click Delete User in the dialog shown above, what will happen to Erich's home folder?

- A. It will be renamed Deleted compressed and encrypted, and archived in Time Machine.
- B. It will be moved to the Trash.
- C. It will be deleted immediately, without being moved to the Trash.
- D. It will be renamed Deleted, and the folder's permissions will be changed to allow administrator user access only.

**Answer: C**

**Question No : 5**

An OS X computer is connected to both an Ethernet and a Wi-Fi network. In Network System Preferences, how can you specify which interface the Mac will use to access the Internet?

- A. Click Internet Connect to select the preferred interface, then disable the other interface(s).
- B. In the Action pop-up menu, choose Set Service Order, then move the preferred interface to the top of the Service Order list.
- C. Assign a public IP address to the preferred interface and a private IP address to the other interface(s).
- D. Enter a DNS configuration for the preferred interface, and delete the DNS configuration for the other interface(s).

**Answer: B**

**Question No : 6**

Which process can you use to start up a Mac in target disk mode?

- A. Start up from the OS X Recovery partition, choose Target Disk Mode from the Startup Disk menu, then restart the Mac.
- B. Hold down the S key as the Mac starts up, then enter the command `shutdown -r -target`.
- C. Restart your Mac, then hold down the T key as the Mac starts up.
- D. Hold down the Option key as the Mac starts up, until a dialog appears, then select Target Disk Mode from the dialog.

**Answer: C**

**Question No : 7**

On a Mac with multiple user accounts, which default permission is assigned to a User's Documents folder?

- A. Everyone has Read-only access.
- B. Everyone has Read & Write access.
- C. The Staff group has Read & Write access.
- D. Only the account owner has access.

**Answer: D**

**Question No : 8**

When Time Machine backed up your file yesterday, the file was 5MB. Now that you've changed the file, it's 6MB. What does Time Machine do with the file at the next backup?

- A. Time Machine copies the 6MB file to the backup drive and deletes the original backup copy of the file from the backup drive.
- B. Time Machine copies the 6MB file to the backup drive and keeps both the new backup file and the original backup file on the backup drive.
- C. Time Machine identifies the 1MB of file changes, copies those changes to a new file on the backup drive, and keeps both the new backup file and the original backup file.
- D. Time Machine identifies the 1MB of file changes, copies those changes to a new file on the backup drive, creates a 500K parity file, and keeps all three files: the two new files representing the 1MB of file changes and the original backup file.

**Answer: C**

**Question No : 9**

Migration Assistant is open on a Mac with OS X. Which of these is NOT a source that user files can be migrated from?

- A. Another volume on the same computer
- B. A Windows 8 computer
- C. An archive stored on iCloud
- D. A Time Machine backup on an external hard drive connected via USB

**Answer: C**

**Question No : 10**

In a default OS X configuration, you want to configure OS X to delete ZIP files after they're expanded in the Finder. Where can you make that change?

- A. Finder Preferences
- B. System Preferences
- C. Disk Utility Preferences
- D. Archive Utility Preferences

**Answer: D**

**Question No : 11**

Which statement best describes the function of Gatekeeper?

- A. To prevent users from downloading viruses and trojan horses
- B. To prevent users from connecting to unauthorized file-sharing websites
- C. To prevent users from opening untrusted applications
- D. To prevent users from downloading untrusted applications

**Answer: C**

**Question No : 12**

In the Finder, which statement is true of file and folder permissions?

- A. A user with Write-only permissions for a folder can delete any file in that folder.
- B. A user with Write-only permissions for a folder can rename any file in that folder.
- C. A user with Read-only permissions for a folder can't view any files in that folder.
- D. A user with Read-only permissions for a folder can't rename any files in that folder.

**Answer: D**

**Question No : 13**

When Marie logs in to her computer, she sees an error message that the system was unable to unlock her login keychain. What's a likely explanation for this?

- A.** Before the current login session, Marie removed Keychain Access from her login items.
- B.** In a previous login session, Marie's account password was reset in Users & Groups preferences.
- C.** In a previous login session, Marie enabled FileVault on her account, then reset her account password in Users & Groups preferences.
- D.** Before the current login session, Marie's account password was reset using the Reset Password utility on the OS X Recovery system partition.

**Answer: D**

**Question No : 14**

In the Finder, how can you access the Library folder that's hidden inside the current user's home folder?

- A.** Hold down the Option key. From the Go menu in the Finder, choose Library.
- B.** Hold down the Option key. From the Action menu in the Finder, choose "Show hidden items."
- C.** Navigate to the user's home folder. From the View menu in the Finder, choose "Show hidden items."
- D.** From the Finder menu, choose Preferences and select "Show hidden items."

**Answer: A**

**Question No : 15**

On your OS X computer, you want the Finder to display filename extensions by default. How can you configure this setting?

- A.** Choose Show View Options from the View menu in the Finder, and select the option "Show all filename extensions."
- B.** Choose Preferences from the Finder menu, click Advanced, and select the option "Show