

Apple

Exam 9L0-517

ACTC 10.7 Recertification Exam

Version: 6.0

[Total Questions: 93]

Question No : 1

What protocol does the Mail application in OS X Lion use to send email from a client computer to a mail server for delivery?

- A. SMTP
- B. LDAP
- C. IMAP
- D. POP
- E. XMPP

Answer: A

Question No : 2

What are TWO ways an administrator can deliver a profile to iOS devices? (Choose 2.)

- A. Email the profile as an attachment to the user with instructions to install it on the iOS device.
- B. Distribute the profile to users' computers over the network, then tell users to sync their devices to their computers using iTunes.
- C. Connect each iOS device to an admin computer, and copy the .pfm file to the device.
- D. Post the profile on the App Store, and tell users to download it.
- E. Using Profile Manager, push the profile to an enrolled iOS device.

Answer: A,E

Question No : 3

What protocol does OS X Lion Server use to send email between mail servers?

- A. POP
- B. XMPP
- C. SMTP
- D. IMAP
- E. MAPI

Answer: C

Question No : 4

Which procedure will prevent guest users from seeing a specific shared folder that is hosted on an OS X Lion Server?

- A. Enable the Hidden flag on the folder.
- B. Set the folder's permissions for Everyone Else to No Access.
- C. Add a period to the beginning of the folder's name.
- D. Click the folder, then select Get Info from the File menu, and click the option "Hide from Guest Users."

Answer: B

Question No : 5

You want to manage iOS devices using Profile Manager. To do so, which THREE of these must be available to Profile Manager? (Choose 3.)

- A. A valid SSL certificate
- B. A configured WebDAV share
- C. A computer with iPhone Configuration Utility running
- D. A running AFP server
- E. A valid APNS certificate
- F. An Open Directory master

Answer: A,E,F

Question No : 6

Which statement best describes the wiki in OS X Lion Server?

- A. A series of date-stamped and chronologically ordered entries on a website
- B. A collaborative website that can be edited within a web browser
- C. A website that is configured to provide access to mail accounts
- D. A folder on a website, with permissions that restrict access to the files it contains

Answer: B

Question No : 7

Which of these is an example of authorization in OS X Lion and OS X Lion Server?

- A. The list of available volumes displayed when connecting to a file service
- B. A ticket-granting ticket in Ticket Viewer
- C. The "Connect to Server" dialog in Server Admin
- D. The User ID in a user account

Answer: A

Question No : 8 HOTSPOT

Your network administrator has assigned you these network settings:

IP address 10.1.5.7

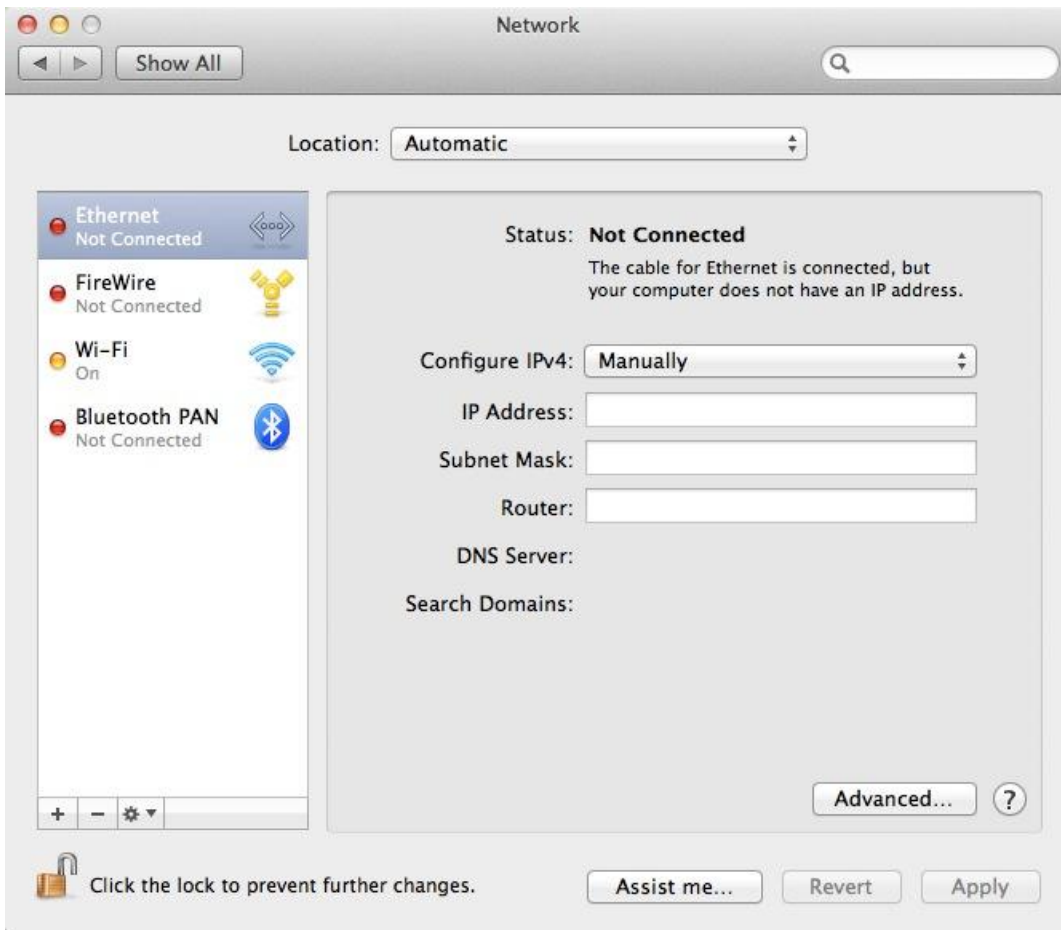
subnet mask 255.255.255.0

router address 10.1.5.1

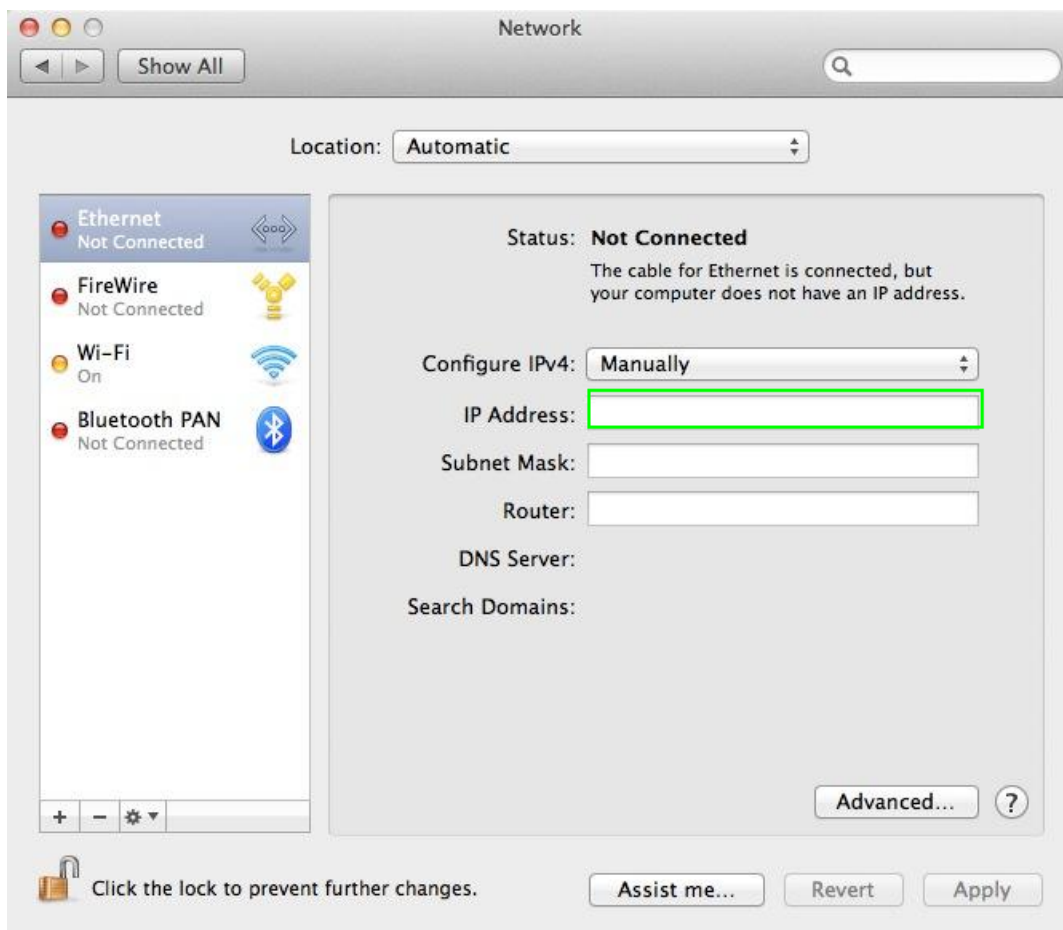
In the screenshot below, click the field (or its name) where you can type 10.1.5.7/24 to auto-populate the remaining fields with the network settings you have been given.

(You will see a green crosshair where you click. You can change your selection.)

Apple 9L0-517 : Practice Test



Answer:



Question No : 9

Using Server Admin, you are configuring email alerts to be sent to the system administrator of an OS X Lion Server. Which THREE of these server events can you select to trigger an alert?

(Choose 3.)

- A. An unsuccessful attempt was made to log in with the root account.
- B. A web page has been updated in the wiki service.
- C. The number of files on the server has exceeded a specified number.
- D. The number of users has exceeded a specified number.
- E. New software updates are available for the server.
- F. A disk has less than a specified percentage of free space available.
- G. A certificate has expired or is about to expire.
- H. A user has exceeded his or her assigned disk quota.

Answer: E,F,G

Question No : 10

What is an advantage of deploying signed Profile Manager profiles, rather than unsigned Profile Manager profiles?

- A. Signed profiles can be updated on devices via an update process; unsigned profiles must be deleted before a new profile can be installed.
- B. Only signed profiles can be installed on a device.
- C. An unsigned profile's source or contents may be misrepresented; signing validates both.
- D. Signed profiles cannot be removed by users without administrator authorization; unsigned profiles can be.

Answer: C

Question No : 11

Which key(s) can you press during a Mac computer's startup to cause the Mac to use NetBoot at startup?

- A. Command-N
- B. N
- C. Control-N
- D. Shift-N

Answer: B

Question No : 12

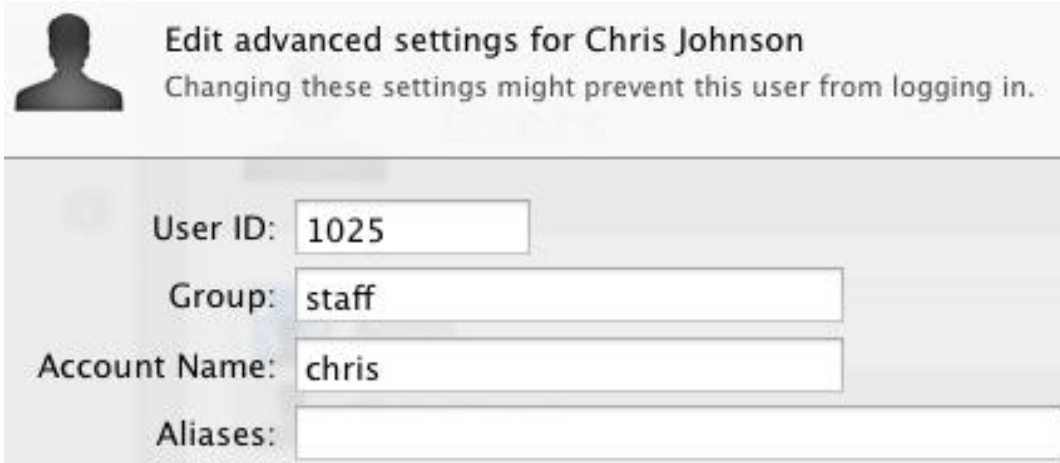
You want to secure the communication between the iCal service on an OS X Lion Server and its iCal clients. Using Server app, which of these can you use to achieve your goal?

- A. A Kerberos Ticket Granting Ticket (TGT)
- B. An SSH tunnel
- C. An SSL certificate and the HTTPS protocol
- D. The Universal Security Convention (USC)

Answer: C

Question No : 13

Review the screenshot of the user settings for Chris Johnson, and then answer the question below.



Edit advanced settings for Chris Johnson
Changing these settings might prevent this user from logging in.

User ID:

Group:

Account Name:

Aliases:

What iChat service account name will this user have on the chat.pretendco.com server?

- A. user1025@chat.pretendco.com
- B. Chris Johnson
- C. chris@chat.pretendco.com
- D. chris_johnson@chat.pretendco.com

Answer: C

Question No : 14

A user enables FileVault 2 and gets a recovery key. Which TWO methods for storing the recovery key does FileVault suggest to the user? (Choose 2.)

- A. Make a copy of the recovery key and store it in a safe place.
- B. Save the recovery key in the System Keychain.
- C. Store the recovery key with Apple.
- D. Store the recovery key on the Lion Recovery system partition, in the Recovery Key pane in FileVault 2.
- E. Store the recovery key in the Recovery Key folder in an iCloud account.

Answer: A,C

Question No : 15

Review the screenshot of settings for Address Book on an OS X Lion computer, and then answer the question below.



The OS X Lion computer whose Address Book settings are shown above is connected to an active Address Book service on a Lion Server at contacts.pretendco.com. By default, where will new contacts be stored?

- A. In the iCloud service, and synced to all configured devices
- B. Only on the Lion client computer
- C. Only on the Lion Server
- D. On the Lion Server, and synced to the Lion client computer

Answer: D

Question No : 16

Using the Server Status widget in OS X Lion Server, which of these services can you monitor?

- A. Podcast
- B. Profile Manager
- C. File Sharing
- D. Web

Answer: C