

# SAS Institute

## Exam A00-270

### SAS BI Content Development for SAS 9

Version: 7.0

[ Total Questions: 107 ]

**Question No : 1**

When a SAS Web Report Studio report is built, the default behavior is to produce an aggregated report with measures summed. Average is a more appropriate aggregation for an age data item. In the information map, how can the aggregation be changed to average the measures?

- A. Change the default aggregation function to MEAN on the Properties of the data item.
- B. After the default aggregation is set, it cannot be changed in the information map.
- C. Change the measure's classification to MEAN.
- D. Change the format of the data item to AVERAGEw.d.

**Answer: A**

**Question No : 2**

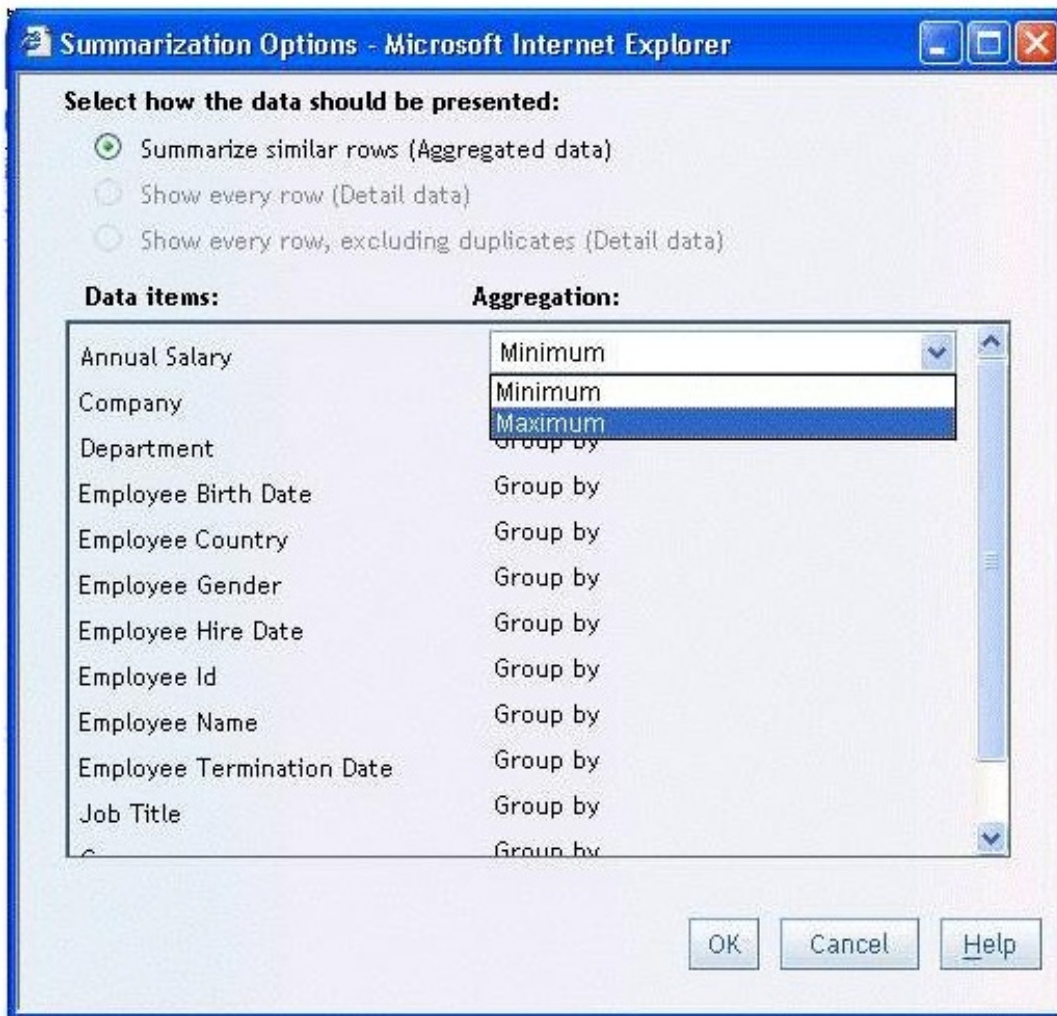
A content developer wants to emphasize the indicator value shown by a dynamic gauge in SAS BI Dashboard. The content developer wants to display the color of the selected range while the other ranges remain neutral. How can this be achieved?

- A. Change the other colors in the range to be a neutral color.
- B. Select the gauge type to be a Dynamic Speedometer.
- C. Check the Ghost checkbox on the select a gauge screen.
- D. Alter the style to support shadowing.

**Answer: C**

**Question No : 3**

Refer to Exhibit:



A SAS Web Report Studio user is changing the summarization option for Annual Salary and the only aggregations allowed are Minimum and Maximum. Why is the list limited to only these two choices?

- A. The user is assigned to a role that only allows these aggregations.
- B. SAS Web Report Studio only supports these aggregations.
- C. These are the only aggregations supported for currency data items.
- D. The information map creator has limited the available aggregations.

**Answer: D**

**Question No : 4**

Refer to the exhibit.



A user is creating a Custom Filter in SAS Web Report Studio. The Get Values button is grayed out and there is a message saying that the data item does not allow available values to be displayed.

Which change would need to be made to the information map to allow the user to use the Get Values button?

- A. Create a prompting Filter in the information map that only allows the user to type a value.
- B. Alter the value generation method of the data item to either select from a static or a dynamic list.
- C. Change the item type from a measure to a category.
- D. Values cannot be displayed for this type of data.

**Answer: B**

### Question No : 5

A dashboard shows a horizontal row of three static Traffic Light gauges. Each Traffic Light gauge is positioned vertically instead of horizontally.

What should be done to position each gauge horizontally?

- A. Select Flip Horizontal on the gauge properties.
- B. Ensure the dashboard and indicator are the correct width to display three gauges.
- C. Reduce the display size of the gauge sufficiently to allow all three to fit.
- D. Change to a gauge type that supports horizontal display of multiple gauges.

**Answer: B**

**Question No : 6**

Which statement is true regarding the SAS My Folder metadata location?

- A. The My Folder location is a valid place to share content.
- B. Every user with a SAS metadata identity has a My Folder location.
- C. The My Folder location is a temporary work location.
- D. The My Folder location is only available to the user it belongs to.

**Answer: B**

**Question No : 7**

Which SAS applications can be used to create data sources for reporting and analysis using the SAS platform applications? (Choose two.)

- A. SAS Enterprise Guide
- B. SAS Information Delivery Portal
- C. SAS Information Map Studio
- D. SAS Web Report Studio

**Answer: A,C**

**Question No : 8**

Which data sources can be used to create reports and analysis using SAS Web Report Studio? (Choose two.)

- A. SAS Information Map
- B. SAS OLAP cube

- C. SAS Stored Process
- D. SAS table

**Answer: A,C**

**Question No : 9**

Refer to the exhibit.



The exhibit shows the SAS Folders structure in SAS Management Console. Folders that contain which type of content are displayed in the SAS BI Dashboard application?

- A. Information maps
- B. Stored processes
- C. Jobs
- D. Reports

**Answer: A**

**Question No : 10**

Which statement is true regarding roles?

- A. Only groups can be members of roles.
- B. Only users can be members of groups or roles.
- C. You must use roles to control access to application features.
- D. You must use roles to control access to data sources and reporting content.

**Answer: C**

**Question No : 11**

In the default configuration, which application does not prompt for user credentials?

- A. SAS Add-In for Microsoft Office
- B. SAS Information Map Studio
- C. SAS Management Console
- D. SAS OLAP Cube Studio

**Answer: A**

**Question No : 12**

Where can shared prompts be stored?

- A. ASAS Folders location
- B. An operating system location on your machine
- C. An operating system location on the server machine
- D. ASAS Enterprise Guide project

**Answer: A**

**Question No : 13**

Which SAS Management Console plug-in is used to define metadata for channels?

- A. Configuration Manager plug-in
- B. Schedule Manager plug-in
- C. Foundation Services Manager plug-in
- D. Publishing Framework plug-in



Answer: D

**Question No : 14**

A stored process will be used to provide a dynamic data source for an information map.

Which type of data source must the stored process use?

- A. A relational table
- B. An OLAP cube
- C. An information map
- D. An XML file

Answer: A

**Question No : 15**

Refer to the exhibit.



SAS Web Report Studio - Report\_EmployeeReport

File Edit View

Please answer the prompts below and click the View Report button to continue.

**EmployeeReport**

Select Country:

Select Department:

A user is running a stored process from a SAS Web Report Studio report. The stored process has a cascading prompt requesting the user to select Country then Department.



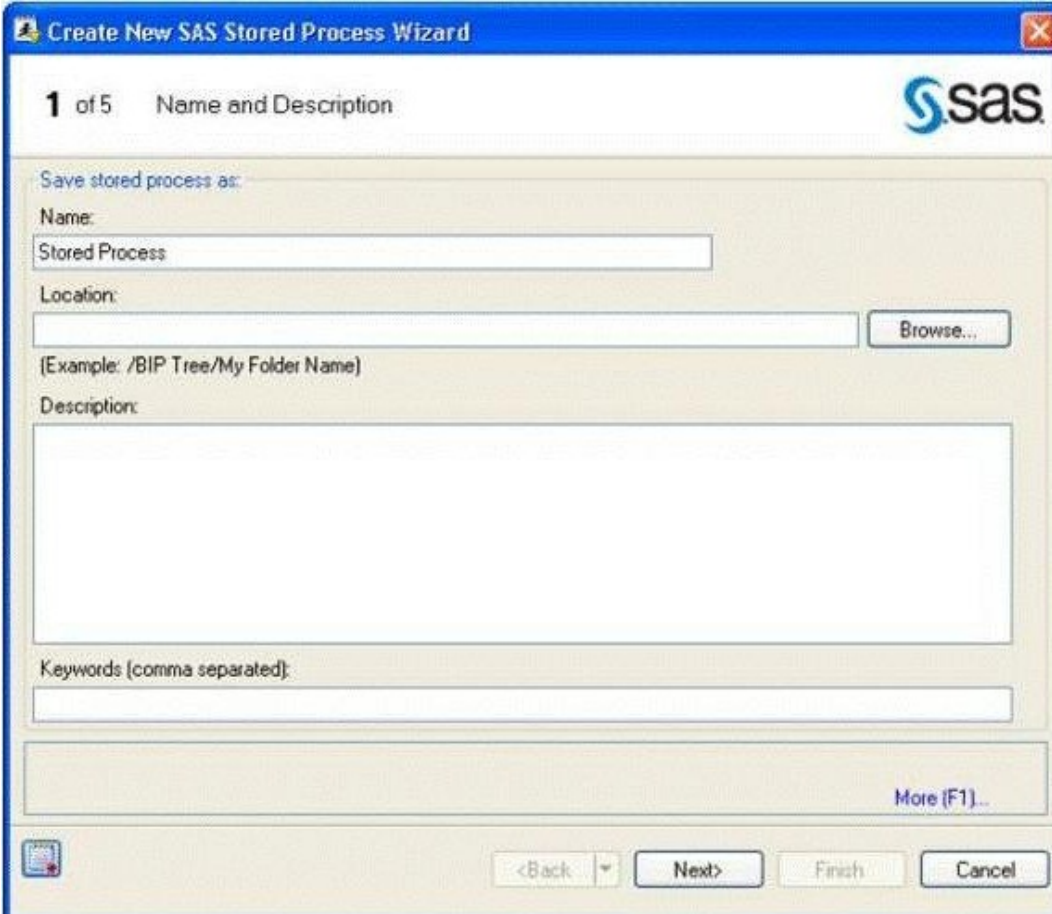
The user attempts to select a value but the drop down for Country is empty. Why are the values for the prompt missing?

- A. The user does not have permission to the prompt.
- B. The user does not have permission to the prompt source data.
- C. The user does not have permission to the stored process.
- D. The user does not have permission to the Stored Process Server.

**Answer: B**

**Question No : 16**

Refer to the exhibit.



The screenshot shows the 'Create New SAS Stored Process Wizard' dialog box, Step 1 of 5: Name and Description. The dialog has a blue title bar with the SAS logo. The main area contains the following fields and controls:

- Name:** A text box containing 'Stored Process'.
- Location:** A text box with a 'Browse...' button to its right. Below it is an example: '[Example: /BIP Tree/My Folder Name]'.
- Description:** A large empty text area.
- Keywords (comma separated):** A text box.
- More (F1):** A link to the right of the Keywords field.
- Navigation:** At the bottom, there are buttons for '<Back', 'Next>', 'Finish', and 'Cancel'.

A content developer is creating a stored process using the New SAS Stored Process Wizard in SAS Enterprise Guide.

Which information is contained in the location field?

- A. The location of the data source used by the stored process
- B. The location of the SAS Enterprise Guide Project
- C. The location of the metadata for the stored process
- D. The location of the output produced by the stored process

**Answer: C**

**Question No : 17**

When you register a stored process in the metadata, you specify the type of output the stored process can produce. What is a valid value for the output options in the metadata?

- A. HTML
- B. PDF
- C. SAS report
- D. package

**Answer: D**

**Question No : 18**

To implement a stored process, the content developer must write the programming code, register the stored process in the metadata and test the stored process. Which client application can be used to complete all three steps?

- A. SAS Management Console
- B. SAS Data Integration Studio
- C. SAS Information Map Studio
- D. SAS Enterprise Guide

**Answer: D**

**Question No : 19**

What is the significance of the %STPBEGIN statement? (Choose two.)

- A. Initializes the ODS system