

**BCP-621**

**BCP-621**

**Designing and Deploying a BlackBerry Solution v5.0 in a  
IBM Lotus Domino Environment**

**Version 3.5**

## BCP-621

### Topic 1, Nextair Corporation Scenario

#### Company profile

You are a system administrator and you have been hired by Nextair Corporation. The company is looking at implementing the BlackBerry solution into their International offices. The company has a total of 1,500 potential BlackBerry device users spread out among various locations.

The Head Office in New York: 800

#### Other Offices include:

Toronto: 300

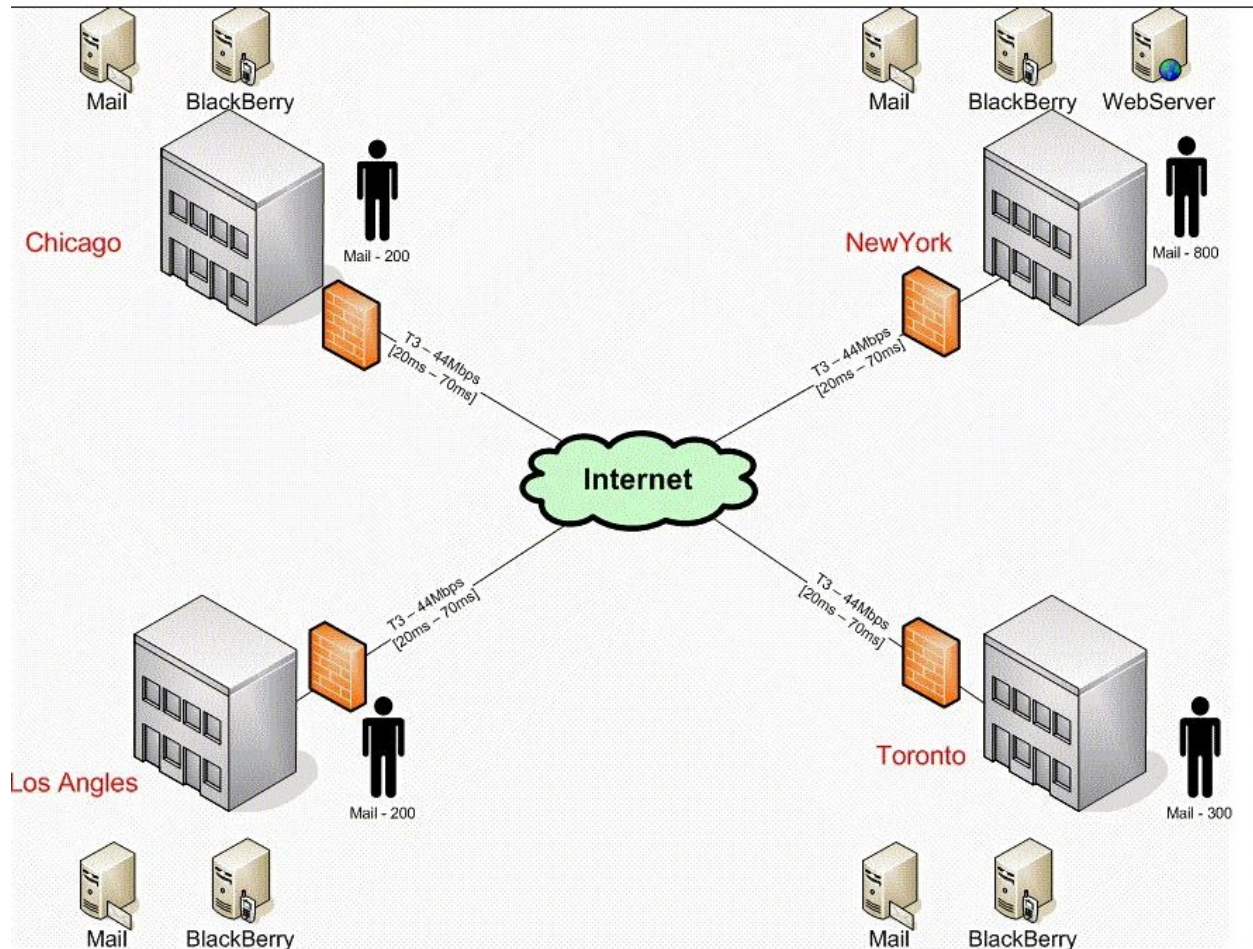
Chicago:200

Los Angeles:200

#### Requirements and considerations:

- The company has an internal intranet website based out of New York which contains sales information and a sales application. This sales application must be available to all sales employees on the BlackBerry.
- The three other offices have a WAN network connection to the New York office with a ping response time of 20 ms to 70 ms.
- Each location has its own Lotus Domino Server and Microsoft SQL server.
- All potential BlackBerry device users require the use of the following features:
  - o Instant Messaging
  - o BlackBerry MDS browsing (Internal/External)
  - o Email messaging
  - o Custom applications (The sales application contained on the application server in New York)
- Over the next three years, the company plans to expand its BlackBerry device users by 20%.
- All BlackBerry Enterprise Server administration will be done in one central location (New York). In addition, each remote location will have an administrator that reports to the New York office.
- Due to budget constraints, BlackBerry Enterprise Servers can only be installed in two locations at this time.
- For security purposes, all BlackBerry Routers must be located in the DMZ.

## BCP-621



### QUESTION NO: 2

After upgrading two BlackBerry Enterprise Server instances to software version 5.0 services books and IT policies are automatically updated and sent to BlackBerry devices running which minimum version of BlackBerry Device Software? (Choose one)

- A. 3.8 and above
- B. 4.0 and above
- C. 4.2 and above
- D. 4.3 and above
- E. 5.0 and above

**Answer: B**

### QUESTION NO: 1

## BCP-621

Nextair Corporation has determined the hardware running BlackBerry Enterprise Server software version 4.1.6 will be insufficient to handle version 5.0. They plan to perform a cutover upgrade using the existing SQL database. What is an advantage of implementing this strategy? (Choose one)

- A. There is no downtime for other BlackBerry Enterprise Server software version 4.1.6 instances sharing the same SQL database
- B. They will save the cost of an additional SRP Identifier
- C. There is no need to back up the database prior to upgrade
- D. The SQL database must be hosted locally to the BlackBerry Enterprise Server

**Answer: B**

### QUESTION NO: 2

Management has requested that the ability to activate BlackBerry devices on the BlackBerry Enterprise Server be restricted to approved BlackBerry device models only. What can be used to accommodate this request? (Choose one)

- A. IT Policy
- B. PIN to Model Mapping
- C. Enterprise Service Policy
- D. Application Control Policy
- E. Group Filter

**Answer: C**

### QUESTION NO: 3

## BCP-621

One thousand BlackBerry 8830 devices have been sent to the employees in the regional offices and the BlackBerry device users will be issued enterprise activation passwords next week. Management would like to prevent unneeded wireless data charges. What can be done to ensure this mass enterprise activation process uses as little wireless data as possible? (Choose one)

- A. Set the 'Disable Wireless Activations' IT policy to 'True'
- B. Set the 'Disable Wireless Bulk Loads' IT policy to 'True'
- C. Set the 'Disable Enterprise Activation Progress' IT policy to 'True'
- D. Set the 'Disable Wireline Activations' IT policy to 'True'

**Answer: B**

### QUESTION NO: 4

Which tool can be used to help control the amount of data the BlackBerry Synchronization Service sends after an upgrade to BlackBerry Enterprise Server software version 5.0 is complete? (Choose one)

- A. SBInjector
- B. PolcTrait
- C. TraitTool
- D. SBThrottle
- E. SyncControl

**Answer: C**

### QUESTION NO: 5

## BCP-621

Given the scenario, which BlackBerry Enterprise Server component should be installed in New York to allow for management of the BlackBerry solution? (Choose one)

- A. BlackBerry Monitoring Service
- B. BlackBerry Alert
- C. BlackBerry Administration Service
- D. BlackBerry Policy Service
- E. BlackBerry Manager

**Answer: C**

### QUESTION NO: 6

Which two features does BlackBerry Desktop Manager offer that BlackBerry Web Desktop Manager does not? (Choose two.)

- A. Backup and Restore
- B. PIM Sync
- C. Certificate Sync
- D. Application Loader
- E. Email Filters

**Answer: B,C**

## BCP-621

### Topic 2, Plazmic Inc. Scenario

#### Plazmic Inc.

##### Company profile

You are hired as a consultant to implement the BlackBerry solution for Plazmic Inc. The company is based in San Francisco and has offices in Vancouver and London. All VIPs are located in the London office and require a guaranteed connection at all times. Company policy dictates that secure messaging and encryption are in place.

San Francisco: 8000

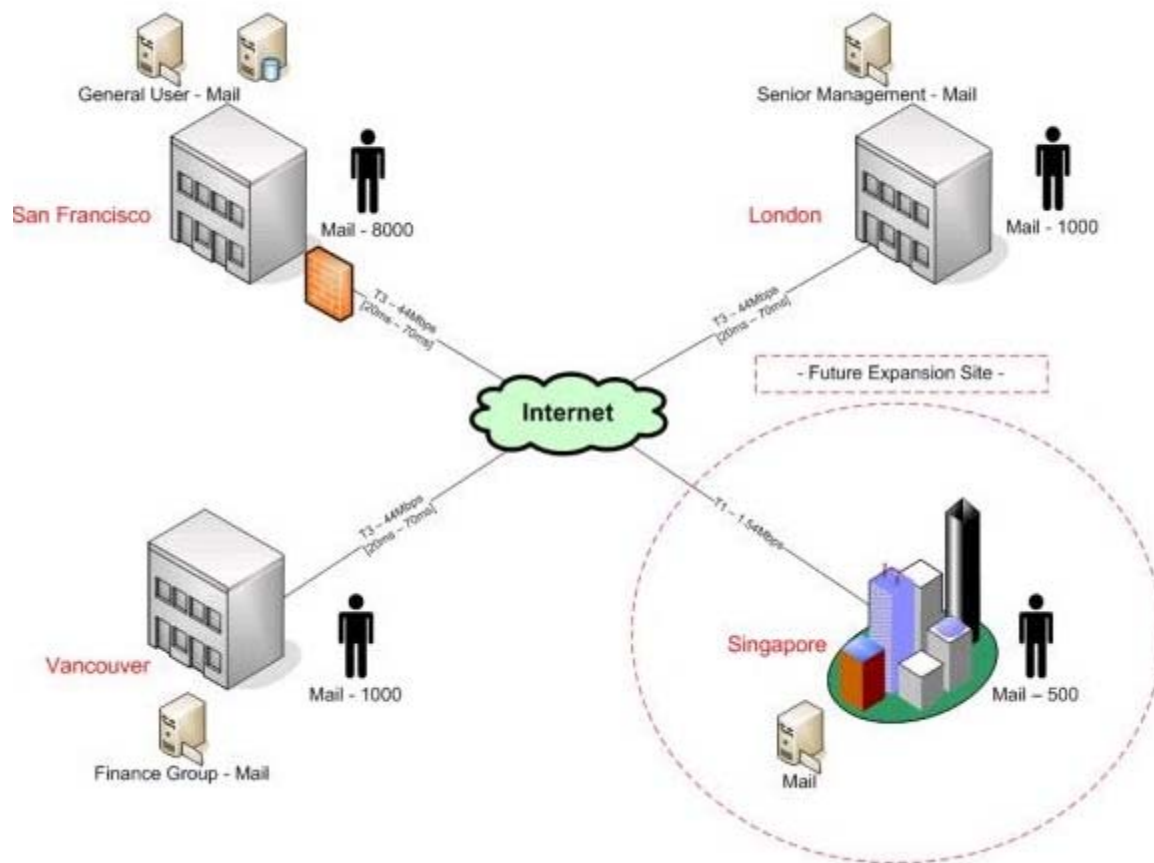
Vancouver: 1000

London: 1000

##### Requirements and considerations

- All servers are currently centrally managed in the San Francisco office
- The Vancouver and London offices use a WAN connection
- All of senior management is located in the London office
- The financial part of the business is handled through the Vancouver office
- The San Francisco office consists of middle management and all other employees
- All users are required to login to authenticate to a proxy server in order to access the Internet
- Plazmic Inc anticipates a 30% growth rate of employees for the next fiscal year
- With the expected growth rate, Plazmic Inc plans to open another office in Singapore with approximately 500 employees
- Currently there is one Microsoft SQL server in San Francisco, but fault tolerance has become a priority for VIP in the London office
- The VIP expect 24 hours a day, 7 days a week access to e-mail messaging, calendaring and internal applications which use the BlackBerry MDS connection service
- Network bandwidth should be a consideration for best performance

## BCP-621



### QUESTION NO: 7

Including the future expansion, what is the minimum number of BlackBerry Enterprise Server instances needed by Plazmic Inc., not taking into account high availability? (Choose one.)

- A. 1
- B. 2
- C. 3
- D. 4
- E. 5