

IBM

Exam C9510-319

**IBM WebSphere Application Server Developer Tools V8.5 with
Liberty Profile**

Version: 3.0

[Total Questions: 75]

Question No : 1

Which of the possible files can be used to modify the mappings from WSDL to Java for a JAXWS- based application?

- A. WSDL
- B. XML schema
- C. JAX-B binding file
- D. JAX-WS binding file
- E. JSR 109 mapping metadata file

Answer: A,C,D

Question No : 2

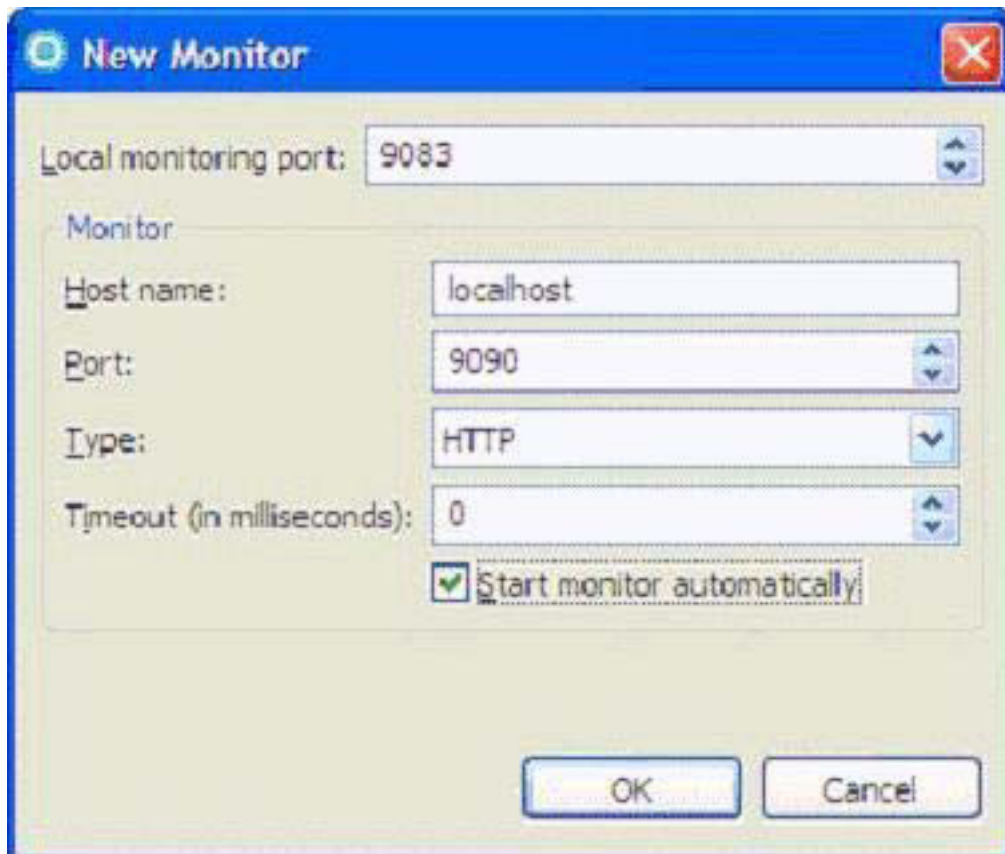
A developer is building a JAX-WS Web service to be deployed on IBM Web Sphere Application Server V7.0. The service consumers are financial institutions with client applications using Microsoft .NET V3.5. The service will be used to retrieve image files and send them to the financial institutions. What is the recommended approach to send the image files?

- A. SOAP with Attachments
- B. Direct Internet Message Encapsulation (DIME)
- C. Message Transmission Optimization Mechanism (MTOM)
- D. Message Handlers and the SOAP with Attachments API for Java (SAAJ)

Answer: C

Question No : 3

Refer to the exhibit. Weather? Web service is configured under the WeatherBeanWeb context. From the diagram in the exhibit, what is the correct URI for TCP/IP Monitor to work?



- A. <http://localhost/WeatherBeanWeb/services/Weather>
- B. <http://localhost:9083/WeatherBean/services/Weather>
- C. <http://localhost:9090/WeatherBean/services/Weather>
- D. <http://localhost:9083/WeatherBeanWeb/services/Weather>
- E. <http://localhost:9090/WeatherBeanWeb/services/Weather>

Answer: D

Question No : 4

A developer is using the WebSphere Server application Developer Tools to convert their existing JPA project to an OSGi JPA bundle. The original JPA project has a persistence.xml file that is by default located in the src/META-INF folder of the project.

The developer invokes the action to convert the JPA project to an OSGi bundle project.

Which changes are expected to be performed by the tools to the original project when it is converted to an OSGi bundle?

- A. The MANIFEST.MF file is generated under a new META-INF folder in the root of the

project. The following entry is added to the MANIFEST.MF file:

Meta-Persistence:

B. The MANIFEST.MF file is generated under a new META-INF folder without a

Meta-Persistence:

Entry

C. The MANIFEST.MF file is generated in the src/META-INF folder which contains the persistence.xml file. The following entry is added to the MANIFEST.MF file:

Meta-Persistence:

D. The MANIFEST.MF file is generated in the BundleContext/META-INF folder. The persistence.xml is moved from the src folder to the same location as the MANIFEST.MF.

Answer: C

Question No : 5

JSR109 defines the life cycle of a Service Implementation Bean in the Web container. Which sequence of statements below is TRUE?

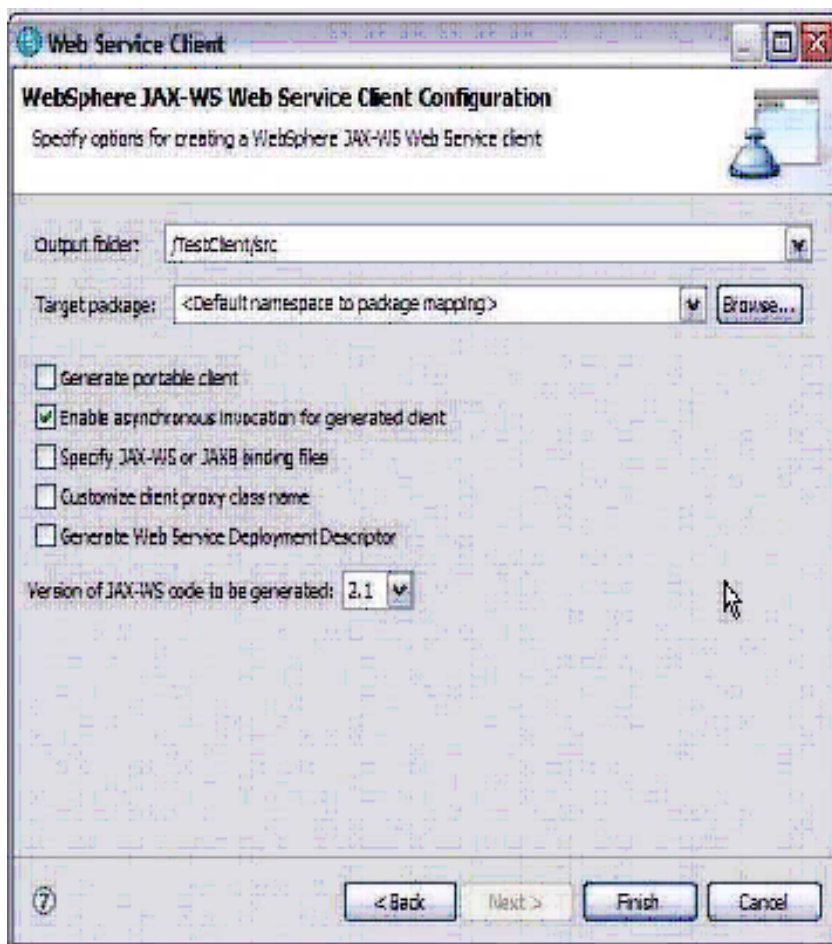
- A.** 1. The Web container calls the method annotated with javax.annotation.PostConstruct annotation.
2. The web container creates a new instance of the Service Implementation Bean.
3. The web container may pool method ready instances of a Service Implementation Bean and dispatch a method request on any instance in a method ready state.
4. For the web container with JAX-WS runtime, the method annotated javax. annotation. Pre Destroy is called.
- B.** 1. The web container creates a new instance of the Service Implementation Bean.
2. For web containers with JAX-WS runtime, the container calls the method annotate with javax.annotation.PostConstruct annotation.
3. The web container may pool method ready instances of a Service Implementation Bean and dispatch a method request on any instance in a method ready state.
4. For the web container with JAX-WS runtime, the method annotated with javax. annotation. PreDestroy is called.
- C.** 1. The web container creates a new instance of the Service Implementation Bean.
2. For web containers with JAX-WS runtime, the container calls the method annotated with javax.annotation.PostConstruct annotation.
3. The web container may pool method ready instances of a Service Implementation Bean and dispatch a method request on any instance in a method ready state.
4. For the web container with JAX-WS runtime, the method annotated with javax. annotation. PrePassivate. is called.
- D.** 1. The Web container calls the method annotated with javax.annotation.PostActivate annotation.
2. The container creates a new instance of the Service Implementation Bean.

3. The web container may pool method ready instances of a Service Implementation Bean and dispatch a method request on any instance in a method ready state.
4. For the web container with JAX-WS runtime, the method annotated with javax.annotation.PrePassivate is called.

Answer: B

Question No : 6

Refer to the exhibit.



A developer uses the Web service client wizard in IBM Rational Application Developer. What will be different in the generated artifacts?

- A. Additional methods will be generated to invoke the Web service.
- B. A JAX-RPC handler is created to handle the response from the Web service.

- C. The `ibm_webserviceclient_bnd.xmi` file specify that the invocation is asynchronous.
- D. There is no change in the generated artifacts, only the methods called from the actual client will vary.

Answer: A

Question No : 7

A developer has created a Liberty server in WebSphere Application Server Developer Tools for Eclipse.

How can the developer start the Liberty server from the Servers view using a JRE different from the default JRE?

- A. Open the Runtime Explorer view, select the runtime and click the Properties context sensitive menu item. Change the JRE setting under the Server category in the Properties dialog.
- B. Open the Server Configuration editor by double clicking the server configuration in the Servers view, add a JVM configuration element and specify the JRE location in the Location field.
- C. Open the Server editor by double clicking the server in the Servers view, select the Runtime Environments link and change the JRE setting in the Liberty Profile Runtime Environment dialog.
- D. Open the Server Configuration editor by double clicking the server configuration in the Servers view, add a Variable configuration element with the Name field set to `java.home` and the Value field set to the location of the JRE.

Answer: C

Question No : 8

Which one of the mechanisms CANNOT be used directly by the JAX-WS dynamic APIs for Dispatch or Provider?

- A. Source
- B. Data Source
- C. Input Stream
- D. JAXB Objects
- E. SOAP Message

Answer: C

Question No : 9

A developer would like to create a generic endpoint implementation to handle XML-based Web service and use it to host multiple endpoints. Which of the following annotations would BEST be used to support that Service Implementation Bean?

- A. @Web Method
- B. @Web Service
- C. @Service Mode
- D. @WebServiceProvider

Answer: D

Question No : 10

A developer suspects there is a problem in JAX-B serialization in the client side. Which tool can be used to test the Web Services by bypassing JAXB?

- A. WSDL Explorer
- B. TCP/IP Monitor
- C. Generated Test JSP Client
- D. Universal Test Client (UTC)

Answer: C

Question No : 11

Select the scenario where the specification WS-Make Connection should be used.

- A. To return responses back on a separate connection in a request and response flow. For example, enabling WS-Addressing to specify a new address to deliver a response.
- B. To establish a connection for out-of-band communication with 3rd endpoint. For example, in using WS-Secure Conversation with another business endpoint, a token can

be obtained from a 3rd party provider.

- C. To tunnel through a firewall and establish a back channel for messages to be sent to a previously un-addressable endpoint. For example, with WS-ReliableMessagingreestablishing a connection through a firewall for acknowledgements.
- D. To create a separate connection to an endpoint to gain metadata about an endpoint prior to the initial request. For example, creating a connection to a separate endpoint to retrieve WSPolicy information about how to establish connectivity to a web services endpoint.

Answer: C

Question No : 12

Which IBM Rational Application Developer V7.5 tool can be used to validate the SOAP messages against WS-I standards?

- A. TCP/IP Monitor
- B. Profiling Monitor
- C. Web Services Explorer
- D. Universal Test Client (UTC)

Answer: A

Question No : 13

A media company would like to provide an online Web service to encode video in a different format for a fee. The encoding could take hours or days to finish based on the length of the video. The client machine may be restarted after submitting the request and should be able to receive the encoded video. Web services client implementation: 1) Asynchronous invocation 2) Wire level asynchronous invocation 3) Using two one way messages, one for request and one for response Quality of service: a) WS-Reliable Messaging b) WS-Reliable Messaging with Transaction enabled (enableTransactionalOneWay) What is the correct way to call the Web service including the qualities of service?

- A. (1) with (a)
- B. (1) with (b)
- C. (2) with (a)