

# IBM

## Exam C9550-412

**IBM Business Process Management Express or Standard Edition  
V8.5.5, BPM Application Development**

Version: 7.0

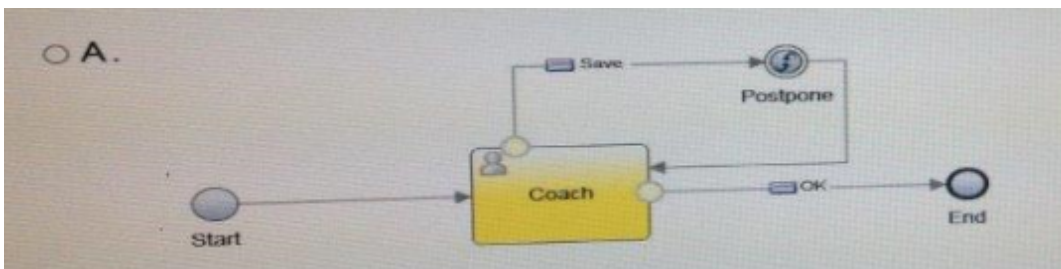
**[ Total Questions: 60 ]**

**Question No : 1**

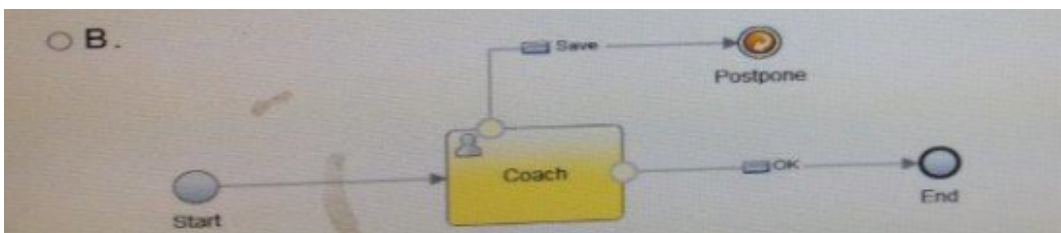
A BPM Application developer is creating a client-side human service. The developer must create a save button that saves the coach fields so the user can return to their task at a later date.

Which service meets the requirements?

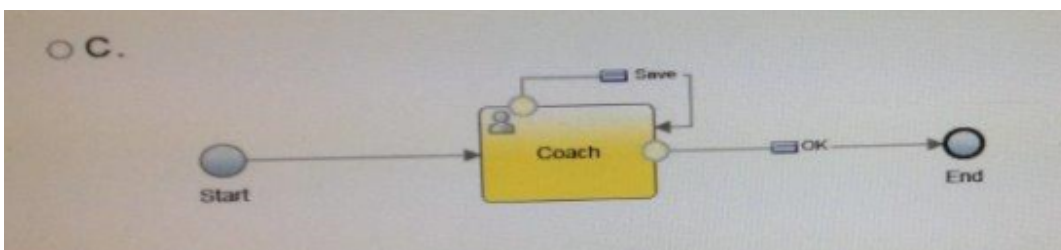
A)



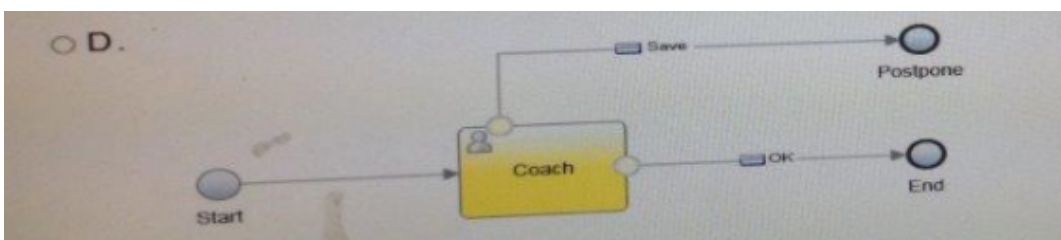
B)



C)



D)



A. Exhibit A

- B. Exhibit B
- C. Exhibit C
- D. Exhibit D

**Answer: A**

### Question No : 2

A BPM Application developer is creating a coach view that allows other developers to reuse this coach view to create a flow on the Diagram of a Human Service.

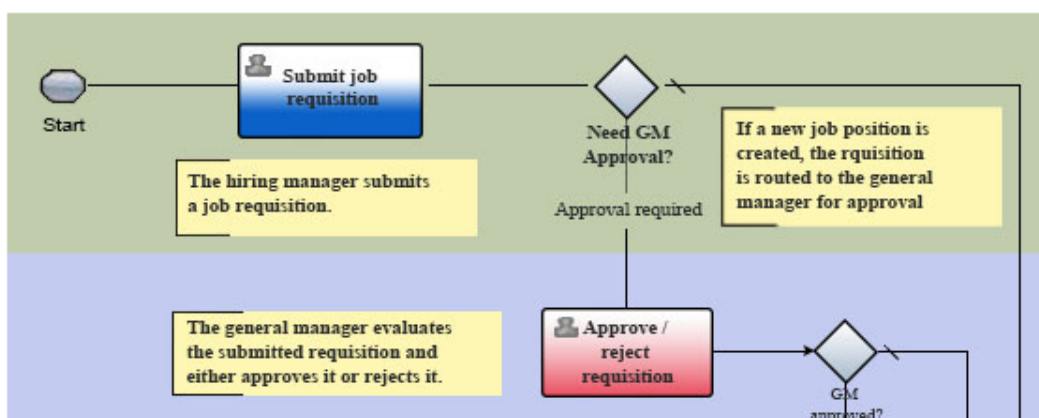
How must the BPM application developer configure the coach view?

- A. Enable the "Can Fire a Boundary Event" option in the Overview tab.
- B. Enable the "Prototype-level Event Handlers" option in the Overview tab.
- C. Create the following change event handler in the Behavior tab: `this.contextthgger();`
- D. Create an IMD dependency to the `com.ibm.bpm.coach.controls/utilities` Module in the behavior tab.

**Answer: C**

### Question No : 3

A new business process application is being created with several business process definitions (BPD). One of them is shown in the exhibit:



The following requirement should be met:

-  The first user task should be assigned automatically to the user who starts this top

level BPD.

✍ A BPM application developer is creating a new business process application that is required to have no deprecated features.

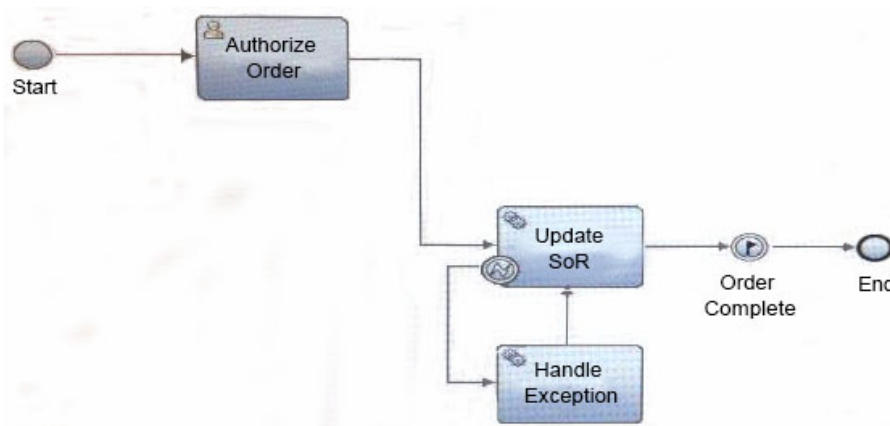
How should the BPM application developer configure the assignment for this user task?

- A. Select **Last User** in the **User Distribution** field
- B. Select **Last User in Lane** in the **Assign to** field
- C. Select **Last User** in the **User Distribution** field and **Last User in Lane** in the **Assign to** field
- D. Select **Custom** in the **Assign to** field and write `tw.system.step.user` into the **Expression** field

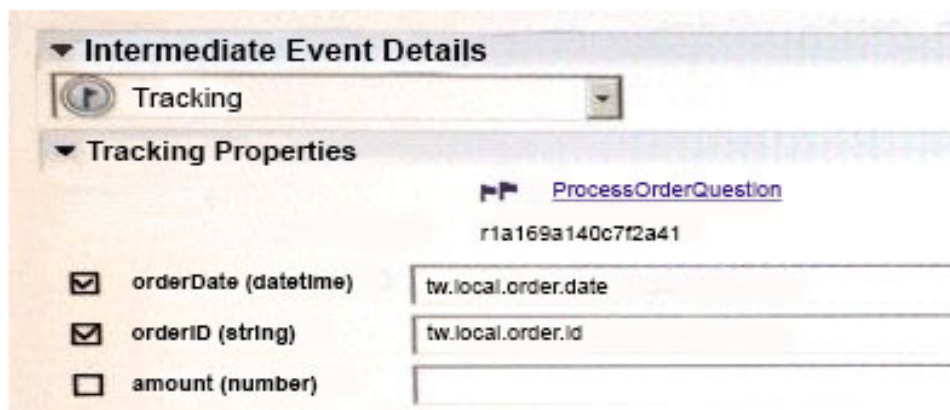
**Answer: D**

#### Question No : 4

ABPM application developer needs to collect some business information and create a tracking group for the following business process definition (BPD).



The BPM application developer adds a tracking point to the BPD and associates some process variables to this group:



After running some tests, the BPM application developer notices that information defined in the tracking properties is not collected in the performance data warehouse after the instance is completed.

What should the BPM application developer do to fix the problem?

- A. Set "Enable Tracking" and "Enable Auto-tracking" in the BPD.
- B. Set "Enable Tracking" in the BPD and then update tracking definitions.
- C. Set "Enable Tracking" and "Enable Auto-tracking" in the BPD and then update tracking definitions.
- D. Associate a process variable to the amount field in "Tracking Properties" and update tracking definitions.

**Answer: A**

#### Question No : 5

A BPM Application developer is creating a case that call center agents can use when a customer wants to dispute a credit card transaction. The call center supervisors need a separate user interface for the case that is viewable only by call center supervisors.

What should BPM application developer do to support the requirement?

- A. Assign "Call Center Supervisors" team as a Manager Team for the case
- B. Duplicate the default user interface and assign the "Call Center Supervisors" team as a Manager Team for the case
- C. Create an Instance Owners user interface and assign the "Call Center Supervisors" team in the "Instant Owners" team
- D. Create a Launch UI Default user interface and assign the "Call Center Supervisors" team in the "Expose to start" option in the Overview page of the case.

**Answer: B**

#### Question No : 6

A BPM application developer has enabled auto-tracking for a car tire production and run the update tracking definitions command in process designer. During a playback, the BPM application developer is asked to rename the auto-tracking group from "at1392376481525" to "tireProduction" and run update tracking definitions again.

When building a custom dashboard, what resource should the BPM application developer

use to retrieve the data?

- A. The "tireProduction" view for the "tireProduction" table.
- B. The "tireProduction" view for the "at1392376481525" table.
- C. The "at1392376481525" view for the "tireProduction" table.
- D. The "at1392376481525" view for the "at1392376481525" table.

**Answer: B**

**Question No : 7**

A BPM application developer is using a toolkit as a dependency for a process application. During testing, a bug is identified within a service contained in the toolkit.

To fix the bug and get the fix applied to the process application, what must application developer do?

Fix the bug in the toolkit, and:

- A. take a snapshot of the toolkit
- B. take a snapshot of the process application and then take a snapshot of the toolkit
- C. take a snapshot of the toolkit, and then upgrade the version of toolkit in the process application
- D. the fix is automatically applied to the process application

**Answer: A**

**Question No : 8**

A mortgage company designates loan applicants with credit score above 650 as low risk applicants. The company offers any low risk applicants a loan rate of 4.0. Furthermore, if their loan amount is less than \$200,000, they get a lower rate of 3.0.

How should the BPM application developer implement the business rule using the business action language (BAL)?

○ A. if all of the following conditions are true :  
     - the credit score of applicant is more than 650  
     - the loan amount of applicant is less than 200000,  
 then set loanRate to 3.0;  
 else set loanRate to 4.0;

○ B. if the credit score of applicant is more than 650 and the loan amount of applicant is less than 200000,  
 then set loanRate to 3.0;  
 else set loanRate to 4.0;

○ C. set 'low risk applicant' to an applicant  
     where the credit score of this applicant is more than 650;  
 if the loan amount of 'low risk applicant' is less than 200000  
 then set loanRate to 3.0;  
 else set loanRate to 4.0;

○ D. definitions  
     set 'low risk applicant' to an applicant  
     where the credit score of this applicant is more than 650;  
 if the loan amount of 'low risk applicant' is less than 200000  
 then set loanRate to 3.0;  
 else set loanRate to 4.0;

- A. OptionA
- B. OptionB
- C. OptionC
- D. OptionD

**Answer: C**

### Question No : 9

The BPM process center experiences a CPU spike, affecting the availability of process center for other users. It is suspected that one of the services being tested by the application development team contains an infinite JavaScript loop, though the process center does not have loop detection exception enabled.

Where can the BPM application developer find information to indicate which service might be causing the issue? (choose 2)

- A. Process admin console
- B. Process portal debugger
- C. Browser debugger features
- D. Process designer inspector
- E. WebSphere application server log

**Answer: A,B**

### Question No : 10