

EMC

Exam E20-005

Backup Recovery Systems and Architecture Exam

Version: 6.0

[Total Questions: 120]

Question No : 1

What is a characteristic of the dependent write I/O principle?

- A. An application will not issue a write I/O until a prior related write I/O has completed
- B. An application will issue another read I/O before the prior related write I/O has completed
- C. An application will issue another write I/O before the prior related write I/O has completed
- D. An application will not issue a read I/O until a prior related write I/O has completed

Answer: A

Question No : 2

How can you ensure that backup data stored in tapes offsite can be read only by authorized parties?

- A. Compress the data using the LZO algorithm
- B. Encrypt the data using a secure encryption key
- C. Set permissions on the save sets on the volumes
- D. Transfer data over a secure, internal WAN

Answer: B

Question No : 3

What is an advantage of source-based deduplication over target-based deduplication?

- A. Reduced network bandwidth requirement
- B. Faster replication
- C. Faster recovery
- D. Reduced client resource requirement

Answer: A

Question No : 4

Which RAID level best describes parallel access with dedicated parity?

- A. 3
- B. 4
- C. 5
- D. 6

Answer: A

Question No : 5

Which setting mismatch in a customer environment can result in performance degradation of the network?

- A. Duplex
- B. Flow control
- C. Buffer
- D. Frame size

Answer: A

Question No : 6

A customer is moving data from a backup disk to tape, which will later will be stored offsite.

What is this process called?

- A. Cloning
- B. Staging
- C. Aging
- D. Mirroring

Answer: B

Question No : 7

Which type of backup should be used to create a backup copy offline without disrupting I/O

operations on a production volume?

- A. Cumulative backup
- B. Incremental backup
- C. Full backup
- D. Synthetic full backup

Answer: D

Question No : 8

What is a characteristic of Common Internet File System?

- A. Uses file and record locking
- B. Allows multiple users to simultaneously edit files
- C. Loses changes to files that were open prior to interruption
- D. Uses a complex file-naming scheme

Answer: A

Question No : 9

In a backup environment, what is the function of the client software component?

- A. Coordinates the backup
- B. Initiates recoveries
- C. Stores tracking information
- D. Writes data to a backup device

Answer: D

Question No : 10

A backup environment has 20 GB of data with 10 percent initial commonality. The data is backed up to a target-based deduplication system on a full, every day backup schedule. After the first backup, 5 GB of data is changed. The same data set is backed up every day.

How much data is sent over the network on the first and second backups?

- A. 20 GB for the first backup; 20 GB for the second backup
- B. 20 GB for the first backup; 5 GB for the second backup
- C. 18 GB for the first backup; 4.5 GB for the second backup
- D. 18 GB for the first backup; 18 GB for the second backup

Answer: A

Question No : 11

Which backup media characteristic allows backups and restores to run simultaneously?

- A. Random access
- B. Interleaving
- C. Mirroring
- D. Multiplexing

Answer: A

Question No : 12

Which EMC product performs inline data deduplication?

- A. Data Domain
- B. Avamar
- C. NetWorker
- D. HomeBase

Answer: A

Question No : 13

A customer has a requirement to restore operations within two hours after a disaster.

What is this time period called?

- A. Recovery time objective (RTO)
- B. Retention period
- C. Recovery point objective (RPO)
- D. Backup window

Answer: A

Question No : 14

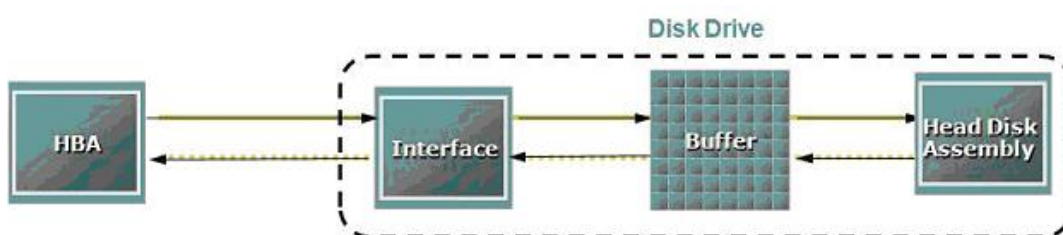
Which Microsoft Volume Shadow Copy Service component is responsible for the creation and maintenance of shadow copies?

- A. Provider
- B. Requestor
- C. Writer
- D. Backup application

Answer: A

Question No : 15

Refer to the exhibit.



When determining disk drive performance, between which two components is the internal transfer rate measured?

- A. Interface and buffer
- B. HBA and interface
- C. Buffer and head disk assembly
- D. Interface and head disk assembly

Answer: C

Question No : 16

A customer has a SAN-based storage system with extra storage capacity available. The customer wants to make this storage available to other hosts over the LAN.

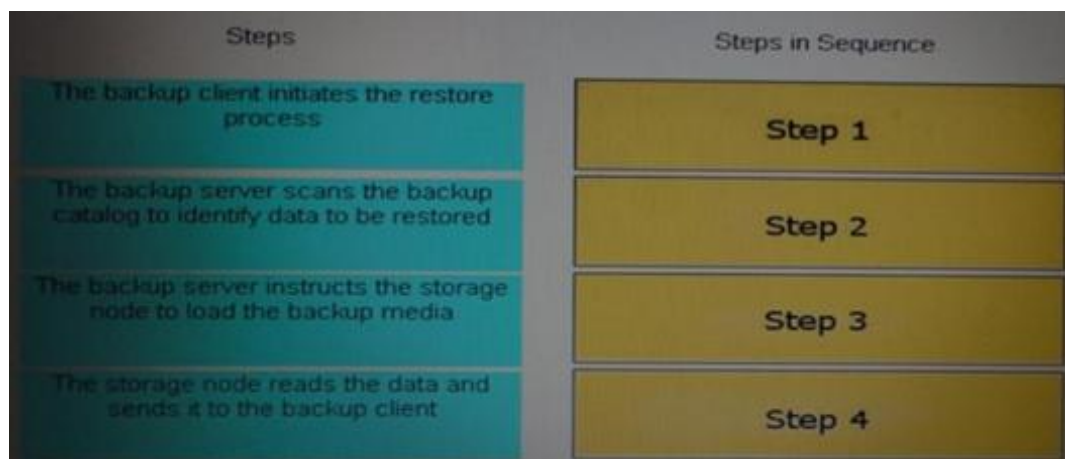
What is your recommendation?

- A. Integrated NAS
- B. NAS gateway
- C. NDMP 2-way
- D. NDMP 3-way

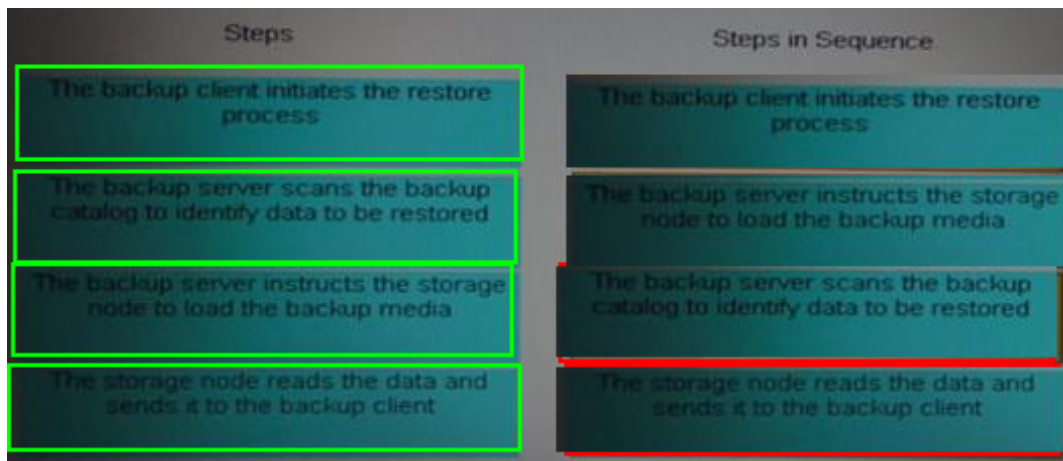
Answer: B

Question No : 17 DRAG DROP

What is the sequence of events in a restore process?



Answer:


Question No : 18

What is a benefit of using EMC NetWorker modules?

- A. Ensures consistent backups
- B. Improves tape utilization ratio
- C. Organizes data on the backup media for fast recovery
- D. Performs cold database backups

Answer: B

Question No : 19

A full backup of a file system is performed once a week on Saturday and cumulative backups are performed on all other days. Backups start at 20:00 with a two-hour window. Data on the file system changes every day.

How many backups are required to perform a full system restore as of Friday morning?

- A. 2
- B. 6
- C. 1
- D. 7

Answer: A