

HP

Exam HP0-D09

Implementation HPConverged Infrastructure Solutions

Version: 6.0

[Total Questions: 133]

Topic 1, Volume A**Question No : 1 - (Topic 1)**

What can enabling "iLO event pass-thru" for event monitoring do?

- A. increase workload for the iLO
- B. enable iLO event collection by the OS of the server
- C. duplicate the events generated for a server
- D. enable OA to collect all iLO events in a single log

Answer: C

Question No : 2 - (Topic 1)

What must be configured or changed in order to enable automated rehosting of virtual or physical servers in the Converged Infrastructure environment?

- A. resource thresholds
- B. storage capacity watermark
- C. virtual swap memory setting
- D. swap file storage location

Answer: A

Question No : 3 - (Topic 1)

Which elements are required for building a disaster recovery solution using HP Matrix OE, if HP BladeSystem and HP EVA are already installed? (Select three.)

- A. HP Insight Recovery Management
- B. HP Application Recovery Manager
- C. HP Business Copy EVA
- D. HP Replication Solutions Manager EVA
- E. HP Continuous Access EVA

Answer: A,D,E

Question No : 4 - (Topic 1)

What does the Central Management Server (CMS) use to initiate and broker the migration process that is required for Insight Control server migration capability?

- A. FCoE
- B. HPoncfg
- C. PgAP
- D. iSCSI

Answer: D

Question No : 5 - (Topic 1)

Which HP product delivers scale out, excellent performance, and a modular storage infrastructure?

- A. HP EVA 6400
- B. HP P410i
- C. HP P2000 MSA
- D. HP X9000

Answer: D

Question No : 6 - (Topic 1)

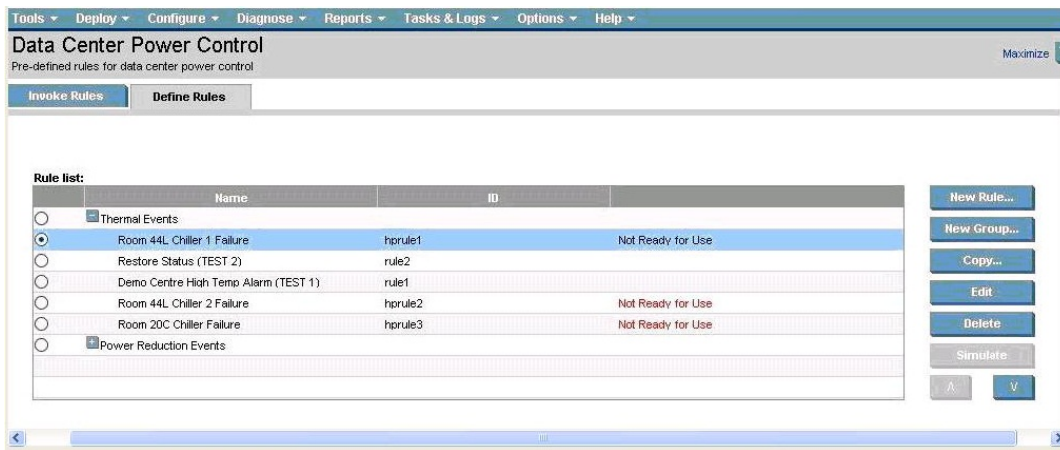
How is Dynamic Power Capping achieved?

- A. by disabling cores of a processor when a cap is reached
- B. by raising the p-state of a processor when a cap is reached
- C. by increasing the clock-cycle of a processor when a cap is reached
- D. by lowering the p-state of a processor when a cap is reached

Answer: D

Question No : 7 - (Topic 1)

Click the Exhibit button.



The customer sees that the Simulate button for the Room 44L Chiller 1 failure rule is disabled in the Insight Control Data Center Power Control screen. What should you do to enable the simulate function for the Room 44L Chiller 1 failure rule?

- A. You should copy this rule to a new rule and click on the Simulate button for the new rule.
- B. You should edit the rule and mark the Ready for Use button.
- C. A rule with the status Not Ready for Use must be at the bottom of the rule list. Therefore, you must use the down arrow button to move the rule to the bottom of the list.
- D. The rule has been simulated before and failed the simulation. Therefore, you must edit the rule, remove the errors, and then simulate the rule again.

Answer: B

Question No : 8 - (Topic 1)

An engineer is installing BL460 G7 Server Blades and Virtual Connect FlexFabric modules in a c7000 as part of an HP Converged Infrastructure solution. Which external ports can be used for Fibre Channel connectivity?

- A. the first 2 ports
- B. the last 2 ports
- C. the first 4 ports
- D. the last 4 ports

Answer: C

Question No : 9 - (Topic 1)

A feature of HP Insight Control Virtual Machine Management minimizes downtime by performing which function?

- A. relocating virtual machines before hardware failures occur
- B. relocating virtual machines after hardware failures occur
- C. relocating hosts before hardware failures occur
- D. relocating hosts after hardware failures occur

Answer: A

Question No : 10 - (Topic 1)

You have completed installing a number of Virtual Connect (VC) based enclosure installations and want to capture the most recent enclosure and VC information of all the enclosures. What is the quickest way to do this?

- A. Connect to the Onboard Administrator GUI and capture an enclosure inventory, then connect to Virtual Connect Manager (VCM) via SSH and collect a 'show all' output.
- B. Use the Virtual Connect Support Utility (VCSU) with the 'collect' option.
- C. Use VCSU with the 'healthcheck' option.
- D. Connect to the Onboard Administrator GUI and capture an enclosure inventory, then connect to Virtual Connect Manager (VCM) via Telnet and collect a 'show all' output.

Answer: B

Question No : 11 - (Topic 1)

In a BladeSystem Matrix environment, your logical servers are running low on usable storage capacity. What can you do on the HP StorageWorks EVA4400 SAN array that was attached to the matrix enclosure? (Select two.)

- A. Add additional disk drives and disk enclosure if needed.
- B. Change the disk failure protection level to double on the EVA4400.
- C. Group new disk drives into the existing disk group.
- D. Increase the storage raw capacity by joining two or more units of EVA4400 with the MPX200 router.
- E. Change the vRAID level of the virtual disk from level 5 to level 1.

Answer: A,C

Question No : 12 - (Topic 1)

When using Insight Control Performance Management and viewing a server availability report, what does %Minor indicate?

- A. percentage of time that a server is up and available for monitoring
- B. percentage of overall performance that might be approaching a bottleneck condition
- C. percentage of overall performance that is in a bottleneck condition
- D. percentage of overall performance that is satisfactory with no impending or existing bottleneck condition

Answer: B

Question No : 13 DRAG DROP - (Topic 1)

Place the steps in the correct order to patch the operating system in virtual machine templates used in BladeSystem Matrix.

Place the steps in the correct order to patch the operating system in virtual machine templates used in BladeSystem Matrix.

		Steps
Place Step 1 here	Edit the template property	
Place Step 2 here	Convert VM template to VM	
Place Step 3 here	Convert VM to VM template	
	Patch the operating system	

Answer:

Place the steps in the correct order to patch the operating system in virtual machine templates used in BladeSystem Matrix.

		Steps
Convert VM template to VM	Edit the template property	
Patch the operating system	Convert VM template to VM	
Convert VM to VM template	Convert VM to VM template	
	Patch the operating system	

HP HP0-D09 : Practice Test

Question No : 14 DRAG DROP - (Topic 1)

Place each HP Converged Infrastructure element next to its description.

Place each HP Converged Infrastructure element next to its description.

Descriptions

(place here)	enables network connections and capacity to be fully virtualized from the edge to the core
(place here)	creates an intelligent, energy-aware environment across IT and facilities to optimize and reduce energy use
(place here)	an ability to automate the provisioning and recovery of resources within a pool from both the provider-side and the requestor-side
(place here)	created from purpose-built systems to enable adaptive, shared capacity that can be combined, divided, and repurposed

Converged Infrastructure Elements

Virtual resource pool	FlexFabric	Data Center Smart Grid	Matrix OE
-----------------------	------------	------------------------	-----------

Answer:

Place each HP Converged Infrastructure element next to its description.

Descriptions

Virtual resource pool	enables network connections and capacity to be fully virtualized from the edge to the core
FlexFabric	creates an intelligent, energy-aware environment across IT and facilities to optimize and reduce energy use
Matrix OE	an ability to automate the provisioning and recovery of resources within a pool from both the provider-side and the requestor-side
Data Center Smart Grid	created from purpose-built systems to enable adaptive, shared capacity that can be combined, divided, and repurposed

Converged Infrastructure Elements

Virtual resource pool	FlexFabric	Data Center Smart Grid	Matrix OE
-----------------------	------------	------------------------	-----------

Question No : 15 - (Topic 1)

Which functions does HP SIM provide? (Select three.)

- A. continuous device monitoring
- B. HP systems software update and tracking
- C. server deployment
- D. inventory reporting
- E. migration of old servers to new ProLiant, maintaining operating system, configuration, and data

Answer: A,B,D

Question No : 16 - (Topic 1)

Which tool can you use to configure a shared data store for VMware hypervisor cluster?

- A. VMware vCenter server
- B. VMware hypervisor host profile
- C. IO storage pool entry
- D. Insight Control for VMware vCenter server

Answer: A

Question No : 17 - (Topic 1)

Which HP Power Regulator setting allows reduced power consumption with little or no impact to performance?

- A. Static Low Power mode
- B. Static High Performance mode
- C. Dynamic Power Savings mode
- D. OS Control mode

Answer: C

Question No : 18 DRAG DROP - (Topic 1)

The HP Virtual Connect FlexFabric 10Gb/24 port module is in Ethernet mode. Match each port status with the correct color indicator.

HP HP0-D09 : Practice Test

The HP Virtual Connect FlexFabric 10Gb/24 port module is in Ethernet mode. Match each port status with the correct color indicator.

Port Status

(place here)	Port is configured and operating as an uplink port connected to a data center network.
(place here)	Port is operating as a stacking link interconnecting Virtual Connect Modules.
(place here)	Ethernet SFP module is invalid.
(place here)	Unconfigured
(place here)	Port Located (PID)
(place here)	Port is configured as a mirror port.

Color of Port Status Indicator

Purple Flashing	Green	Off
Amber Flashing	Blue	Amber

Answer:

The HP Virtual Connect FlexFabric 10Gb/24 port module is in Ethernet mode. Match each port status with the correct color indicator.

Port Status

Green	Port is configured and operating as an uplink port connected to a data center network.
Amber	Port is operating as a stacking link interconnecting Virtual Connect Modules.
Amber Flashing	Ethernet SFP module is invalid.
Off	Unconfigured
Blue	Port Located (PID)
Purple Flashing	Port is configured as a mirror port.

Color of Port Status Indicator

Purple Flashing	Green	Off
Amber Flashing	Blue	Amber

Question No : 19 - (Topic 1)

Your customer has a Converged Networking solution with an HP Virtual Connect and Physical Instance enabled network card. The customer asks you to change the vMotion network speed. What should you do to accomplish this?

- A. Change the Required Network Speed within a local VMware Console
- B. Change the Required Speed with VMware vSphere client
- C. Change the Required Network Speed within Virtual Connect Manager
- D. Change the Required Network Speed using Onboard Administrator GUI

Answer: C

Question No : 20 - (Topic 1)

Which virtualization technique does not need to trap and translate all privileged layer instructions between the guest OS and the actual server hardware?

- A. binary translation
- B. paravirtualization
- C. hosted OS, application-layer abstraction
- D. hardware-assisted virtualization

Answer: B

Question No : 21 - (Topic 1)

What is the maximum number of c7000 enclosures that you can stack together in a single Virtual Connect domain?

- A. 2
- B. 4
- C. 8
- D. 16

Answer: B

Question No : 22 - (Topic 1)

A current multi-enclosure Virtual Connect (VC) domain contains four BladeSystem enclosures cabled together for a single VC domain. An additional BladeSystem enclosure needs to be added to the environment. What will provide an optimized and fault tolerant configuration with room for future expansion?