

HP

Exam HP0-M34

HP Server Automation 9.x. Software

Version: 6.0

[Total Questions: 68]

Question No : 1

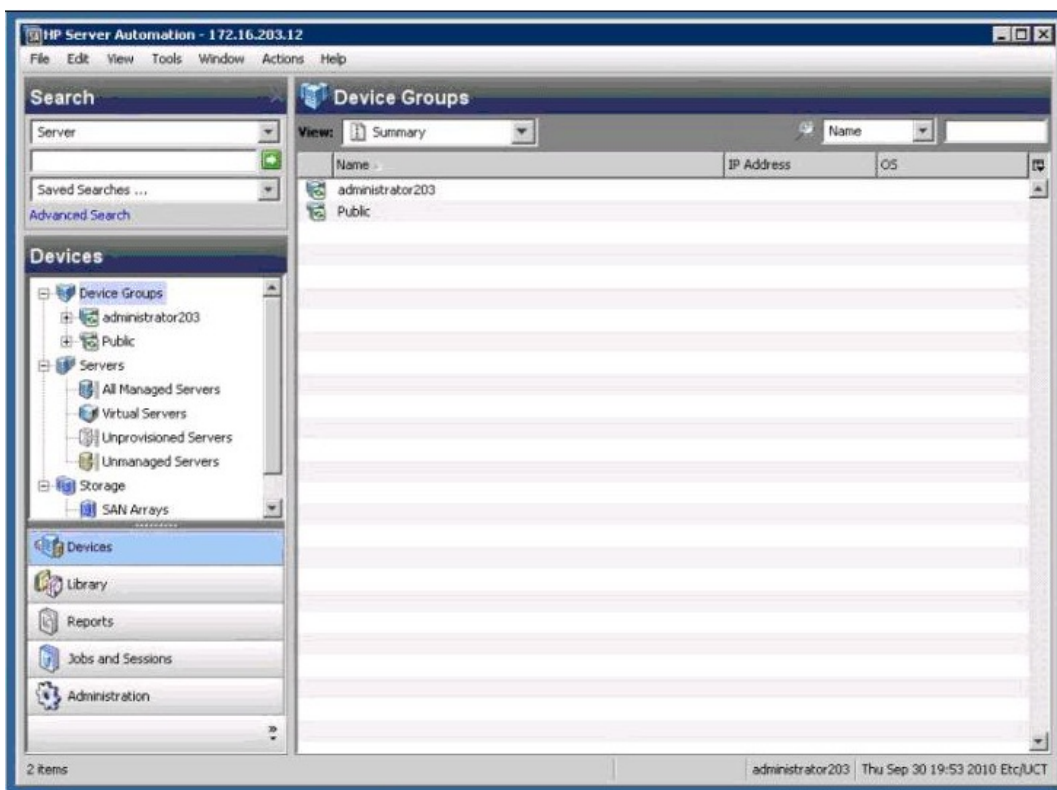
Which type of architecture does the term Multimaster Mesh describe?

- A. the core component bundles distributed on multiple servers
- B. multiple, coordinated Server Automation cores distributed across the network
- C. multiple satellite servers configured to fail over to a single core
- D. a core server running on multiple cluster nodes distributed across the network

Answer: B

Question No : 2

Click the Exhibit button.



Which user interface is shown in the exhibit?

- A. HP Server Automation Web Client
- B. HP Server Automation Global Shell Client
- C. HP Server Automation Infrastructure Client
- D. HP Server Automation Client

Answer: D

Question No : 3

How do the core and the agent communicate?

- A. SA bus
- B. Global Shell
- C. SSL tunnel
- D. SSH tunnel

Answer: C

Question No : 4

Which Application Deployment Manager application components require explicit rollback and undeploy instructions for removal?

- A. code components
- B. application configurations
- C. packages from the Server Automation library
- D. Operations Orchestration flows

Answer: D

Question No : 5

The agent communications test can only be run from which HP Server Automation component?

- A. SA Client
- B. SA Web Client
- C. Global Shell
- D. Core CLI

Answer: B

HP HP0-M34 : Practice Test

Question No : 6

Which HP Server Automation component is found on a satellite?

- A. Software Repository Cache
- B. Infrastructure Gateway
- C. Model Repository
- D. Data Access Agent

Answer: A

Question No : 7

What is the best description of the communication between the core and the managed servers?

- A. Primary - Secondary
- B. Multi - Master
- C. Server - Agent
- D. Client - Server

Answer: C

Question No : 8

Which core component bundle is often installed on multiple servers in the same core for redundancy and load balancing purposes?

- A. Multimaster Infrastructure
- B. Model Repository
- C. OS Provisioning
- D. Slice

Answer: D

Question No : 9

HP HPO-M34 : Practice Test

There is a set of components that make up one installation of HP Server Automation (SA). These components may be on one server or spread across multiple servers. In SA, what is this group of components running on one or more servers called?

- A. core
- B. infrastructure
- C. satellite
- D. multimaster

Answer: A

Question No : 10

Which reports exist in the HP Server Automation Client Reports tab?

- A. SAR reports
- B. Multimaster reports
- C. Virtualization reports
- D. Job reports

Answer: C

Question No : 11

What is a server compliance status based on? a server? compliance status based on?

- A. agent status
- B. Compliance policies
- C. Corporate IT policies
- D. server best practices

Answer: B

Question No : 12 DRAG DROP

Click the Task button. Match each compliance icon with its description.