

HP

Exam HP0-S27

Implementing HP Blade System Solutions

Version: 6.4

[Total Questions: 243]

Topic 1, Volume A**Question No : 1 - (Topic 1)**

When using a c7000 enclosure with six BL680c Server Blades installed, what is the maximum number of StorageWorks SB1760c Tape Blades that can be installed?

- A. 1
- B. 2
- C. 4
- D. 6
- E. 8

Answer: B

Question No : 2 - (Topic 1)

Which type of mezzanine cards are supported by the BL860c? (Select two.)

- A. Type 1
- B. Type 2
- C. Type 3
- D. Type 4
- E. Type 5

Answer: A,B

Question No : 3 - (Topic 1)

What are two results of defining a shared uplink set when using Virtual Connect Manager network setup wizard? (Select two.)

- A. enables multiple ports to be included to support port aggregation and link failover with a consistent set of VLAN tags
- B. enables multiple external Virtual Connect modules to communicate through any external port without the use of stacking cables
- C. identifies Virtual Connect Ethernet module uplinks that carry multiple networks over the same cable

D. defines an optimized private communications path for server blades installed in non-adjacent enclosure bays

Answer: A,C

Question No : 4 - (Topic 1)

Which power management settings can be configured for a c7000 enclosure? (Select three.)

- A. Not Redundant
- B. Active / Standby
- C. AC Redundant
- D. Power Supply Redundant
- E. UPS protected

Answer: A,C,D

Question No : 5 DRAG DROP - (Topic 1)

Click the Task button. You want to configure HP SIM to periodically compare the configuration of managed nodes. Place the recommended steps for accomplishing this in the correct order.

Drag and Drop

You want to configure HP SIM to periodically compare the configuration of managed nodes. Place the recommended steps for accomplishing this in the correct order.

place Step 1 here	Select server and click on Options > Data Collection
place Step 2 here	Create second data set
place Step 3 here	Select baseline and run report
place Step 4 here	Select "Append new data set" and create initial collection
place Step 5 here	Select the server and click on Reports-Snapshot comparison

Answer:

Drag and Drop

You want to configure HP SIM to periodically compare the configuration of managed nodes. Place the recommended steps for accomplishing this in the correct order.

Select server and click on Options > Data Collection	Select server and click on Options > Data Collection
Select "Append new data set" and create initial collection	Create second data set
Create second data set	Select baseline and run report
Select the server and click on Reports-Snapshot comparison	Select "Append new data set" and create initial collection
Select baseline and run report	Select the server and click on Reports-Snapshot comparison

Question No : 6 - (Topic 1)

A system administrator wants to access HP SIM via a browser. Which URL should be typed into the browser address bar to access the HP SIM login page?

- A. http://<MachineName>:2301
- B. http://<MachineName>:50000
- C. https://<MachineName>:2381
- D. https://<MachineName>:50000

Answer: D

Question No : 7 - (Topic 1)

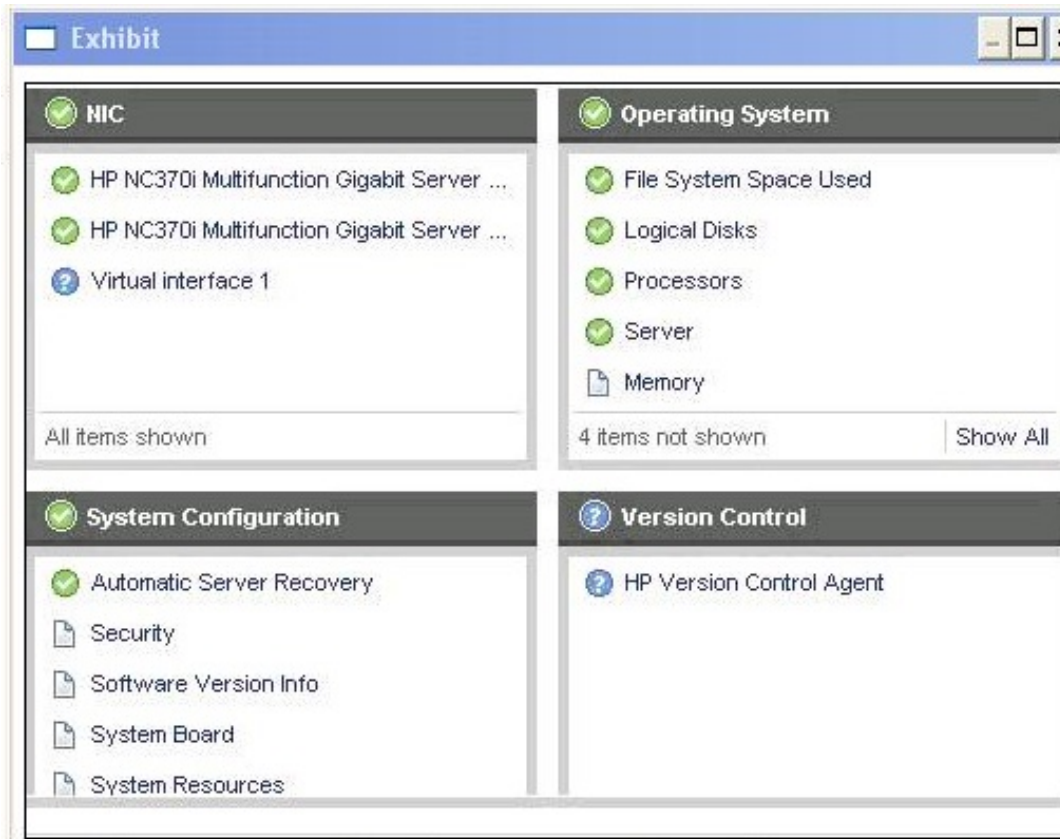
Which features have been enhanced in the 6.0 release of HP SIM? (Select two.)

- A. virus detection
- B. Onboard Administrator integration
- C. License Manager
- D. storage essentials
- E. reporting

Answer: C,E

Question No : 8 - (Topic 1)

Click the Exhibit button.



A customer asks about the blue question mark next to Version Control, which is shown in the exhibit. What does the blue question mark indicate?

- A. HP Version Control is not up to date.
- B. HP Version Control Agent is not configured.
- C. HP SIM is running in third-party compatibility mode.
- D. HP SIM events need to be cleared.

Answer: B

Question No : 9 - (Topic 1)

Which VMware product enables IT organizations to provide self-service provisioning and management capabilities to internal teams?

- A. VMware Site Recovery Manager
- B. VMware Lab Manager
- C. VMware View
- D. VMware vCenter

Answer: B

Question No : 10 - (Topic 1)

An incorrect IP address has been configured on your blade switch. How do you correct this problem?

- A. Update your firmware on the Onboard Administrator.
- B. Run erase from SmartStart using Virtual Media.
- C. Remove and then replace the blade switch in the enclosure.
- D. Use the Command Line Interface through the Onboard Administrator.

Answer: D

Question No : 11 - (Topic 1)

You are working on a rack containing three c7000 enclosures. What provides you with the most information about enclosure status?

- A. Insight Display
- B. Integrated Management Log
- C. HP System Management Homepage
- D. Integrated Lights Out Log

Answer: A

Question No : 12 - (Topic 1)

Which interconnect module provides 16 uplink ports and 16 downlink ports, all capable of supporting 40Gbps bandwidth?

- A. HP BLc 4X QDR IB Switch for HP BladeSystem c-Class

- B. Cisco Catalyst Blade Switch 3120G/X for HP BladeSystem c-Class
- C. HP StorageWorks 3Gb SAS BL Switch for HP BladeSystem c-Class
- D. HP ProCurve 6120XG for HP BladeSystem c-Class

Answer: A

Question No : 13 - (Topic 1)

What may be needed to connect a SB40c with a full-height server?

- A. PCI Expansion Blade
- B. FC mezzanine card
- C. Flex10 Virtual Connect card
- D. PCI Express mezzanine pass-thru card

Answer: D

Question No : 14 - (Topic 1)

What should be identified as part of a troubleshooting action plan?

- A. opportunities for additional products and services
- B. specific root causes for the specified mode of failure
- C. current OS and virtualization solutions supported by HP
- D. scalability requirements and planned growth

Answer: B

Question No : 15 - (Topic 1)

Which HP Care Pack Service is categorized as High Availability?

- A. Proactive Select
- B. Proactive 24
- C. Support Plus 24
- D. Critical Service

Answer: D

Question No : 16 - (Topic 1)

Which key benefits are provided by HP UPS units? (Select three.)

- A. protection from power spikes
- B. increased power efficiency
- C. power conversion to DC output
- D. reduced noise and heat
- E. increased uptime

Answer: A,B,E

Question No : 17 - (Topic 1)

A customer decides to use an MSA2000sa as additional storage for the storage blades in their enclosure. Which components are required as part of the enclosure solution to enable this functionality? (Select two.)

- A. blades with embedded P400 Controllers
- B. blades with P700 Controller mezzanine cards
- C. an HP StorageWorks 3Gb SAS BL Switch
- D. an HP InfiniBand Switch
- E. an HP StorageWorks 600 Modular Disk System

Answer: B,C

Question No : 18 - (Topic 1)

Which resource can be used to determine total cooling requirements for a proposed HP BladeSystem solution?

- A. Insight Display
- B. Onboard Administrator
- C. Product Bulletin
- D. BladeSystem Power Sizing Tool

E. Performance Quick Reference Tool**Answer: D****Question No : 19 - (Topic 1)**

Which function in the HP P4000 Storage Solution provides online scalability within volumes and across pools?

- A. SAN/iQ Storage Clustering
- B. SAN/iQ Multi-Site SAN
- C. Automatic Data Center Mirroring
- D. Centralized Management Console

Answer: A**Question No : 20 - (Topic 1)**

On a server running HP Data Protector Express the customer wants to connect a c-Class tape blade. Which HP resource is used to install the required driver for the SC44Ge SAS HBA?

- A. HP Library & Tape Tools
- B. HP Software Update Manager
- C. HP StorageWorks Tape CD-ROM
- D. HP Version Control Manager

Answer: C**Question No : 21 - (Topic 1)**

You are integrating a backup solution to a c3000 BladeSystem environment. Data needs to be protected without having to disconnect users or shut down the application. For this environment, you advise the use of HP Data Protector Express. Which databases or applications can be backed up online with this solution? (Select two.)

- A. Oracle

- B. Microsoft Exchange
- C. Microsoft SQL Server
- D. PostgreSQL
- E. Lotus Notes

Answer: B,C

Question No : 22 DRAG DROP - (Topic 1)

Click the Task button. Order the steps for installing ESXi 4.0 on a BL685c G6 Server Blade using internal disks.

Drag and Drop _ □ ×

Order the steps for installing ESXi 4.0 on a BL685c G6 Server Blade using internal disks.

Step 1	place here
Step 2	place here
Step 3	place here
Step 4	place here

Select "Boot from local disk" in the VMware VMvisor Boot Menu	Mount the installation ISO from the Virtual Media option
Press F11 to confirm selections and start installation	Launch the Integrated Remote Console from the Onboard Administrator
Select the disk where ESXi will be installed	Disable "Shared Remote Access" on the iLO

Done

Answer: