

# HP

## Exam HP0-Y31

### Implementing HP Network Infrastructure Solutions

Version: 6.1

[ Total Questions: 144 ]

**Topic 1, Volume A****Question No : 1 - (Topic 1)**

What is an advantage of locating intelligent routing at the edge of an enterprise network instead of only in the core?

- A.** The edge-oriented strategy supports VRRP and MSTP for default gateway redundancy.
- B.** The edge-oriented strategy requires fewer VLANs and networks.
- C.** The edge-oriented strategy simplifies route summarization because only routers must support VLANs only for directly connected users.
- D.** The edge-oriented strategy allows traffic to traverse the network after the routing decisions have been made.

**Answer: D**

**Question No : 2 - (Topic 1)**

When a router must determine which route to include in its route table, when does the router use administrative distance in the decision?

- A.** when the router has learned about multiple routes to the same destination from static configurations or different routing protocols
- B.** when the router has learned about multiple routes from equal-cost paths to the same destination
- C.** when the router is configured with static routes to the same destination that specify the same cost but different next hop router interfaces
- D.** when the router has learned about multiple routes to the same destination from different sources using the same routing protocol

**Answer: A**

**Question No : 3 - (Topic 1)**

Which statement is true about the HP E5400 zl switch Connection-rate Filtering feature?

- A.** It detects threats with both a signature-based engine and an anomaly-based engine that can detect zero day attacks.

- B. A connection-rate ACL can be used to allow some or all inbound traffic through a port that has been throttled or blocked.
- C. It uses sFlow traffic sampling to determine whether traffic activity represents an intrusion.
- D. The connection-rate filter sensitivity is configurable per port, VLAN, or link aggregation group.

**Answer: B**

**Question No : 4 - (Topic 1)**

Which authentication protocol provides mutual authentication for both the supplicant and the authentication server?

- A. Password Authentication Protocol (PAP)
- B. Challenge-Handshake Authentication Protocol (CHAP)
- C. Microsoft CHAP version 2 (MS-CHAPv2)
- D. Extensible Authentication Protocol (EAP)-Message Digest 5 (MD5)

**Answer: C**

**Question No : 5 - (Topic 1)**

Your CIO wants you to investigate IT defense in depth. What does this mean?

- A. You need to purchase a deep-packet inspection Intrusion Prevention System (IPS).
- B. You need to upgrade your firewalls to next-generation firewalls.
- C. You need to plan a comprehensive strategy that addresses security at many layers.
- D. You need to leverage the network infrastructure built-in security features rather than look for appliance-based solutions.

**Answer: C**

**Question No : 6 - (Topic 1)**

Which RADIUS packet includes the Attribute Value Pairs (AVPs) that are applied to customize a user connection?

- A. Access-Update
- B. Access-Request
- C. Accounting-Request
- D. Access-Accept

**Answer: D**

**Question No : 7 - (Topic 1)**

Which mechanism enables two parties to agree on a symmetric key on their own without transmitting it over the network?

- A. Kerberos
- B. Key Distribution Center (KDC)
- C. Diffie-Hellman exchange
- D. Public Key Infrastructure (PKI)

**Answer: C**

**Question No : 8 - (Topic 1)**

A company's help desk requests access to the web interface of various networking devices. The network administrator decides to implement a secure web interface using SSL. Which step is necessary to complete this task on an HP E5400 zl switch?

- A. import the certificate authority certificate
- B. configure RADIUS for user login
- C. generate a self-signed certificate
- D. enable SSH

**Answer: C**

**Question No : 9 - (Topic 1)**

What is one security challenge that is specifically addressed by dynamically refreshing encryption keys?

- A. Users forget their passwords and forget how to connect.
- B. Hackers are more likely to crack a key when they have many frames encrypted with that key.
- C. Asymmetric keys, which are more secure than symmetric keys, must be distributed dynamically.
- D. Static encryptions keys can protect data's privacy, but not its integrity.

**Answer: B**

**Question No : 10 - (Topic 1)**

You must configure an HP E5406 zl switch to be the Owner of a VRID associated with VLAN 20. What must be true of the virtual IP address for the VRID?

- A. It must use an address on a multi-netted VLAN interface.
- B. It must match the router's address on the VLAN 20 interface.
- C. It must use a classless address.
- D. It must match the address assigned to VLAN 20 on the Backup router.

**Answer: B**

**Question No : 11 - (Topic 1)**

How does the Virtual Router Redundancy Protocol (VRRP) improve network availability?

- A. by providing redundant links between edge and core layers
- B. by providing redundant connections to the Internet
- C. by providing backup default gateways for client devices
- D. by supporting the configuration of redundant gateways on VRRP-enabled clients

**Answer: C**

**Question No : 12 - (Topic 1)**

You must provide the capability for the Virtual IP address to be pinged if the Backup router assumes the Master role when the Owner router fails. What is necessary to ensure this operation?

- A. E8206(config)# router vrrp virtual-ip-ping
- B. E8206(config)# vrrp 10 virtual-ip-ping
- C. E8206(config)# router virtual-ip
- D. E8206(config)# router ospf ip-ping

**Answer: A**

**Question No : 13 - (Topic 1)**

You must configure four HP E8212 zl switches and six HP E5406 zl switches to support Multiple Instance Spanning Tree (MSTP) on a network. What must you do to ensure that all the switches join the same MST region?

- A. Configure the switches with identical Uplink Priorities for common switch-to-switch links.
- B. Configure Bridge Priorities on each switch so that all MST instances have a different Root Bridge.
- C. Configure the switches with identical config-names, config-revisions, and VLAN-to-instance mappings.
- D. Configure all switch-to-switch links in each MST instance as tagged members of all VLANs.

**Answer: C**

**Question No : 14 - (Topic 1)**

When the following command is issued at the CLI of an HP E5400 zl switch at factory default settings, which Spanning Tree version is enabled?

```
E5406(config)# spanning-tree
```

- A. STP+
- B. PVST+
- C. MSTP
- D. RSTP

**Answer: C**

**Question No : 15 - (Topic 1)**

Which default gateway redundancy protocol is supported on HP E5400 zl switches?

- A. XRRP
- B. HSRP
- C. VRRP
- D. FSRP

**Answer: C**

**Question No : 16 - (Topic 1)**

An administrator has been tasked with implementing a dynamic port ACL on an HP E5400 zl Series switch. Which statements are true? (Select two.)

- A. It can be implemented as either a standard or extended ACL.
- B. It filters switched IP traffic either inbound or outbound on a designated port.
- C. It requires the use of 802.1X, Web, or MAC authentication services on the switch.
- D. It is used where clients with differing access needs are likely to use the same port.
- E. Configuration of the ACL is done on the switch and then read dynamically by a RADIUS server when a user connects.
- F. It can be applied to either a single physical port or to a link aggregation group.

**Answer: C,D**

**Question No : 17 - (Topic 1)**

An administrator needs to create an ACL to block traffic from 192.168.10.23 to 192.168.10.100, which are on the same subnet. Which type of ACL can be used to meet this need?

- A. a standard ACL applied as Routed ACL (RACL)
- B. an extended ACL applied as a Routed ACL (RACL)
- C. a standard ACL applied as a VLAN ACL (VACL)
- D. an extended ACL applied as a VLAN ACL (VACL)

**Answer: D**

**Question No : 18 - (Topic 1)**

Routed ACLs (RACLs) can be used to filter traffic on an HP E5400 zl switch. Which traffic is inspected?

- A. routed IP traffic arriving on one VLAN and leaving through another VLAN
- B. switched IP traffic moving between ports belonging to the same VLAN
- C. IP traffic entering a physical port, port list, or static trunk
- D. switched IP traffic moving between ports belonging to the same subnet of a multinetted VLAN

**Answer: A**

**Question No : 19 - (Topic 1)**

You have an HP Networking Switch E5400 zl that has two configured VLANs. VLAN 100 has an IP address range of 10.1.100.0/24 and is where the servers reside. VLAN 36 has an IP address range of 10.1.36.0/24 and is where the network clients reside. You configure an ACL with the following entries:

```
permit tcp 10.1.36.0 0.0.0.0 10.1.100.10 255.255.255.255 eq ftp
```

```
permit tcp 10.1.36.0 0.0.0.0 10.1.100.10 255.255.255.255 eq https
```

```
permit tcp 10.1.36.0 0.0.0.0 10.1.100.10 255.255.255.255 eq ssh
```

When you apply this ACL statically to ports in VLAN 36, what is the effect on the clients located in VLAN 36?

- A. They have no access because the ACL is misconfigured.
- B. They cannot access anything in the 10.1.100.0 subnet because IP has not been specified in the ACL.
- C. They are allowed only FTP, HTTPS, and SSH access to 10.1.100.10, but no access elsewhere.
- D. They are allowed only FTP, HTTPS, and SSH access to 10.1.100.10, but full access to everything else in the 10.1.100.0 subnet.

**Answer: C**

**Question No : 20 - (Topic 1)**

HP E5400 zl switches have the ability to mirror traffic from one switch to another. Which action should you take when implementing remote mirroring?

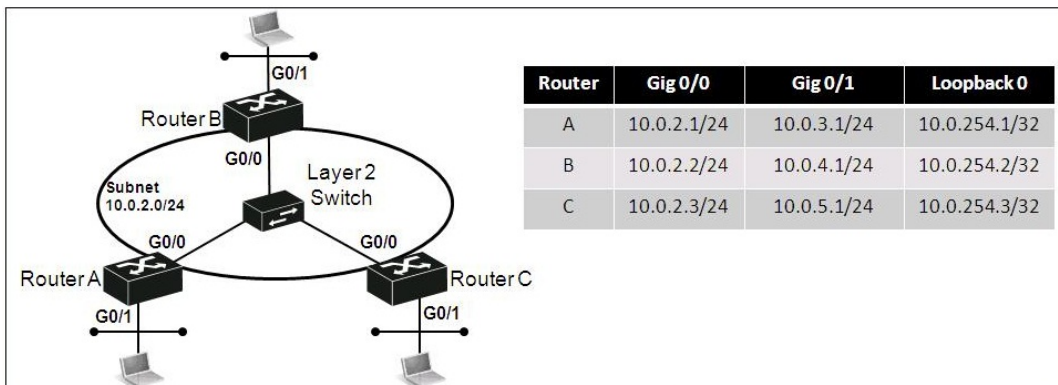


- A. Configure a connection-rate filter.
- B. Enable the instrumentation monitor.
- C. Enable jumbo frames.
- D. Enable a bandwidth limit.

**Answer: C**

**Question No : 21 - (Topic 1)**

Click the Exhibit button.



In the network shown in the exhibit, the routers have been configured with the IP addresses shown in the table, and OSPF has been started. All the networks to which these three routers are connected have been configured in Area 0. Additionally, the following commands have been entered:

Router B

```
interface gigabit 0/0
```

```
ospf dr-priority 0
```

```
quit
```

Router C

```
interface gigabit 0/0
```

```
ospf dr-priority 0
```

```
quit.
```

What will be the final state of the peer relationship between Routers A and C?

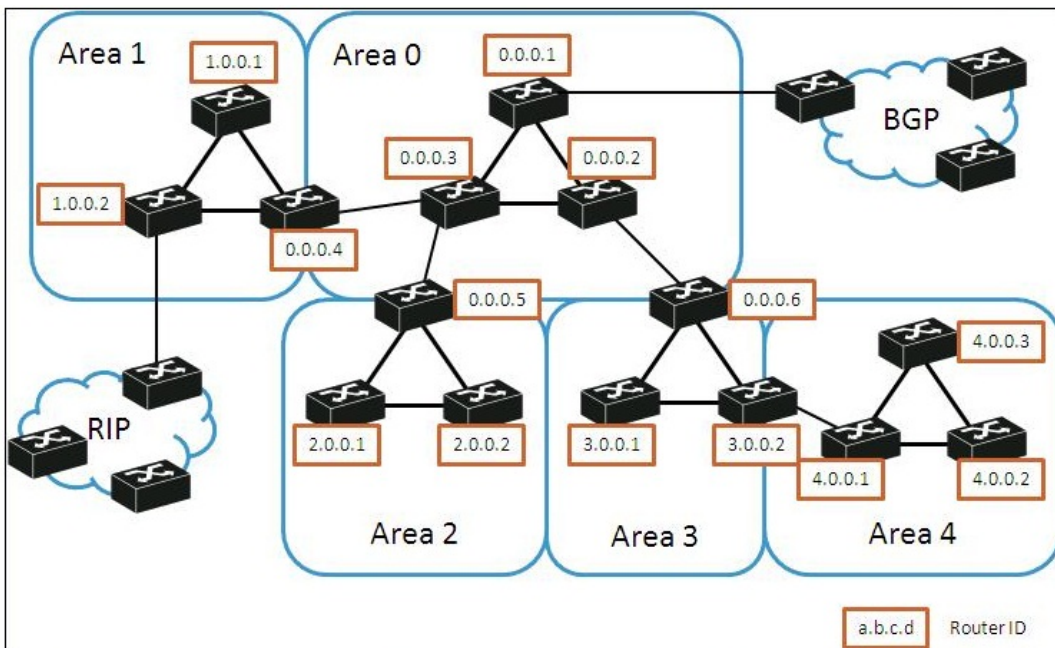
- A. Partial

- B. Full
- C. Two-way
- D. Established
- E. Open

Answer: B

**Question No : 22 - (Topic 1)**

Click the Exhibit button.



Which router creates LSA type 2 external routes?

- A. 0.0.0.1
- B. 4.0.0.1
- C. 1.0.0.2
- D. 0.0.0.5

Answer: A

**Question No : 23 - (Topic 1)**

Which OSPF network type sends its packets to unicast addresses instead of multicast