

HP

Exam HP2-T26

Servicing HP BladeSystem Solutions

Version: 6.1

[Total Questions: 263]

Topic 1, Volume A**Question No : 1 - (Topic 1)**

You want to add memory to an existing BL890c i2 server. The new DIMMs have a different size than the installed ones. Which memory upgrade guideline is correct?

- A. Distribute old and new memory evenly on all blade modules, installing the larger ones first.
- B. Blade modules 1 and 2 must have one DIMM size, and blade modules 3 and 4 must have the other DIMM size.
- C. Blade modules 1 and 3 must have one DIMM size, and blade modules 2 and 4 must have the other DIMM size.
- D. Distribute old and new memory evenly on all blademodules, installing the smaller ones first.

Answer: A

Question No : 2 - (Topic 1)

Your Virtual Connect firmware is older than 1.34. What is the recommended upgrade order for the components in a c7000 enclosure?

- A. Onboard Administrators, Blades, Virtual Connect
- B. Virtual Connect, Blades, Onboard Administrators
- C. Virtual Connect, Onboard Administrators, Blades
- D. Blades, Virtual Connect, Onboard Administrators

Answer: A

Reference:<http://h20000.www2.hp.com/bc/docs/support/SupportManual/c02885443/c02885443.pdf>(page 5, see the bulleted points for the deployments where the operating system has been installed on the servers)

Question No : 3 - (Topic 1)

Why is it considered a best practice to use tools such as HP Smart Update Manager (SUM)

and Virtual Connect Support Utility (VCSU) to deploy firmware components?

- A. These tools check the dependencies and limitations.
- B. The tools are compatible with all versions of firmware.
- C. These are the only tools that can be used to work with Virtual Connect Enterprise Utility (VCEU).
- D. These tools are version compatible by design.

Answer: A

Question No : 4 - (Topic 1)

What should a support engineer use to perform a firmware update to a c-Class PCI Expansion Blade?

- A. OA CLI
- B. HP SmartStart
- C. Firmware Maintenance DVD
- D. OA GUI

Answer: A

Explanation:

Note: Always power off the partner server blade, then update the PCI Expansion blade firmware, then power on the server blade to avoid server lockup.

Firmware for PCI Expansion Blade is not available as a download from hp.com

PCI Expansion Blade firmware is already embedded in the OA firmware code.

From OA CLI run the following command:

```
>SHOW UPDATE
```

```
Device Name
```

```
Location
```

```
Current Version
```

```
New Version
```

```
BladeSystem c7000 Onboard Administrator Tray
```

```
-
```

```
1.2
```

```
1.2
```

```
BladeSystem c7000 Insight Display
```

```
-
```

```
2.2.2
```

2.2.2

BL c-Class PCI Expansion Blade

15

1.20

2.26

HP 4Gb Fibre Channel Pass-thru Module for c-Class

3A

2.4.3

2.10.3

From the above example, PCI Expansion Blade current firmware is 1.20 and available version is 2.00

To update the firmware on PCI Expansion Blade, run the command

>UPDATE DEVICE XX

Where XX stands for location.

Question No : 5 - (Topic 1)

Which Windows command allows you to see the operating system version and system name, manufacturer, and model?

- A. msconfig
- B. uname
- C. msinfo32
- D. winver

Answer: C

Reference:<http://www.netsquirrel.com/msconfig/index.html>

Question No : 6 - (Topic 1)

Which Windows commands allow you to get the operating system's version, build, and service patch level? (Select two.)

- A. winver

- B. msconfig
- C. patch
- D. msinfo32
- E. swlist
- F. uname

Answer: B,D

Question No : 7 - (Topic 1)

Which command should you use to connect to the CLI interface of an HP ProCurve Blade Switch through the Onboard Administrator?

- A. connect interconnect <bay_number>
- B. connect switch <bay_number>
- C. connect <bay_number>
- D. connect server <bay_number>

Answer: A

Reference:<http://h20000.www2.hp.com/bc/docs/support/SupportManual/c01868182/c01868182.pdf>(page 3, Accesing the blade switch from the HP bladesystem onboard administrator)

Question No : 8 - (Topic 1)

A user added a second OA to a c7000 enclosure so the OAs are redundant, however, the modules are not at the same firmware level. What is an easy way to bring them to the same firmware version?

- A. Use HP SUM to update each OA individually.
- B. Request that the Admin have SIM push the updates to the each OA.
- C. Use HP SUM Offline to update the standby OA, restart it, and repeat the procedure on the remaining OA.
- D. Select the Synchronize Firmware button in either OA.

Answer: D

Reference:<http://www.scribd.com/doc/48647073/3/Overview>(page 114, second paragraph on the page)

Question No : 9 - (Topic 1)

Which tool can be used to upgrade the firmware of Virtual Connect Ethernet module?
(Select two.)

- A. HP SUM
- B. OA
- C. VCSU
- D. VCEM
- E. HP SIM

Answer: A,C

Reference:<http://h20000.www2.hp.com/bizsupport/TechSupport/Document.jsp?objectID=c01611221&lang=en&cc=us&taskId=110&prodSeriesId=3201263&prodTypeId=32920>(see VCSU)

Question No : 10 - (Topic 1)

Which tool can be used to verify that SNMP events appear in HP SIM from a blade server running Windows 2008?

- A. Onboard Administrator
- B. System Management Homepage
- C. HP SNMP Agent
- D. Integrated Lights-Out

Answer: B

Question No : 11 - (Topic 1)

How should you save a Virtual Connect configuration?

- A. from CLI: show all > cfg.txt
- B. enclosure setting, configuration scripts, inventory

- C. enclosure setting, configuration scripts, show config, save
- D. domain setting, backup/restore

Answer: D

Question No : 12 - (Topic 1)

Which iLO3 MP logs should be looked at to check the hardware status of an HP Integrity BL870c i2 Server Blade? (Select two.)

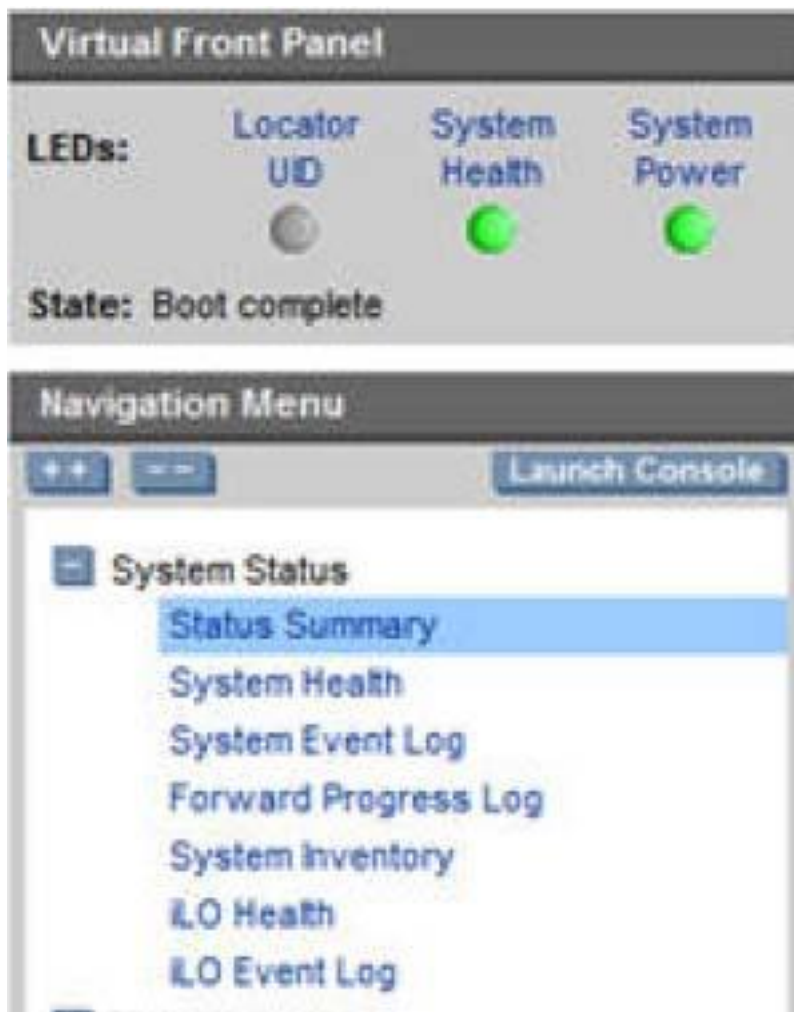
- A. Syslog log
- B. System Event log
- C. Forward Progress log
- D. Machine Check log
- E. Resource Monitor log

Answer: B,C

Explanation:

RRL:

Manual HP Integrity iLO 3 Operations Guide, Seite 35

**Question No : 13 - (Topic 1)**

Which feature should you enable in RBSU in a G7 server to reduce processor power usage and improve overall performance in some applications?

- A. Intel Hyperthreading Options
- B. HP Dynamic Power Savings Mode
- C. Processor Core Disable
- D. HP Static Low Power Mode
- E. OS Control Mode

Answer: C

Reference: <http://www.scribd.com/doc/46311510/10/Processor-Options-G7-servers>(p. 23, processor CoreDisable)

Processor Core Disable

Reduces processor power usage and improves overall performance

Improves overall performance for applications that benefit from higher performance cores rather than from additional processing cores

Addresses issues with software licensed on a per-core basis

HP Static Low Power Mode

Reduces processor speed and power usage

Guarantees a lower maximum power usage for the system

The impact on performance is greater for environments with higher processor utilization.

HP Dynamic Power Savings Mode

Automatically varies processor speed and power usage based on processor use

Reduces overall power consumption with little or no impact to performance

Does not require OS support OS Control Mode

Processors run in the maximum power and performance state, unless the OS enables a power management policy.

Intel Hyperthreading

Is a toggle setting that allows Intel Hyperthreading Technology to be enabled or disabled, though it is enabled by default.

Intel Hyperthreading delivers two logical processors that can execute multiple tasks simultaneously using shared hardware resources of a single processor core.

Question No : 14 - (Topic 1)

What is used to update firmware on several HP VC Ethernet or Fibre Channel modules

simultaneously?

- A. VCM
- B. HP FDT
- C. VCSU
- D. OA

Answer: C

Reference:http://h18004.www1.hp.com/products/quickspecs/13652_div/13652_div.PDF(page 3, overview, second bulleted point)

Question No : 15 - (Topic 1)

What is a DDR3 Memory population rule to follow for Gen8 servers?

- A. If only one processor is installed in a two processor system, only half of the DIMM slots are available.
- B. DIMMs of different voltages cannot be mixed in the same bank.
- C. DIMMs of different speed grades can be mixed.
- D. UDIMMs, RDIMMs, or LRDIMMs can be mixed.

Answer: A

Reference:<http://h20000.www2.hp.com/bc/docs/support/SupportManual/c03293145/c03293145.pdf>(page 10, second bulleted point on the page)

Question No : 16 - (Topic 1)

What is the advantage of Solid State Drive over I/O Accelerator?

- A. It offers higher reliability.
- B. It is bootable.
- C. It has a longer life span.
- D. It has higher throughput.

Answer: B