

# HP

## Exam HP2-Z30

### Fast Track - Applying HP FlexNetwork Fundamentals

Version: 7.0

[ Total Questions: 75 ]

**Question No : 1**

What is the default username and password an administrator would use to log into a new HP MSM access point?

- A. username of "hp" and password of "hp"
- B. username of "msm" and password of "wireless"
- C. username of "admin" and password of "hp"
- D. username of "admin" and password of "admin"

**Answer: D**

**Question No : 2**

Which Intelligent Management Center (IMC) group role allows an administrator to manage networking devices, but cannot add new IMC administrative users?

- A. Operator
- B. Administrator
- C. Manager
- D. Maintainer

**Answer: D**

**Question No : 3**

Which Layer 2 mechanism should be used to authenticate wireless or wired users before allowing them access to network resources?

- A. 802.1X
- B. MIMO
- C. 802.1Z
- D. WPA

**Answer: A**

**Question No : 4**

Which HP switch supports nine switches in an IRF topology?

- A. 5120-SI
- B. 5820
- C. 7500
- D. 12500

**Answer: B**

**Question No : 5**

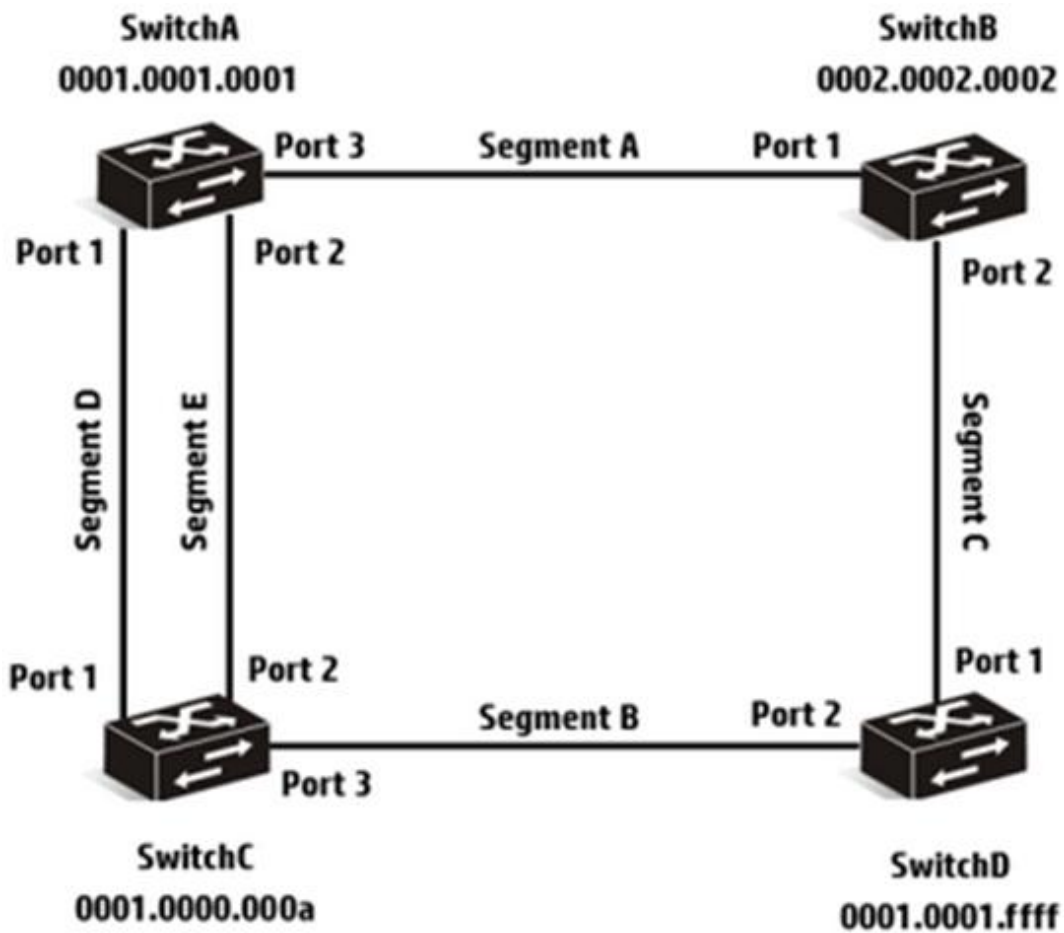
Which component of an HP Comware switch controls logging on to a syslog server?

- A. Log Parser
- B. Event Analyzer
- C. Information Center
- D. Event Log

**Answer: C**

**Question No : 6**

Refer to the network exhibit.



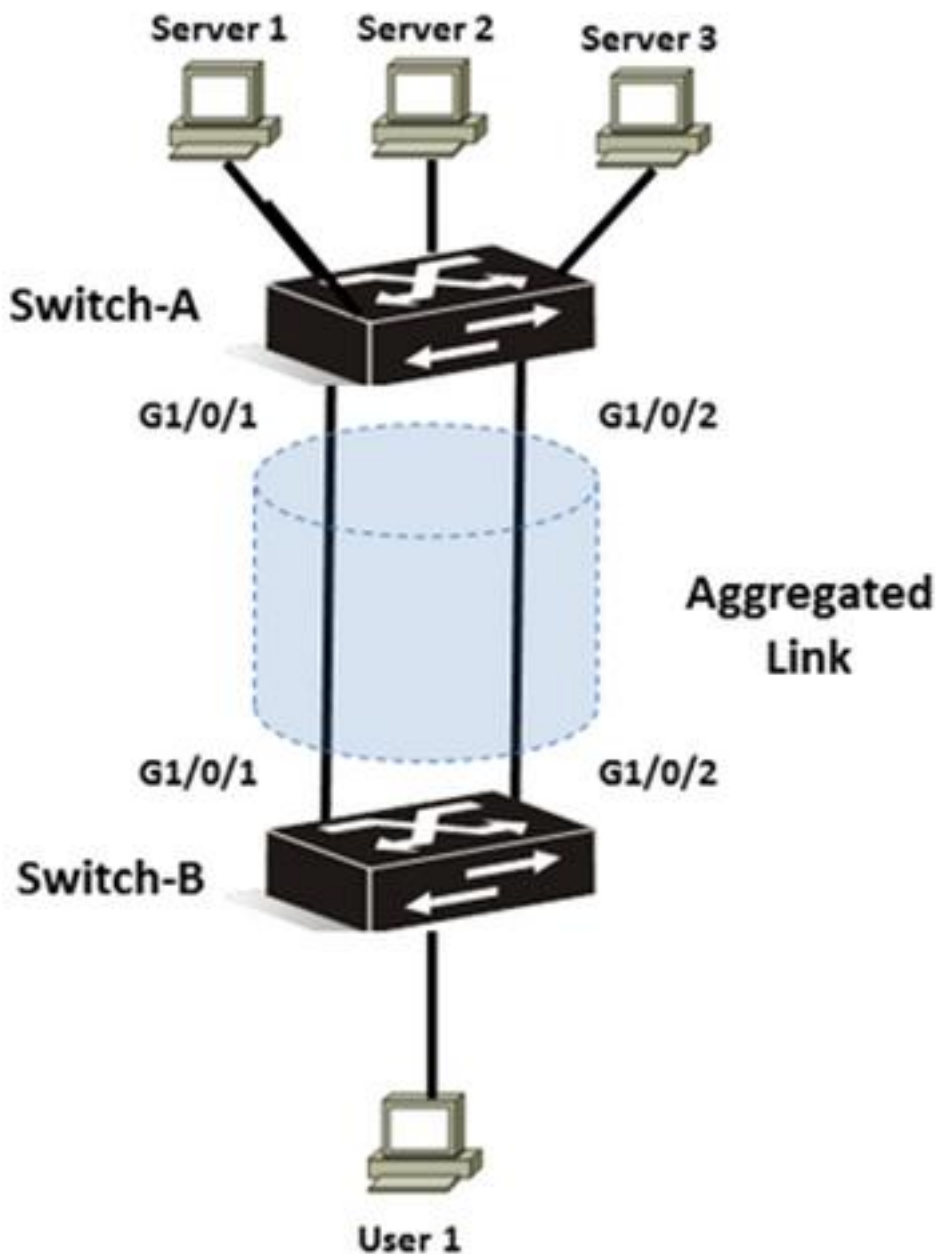
Assume the network shown in the exhibit has implemented RSTP Based on the topology, which port is a root port?

- A. SwrtchAport2
- B. SwitchD port 1
- C. SwitchC port 2
- D. SwitchB port 1

**Answer: C**

**Question No : 7**

Refer to the exhibit.



A network administrator needs to configure link aggregation using static LACP on Switch-A, which is an HP Comware switch. Which configuration accomplishes this goal?

- A  [Switch-A] interface bridge-aggregation 1  
[Switch-A-Bridge-Aggregation1] link-aggregation mode dynamic  
[Switch-A-Bridge-Aggregation1] quit  
[Switch-A] interface g1/0/1  
[Switch-A-GigabitEthernet1/0/1] port link-aggregation group 1  
[Switch-A-GigabitEthernet1/0/1] quit  
[Switch-A] interface g1/0/2  
[Switch-A-GigabitEthernet1/0/2] port link-aggregation group 1  
[Switch-A-GigabitEthernet1/0/2] quit
- B  [Switch-A] interface bridge-aggregation 1  
[Switch-A-Bridge-Aggregation1] link-aggregation mode lacp static  
[Switch-A-Bridge-Aggregation1] quit  
[Switch-A] interface g1/0/1  
[Switch-A-GigabitEthernet1/0/1] port link-aggregation group 1  
[Switch-A-GigabitEthernet1/0/1] quit  
[Switch-A] interface g1/0/2  
[Switch-A-GigabitEthernet1/0/2] port link-aggregation group 1  
[Switch-A-GigabitEthernet1/0/2] quit
- C  [Switch-A] interface bridge-aggregation 1  
[Switch-A-Bridge-Aggregation1] link-aggregation mode dynamic  
[Switch-A-Bridge-Aggregation1] port-group member g1/0/1  
[Switch-A-Bridge-Aggregation1] port-group member g1/0/2  
[Switch-A-Bridge-Aggregation1] quit
- D  [Switch-A] interface bridge-aggregation 1  
[Switch-A-Bridge-Aggregation1] link-aggregation mode static  
[Switch-A-Bridge-Aggregation1] quit  
[Switch-A] interface g1/0/1  
[Switch-A-GigabitEthernet1/0/1] port link-aggregation group 1  
[Switch-A-GigabitEthernet1/0/1] quit  
[Switch-A] interface g1/0/2  
[Switch-A-GigabitEthernet1/0/2] port link-aggregation group 1  
[Switch-A-GigabitEthernet1/0/2] quit

- A. Option A  
B. Option B  
C. Option C  
D. Option D

Answer: A

**Question No : 8**

A customer must connect networks in two buildings. The buildings are 15 meters apart. The customer does not want the additional cost of installing fiber between the two buildings and thus is exploring wireless options.

If the customer selects an 802.11n wireless solution, which wireless mode should they use?

- A. inline
- B. infrastructure
- C. in-cell relay
- D. multipoint

**Answer: C**

**Question No : 9**

A network administrator has created and applied a configuration to an HP Provision switch. The network administrator then copied the active configuration to a TFTP server. Upon examining the configuration file on the TFTP server, the network administrator noticed that the operator and manager passwords were not in the saved configuration file.

Which command must the network administrator execute to accomplish this task?

- A. include-credentials
- B. include-passwords
- C. save-credentials
- D. backup-accounts

**Answer: A**

**Question No : 10**

What are the correct factory default settings when the HP Comware and Provision switches are originally booted?

- A. Provision and Comware switches have Telnet enabled.
- B. Provision and Comware switches have all Layer 2 interfaces disabled.
- C. Provision and Comware switches have default passwords defined.
- D. Provision and Comware switches have Layer 3 switching disabled.

**Answer: D**

**Question No : 11**

What is a key emerging standard protocol that HP Virtual Application Networks (VAN) use to implement Software-Defined Networks (SDN)?

- A. IMC
- B. OpenFlow
- C. FlexFabric
- D. OpenStack

**Answer: B**

**Question No : 12**

An administrator is adding an HP Provision switch to an existing OSPF network. The switch has two VLANs, 10 and 20, that should be included in OSPF's area 0. The IP address of the switch in VLAN 10 is 10.110.1/24 and in VLAN 20 is 10.1.20.1/24.

Which configuration includes both VLANs in the switch's OSPF routing process?