

Juniper JN0-531

**JN0-531 Juniper Networks Certified Internet Specialist
(JNCIS-FWV)
Practice Test
Version 1.6**

QUESTION NO: 1

How many tunnels would need to be created to build a full mesh between 10 VPN devices?

- A. 10
- B. 20
- C. 45
- D. 100

Answer: C

QUESTION NO: 2

You have configured a secondary path for the NSRP cluster. Which type of traffic is sent over the secondary path?

- A. NSRP heartbeats
- B. RTO message sync
- C. NSRP data packet forwarding
- D. configuration sync messages

Answer: A

QUESTION NO: 3

Which statement is correct about the configuration of GRE?

- A. It can be enabled on any tunnel interface.
- B. It can provide simple encryption by enabling a key option.
- C. It can be enabled by going to the advanced Auto Key IKE options.
- D. It requires matching keep-alive settings on both sides of the tunnel.

Answer: A

QUESTION NO: 4

You need to investigate some physical layer problems. Which command will provide you with information that you can use to analyze these types of problems?

- A. get log event
- B. get counter screen e0/0
- C. get counter flow interface e0/0

D. get counter statistics interface e0/0

Answer: D

QUESTION NO: 5

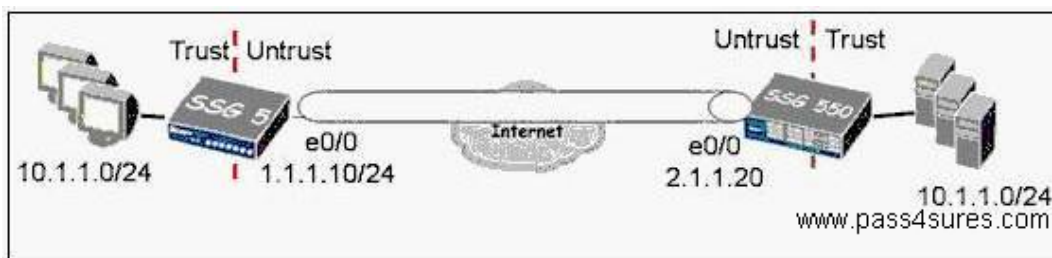
Which feature minimizes OSPF routing exchanges and hello traffic over VPN links?

- A. demand circuit
- B. passive interface
- C. point-to-multipoint interface
- D. inter-area route summarization

Answer: A

QUESTION NO: 6

Click the Exhibit button.



In the exhibit, which two would allow you to exchange traffic between hosts behind the SSG 5 and the SSG 550? (Choose two.)

- A. VIPs on both sides
- B. DIPs on both sides
- C. MIP on both sides
- D. a combination of NAT-src and NAT-dst

Answer: C,D

QUESTION NO: 7

When you configure integrated web filtering, which settings are needed on the client's PC?

- A. No client IP is needed.
- B. No settings are needed.

- C. A browser setting to define a proxy server.
- D. A browser setting to point to the ingress IP address.

Answer: B

QUESTION NO: 8

When configuring security proposals with the NetScreen-Remote client, how many Phase 2 proposals are included by default when you configure a new connection?

- A. 1
- B. 2
- C. 3
- D. 4

Answer: A

QUESTION NO: 9

Which two methods can the ScreenOS device use to assign traffic to a VSYS? (Choose two.)

- A. IP-based classification
- B. VLAN-based classification
- C. policy-based classification
- D. interface-based classification

Answer: A,D

QUESTION NO: 10

Click the Exhibit button.

```

701019.0: 2(i) len=120:001143436443->0010db5a0b62/0800
      10.2.6.100 -> 192.168.3.5/17
      vhl=45, tos=00, id=16550, frag=0000, ttl=128 tlen=106
      udp:ports 1032->161, len=86

701019.0: 2(o) len=70:0010db5a0b62->001143436443/0800
      63.251.61.185 -> 10.2.6.100/1
      vhl=45, tos=00, id=0, frag=0000, ttl=251 tlen=56
      icmp:type=3, code=1

701025.0: 2(i) len=120:001143436443->0010db5a0b62/0800
      10.2.6.100 -> 192.168.3.5/17
      vhl=45, tos=00, id=16551, frag=0000, ttl=128 tlen=106
      udp:ports 1032->161, len=86

701025.0: 2(o) len=70:0010db5a0b62->001143436443/0800
      63.251.61.185 -> 10.2.6.100/1
      vhl=45, tos=00, id=0, frag=0000, ttl=251 tlen=56
      icmp:type=3, code=1

701073.0: 2(i) len=92:001143436443->ffffffffffff/0800
      10.2.6.100 -> 10.2.6.255/17
      vhl=45, tos=00, id=16558, frag=0000, ttl=128 tlen=88
      udp:ports 137->137, len=58
  
```

In the exhibit, which command would be used to correct the mistake shown in the output?

- A. debug session
- B. set stream cap
- C. set ffilter ip-proto
- D. set debug permissions

Answer: C

QUESTION NO: 11

Click the Exhibit button.

```

ssg550-> undebug all
ssg550-> set ffilter src-ip 1.1.1.20
ssg550-> debug flow basic
ssg550-> clear db
ssg550-> get dbuf stream
***** 88622.0: <Public/ethernet0/1> packet received [60]*****
      www.pass4sures.com
  
```

In the exhibit, you are attempting to snoop packets destined to 10.84.57.29.

Using the information in the output, which command would you enter next to work toward accomplishing your goal?

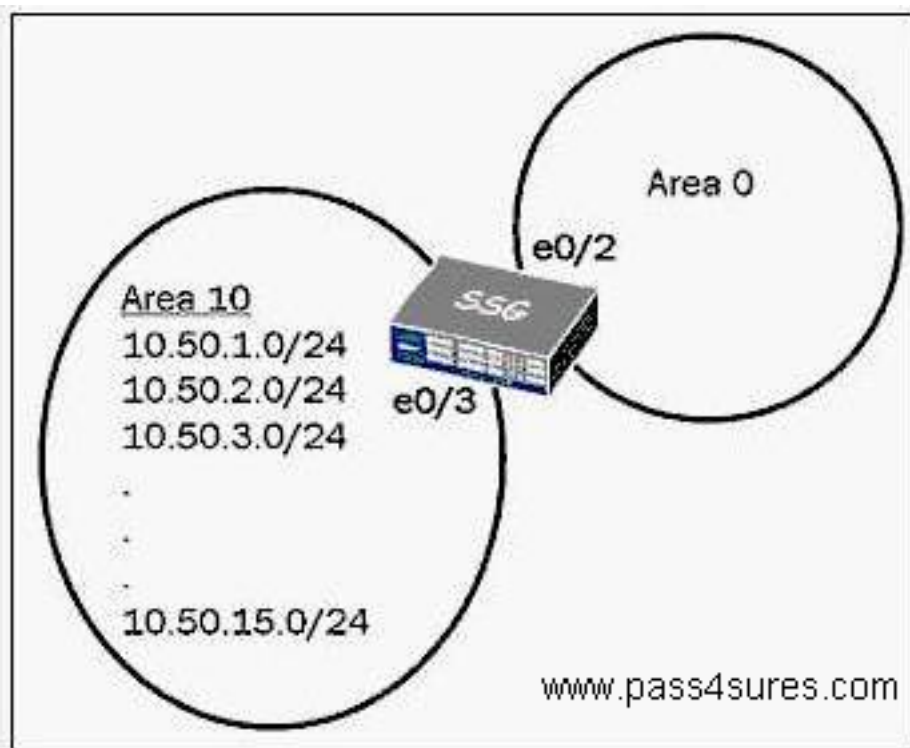
- A. snoop on
- B. snoop info

- C. set ffilter
- D. snoop ffilter

Answer: B

QUESTION NO: 12

Click the Exhibit button.



In the exhibit, you want to enable route summarization for area 10 and advertise only the summary route. Which command will accomplish this?

- A. set vrouter trust-vr protocol ospf summary-range 10.50.1.0/20
- B. set vrouter trust-vr protocol ospf area 10 range 10.50.1.0/20 advertise
- C. set interface e0/3 protocol ospf area 10 range 10.50.1.0/20 no-advertise
- D. set vrouter trust-vr protocol ospf area 10 range 10.50.1.0/20 no-advertise

Answer: B

QUESTION NO: 13

What are three components that make up a redundant VPN configuration? (Choose three.)

- A. master
- B. targets

- C. monitor
- D. backups
- E. VPN groups

Answer: B,C,E

QUESTION NO: 14

Click the Exhibit button.

```

ssg550-> get event
Date      Time      Module Level Type  Description
2006-08-21 11:23:43  system info 00536 IKE<1.1.1.25> Rejected an initial
Phase 1 packet from an unrecognized
peer gateway.
    
```

www.pass4sures.com

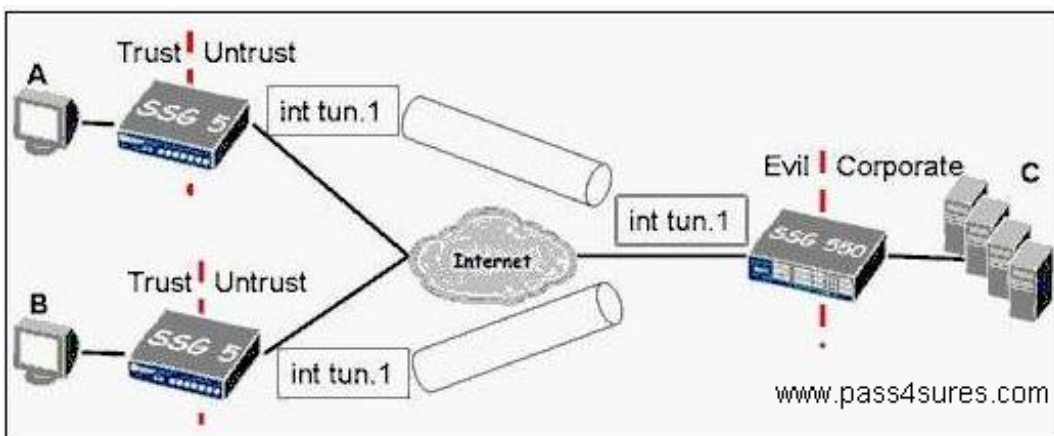
In the exhibit, Phase 1 negotiation is failing.
Which two would be related to the problem? (Choose two.)

- A. Phase 1 proposal mismatch
- B. incorrect peer address set on initiator
- C. incorrect peer address set on receiver
- D. incorrect outgoing interface set on receiver

Answer: C,D

QUESTION NO: 15

Click the Exhibit button.



In the exhibit, the hub and spoke VPN uses route-based VPNs and has intra-zone blocking enabled on the Evil zone.

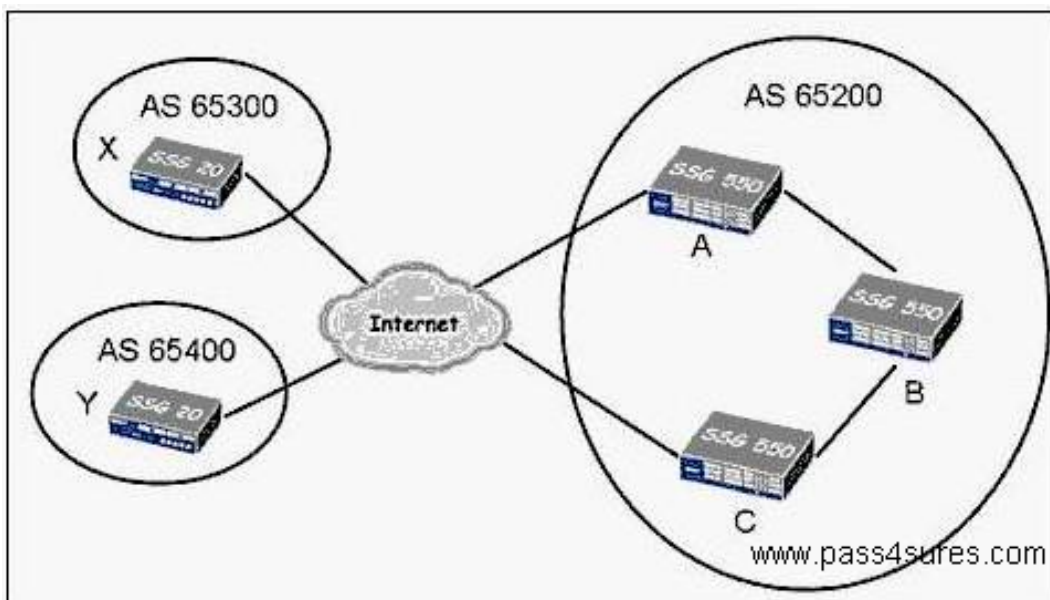
What is the minimum number of policy rules required to establish full, bi-directional communications between all locations?

- A. 3
- B. 4
- C. 6
- D. 7

Answer: D

QUESTION NO: 16

Click the Exhibit button.



In the exhibit, you need to configure BGP between devices A and C in AS 65200. Which configuration, if any, will be required only on device B?

- A. No configuration is required on device B.
- B. You need to configure IBGP, defining devices A and C as BGP peers.
- C. You need to enable OSPF on device B and redistribute BGP routes on devices A and C.
- D. You need to configure a policy permitting BGP traffic between device A and device C.

Answer: D

QUESTION NO: 17

Which commands would you use to create a zone and make it ready to perform IP classification for a VSYS?

- A. set zone name Zone1
Set zoneZone1 ip-classification
- B. set zone name Zone1 shared setzoneZone1 ip-classification
- C. set zone name Zone1 setzoneZone1 shared setzoneZone1 ip-classification
- D. set zone name Zone1 setzoneZone1 shared setzoneZone1 ip-classification enable

Answer: C

QUESTION NO: 18

Which CLI command identifies the multicast sources visible to your Screen OS device?

- A. get route pim
- B. get igmp source all
- C. exec pim interface all query
- D. get vrouter trust-vr protocol pim

Answer: D

QUESTION NO: 19

What are the three building blocks to create a PBR policy? (Choose three.)

- A. action groups
- B. match groups
- C. session groups
- D. extended access lists
- E. extended access groups

Answer: A,B,D

QUESTION NO: 20

Click the Exhibit button.

```

ssg550-> get route
C - Connected, S - Static, A - Auto-Exported, I - Imported
iB - IBGP, eB - EBGP, R - RIP, O - OSPF, E1 - OSPF external type 1
E2 - OSPF external type 2

untrust-vr {0 entries}
=====

trust-vr {8 entries}
=====
  ID IP-Prefix      Interface  Gateway      P   Pref  Mtr Vsys
-----
*   9 0.0.0.0/0      eth0/4     1.1.8.254    S   20    1 Root
*   8 1.1.70.0/24   eth0/3     1.1.7.254    S   20    1 Root
*   7 10.1.20.0/24  eth0/2     10.1.2.254   S   20    1 Root
   2 10.1.1.0/24    eth0/1     0.0.0.0      C   0     0 Root
*   3 10.1.2.0/24    eth0/2     0.0.0.0      C   0     0 Root
<output omitted>

```

Users are having difficulties reaching 10.1.1.25. You execute a get route command and find the results shown in the exhibit.

What can you determine from this routing table?

- A. The problem is probably at the next hop.
- B. A gateway must be assigned to ethernet0/1.
- C. The preference on route ID 2 must be configured to a higher value.
- D. The ethernet0/1 physical link may be down and needs troubleshooting.

Answer: D

QUESTION NO: 21

How is antivirus scanning enabled on a ScreenOS device?

- A. Antivirus scanning is implemented in a policy
- B. Antivirus scanning is implemented at the interface.
- C. Antivirus scanning is a stand-alone product and manually enabled.
- D. Antivirus scanning is enabled by default on some ScreenOS devices.

Answer: A

QUESTION NO: 22

During main mode negotiations a failure has occurred while using IKE certificates. Which message pair would you review to troubleshoot this failure?

- A. messages 1 & 2
- B. messages 2 & 3