

# Microsoft

## Exam MB6-703

**Microsoft Dynamics AX 2012 R3 Trade and Logistics**

Version: 8.0

[ Total Questions: 92 ]

**Question No : 1**

You create a new purchase order and add a line that has a product, quantity, and unit price.

You need to send the purchase order to the vendor.

What should you generate?

- A. Areceipts list
- B. Aproduct receipt
- C. Apro forma receipts list
- D. Aconfirmation

**Answer: B**

**Explanation:** Confirm the receipt of products [AX 2012]

When you order a product such as a new office desk, and the purchase is then confirmed, a product receipt that has not yet been confirmed becomes available on the **Unconfirmed product receipts** page on Enterprise Portal for Microsoft Dynamics AX. The product receipt indicates the expected date of delivery of the ordered product. When the product arrives, you must confirm the receipt of the product. You need to do this to indicate that you accept the delivery. You do this on the **Unconfirmed product receipts** page.

- ✍ Click Procurement on the top link bar, and then click Unconfirmed product receipts on the Quick Launch.
- ✍ Select the product receipt that you want to confirm. On the Action Pane, on the Confirmation of product receipt tab, in the Update group, click Receive.
- ✍ Approve or change the received quantity, and then click the Close line check box if you want to close the purchase order line.
- ✍ Click Save and close to save the changes, if any, and return to the Unconfirmed product receipts page. The product receipt that you have just confirmed is no longer visible in the list.

**Question No : 2**

You need to identify what happens to the on-hand inventory of a bill of materials (BOM) and the components of the BOM when you report a BOM as finished.

What should you identify?

- A. The on-hand quantity of the BOM and the on-hand quantity of the BOM components are unchanged.
- B. The on-hand quantity of the BOM is increased, and the on-hand quantity of the BOM components is decreased.
- C. The on-hand quantity of the BOM is unchanged and the on-hand quantity of the BOM components is decreased.
- D. The on-hand quantity of the BOM item is increased, and the on-hand quantity of the BOM components is unchanged.

**Answer: D**

**Question No : 3**

You need to create a draft sales order. The sales order must not include inventory transactions.

Which order type should you use?

- A. Subscription
- B. Sales order
- C. Item requirements
- D. Journal

**Answer: D**

**Explanation:** A sales order of type Journal is a draft sales order. It has no effect on stock.

**Question No : 4**

A warehouse coordinator manually allocates how much inventory should be shipped each day for transfer orders. A warehouse worker uses the information entered by the warehouse coordinator to process the shipments automatically.

You need to identify which actions must be performed by the warehouse coordinator and the warehouse worker.

What should you identify?

- A. The warehouse coordinator enters the quantity into the Receive now field, and then the warehouse worker performs the shipment update.
- B. The warehouse coordinator enters the quantity into the Ship now field, and then the warehouse worker performs the shipment update.
- C. The warehouse coordinator enters the quantity into the Ship now field, and then the warehouse worker performs the picking list update.
- D. The warehouse coordinator enters the quantity into the Receive now field, and then the warehouse worker performs the picking list update.

**Answer: B**

**Explanation:** Transfer orders (form) [AX 2012]

\*Ship now

View or modify the shipment quantity for the transfer order line that you want to ship now.

\*

/Shipped quantity

The quantity of a transfer order line that has already been shipped. This field is updated after every shipment update.

(Ship remain

The remaining quantity to be shipped after the last shipment update.

Incorrect:

\*Receive now

View or modify the receipt quantity for the transfer order line that you want to receive now.

### Question No : 5

You are setting up a new product.

Which of the following three fields are required to finalize the released product? Each correct answer presents part of the solution.

- A. Product category
- B. Item group
- C. Item sales tax group
- D. StorageDimension group
- E. Item modelgroup

**Answer: B,D,E**

**Explanation:** In the Released products form

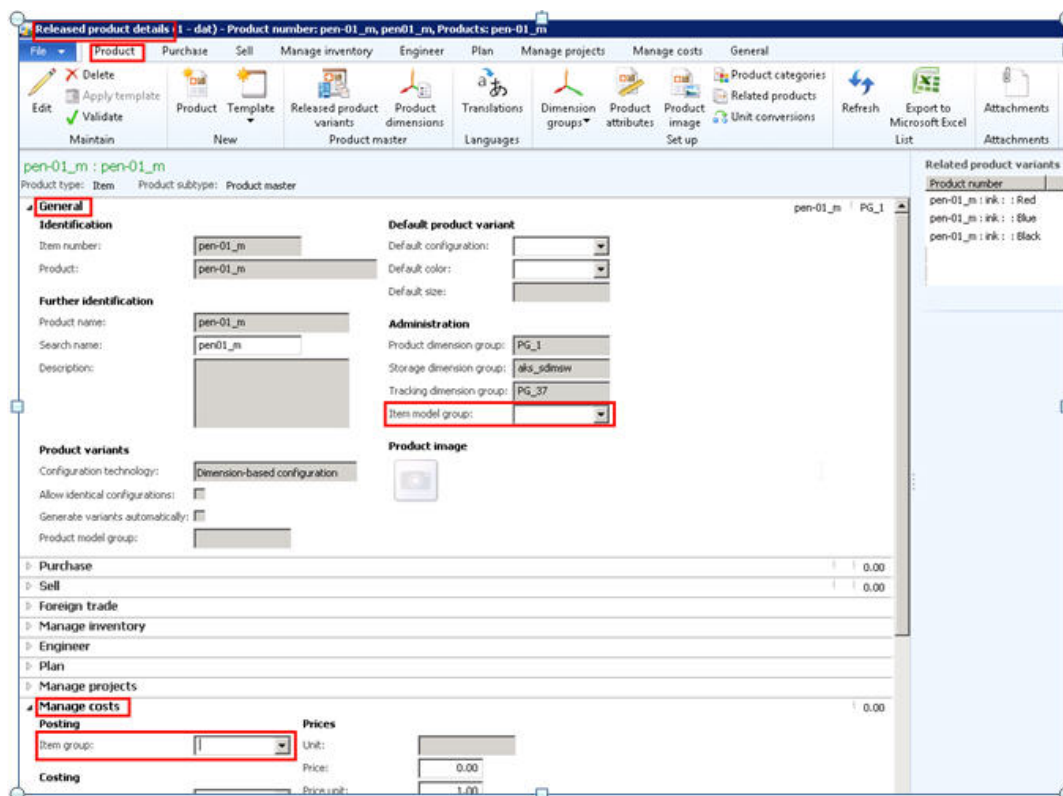
In the Released product details form, in the General Fast Tab , you will find 'Item Model Group' Field

From the drop down menu, select an item model group.

In the same form , in 'Manage costs' tab posting, field you will find 'Item Groups' Field.

From the drop down menu select an Item Group.

Now the item or Product or Product master is ready for further transactions.



<http://ramdynamicsax.files.wordpress.com/2011/11/101.jpg>

### Question No : 6

You need to add freight and handling charges when you enter a new purchase order.

What are two possible ways to achieve this goal? Each correct answer presents a complete solution.

- A.** Create a journal for the freight and handling charges.
- B.** Add two additional lines to the purchase order, one for the freight service item and one for the handling service items.

- C. Add two additional supplementary items to the purchase order, one for freight and one for handling.
- D. Add two charges transactions that each has a charges code.

**Answer: C,D**

**Question No : 7**

You need to configure which ledger account will be used when you post various types of inventory transactions.

Which form should you use?

- A. Inventory and warehouse management parameters
- B. Item model groups
- C. General ledger parameters
- D. Item groups

**Answer: B**

**Explanation:** Item model groups (form) [AX 2012]

Field:Post physical inventory

Select this check box to post physical item transactions in the ledger.

The physical item transactions are posted as follows:

\*Packing slips and product receipts are posted if the Post product receipt in ledger check box is selected in the Accounts payable parameters form, or if the Post packing slip in ledger check box is selected in the Accounts receivable parameters form.

\*Production orders that are reported as finished are posted if the Post report as finished in ledger check box is selected in the Production control parameters form.

If the check box is cleared, packing slips, product receipts, and production orders that are reported as finished are not posted in the ledger, regardless of the settings in the parameter setup forms.

**Question No : 8**

You create a counting journal. The counted quantity on some lines of the journal is higher

or lower than the on-hand quantity.

You need to identify which field will be updated in the inventory transaction when you post the counting journal.

Which field should you identify?

- A. Quantity
- B. Counted
- C. On-hand
- D. Line amount

**Answer: C**

**Explanation:** Field On-Hand: The on-hand inventory levels of the item for the inventory dimension on the counting date.

**Question No : 9**

A customer is placing an order for an item that is in stock. The customer requires that the order be delivered within two weeks.

You need to identify the minimum amount of time required for the order to be delivered to the customer.

What should you do from the Sales order form?

- A. View the Confirmed receipt date.
- B. View the Confirmed delivery date.
- C. Click Simulate delivery dates
- D. From the purchase order, view the Requested receipt date

**Answer: C**

**Explanation:** To review the available receipt and ship dates and transfer them to the order again, click Simulate delivery dates and revise the dates. The Available ship and receipt dates form is displayed. In the Available ship and receipt dates form, select the date that matches your requirements, and then click Update requested ship date.

Incorrect:

Not A: Confirmed receipt date – The confirmed receipt date when you will be able to meet the customer's requested receipt date.

not D: Requested receipt date – The requested receipt date when the customer wants to receive the goods.

**Question No : 10**

You need to create a purchase agreement between your company and a supplier. The agreement will give you a 10 percent discount automatically on an item, after you purchase \$10,000 US dollars' worth of that Item during a 12 month period.

Which Default commitment type should you use?

- A. Product quantity commitment
- B. Value commitment
- C. Product value commitment
- D. Product category value commitment

**Answer: C**

**Explanation:** There are four types of commitments:

Product quantity commitment – You purchase a specific quantity of a product.

Product value commitment – You purchase a specific currency amount of a product.

Product category value commitment – You purchase a specific currency amount in a procurement category. The amount can be for a catalog item or a non-catalog item.

Value commitment – You purchase a specific currency amount of any product or in any procurement category.

**Question No : 11**

A customer returns a stocked item.

The item is currently at the inbound dock of the warehouse.

You need to process the return of the item.



What should you do first?

- A. From the Sales order form, generate a packing slip.
- B. From the Arrival overview form, start an arrival.
- C. From the Item arrival journal, generate a product receipt
- D. From the Return order form, enter a disposition code.

**Answer: D**

**Explanation:** To support their process for returning products, a company can create and use return reason codes and disposition codes in Microsoft Dynamics AX.

**Question No : 12**

You create a new product that has a new bill of materials (BOM). The lines for each component are added to the BOM lines.

You need to configure the BOM to prevent the line for item 700 and the line for item 500 from both being selected in the BOM.

What should you create?

- A. A configuration route for item 700 by using the Select method for 500
- B. A configuration rule for item 700 by using The Select method for 500
- C. A configuration route for item 700 by using the Deselect method for 500
- D. A configuration rule for item 700 by using the Deselect method for 500

**Answer: D**

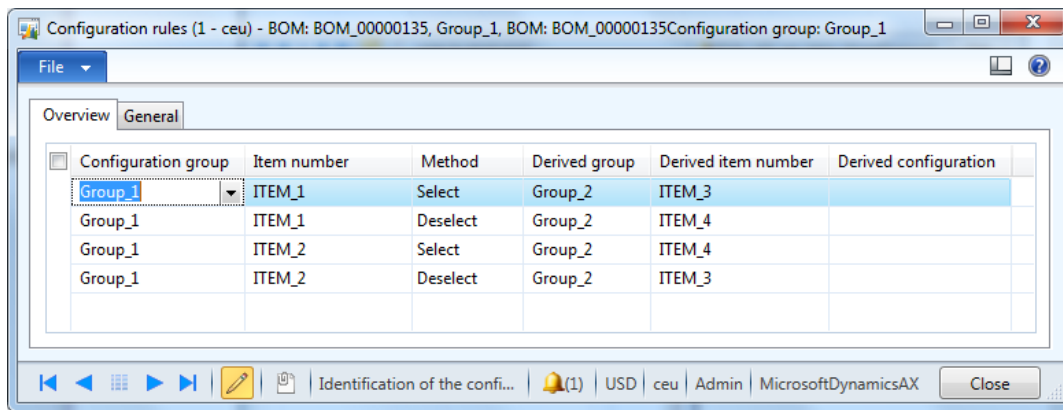
**Explanation:** \* Configuration Rule Methods:

The following methods are available:

/Deselect – The derived configuration group, item number, and configuration cannot be selected if the combination specified in the Configuration group and Item number fields is selected when you set the configuration.

/Select – The derived configuration group, item number, and configuration will automatically be selected if the combination specified in the Configuration group and Item number fields is selected when you set the configuration.

\* Example:



<http://1.bp.blogspot.com/>

[PL61fAovMvg/Ue5yjZmuURI/AAAAAAAAAIE/TmtZuZ2Kbm0/s1600/5.png](http://1.bp.blogspot.com/PL61fAovMvg/Ue5yjZmuURI/AAAAAAAAAIE/TmtZuZ2Kbm0/s1600/5.png)

### Question No : 13

A customer is placing an order for an item that is in stock. The customer requires that the order be delivered within two weeks.

You need to identify the minimum amount of time required for the order to be delivered to the customer.

What should you do from the Sales order form?

- A. View the Confirmed receipt date.
- B. View the Confirmed delivery date.
- C. From the purchase order, view the Requested receipt date.
- D. Click Simulate delivery dates

**Answer: D**

**Explanation:** The Simulate delivery dates function will calculate and show the available shipment and receipt dates based on your shipping calendar.

### Question No : 14

You post the shipment for a transfer order.