

# BCS

## Exam TTA1

### ISTQB-BCS Certified Tester Advanced Level- Technical Test Analyst (2012)

Version: 6.0

[ Total Questions: 65 ]

**Topic break down**

<b>Topic</b>	<b>No. of Questions</b>
<b>Topic 1: "Test Techniques various"</b>	<b>9</b>
<b>Topic 2: Structure-based Techniques</b>	<b>7</b>
<b>Topic 3: Bonus Program</b>	<b>16</b>
<b>Topic 4: Test tools &amp; Automation</b>	<b>6</b>
<b>Topic 5: Testing of Software Characteristics</b>	<b>8</b>
<b>Topic 6: Specification Based Test Techniques</b>	<b>8</b>
<b>Topic 7: Test Process &amp; Incident Management</b>	<b>11</b>

**Topic 1, "Test Techniques various"****Question No : 1 - (Topic 1)**

A component has been analyzed as being highly critical. Which of the following structure-based test design techniques provides the highest level of coverage? 1 credit [K2]

Number of correct answers: 1

- A. Statement testing
- B. Decision testing
- C. Condition determination testing
- D. Multiple condition testing

**Answer: C**

**Question No : 2 - (Topic 1)**

Consider the following fault attack: "Force all possible incoming errors from the software/OS interfaces to the application". Which of the following is the kind of failure you are looking for when using this attack? 1 credit [K2]

Number of correct answers: 1

- A. Application crashes when unsupported characters are pasted into an input field using the windows clipboard
- B. Front page of the application has incorrect spelling of the company name
- C. Application fails to display financial numbers in the correct currency format in reports
- D. Application miscalculates total monthly balance due on credit cards

**Answer: A**

**Question No : 3 - (Topic 1)**

If you are flying with an economy ticket, there is a possibility that you may get upgraded to business class, especially if you hold a gold card in the airline's frequent flier program. If you don't hold a gold card, there is a possibility that you will get 'bumped' off the flight if it is

## BCS TTA1 : Practice Test

full and you check in late. This is shown in the figure hereafter. Note that each box (i.e. statement) has been numbered.

Three tests have been run:

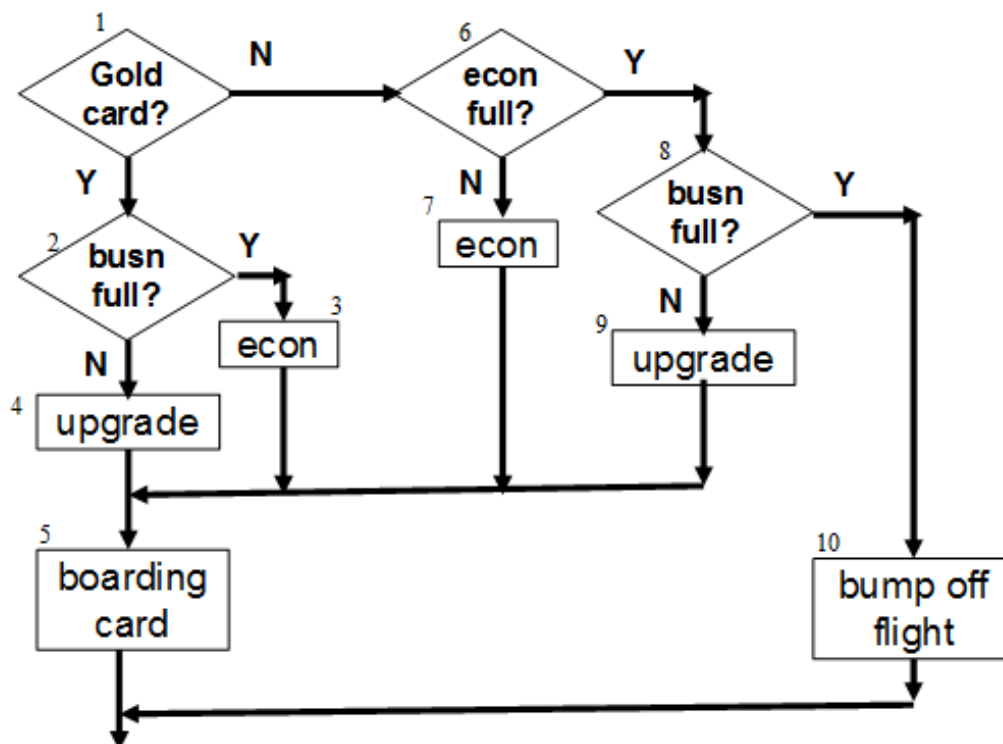
Test 1: Gold card holder who gets upgraded to business class

Test 2: Non-gold card holder who stays in economy

Test 3: A person who is bumped from the flight

What is the statement coverage of these three tests? 2 credits [K4]

Number of correct answers: 1



- A. 60%
- B. 70%
- C. 80%
- D. 90%

**Answer: C**

**Question No : 4 - (Topic 1)**

Which of the following is a dynamic analysis technique related to improving application performance? 1 credit [K2]

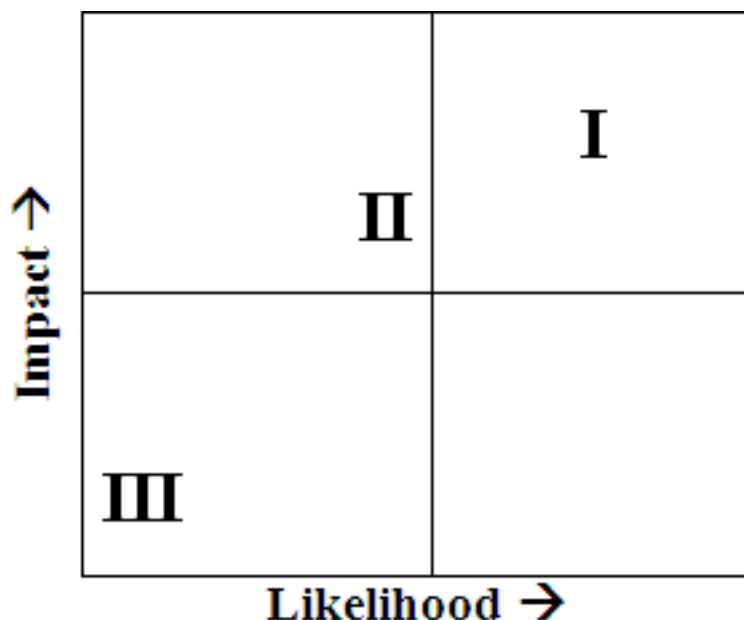
Number of correct answers: 1

- A. Code complexity analysis
- B. Profiling
- C. Networkpackage sniffing
- D. Spelling and grammar checking

**Answer: B**

**Question No : 5 - (Topic 1)**

The result of a product risk analysis performed on components I, II and III of the airplane control system shows the following risk matrix:



The project wants to mitigate the risks by defining different types of coverage depending on the risk level of the components. Which of the following would be a meaningful solution for setting the coverage targets? 2 credits [K3]

Number of correct answers: 1

- A. I: Condition determination coverage, II: Decision Coverage, III: Statement coverage
- B. I: Condition determination coverage, II: Statement coverage, III: Decision coverage
- C. I: Decision coverage, II: Condition determination coverage, III: Statement Coverage
- D. I: Multiple condition coverage, II: Decision coverage, III: Condition determination coverage

**Answer: A**

**Question No : 6 - (Topic 1)**

Definition-use pairs are identified during which of the following static analysis activities? 1 credit [K2]

Number of correct answers: 1

- A. Control flow analysis
- B. Data flow activities
- C. Coding standards analysis
- D. Cyclomatic complexity analysis

**Answer: B**

**Question No : 7 - (Topic 1)**

If we say that a set of tests has achieved 100% structural decision coverage on a particular module in a program, what does that mean?

1 credit [K2]

Number of correct answers: 1

- A. That all bugs present in that module were necessarily revealed by those tests.
- B. That every control flow branch had been executed at least once by those tests.
- C. That every dataflow in that module was exercised at least once by those tests.
- D. That every path through that module was exercised at least once by those tests.

**Answer: B**