

# VMware VCA410-DT

## VMware Certified Professional 4 – Desktop Version: 4.0

**QUESTION NO: 1**

Which two steps are part of the View Composer installation process? (Choose two.)

- A. select the Enable View Composer checkbox in the View Administrator
- B. install the View Composer on the vCenter Server system
- C. register View Composer service on the Windows system
- D. configure ODBC connection to the View Composer database

**Answer: B,D**

**Explanation:**

**QUESTION NO: 2**

A new Connection Server has been added to the View environment. View administrators and clients cannot connect to that new Connection Server. However, connectivity to the pre-existing Connection Servers remains active.

Which three configurations should be verified to diagnose the problem? (Choose three.)

- A. that you can connect directly to the new Connection Server using telnet on port 80
- B. that the View Connection Server services are running on the newly added Connection Server
- C. that the IP address for the new Connection Server has not changed on the server or within DNS
- D. that the Security Server associated with the Connection Server is running
- E. that the vCenter Server system associated with the Connection Server is running

**Answer: A,B,C**

**Explanation:**

**QUESTION NO: 3**

A user attempts to connect to a desktop from outside of the corporate network through a View 4.5 Security Server, but for several seconds sees only a black screen that is followed by an error message from the View Client that indicates The connection to the remote computer ended.

What is the likely cause of this error?

- A. The Security Server is not configured to accept PCoIP connection remotely.
- B. The External URL for the VMware Security Server is set to an incorrect address.

- C. The VPN connection was not established prior to the user connecting to the View environment.
- D. The External URL for the VMware Security Server is set using an incorrect port.

**Answer: C**

**Explanation:**

#### QUESTION NO: 4

Following a recent upgrade to the View environment to View 4.6, the option to set the PCoIP External URL of the Security Server is not available from View Administrator.

What is the likely cause of the problem?

- A. The View Security Server was not upgraded to version 4.6.
- B. The External URL should have been set during the installation of the View Security Server.
- C. The View Security Server service is not running on the View Connection Server.
- D. The External URL was not configured from the View Security Server Management Interface.

**Answer: A**

**Explanation:**

#### QUESTION NO: 5

A customer provides a list of requirements for the virtual desktop environment for consideration during a pre-implementation discussion.

Which three customer requirements will be satisfied by the View Connection Server in its role as a connection broker? (Choose three.)

- A. user authentication
- B. desktop provisioning
- C. connection negotiation between the client and the virtual desktop
- D. desktop assignment, if available
- E. USB redirection

**Answer: A,C,D**

**Explanation:**

**QUESTION NO: 6**

A system administrator is deploying a legacy ThinApp package to production users when the original install media for the legacy application disappears.

Which ThinApp feature will enable the system administrator to perform an update to an existing ThinApp package, integrate the update with the original ThinApp project, and then deploy the update across all users?

- A. Side by Side update
- B. SBmerge
- C. ThinApp Merge
- D. AppSync

**Answer: B**

**Explanation:**

**QUESTION NO: 7**

A university has implemented VMware View for classroom labs around the campus. The View administrator needs to ensure that students only print to the printer located in the lab. Each lab has a dedicated printer.

Which View feature meets these requirements?

- A. ThinPrint-based printing
- B. Location-based printing
- C. Central-based printing
- D. Local-based printing

**Answer: B**

**Explanation:**

**QUESTION NO: 8**

What are the virtualization software requirements for View Connection Server?

- A. vSphere 4.0 Update 2 or vSphere 4.1
- B. vSphere 4.0 Update 1 or vSphere 4.1
- C. VMware Infrastructure 3.5 Update 4 and VirtualCenter Server 2.5 Update 5

D. VMware Infrastructure 3.5 Update 3 and VirtualCenter Server 2.5 Update 3

**Answer: A**

**Explanation:**

**QUESTION NO: 9**

Which two ports must be opened in the firewall to enable communication between a Security Server and a Connection Server? (Choose two.)

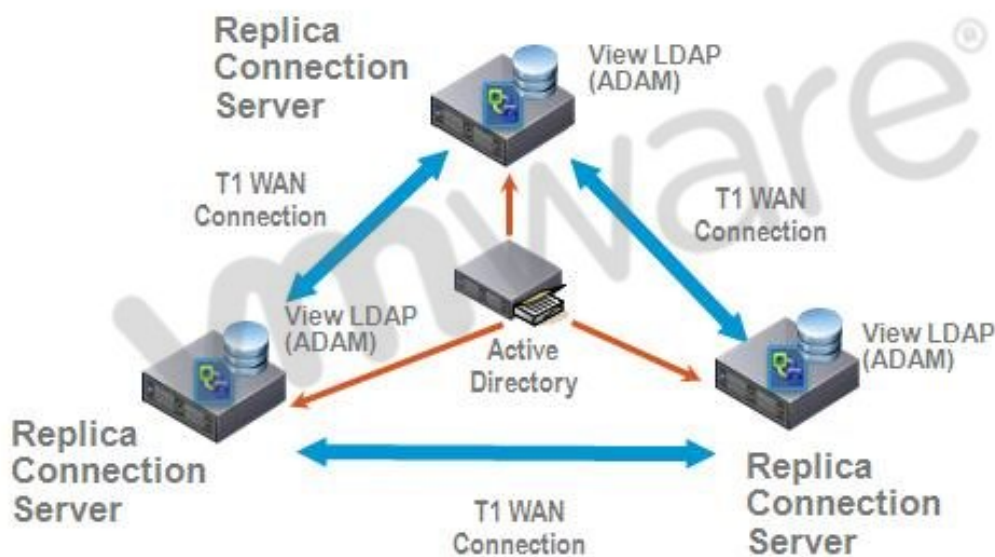
- A. 4001
- B. 8443
- C. 3389
- D. 8009

**Answer: A,D**

**Explanation:**

**QUESTION NO: 10**

Click the Exhibit button.



A proposed configuration of three Replica Servers is shown.

What can result from this configuration?

- A. Multiple ADAM instances can cause a performance problem.
- B. Three Replica Servers can result in client connection problems.
- C. Multiple connections to Active Directory can cause a performance problem.
- D. Replication over WAN connections can cause inconsistencies in the LDAP database.

**Answer: D**

**Explanation:**

#### QUESTION NO: 11

A system administrator needs to create an application repository for ThinApp deployments from the View Administrator.

Which two items are required in order to complete this task? (Choose two.)

- A. Windows network share
- B. ThinApp distribution point
- C. NFS datastore
- D. ThinApp MSI files

**Answer: A,D**

**Explanation:**

#### QUESTION NO: 12

A new SSL certificate has been installed on the View Security Server.

Which step must be completed to ensure that the Security Server uses the new certificate?

- A. restart the VMware View Connection Server service
- B. restart the VMware View Security Server service
- C. start the newly created SSL\_Certificate service
- D. edit the locked.properties file to enable the new SSL certificate

**Answer: B**

**Explanation:****QUESTION NO: 13**

A company opens a new remote office with five PCoIP-enabled thin clients. The administrator configures the clients to connect to the View Security Server installed at headquarters.

Which setting must the administrator configure on the View Security Server to make sure PCoIP is routed to the internal network?

- A. PCoIP External URL
- B. PCoIP Gateway URL
- C. PCoIP Gateway Address
- D. External URL

**Answer: A****Explanation:****QUESTION NO: 14**

To use previously created desktop virtual machines, which type of desktop pool should the View administrator create?

- A. automated desktop pool
- B. manual desktop pool
- C. persistent desktop pool
- D. custom desktop pool

**Answer: B****Explanation:****QUESTION NO: 15**

A View administrator needs to distribute ThinApp packages from a newly created ThinApp repository. The corresponding ThinApp package has been set with the streaming option.

Which three ThinApp specific items will be stored inside the corresponding application repository?

(Choose three.)

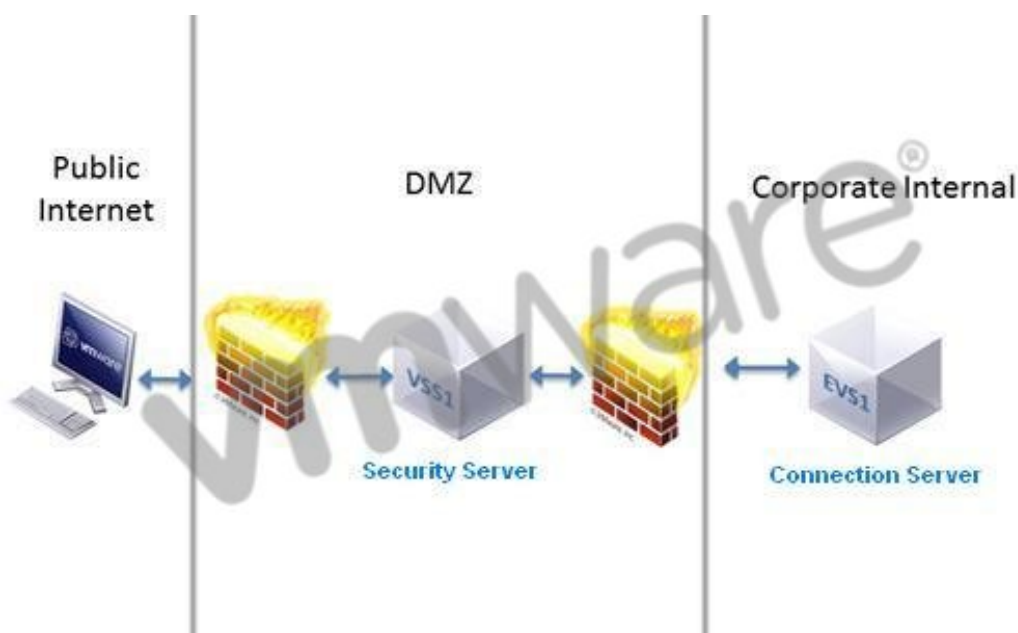
- A. the ThinApp sandbox for the corresponding ThinApp package
- B. the .EXE file for the corresponding ThinApp package
- C. the .DAT file for the corresponding ThinApp package
- D. the .MSI file containing the shortcut
- E. a shortcut to the ThinApp package on the network share

**Answer: B,C,D**

**Explanation:**

### QUESTION NO: 16

Click the Exhibit button.



A company implements a View environment to provide external users access to their desktops hosted inside the company network. As the news of this configuration spreads, more departments begin requiring their employees to connect using the View desktops. After a few months, users complain that they are experiencing intermittent connection errors when connecting to their desktops. Network tests have ruled out bandwidth issues.

Which solution would best address this problem?

- A. Increase the number of ephemeral ports available on the Security Server.
- B. Increase MaxConnectionsAllowed for the Security Server in View Administrator.
- C. Add a load balancer and a second Security Server in the DMZ; add a Replica Server in the



internal network

**D.** Install a load balancer and a Replica Server in the internal network; map the load balancer to the Security Server.

**Answer: C**

**Explanation:**

### QUESTION NO: 17

A View administrator has been tasked with maintaining a suite of applications for users in an existing View desktop pool. Part of the process is to delete unused applications from user desktops. However, the uninstallation of the ThinApp package for the web browser fails.

Which two steps should be taken to diagnose the problem? (Choose two.)

- A.** verify that network connectivity between the View Connection Server host and the desktop exists
- B.** verify that the application is running at the time of the removal attempt
- C.** verify that the corresponding View user has not disabled application removal capabilities
- D.** verify network connectivity between the View Transfer Server and the ThinApp distribution point exists

**Answer: A,B**

**Explanation:**

### QUESTION NO: 18

A View administrator has copied multiple ThinApp packages to the corresponding application repository. The goal is to stream these applications to desktops. After the application repository is scanned, no packages are available.

Which two configuration settings should the View administrator verify to diagnose the problem? (Choose two.)

- A.** that the corresponding ThinApp package.ini file has the appropriate entry for ThinAppStreaming=1
- B.** that the corresponding ThinApp package.ini file has the appropriate entry for MSIStreaming=1
- C.** that the corresponding ThinApp packages are stored in a ThinApp Distribution Server
- D.** that the corresponding ThinApp packages are in MSI format

**Answer: B,D**

**Explanation:**

**QUESTION NO: 19**

The View administrator expands the existing View environment by adding a third View Replica Server. The desktop administrator logs in to the replica and discovers that none of the pools or desktops are visible.

What is the likely cause of the problem?

- A. The Active Directory Application Mode has not been installed on the Replica Server.
- B. The Active Directory Lightweight Directory Services has not been installed.
- C. The Active Directory Application Mode instance has not completed replication.
- D. The primary domain controller has not completed replication of the Global Catalog.

**Answer: C**

**Explanation:**

**QUESTION NO: 20**

A system administrator has installed the initial instance of the Standard Connection Server. Connection to the vCenter Server fails during initial configuration.

Which three actions should the administrator perform to diagnose the failure? (Choose three.)

- A. that the ADAM Instance on the Connection Server can connect to the SQL Server database used by vCenter Server
- B. that the username of the vCenter Server user has proper permissions within vCenter Server
- C. that the system hosting vCenter Server has an active network connection
- D. that both the vCenter Server and Connection Server are in the same Active Directory domain
- E. that the FQDN of the vCenter Server can be resolved from the Connection Server

**Answer: B,C,E**

**Explanation:**

**QUESTION NO: 21**