

VMware

Exam VCP-511

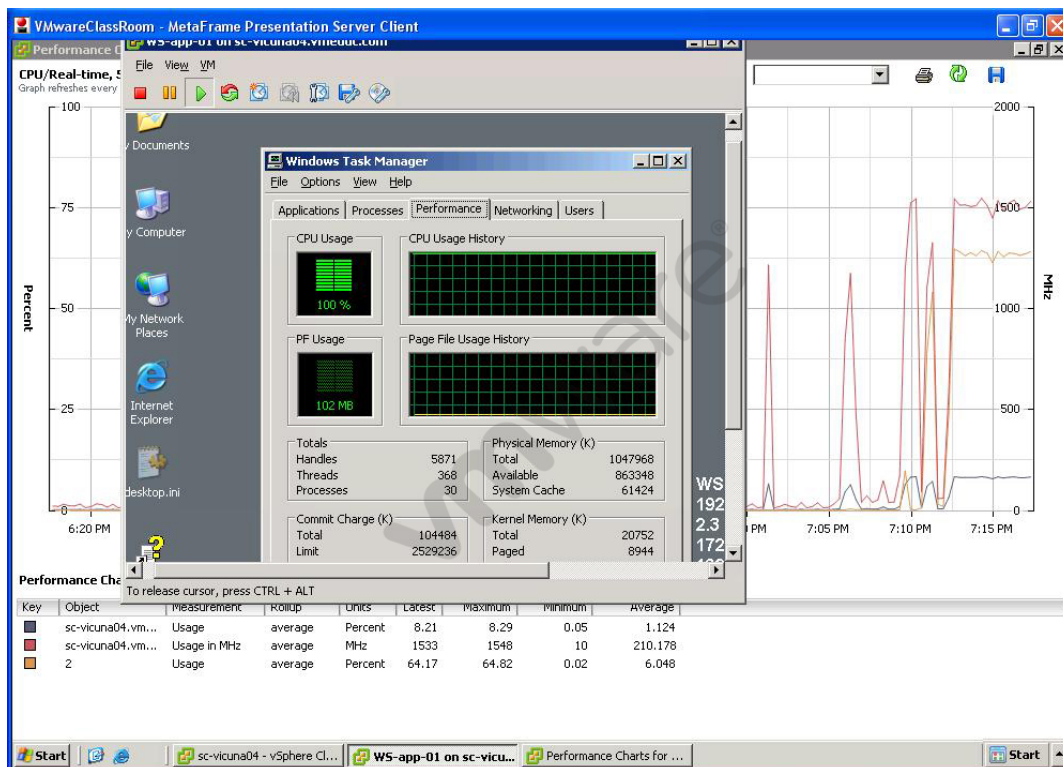
VMware Certified Professional on vSphere 5

Version: 11.3

[Total Questions: 288]

Question No : 1

Click the Exhibit button.



An administrator has deployed a new virtual machine on an ESXi 5.x host. Users are complaining of poor performance on the application running on the virtual machine. Performance tools display the results shown in the exhibit.

Which two tasks might improve the user experience? (Choose two.)

- A. Add a vCPU to the virtual machine
- B. Remove CPU affinity on the advanced CPU setting of the virtual machine
- C. Migrate the virtual machine to another ESXi host
- D. Remove the limit on the CPU settings of the virtual machine

Answer: A,D

Question No : 2

An administrator notices that when a virtual machine is placed into a resource pool, a warning indicates that the virtual machine will receive a very large percentage of the total

shares for memory.

Which action can be taken to resolve this problem?

- A. Increase the memory resource allocation to the resource pool.
- B. Increase the share value for the resource pool.
- C. Change the shares setting from custom to high, medium, or low for the virtual machine.
- D. Decrease the memory allocation for the virtual machine.

Answer: C

Question No : 3

An administrator views the Fault Tolerance pane of the Summary tab of a virtual machine and finds that the current status is Not Protected.

What are two vSphere Fault Tolerance states that would cause the virtual machine to not be protected? (Choose two.)

- A. Stopped - Fault Tolerance has been stopped on the secondary virtual machine.
- B. Need Secondary VM - The primary virtual machine is running without a secondary virtual machine and is not protected
- C. Need Primary VM - The secondary virtual machine is running, and a new primary virtual machine cannot be generated.
- D. Disabled - Fault Tolerance is disabled.

Answer: B,D

Question No : 4

Which two conditions prevent the application of a host profile to an ESXi 5.x host? (Choose two.)

- A. The host has multiple profiles attached.
- B. The host has not been placed into maintenance mode.
- C. The host is running virtual machines.
- D. The host is an ESXi host.

Answer: B,C

Question No : 5

An administrator is editing the IP allocation policy for a vApp.

Which three options are available? (Choose three.)

- A. Automatic
- B. Roaming
- C. Transient
- D. DHCP
- E. Fixed

Answer: C,D,E

Question No : 6

ACME Junkmail Incorporated has been utilizing templates in their environment. They are running a 10-node ESXi 5.x Cluster and DRS has not been configured. Several virtual machines have been deployed from this template and successfully powered on, but a newly deployed virtual machine will not power on. There appear to be adequate CPU and Memory resources available on the host.

Which three things can be done to allow more virtual machines to be deployed into the cluster from this template? (Choose three.)

- A. Select a different datastore for the virtual machine
- B. Move the swap file to a different location
- C. Deploy the virtual machine to a different host using the same datastore
- D. Enable DRS on the cluster to balance the virtual machine load out across hosts
- E. Increase the virtual machine memory reservation

Answer: A,B,E

Question No : 7

What are three valid objects to place in a vApp? (Choose three.)

- A. Folders
- B. Hosts
- C. Resource pools
- D. vApps
- E. Virtual machines

Answer: C,D,E

Question No : 8

Which three Storage I/O Control conditions might trigger the Non-VI workload detected on the datastore alarm? (Choose three.)

- A. The datastore is connected to an ESX/ESXi 4.0 host that does not support Storage I/O Control.
- B. The datastore is on an array that is performing system tasks such as replication.
- C. The datastore is utilizing active/passive multipathing or NMP (Native Multi-Pathing).
- D. The datastore is storing virtual machines with one or more snapshots.
- E. The datastore is connected to an ESX/ESXi 4.0 host that is not managed by vCenter.

Answer: A,B,E

Question No : 9

An administrator has just finished deploying a vApp for a web service.

What three options are available to the administrator for IP allocation within the vApp? (Choose three.)

- A. Transient
- B. Fixed
- C. DHCP
- D. Bridged
- E. NAT

Answer: A,B,C

Question No : 10

An administrator is working to implement Storage Profiles in their environment.

Which two ways can storage capabilities be generated? (Choose two.)

- A. They are generated by Datastore Clusters as LUNs are added to the cluster.
- B. They are automatically determined by the Storage Profile when it is created.
- C. They can be retrieved from the array through the VMware APIs for Storage Awareness (VASA).
- D. They can be manually generated by the administrator.

Answer: C,D

Question No : 11

Which VMware solution uses the security of a vSphere implementation and provides linked-clone technology to virtual desktops?

- A. VMware ACE
- B. VMware View
- C. VMware Workstation
- D. VMware ThinApp

Answer: B

Question No : 12

Which two conditions will prevent a virtual machine from being successfully migrated using Storage vMotion? (Choose two.)

- A. The virtual machine has an RDM.
- B. The virtual machine has Fault Tolerance enabled.
- C. The virtual machine is running on a vSphere 5.x Standard host.

D. The virtual machine has a disk stored on an NFS datastore.

Answer: B,C

Question No : 13

Under which two conditions can vStorage APIs for Array Integration (VAAI) provide a performance benefit? (Choose two.)

- A. When a virtual disk has VMDK files stored on an NFS datastore.
- B. When a virtual disk is created using the New Virtual Machine wizard.
- C. When cloning a virtual machine with snapshots.
- D. When a virtual disk is deleted.

Answer: A,D

Question No : 14

An administrator is enabling Enhanced vMotion Compatibility (EVC) in a DRS cluster. The administrator wants only hosts with the newest Intel processors added to the cluster.

Which setting satisfies this requirement?

- A. The baseline with the most CPUs listed
- B. The baseline with the fewest CPUs listed
- C. Any baseline that contains Future Intel processors
- D. Create a new baseline and add only the latest processor family

Answer: D

Question No : 15

Which two conditions must exist on all hosts in the cluster if Enhanced vMotion Compatibility (EVC) is used? (Choose two.)

- A. The cluster must be enabled for DRS.
- B. All hosts in the cluster must be running ESX/ESXi 3.5 Update 2 or later.

- C. All hosts in the cluster must have hardware virtualization support enabled.
- D. The cluster must be enabled for HA.

Answer: B,C

Question No : 16

Users are experiencing performance issues when updating their database hosted on a virtual machine. The administrator determines that disk I/O is high across one of the HBAs on the ESXi host containing the virtual machine.

What is the action will most likely correct the issue without significantly impacting other users or datastores?

- A. Manually configure the disk multipathing policy to Round Robin for the datastore
- B. Migrate the virtual machine to an NFS datastore using Storage vMotion
- C. Use Storage vMotion to migrate the virtual machine to a new VMFS5 datastore
- D. Map additional LUNs to the ESXi host and extend the datastores

Answer: A

Question No : 17

An administrator takes a vSphere snapshot of a virtual machine and applies an OS update. After confirming the update the administrator cannot enable Fault Tolerance on the virtual machine and suspects there are snapshots that have not been consolidated.

Which two operations can the administrator perform to verify consolidation is needed?
(Choose two.)

- A. Expose the Needs Consolidation column in the virtual machines tab of the host.
- B. Browse the datastore containing the vmdk files and look for files with the "-delta.vmdk" extension.
- C. Expose the Needs Consolidation column in the virtual machine summary tab.
- D. Select and run the vSphere Cluster HealthCheck from the right-click menu of the cluster object.

Answer: A,B

Question No : 18

An administrator has created a virtual machine that will be accessed from a public kiosk. Management has requested that the virtual machine be reset to a known state once a week or on demand if requested.

Which method is the simplest way to meet this requirement?

- A. Configure the storage array to be vSphere aware and script routine array snapshot restores of the datastore.
- B. Implement a 3rd party imaging server and PXE boot the virtual machine off a static image.
- C. Set the VMDKs of the virtual machine to be Independent-Nonpersistent and schedule restarts of the virtual machine.
- D. Create Nonpersistent disks for the virtual machine and set the guest OS to reboot once a week.

Answer: C

Question No : 19

What are three true statements about quiescing virtual machine snapshots? (Choose three.)

- A. vSphere snapshot quiescing only occurs on Windows guest OSes.
- B. The quiescing operation is automatic with any snapshot.
- C. The quiescing operation varies by guest OS.
- D. Quiescing should occur before array-based snapshots to ensure consistency.
- E. VMware Tools is required for quiescing to be successful.

Answer: C,D,E

Question No : 20

An administrator has deployed vCenter Data Recovery and wants the largest possible de-duplication store. Which three storage options can be used? (Choose three.)

- A. Two CIFS shares
- B. Two RDMs on a FCP array

- C. One NFS mount on the ESXi host and one RDMs on an iSCSI array
- D. One CIFS share and one FCP RDM
- E. Two NFS mounts on the ESXi host

Answer: B,C,E

Question No : 21

An administrator has recently upgraded their Update Manager infrastructure to vSphere 5.x. Several hosts and virtual machines have not been upgraded yet.

Which vSphere component when upgraded will have the least impact to the existing environment?

- A. Virtual Machine Hardware
- B. ESX Hosts
- C. VMFS datastores
- D. VMware Tools

Answer: D

Question No : 22

An administrator is using Update Manager 5.x to update virtual appliances in a vSphere environment. The environment is using the vCenter Server Virtual Appliance (vCSA).

What would cause the remediation to fail?

- A. Updating of the appliance can only be done if the vCenter Server Virtual Appliance (vCSA) has been put into Maintenance Mode.
- B. Remediation must be configured on the Appliance Administration page before use.
- C. Remediation of the vCenter Server Virtual Appliance (vCSA) with Update Manager is not supported.
- D. Remediation requires the hosts to be connected to vCenter using an IPv4 address.

Answer: D