

# VMware

## Exam VCP510

**VMware Certified Professional on vSphere 5**

Version: 29.0

[ Total Questions: 304 ]

**Topic break down**

<b>Topic</b>	<b>No. of Questions</b>
<b>Topic 1: Plan, Install, Configure and Upgrade vCenter Server and VMware ESXi</b>	<b>52</b>
<b>Topic 2: Plan and Configure vSphere Networking</b>	<b>40</b>
<b>Topic 3: Plan and Configure vSphere Storage</b>	<b>50</b>
<b>Topic 4: Deploy and Administer Virtual Machines and vApps</b>	<b>48</b>
<b>Topic 5: Establish and Maintain Service Levels</b>	<b>63</b>
<b>Topic 6: Perform Basic Troubleshooting and Alarm Management</b>	<b>29</b>
<b>Topic 7: Monitor a vSphere Implementation</b>	<b>22</b>

**Topic 1, Plan, Install, Configure and Upgrade vCenter Server and VMware ESXi****Question No : 1 - (Topic 1)**

Which three modules are optional components that can be added from the vCenter Server installer? (Choose three.)

- A. VMware vCenter Syslog Collector
- B. VMware vCenter License Server
- C. VMware vSphere Authentication Proxy
- D. VMware vCenter Host Update Utility
- E. VMware vSphere Auto Deploy

**Answer: A,C,E**

Reference: [http://pubs.vmware.com/vsphere-](http://pubs.vmware.com/vsphere-50/index.jsp?topic=%2Fcom.vmware.vsphere.install.doc_50%2FGUID-78933728-7F02-43AF-ABD8-0BDCE10418A6.html)

[50/index.jsp?topic=%2Fcom.vmware.vsphere.install.doc\\_50%2FGUID-78933728-7F02-43AF-ABD8-0BDCE10418A6.html](http://pubs.vmware.com/vsphere-50/index.jsp?topic=%2Fcom.vmware.vsphere.install.doc_50%2FGUID-78933728-7F02-43AF-ABD8-0BDCE10418A6.html) ( see optional components)

**Question No : 2 - (Topic 1)**

An administrator plans to use an upgrade script to upgrade a number of ESXi 5.x hosts.

What options are available for the kickstart file? (Choose two.)

- A. dryrun - Parse and check script but does not install
- B. overwritevmfs - permits overwriting of existing VMFS volumes
- C. vcenter - specifies vCenter Server
- D. autodeploy - defines autodeploy options

**Answer: A,B**

Reference:

[http://kb.vmware.com/selfservice/microsites/search.do?language=en\\_US&cmd=displayKC&externalId=2004582](http://kb.vmware.com/selfservice/microsites/search.do?language=en_US&cmd=displayKC&externalId=2004582)

**Question No : 3 - (Topic 1)**

An administrator is performing an upgrade on an ESXi host.

Which step can be used to back up the host before the upgrade is performed?

- A. Using the vSphere Client connected to vCenter, right-click the host and choose Host Backup.
- B. Log into a vMA appliance and run vicfg-cfgbackup to save the ESXi host configuration.
- C. Using the vSphere Client connected directly to the host, right-click the host and choose Host Backup.
- D. Use PowerCLI to run the host-backup cmdlet to save the ESXi host configuration.

**Answer: B**

Reference: <http://pubs.vmware.com/vsphere-50/topic/com.vmware.ICbase/PDF/vsphere-esxi-vcenter-server-50-command-line-interface-solutions-and-examples-guide.pdf> (page 22)

**Question No : 4 - (Topic 1)**

An administrator wants to monitor the health status of an ESXi 5.x host. However, when the administrator clicks the Hardware Status tab the following error is displayed.

This program cannot display the webpage

What might cause this problem?

- A. The VMware VirtualCenter Management Webservices Service is not started.
- B. The required plug-in is not enabled.
- C. The VMware ESXi Management Webservices Service is not started
- D. The name of the vCenter Server system could not be resolved.

**Answer: A**

**Explanation:**

Verify that the VMware VirtualCenter Management Webservices service is running on the vCenter Server system. Navigate to the vCenter Server system in the inventory and select Monitor > Service Health. The page displays the following message if the VMware VirtualCenter Management Webservices service is not started.

**Could not get vCenter Health status**

If you see this error message, start the VMware VirtualCenter Management Webservices service.

**Question No : 5 - (Topic 1)**

What is a benefit of vCenter Linked-Mode?

- A. Allows the vCenter Server Virtual Appliance (vCSA) to manage multiple sites
- B. Pools vRAM entitlement
- C. Increases vCenter security
- D. Increases vCenter reliability

**Answer: B**

Reference: [http://pubs.vmware.com/vsphere-50/index.jsp?topic=%2Fcom.vmware.vsphere.vcenterhost.doc\\_50%2FGUID-EC40636E-0DD4-4A17-B163-5CFBDC31666C.html](http://pubs.vmware.com/vsphere-50/index.jsp?topic=%2Fcom.vmware.vsphere.vcenterhost.doc_50%2FGUID-EC40636E-0DD4-4A17-B163-5CFBDC31666C.html)

**Question No : 6 - (Topic 1)**

Which two settings are required by the deployment wizard when installing the VMware vCenter Server Virtual Appliance (vCSA)? (Choose two.)

- A. Number of CPUs
- B. Datastore to install on
- C. Linked-mode
- D. Name of the vCenter server

**Answer: B,D**

Reference: <http://pubs.vmware.com/vsphere-51/index.jsp?topic=%2Fcom.vmware.vsphere.install.doc%2FGUID-25FCBA87-5D2F-4CB6-85D7-88899B4AC174.html>

**Question No : 7 - (Topic 1)**

What two Advanced IP Allocation Schemes are available? (Choose two.)

- A. Fixed
- B. DHCP
- C. OVF Environment
- D. Transient

**Answer: B,C**

Reference: <http://www.vmwarehub.com/Edit-vApp-settings.html>

**Question No : 8 - (Topic 1)**

If you create a custom role and do not assign privileges what system-defined privileges are added? (Choose two.)

- A. System.Anonymous
- B. System.Read
- C. System.Write
- D. System.Administrator

**Answer: A,B**

Reference: <http://pubs.vmware.com/vsphere-51/index.jsp?topic=%2Fcom.vmware.vsphere.security.doc%2FGUID-93B962A7-93FA-4E96-B68F-AE66D3D6C663.html>

**Question No : 9 - (Topic 1)**

An administrator plans to deploy ESXi 5.x, but does not want to use CD or DVD media.

What are two alternate ways to provide the ESXi 5.x installation script to the host? (Choose two.)

- A. PXE
- B. FTP
- C. HTTP
- D. IPMI

**Answer: B,C**

**Explanation:**

ESXi 5.x allows you to use FTP and HTTP to provide installations script to the host if you don't want to use DVD or other media.

**Question No : 10 - (Topic 1)**

A series of Auto Deploy ESXi 5.x hosts, which utilize vSphere Standard Switches, are unable to boot. In prior testing, all of the hosts were able to boot successfully.

Which two conditions might cause this issue? (Choose two.)

- A. The Hosts are unable to connect to the SAN.
- B. The TFTP server is down.
- C. The DNS server is down.
- D. The DHCP server is down.

**Answer: B,D**

**Explanation:**

If the TFTP server is down, ESXi will not boot because it needs TFTP to get the information. Similarly, when DHCP is down, it will not assign the IP addresses and ESXi needs IP address to boot properly.

**Question No : 11 - (Topic 1)**

The Typical option is selected while running the New Virtual Machine Wizard in the vSphere Client. Which three specific configuration options are included during virtual machine creation? (Choose three.)

- A. Datastore location

- B. Virtual machine version
- C. Number of vCPUs
- D. Storage DRS
- E. Virtual disk size

**Answer: A,C,E**

Reference: <http://pubs.vmware.com/vsphere-50/topic/com.vmware.ICbase/PDF/vsphere-esxi-vcenter-server-50-virtual-machine-admin-guide.pdf>

**Question No : 12 - (Topic 1)**

The VMware vCenter Server Appliance has been deployed using default settings.

What user name and password are used to log in to the administration interface to configure the appliance?

- A. The initial user name and password must be supplied on the first login attempt.
- B. The initial user name and password must be supplied during deployment.
- C. The initial user name is root and the password is blank.
- D. The initial user name is root and the password is vmware.

**Answer: D**

**Explanation:**

Default user name and password is root and vmware respectively. This is a norm with VMware since they are easy to remember. However, it is advised to change username and password once you are done with installing the vcenter server.

**Question No : 13 - (Topic 1)**

What are three reasons for deploying vCenter Server in a physical machine? (Choose three.)

- A. vCenter Server can be deployed as physical machine to support a VSA configuration.
- B. vCenter Server can be deployed as a physical machine to ensure it is not susceptible to



vSphere outages.

**C.** vCenter Server can be deployed as a physical machine to improve VMware Data Recovery performance.

**D.** vCenter Server can be deployed as a physical machine to improve vMotion performance.

**E.** vCenter Server can be deployed as a physical machine to ensure it does not contend for resources.

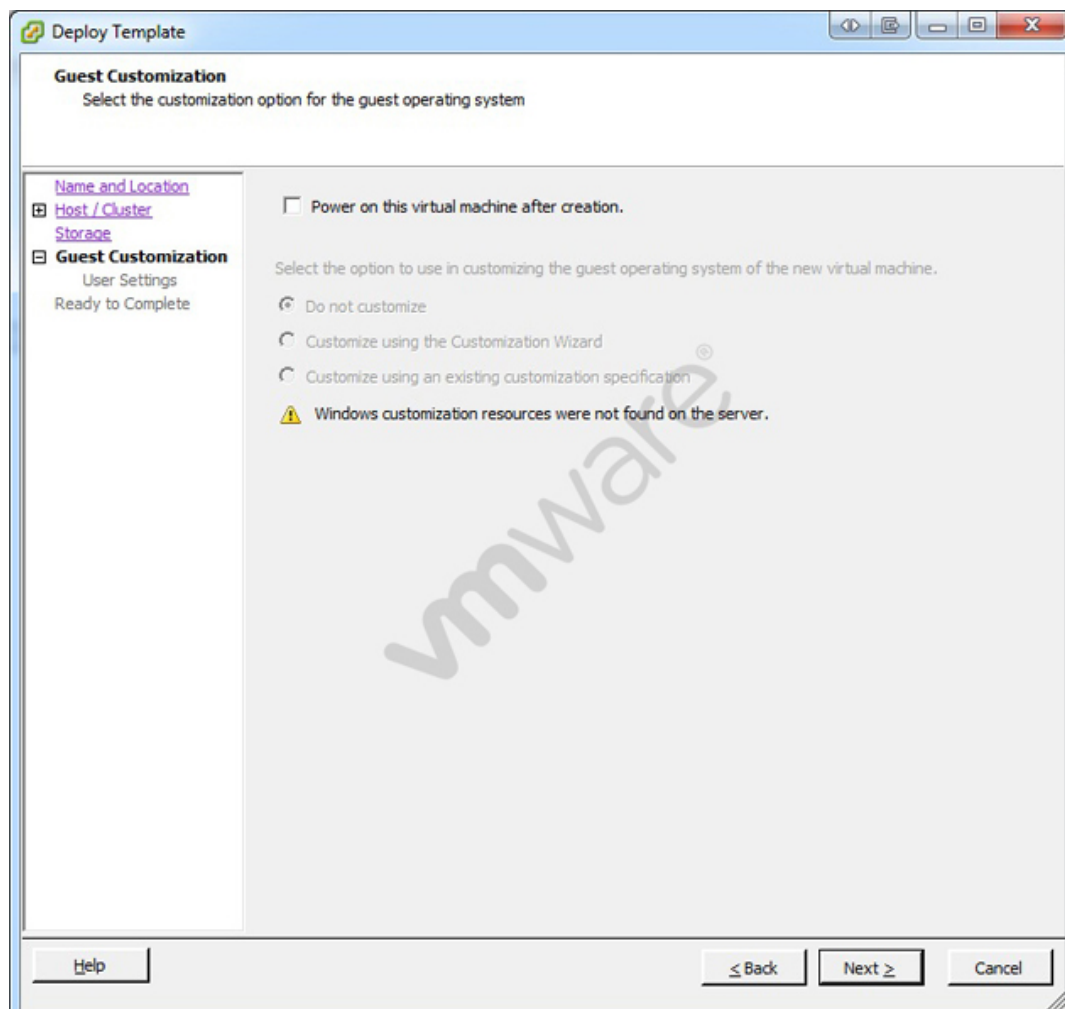
**Answer: A,B,E**

**Explanation:**

VCenter server can be deployed as a physical machine so that VSA configuration can be supported and ensures it is not susceptible to vSphere outages. It can also be deployed as physical machine to make sure it does not contend for virtual resources.

**Question No : 14 - (Topic 1)**

Click the Exhibit button.



## VMware VCP510 : Practice Test

An administrator has implemented a new vSphere 5 environment and is deploying their first Windows 2008 R2 template. When running the Deploy Template wizard, the error shown in the exhibit appears.

What can be done to correct the problem?

- A. Select the correct guest OS setting for the virtual machine.
- B. Windows 2003 x64 cannot be customized.
- C. Download and install the Microsoft Sysprep tool into the virtual machine to be customized.
- D. Download the Microsoft Sysprep tool to the appropriate vCenter Server directory.

**Answer: D**

**Explanation:** <http://communities.vmware.com/thread/45830>

See the table at:

[http://kb.vmware.com/selfservice/microsites/search.do?language=en\\_US&cmd=displayKC&externalId=1005593](http://kb.vmware.com/selfservice/microsites/search.do?language=en_US&cmd=displayKC&externalId=1005593)

### Question No : 15 - (Topic 1)

What virtual machine action listed below can be performed on a template?

- A. Power on
- B. Clone
- C. Edit Settings
- D. Migrate

**Answer: B**

Reference: <http://robertparten.com/vmware-difference-between-clone-and-template/>

### Question No : 16 - (Topic 1)