

VMware

Exam VCPC510

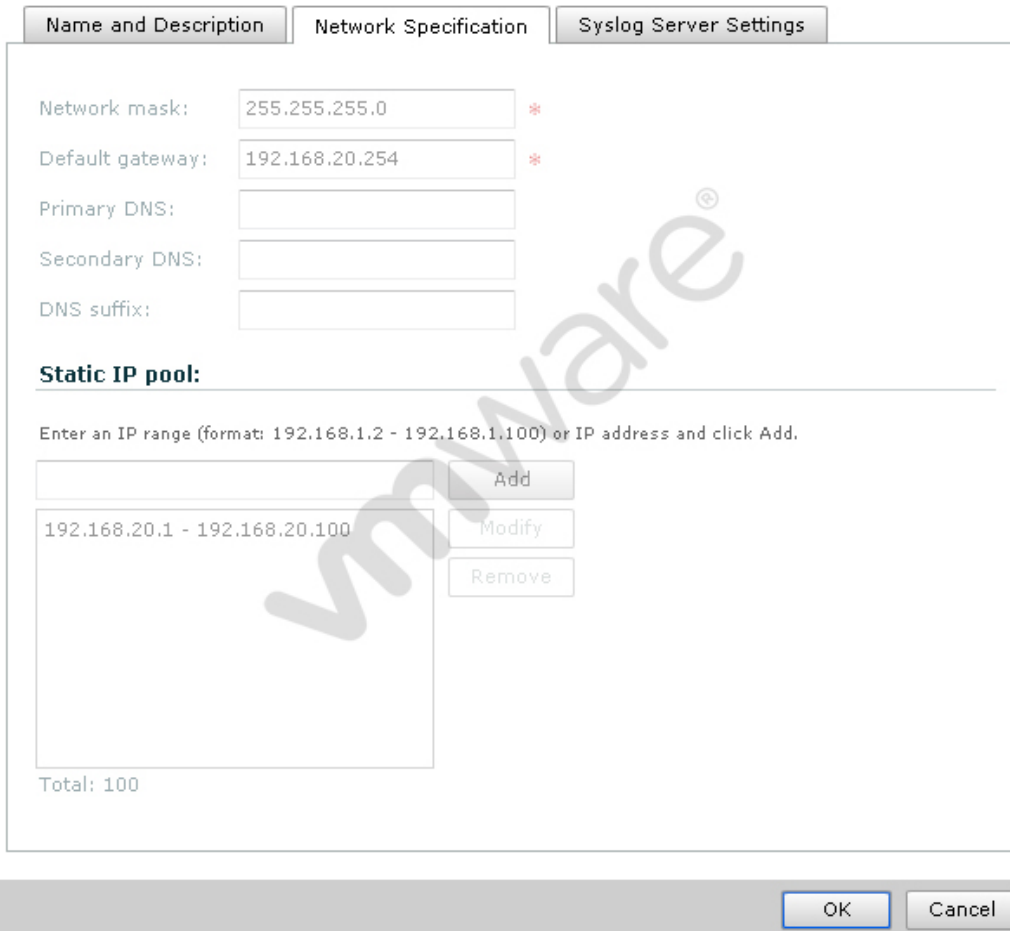
VMware Certified Professional on vCloud

Version: 6.0

[Total Questions: 250]

Question No : 1

-- Exhibit --



The screenshot shows the 'Network Specification' tab in VMware VCPC510. It contains the following fields:

- Network mask: 255.255.255.0 *
- Default gateway: 192.168.20.254 *
- Primary DNS: (empty)
- Secondary DNS: (empty)
- DNS suffix: (empty)

Static IP pool:

Enter an IP range (format: 192.168.1.2 - 192.168.1.100) or IP address and click Add.

IP Range	Buttons
192.168.20.1 - 192.168.20.100	Add, Modify, Remove

Total: 100

At the bottom right, there are 'OK' and 'Cancel' buttons.

-- Exhibit --

Click the Exhibit button.

An administrator needs to modify the range of static IP addresses available to the network in question. The administrator clicks on the Network Specification tab and is presented the options shown in the exhibit, which cannot be selected.

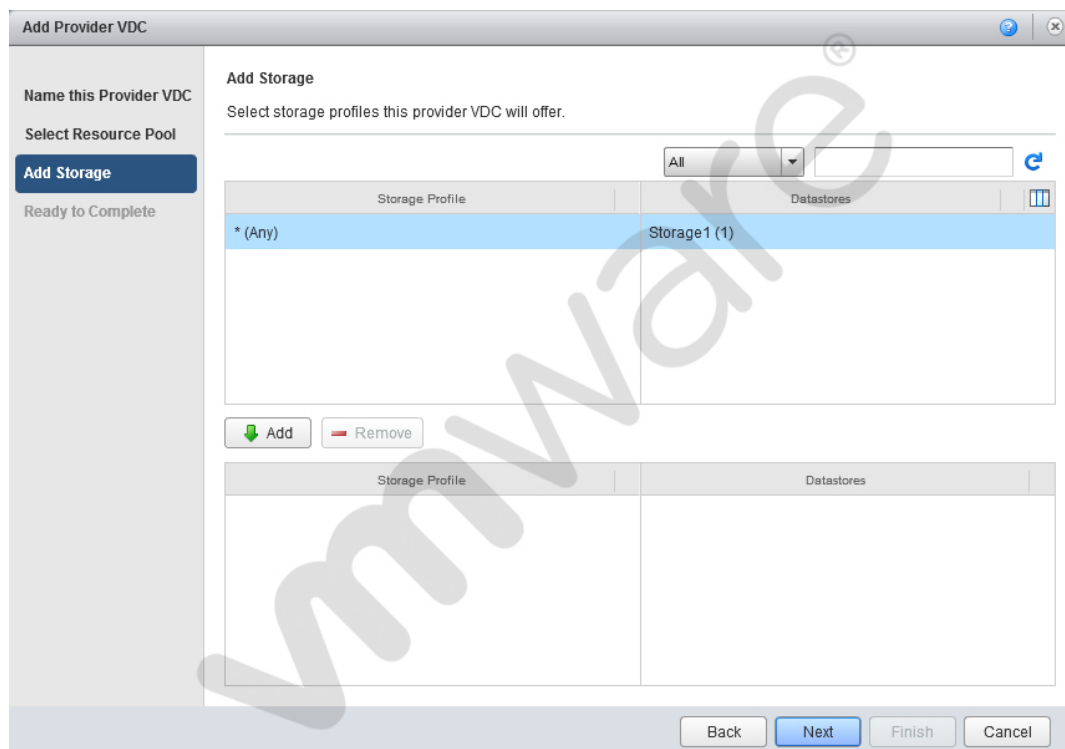
What is a possible cause for this issue?

- A. The administrator does not have the vShield Manager role.
- B. The administrator does not have the organization administrator role.
- C. The vShield Edge appliance has been powered off and is inaccessible.
- D. The network in question is a direct connected external organization network.

Answer: D

Question No : 2

-- Exhibit --



-- Exhibit --

Click the Exhibit button.

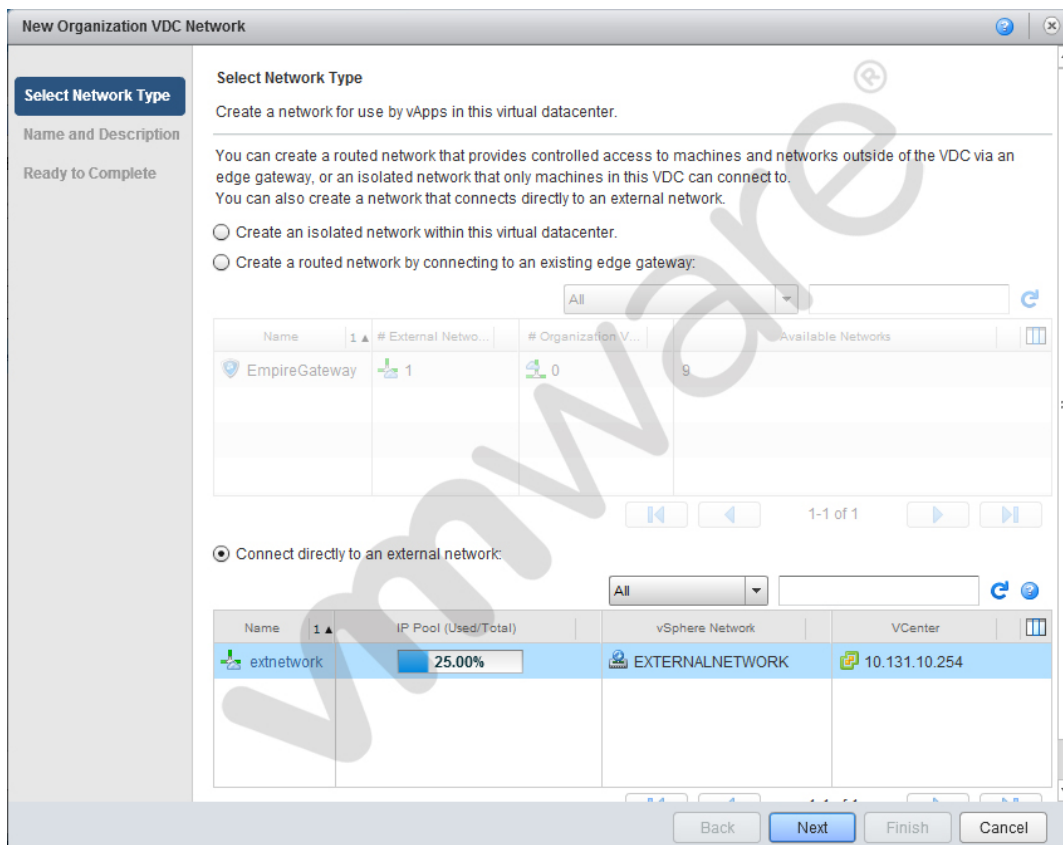
When adding storage in the Provider vDC wizard you don't see the intended Storage Profile. What could be the cause?

- A. The Storage Profile has not been created in vCenter.
- B. The Storage Profile has been named with more than 5 characters.
- C. The Storage Profile is set by the Org vDC wizard
- D. The Provider vDC combines all storage profiles into *(Any)

Answer: A

Question No : 3

-- Exhibit --



-- Exhibit --

Click the Exhibit button.

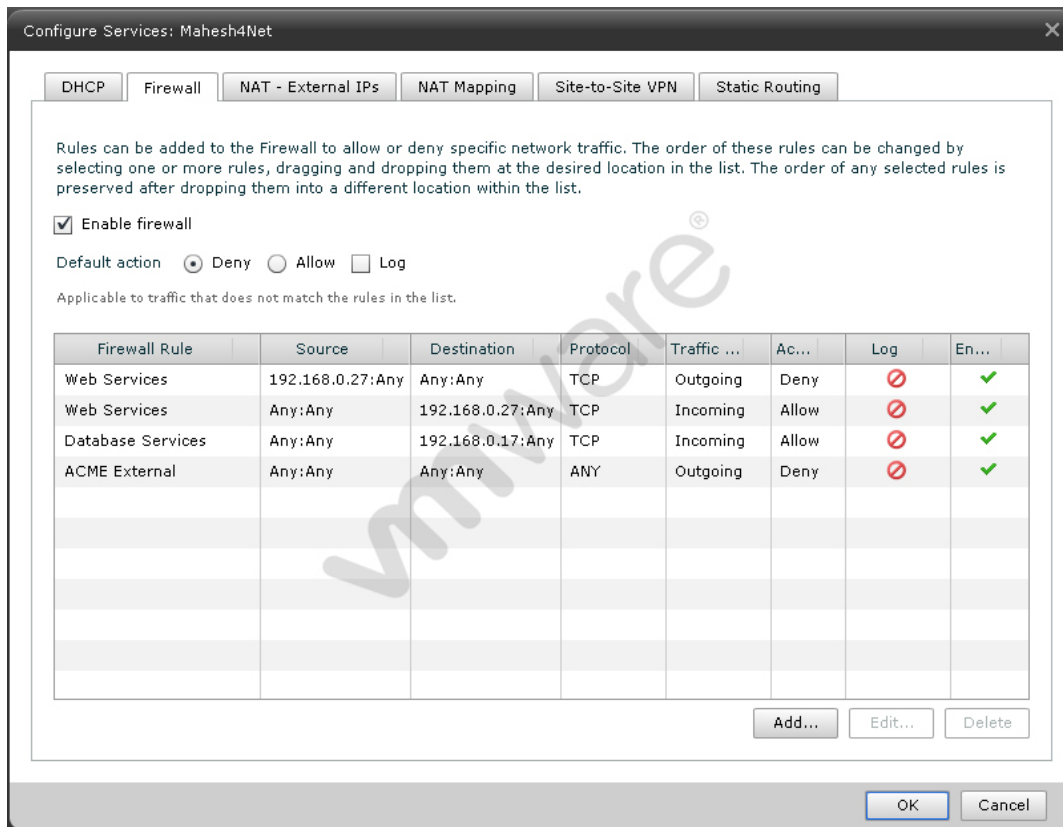
Which External Organization Network type is being created in the Organization Network Creation Wizard?

- A. External port group-backed
- B. External VLAN-backed
- C. External Direct
- D. External Routed

Answer: C

Question No : 4

-- Exhibit --



-- Exhibit --

Click the Exhibit button.

ACME has a virtual machine with an IP address of 192.168.0.51. It is running an SMTP mail service and is unable to communicate from the assigned network. The network is an External Routed network with the firewall rules displayed in the exhibit.

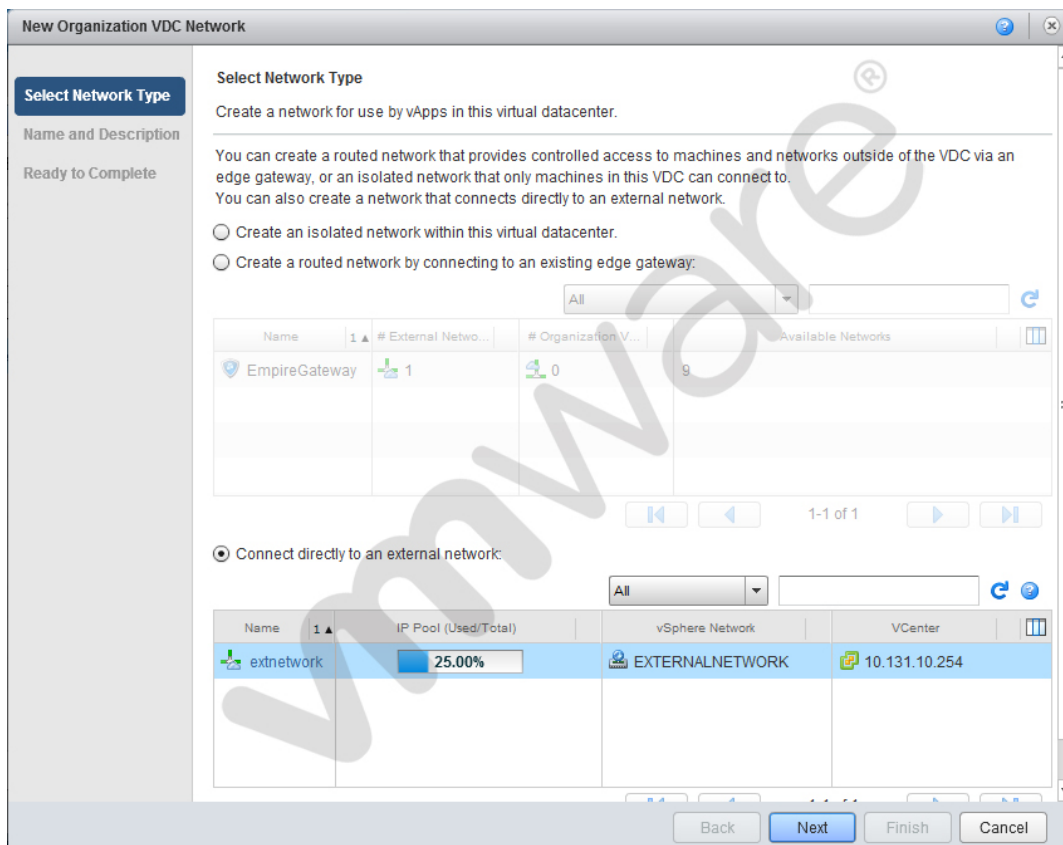
Which configuration change would correct this behavior?

- A. Set the Destination IP address to 192.168.0.51.
- B. Disable the Web Services rule for the Incoming Traffic Type.
- C. Change the ACME External rule Traffic Type to Incoming.
- D. Set the ACME External rule to Allow.

Answer: D

Question No : 5

-- Exhibit --



-- Exhibit --

Click the Exhibit button.

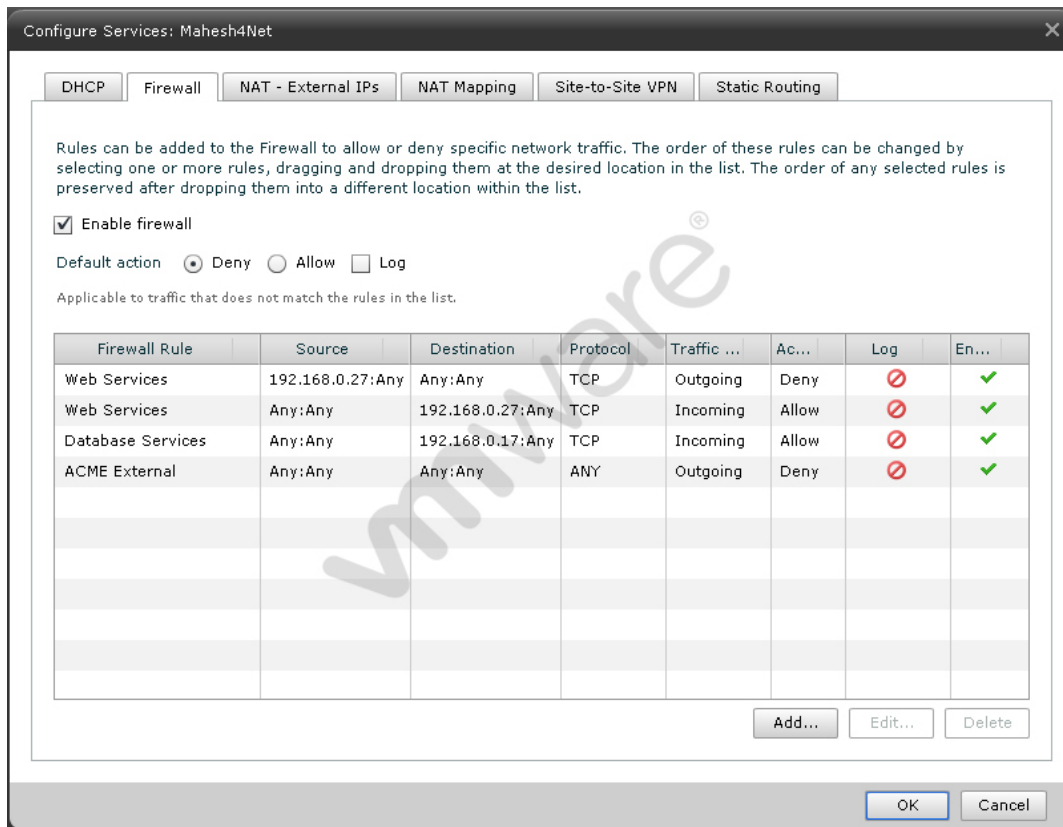
Which External Organization Network type is being created in the Organization Network Creation Wizard?

- A. External port group-backed
- B. External VLAN-backed
- C. External Direct
- D. External Routed

Answer: D

Question No : 6

-- Exhibit --



-- Exhibit --

Click the Exhibit button.

ACME has a Web Server virtual machine with an IP Address of 192.168.0.27. It is not responding to incoming customer requests on either internal or external networks. The network is an External Routed network with the firewall rules displayed in the exhibit.

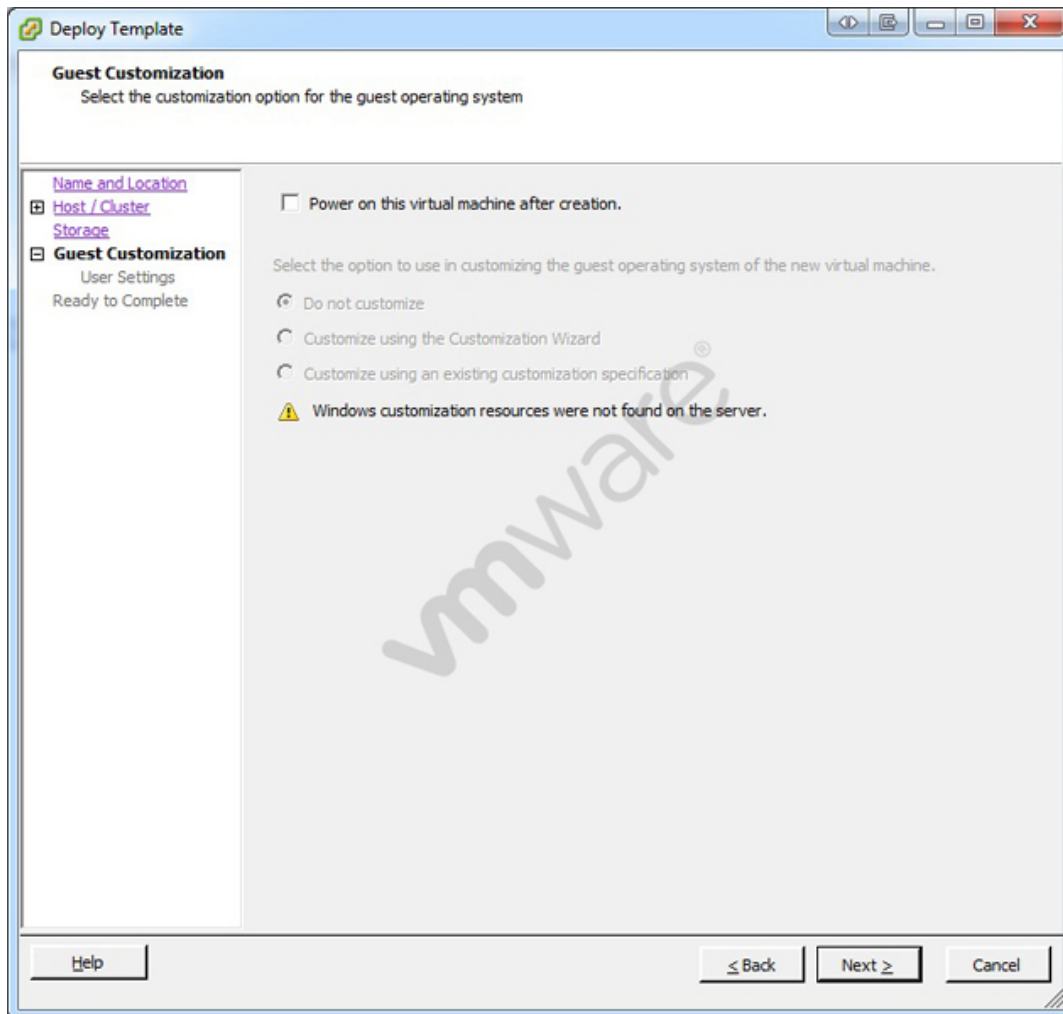
Which configuration change would correct this behavior?

- A. Change the Outgoing Web Services rule to Allow.
- B. Change the IP Address of the Incoming Web Services rule to 192.168.0.17
- C. Change the IP Address of the Web Services Source to 192.168.0.17
- D. Delete the Outgoing Web Services rule.

Answer: A

Question No : 7

-- Exhibit --



-- Exhibit --

Click the Exhibit button.

An administrator has implemented a new vSphere 5 environment and is deploying their first Windows 2008 R2 template. When running the Deploy Template wizard, the error shown in the exhibit appears.

What can be done to correct the problem?

- A. Select the correct guest OS setting for the virtual machine.
- B. Windows 2003 x64 cannot be customized.
- C. Download and install the Microsoft Sysprep tool into the virtual machine to be customized.
- D. Download the Microsoft Sysprep tool to the appropriate vCenter Server directory.

Answer: A

Question No : 8

Your Cloud Administrator has asked you to deploy an Edge Gateway that will serve as a primary gateway for multiple Org vDC Networks. It has been decided that the size of the Edge Gateway will be Full.

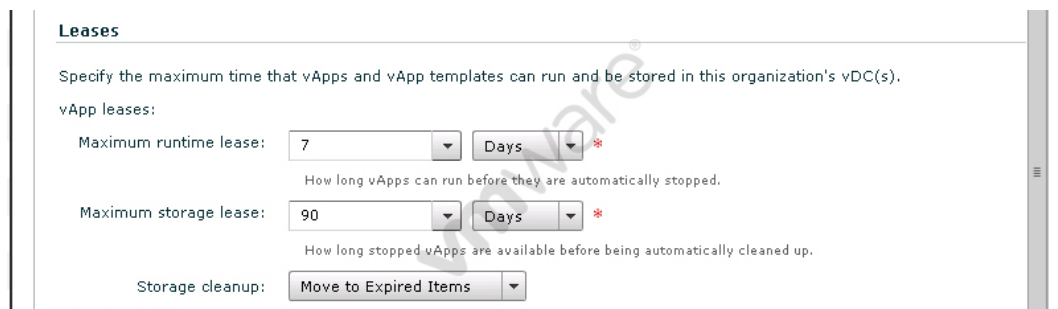
When the Edge Gateway is deployed, what is the correct number cpus, memory, and cpu shares that will be automatically allocated?

- A. 1 cpu(s) with 1000 Shares and 256MB of memory.
- B. 2 cpu(s) with 1000 Shares and 512MB of memory.
- C. 2 cpu(s) with 2000 Shares and 1024MB of memory.
- D. 1 cpu(s) with 2000 Shares and 256MB of memory.

Answer: C

Question No : 9

-- Exhibit --



Leases

Specify the maximum time that vApps and vApp templates can run and be stored in this organization's vDC(s).

vApp leases:

Maximum runtime lease: *

How long vApps can run before they are automatically stopped.

Maximum storage lease: *

How long stopped vApps are available before being automatically cleaned up.

Storage cleanup:

-- Exhibit --

Click the Exhibit button.

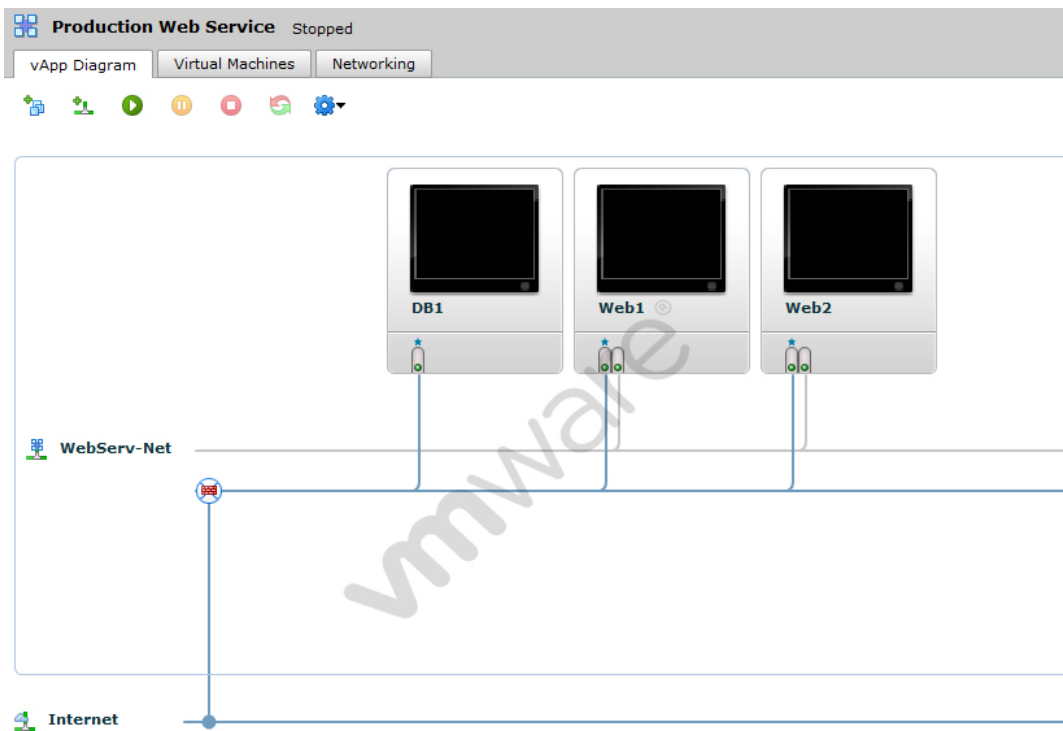
How long will VMs deployed in an organization with the indicated settings reside on storage?

- A. Until powered off
- B. Indefinitely
- C. Three months
- D. One week

Answer: B

Question No : 10

-- Exhibit --



-- Exhibit --

Click the Exhibit button.

A business requires the DB1 server to remain isolated from the Internet. Web1 and Web2 are multi-homed and not configured to forward packets.

Based on the exhibit, what must be done to meet the business requirement?

- A. Deploy an additional vShield Edge device between DB1 and Web VMs.
- B. Connect DB1 to a new isolated network.
- C. Modify the DB1 NIC to connect to WebServ-Net.
- D. Deploy an additional vShield Edge device between DB1 and the Internet.